



PROPOSED POLE LOCATION

LIGHTING RELOCATE DETAIL

RUBECK TR 1/2 BETTY RUBECK

- NOTE:
1. RELOCATE EXISTING 40' POLE AND LUMINAIRE ON PROPOSED FOUNDATION.
 2. EXISTING BREAKAWAY COUPLING, SS SCREEN SHALL BE REUSED AND BE INCLUDED IN THE POLE RELOCATION COST.
 3. RELOCATE EXISTING CONTROLLER
 4. RELOCATE EXISTING ELECTRICAL SERVICE.
 5. INSTALLATION OF 1 1/2" DIA., NON-METALLIC CONDUIT FOR THE RELOCATION OF THE SERVICE INSTALLATION TO THE CONTROLLER
 6. PROPOSED LOCATION SHALL BE APPROVED BY SCOTT KULLERSTRAND WITH IDOT. (815-284-5468)

EXISTING POLE LOCATION

SECTION BEGINS STA 227+00

EXISTING R.O.W.

PROPOSED R.O.W.

8' HOT-MIX ASPHALT SHOULDER

2 CENTERED CURVE
100'R - 400'R
8' OFFSET

STA 236+35.54 (IL RTE 76)
STA 514+97.01 (W. ORTH RD)
SEE LIGHTING DETAIL

CULVERT REMOVAL

STA 235+19.90
27.00' LT

CULVERT REMOVAL

STA 237+48.33
27.00' LT

2 CENTERED CURVE
100'R - 400'R
8' OFFSET

EXISTING R.O.W.

MATCH LINE STA 239+00

CONSTRUCTION LIMITS

EXISTING R.O.W.

STA 237+48.95
27.00' RT

STA 236+40.38 (IL RTE 76)
STA 515+97.01 (E. ORTH RD)

2 CENTERED CURVE
100'R - 400'R
8' OFFSET

IMPROVEMENT BEGINS
STA 224+73.92

SHOULDER REMOVAL

STA 235+80.12
27.00' RT

2 CENTERED CURVE
50'R - 250'R
12' OFFSET

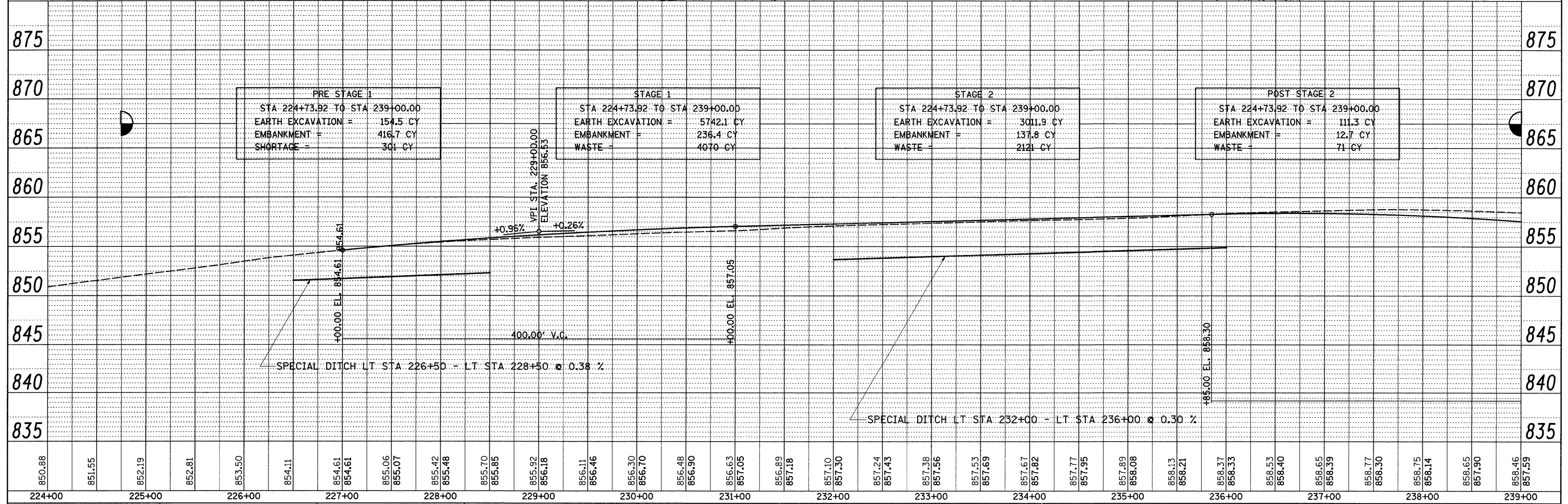
- = TREE REMOVAL (ACRE)
- = TREE REMOVAL (EACH)
- = PAVEMENT REMOVAL

STA 229+48.39
37.94' RT
50' P CULV, CLASS D, TYPE 1, 15"
2 EACH 15" END SECTIONS

BEL-AIR ESTATES LTD

BEL-AIR ESTATES LTD

BEL-AIR ESTATES LTD



DATE	
BY	
REVISED	
PLANNED	
NOTED	
CHECKED	
STRUCTURE	
NOTATING	
CHKD	

DATE	
BY	
REVISED	
PLANNED	
NOTED	
CHECKED	
STRUCTURE	
NOTATING	
CHKD	