

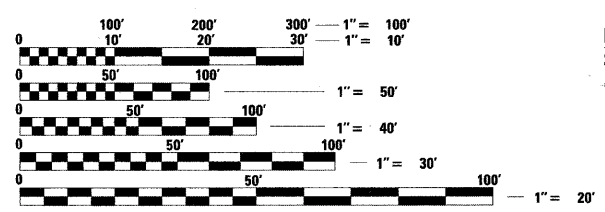
INDEX OF SHEETS

1	COVER SHEET
2	GENERAL NOTES
3-3A	SUMMARY OF QUANTITIES
10-17	TYPICAL SECTIONS
18-31	SCHEDULES OF QUANTITIES
32-36	ALIGNMENTS, TIES AND BENCHMARKS
37-61	PLAN AND PROFILE SHEETS
62-109	STAGING PLANS
110-123	PAVEMENT MARKING, EROSION AND SEDIMENT CONTROL PLANS AND DETAILS
124-126	DRAINAGE AND UTILITY PLANS
127-129	RIGHT OF WAY
130-132	INTERSECTION DETAILS
133-134	TRANSITION APPROACH CHANNELIZED DETAIL
135-137	SUPERELEVATION DETAILS
138-141	GRADING PLAN
142-146	TRAFFIC SIGNAL PLANS
147-148	SIGNAL FOUNDATION SOIL BORINGS
149-154	SIGNING PLANS
155-164	DISTRICT CADD DETAILS
165-166	SPECIAL DETAILS
167	LIGHTING GENERAL NOTES AND LEGEND
168-172	ROADWAY LIGHTING PLAN
173	ROADWAY TEMPORARY LIGHTING PLAN
174	UNDERPASS LIGHTING PLAN
175	WIRING DIAGRAM
176	HIGHMAST AIMING DIAGRAM
177-181	ROADWAY LIGHTING DETAIL
182	CONCRETE FOUNDATION DETAIL
183-189	ROADWAY LIGHTING SOIL BORINGS
190-282	CROSS SECTIONS
283-313	STRUCTURE PLANS - BRISBIN RD
314-332	STRUCTURE PLANS - RAMP B
333-351	STRUCTURE PLANS - RAMP C
351A-351K	EXISTING BRISBIN ROAD BRIDGE PLANS

FOR LIST OF HIGHWAY STANDARDS, SEE SHEET NO. 2

FUNCTIONAL CLASSIFICATION

BRISBIN RD: URBAN MAJOR COLLECTOR	
2010 ADT=	2,200
2020 ADT=	13,200
2030 ADT=	16,500
I-80: RURAL INTERSTATE	
2010 ADT=	34,100
2020 ADT=	47,960
2030 ADT=	60,560
NORTH RD: LOCAL RD	
2010 ADT=	400
2020 ADT=	400
2030 ADT=	500
US 6: URBAN MAJOR COLLECTOR	
2010 ADT=	7,900
2020 ADT=	15,600



FULL SIZE PLANS HAVE BEEN PREPARED USING STANDARD ENGINEERING SCALES. REDUCED SIZED PLANS WILL NOT CONFORM TO STANDARD SCALES. IN MAKING MEASUREMENTS ON REDUCED PLANS, THE ABOVE SCALES MAY BE USED.

J.U.L.I.E.
JOINT UTILITY LOCATION INFORMATION FOR EXCAVATION
1-800-892-0123
OR 811

REVISED 9-1-10
PROJECT ENGINEER: CRAIG REED, P.E.
SQUAD LEADER: MARK JONES, P.E.

CONTRACT NO. 66408

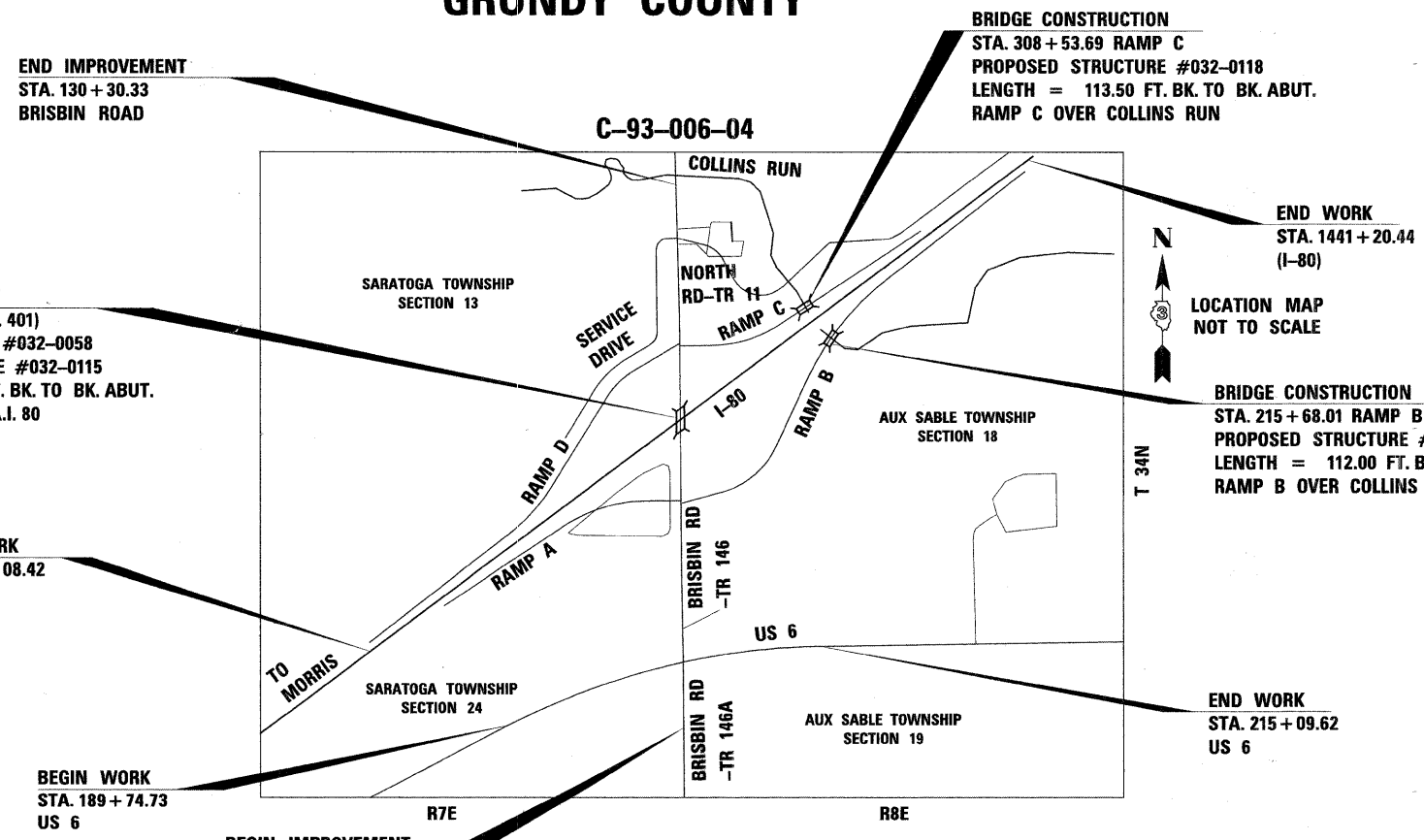


Andrew K. Kassey
5/19/10
SHEETS 1-166, 183-282
EXP. 11/30/11

STATE OF ILLINOIS
DEPARTMENT OF TRANSPORTATION
DIVISION OF HIGHWAYS

**PROPOSED
HIGHWAY PLANS**

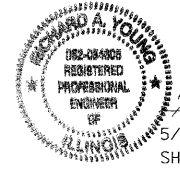
**FAI 80 (I-80)
FAS 297 / FAU 392 (US 6)
SECTION (32,47-4)HBK-4 & (G/N)
PROJECT ACIM-HPP-080-4(189)115
BRISBIN RD. INTERCHANGE CONSTRUCTION
US 6 INTERSECTION RECONSTRUCTION
GRUNDY COUNTY**



GROSS LENGTH = 18,693.39 FT. = 3.540 MILE
NET LENGTH = 14,714.67 FT. = 2.787 MILE



5/3/10
SHEETS 283-351
EXP. 11/30/11

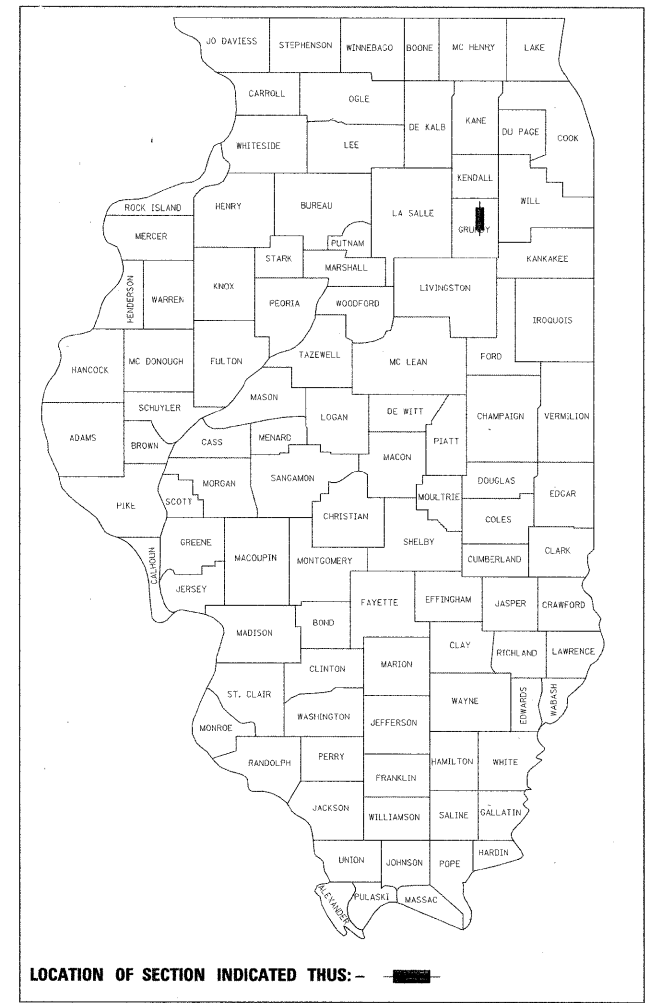


5/3/10
SHEETS 167-182
EXP. 11/30/11

LOCHNER

H.W. LOCHNER, INC.
CONSULTING ENGINEERS & PLANNERS
20 NORTH WACKER DRIVE SUITE 1200
CHICAGO, IL 60606

F.A.U. RTE.	SECTION	COUNTY	TOTAL SHEETS	SHEET NO.
*	(32,47-4) HBK-4 & (G/N)	GRUNDY	351	1
ILLINOIS			CONTRACT NO. 66408	
* FAI 80 & FAS 297 / FAU 392			351 + 13 = 364	
D-93-011-04				



STATE OF ILLINOIS
DEPARTMENT OF TRANSPORTATION
DIVISION OF HIGHWAYS

SUBMITTED July 9 2010
George Ryan
DEPUTY DIRECTOR OF HIGHWAYS, REGION ENGINEER

August 13 2010
Scott E. Stitt, P.E.
ENGINEER OF DESIGN AND ENVIRONMENT

August 13 2010
Christine M. Reed
DIRECTOR OF HIGHWAYS, CHIEF ENGINEER

**PRINTED BY THE AUTHORITY
OF THE STATE OF ILLINOIS**