

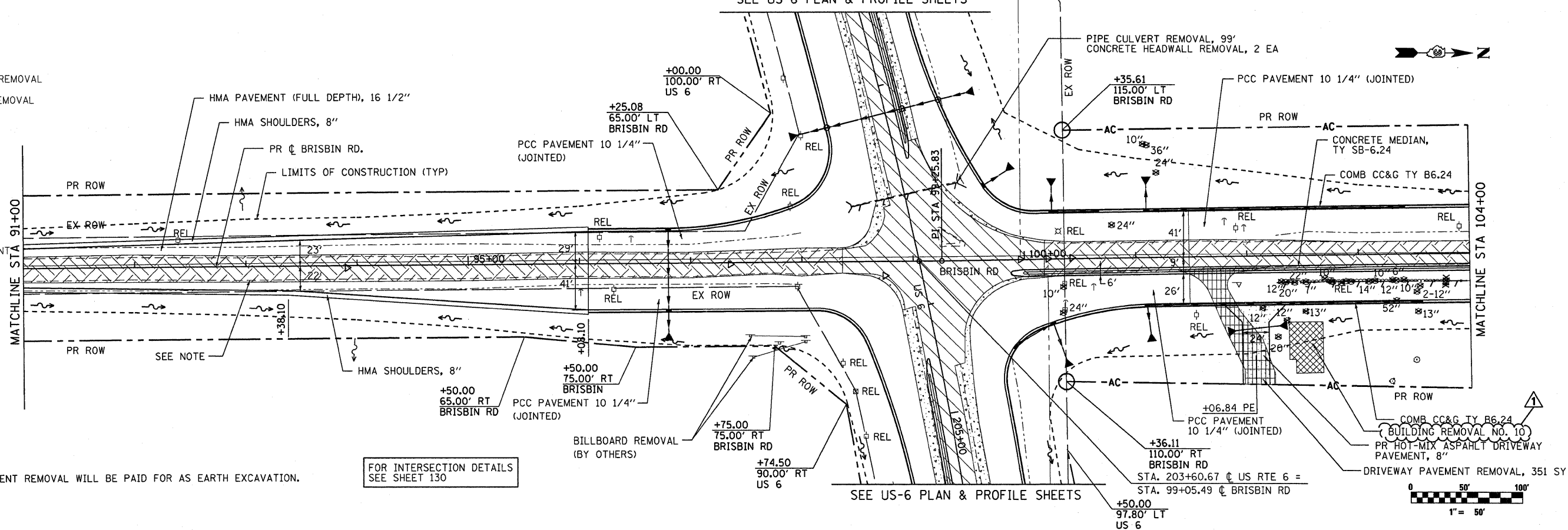
LEGEND

- PAVEMENT REMOVAL
- EARTH EXCAVATION
- STABILIZED SHOULDER REMOVAL
- DRIVEWAY PAVEMENT REMOVAL
- REMOVAL ITEM
- SIGN REMOVAL
- TREE REMOVAL
- STORM SEWER REMOVAL
- INLET REMOVAL
- MANHOLE REMOVAL
- EXISTING CONTROL POINT

DATE	
BY	
REVIEWED	
ALIGNED	
CHECKED	
NO.	
NOTE BOOK	
NO.	
ADD FILE NAME	

DATE	
BY	
REVIEWED	
GRADES CHECKED	
NO.	
NOTE BOOK	
NO.	
STRUCTURE NOTATIONS CHRD	

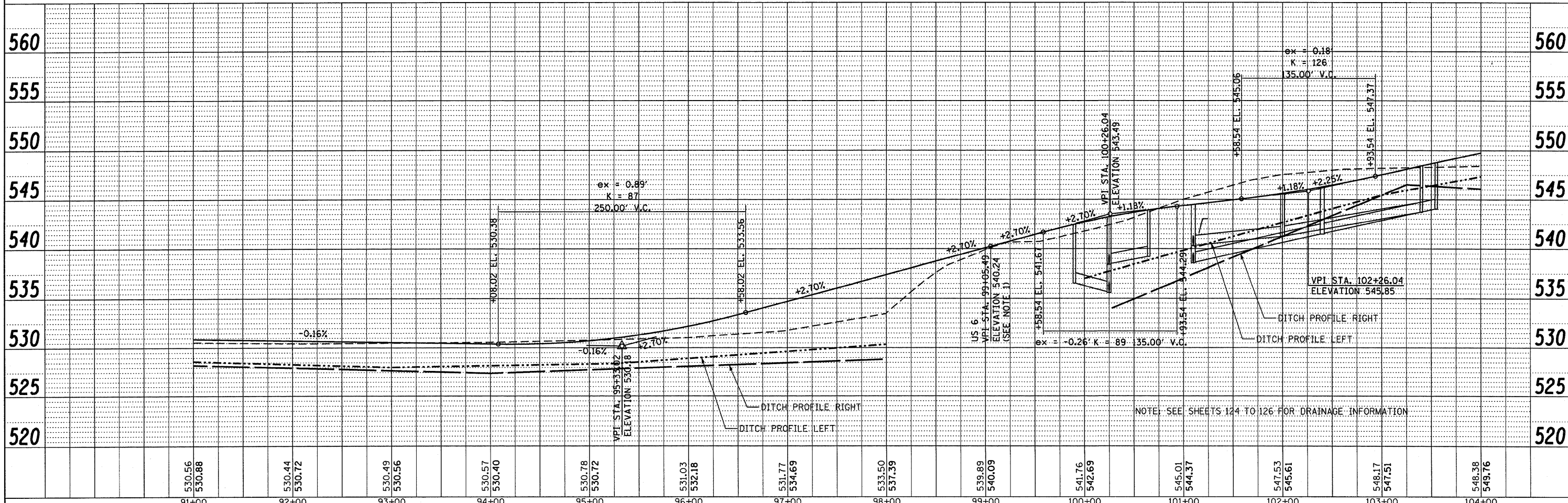
SEE US-6 PLAN & PROFILE SHEETS



NOTE: BRISBIN ROAD PAVEMENT REMOVAL WILL BE PAID FOR AS EARTH EXCAVATION.

FOR INTERSECTION DETAILS SEE SHEET 130

SEE US-6 PLAN & PROFILE SHEETS



FILE NAME =	USER NAME = schwankerg	DESIGNED - CGC	REVISED - IDOT 8-27-10
alpha_work\pwsd\schwankerg\dms82781\036408-ht-plnprf-Brisbn.dgn		DRAWN - CGC	REVISED -
PLOT SCALE = 50.0000' / IN.		CHECKED - JPW	REVISED -
PLOT DATE = Aug 27, 2010 - 11:48:27 AM		DATE Aug 27, 2010 - 11:48:27 AM	REVISED -

STATE OF ILLINOIS  
DEPARTMENT OF TRANSPORTATION

BRISBIN ROAD  
PLAN & PROFILE

F.A.U. RTE.	SECTION	COUNTY	TOTAL SHEETS	SHEET NO.
	(32,47-4) HBK-4 & G(N)	GRUNDY	351	38
CONTRACT NO. 66408				

SCALE: 1"=50' SHEET NO. 38 OF 351 SHEETS STA. 91+00 TO STA. 104+00

ADDENDUM REVISED 9-01-10 MJ  
SHEET

FAT 80 & FAS 297 / FAU 392