



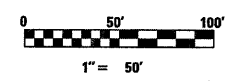
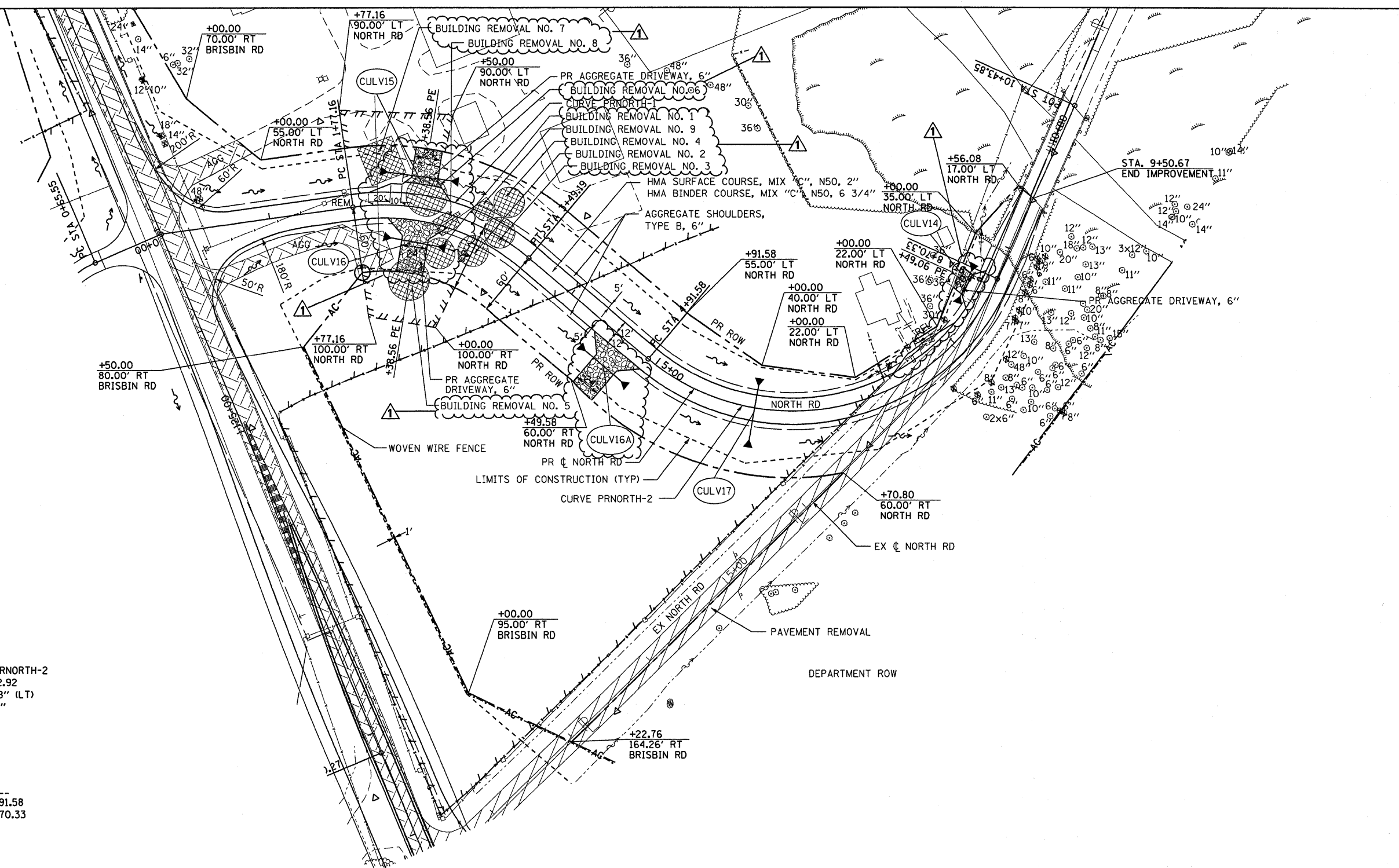
- CULV14** STA. 8+52
36.0' P CUL A 1 15
SLOPE = 0.32%
2-PRC FL END SEC 15
US INV = 537.69
DS INV = 537.57
FES STA 8+22, 27' LT
FES STA 8+79, 25' RT
- CULV15** STA. 2+27.55
60.0' P CUL CL D 1 15
SLOPE = 1.20%
2-END SEC 15
US INV = 542.80
DS INV = 541.94
FES STA 1+97.55, 31' LT
FES STA 2+69.55, 31' RT
- CULV16** STA. 2+38.56
45.0' P CUL CL D 1 15
SLOPE = 1.26%
2-END SEC 15
US INV = 542.40
DS INV = 541.69
FES STA 2+10, 29' RT
FES STA 2+67, 29' RT
- CULV16A** STA. 4+64.58
42.0' P CUL CL D 1 15
SLOPE = 1.26%
2-END SEC 15
US INV = 542.71
DS INV = 542.05
FES STA 4+37.17, 31' RT
FES STA 4+91.57, 32' RT
- CULV17** STA. 6+00.00
54.0' P CUL A 1 18
SLOPE = 0.84%
2-PRC FL END SEC 18
US INV = 537.17
DS INV = 536.66
FES STA 6+00, 27' LT
FES STA 6+00, 33' RT

PROP. CURVE PRNORTH-1
 PI STA. = 2+68.60
 $\Delta = 48^\circ 04' 53''$ (RT)
 D = 27° 56' 57"
 R = 205.00'
 T = 91.45'
 L = 172.03'
 E = 19.47'
 e = 4.0%
 T.R. = -----
 S.E. RUN = -----
 P.C. STA. = 1+77.16
 P.T. STA. = 3+49.19

PROP. CURVE PRNORTH-2
 PI STA. = 7+62.92
 $\Delta = 105^\circ 51' 28''$ (LT)
 D = 27° 56' 57"
 R = 205.00'
 T = 271.34'
 L = 378.75'
 E = 135.08'
 e = 4.0%
 T.R. = -----
 S.E. RUN = -----
 P.C. STA. = 4+91.58
 P.T. STA. = 8+70.33

LEGEND

- PAVEMENT REMOVAL
- EARTH EXCAVATION
- STABILIZED SHOULDER REMOVAL
- DRIVEWAY PAVEMENT REMOVAL
- REMOVAL ITEM
- SIGN REMOVAL
- TREE REMOVAL
- STORM SEWER REMOVAL
- INLET REMOVAL
- MANHOLE REMOVAL
- EXISTING CONTROL POINT



FILE NAME =	USER NAME = schwankerg	DESIGNED - CGC	REVISED - IDOT 8-27-10	STATE OF ILLINOIS DEPARTMENT OF TRANSPORTATION	NORTH FRONTAGE ROAD PLAN			F.A.U. RTE.	SECTION	COUNTY	TOTAL SHEETS	SHEET NO.
ca:\pw_work\pidot\schwankerg\dms82781\ND66488-shr-plnprf-North.dgn	PLOT SCALE = 50.0000' / IN.	CHECKED - JPW	REVISED -		SCALE: 1"=50'	SHEET NO. 58 OF 351 SHEETS	STA. 0+00.00 TO STA. 10+43.85	(32,47-4) HBK-4 & GND	GRUNDY	351	58	
PLOT DATE = Aug 27, 2010 - 11:45:22 AM	DATE Aug 27, 2010 - 11:45:22 AM	REVISED -			ADDENDUM REVISED 9-01-10 MJ SHEET			CONTRACT NO. 66408				
					ILLINOIS FED. AID PROJECT			FAI 80 & FAS 297 / FAU 392				