

INDEX OF SHEETS

1	COVER SHEET
2	GENERAL NOTES
3	SUMMARY OF QUANTITIES
10-17	TYPICAL SECTIONS
18-31	SCHEDULES OF QUANTITIES
32-36	ALIGNMENTS, TIES AND BENCHMARKS
37-61	PLAN AND PROFILE SHEETS
62-109	STAGING PLANS
110-123	PAVEMENT MARKING, EROSION AND SEDIMENT CONTROL PLANS AND DETAILS
124-126	DRAINAGE AND UTILITY PLANS
127-129	RIGHT OF WAY
130-132	INTERSECTION DETAILS
133-134	TRANSITION APPROACH CHANNELIZED DETAIL
135-137	SUPERELEVATION DETAILS
138-141	GRADING PLAN
142-146	TRAFFIC SIGNAL PLANS
147-148	SIGNAL FOUNDATION SOIL BORINGS
149-154	SIGNING PLANS
155-164	DISTRICT CADD DETAILS
165-166	SPECIAL DETAILS
167	LIGHTING GENERAL NOTES AND LEGEND
168-172	ROADWAY LIGHTING PLAN
173	ROADWAY TEMPORARY LIGHTING PLAN
174	UNDERPASS LIGHTING PLAN
175	WIRING DIAGRAM
176	HIGHMAST AIMING DIAGRAM
177-181	ROADWAY LIGHTING DETAIL
182	CONCRETE FOUNDATION DETAIL
183-189	ROADWAY LIGHTING SOIL BORINGS
190-282	CROSS SECTIONS
283-313	STRUCTURE PLANS - BRISBIN RD
314-332	STRUCTURE PLANS - RAMP B
333-351	STRUCTURE PLANS - RAMP C
351A-351K	EXISTING BRISBIN ROAD BRIDGE PLANS

FOR LIST OF HIGHWAY STANDARDS, SEE SHEET NO. 2

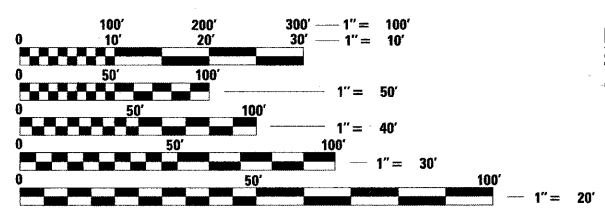
FUNCTIONAL CLASSIFICATION

BRISBIN RD: URBAN MAJOR COLLECTOR
 2010 ADT=2,200
 2020 ADT=13,200
 2030 ADT=16,500

I-80: RURAL INTERSTATE
 2010 ADT=34,100
 2020 ADT=47,960
 2030 ADT=60,560

NORTH RD: LOCAL RD
 2010 ADT=400
 2020 ADT=400
 2030 ADT=500

US 6: URBAN MAJOR COLLECTOR
 2010 ADT=7,900
 2020 ADT=15,600



FULL SIZE PLANS HAVE BEEN PREPARED USING STANDARD ENGINEERING SCALES. REDUCED SIZED PLANS WILL NOT CONFORM TO STANDARD SCALES. IN MAKING MEASUREMENTS ON REDUCED PLANS, THE ABOVE SCALES MAY BE USED.

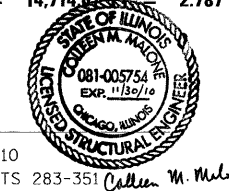
J.U.L.I.E.
 JOINT UTILITY LOCATION INFORMATION FOR EXCAVATION
 1-800-892-0123
 OR 811

REVISED 9-1-10
PROJECT ENGINEER: CRAIG REED, P.E.
SQUAD LEADER: MARK JONES, P.E.

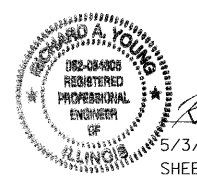
CONTRACT NO. 66408



Andrew K. Kascoy
 5/19/10
 SHEETS 1-166, 183-282
 EXP. 11/30/11



5/3/10
 SHEETS 283-351
 EXP. 11/30/10

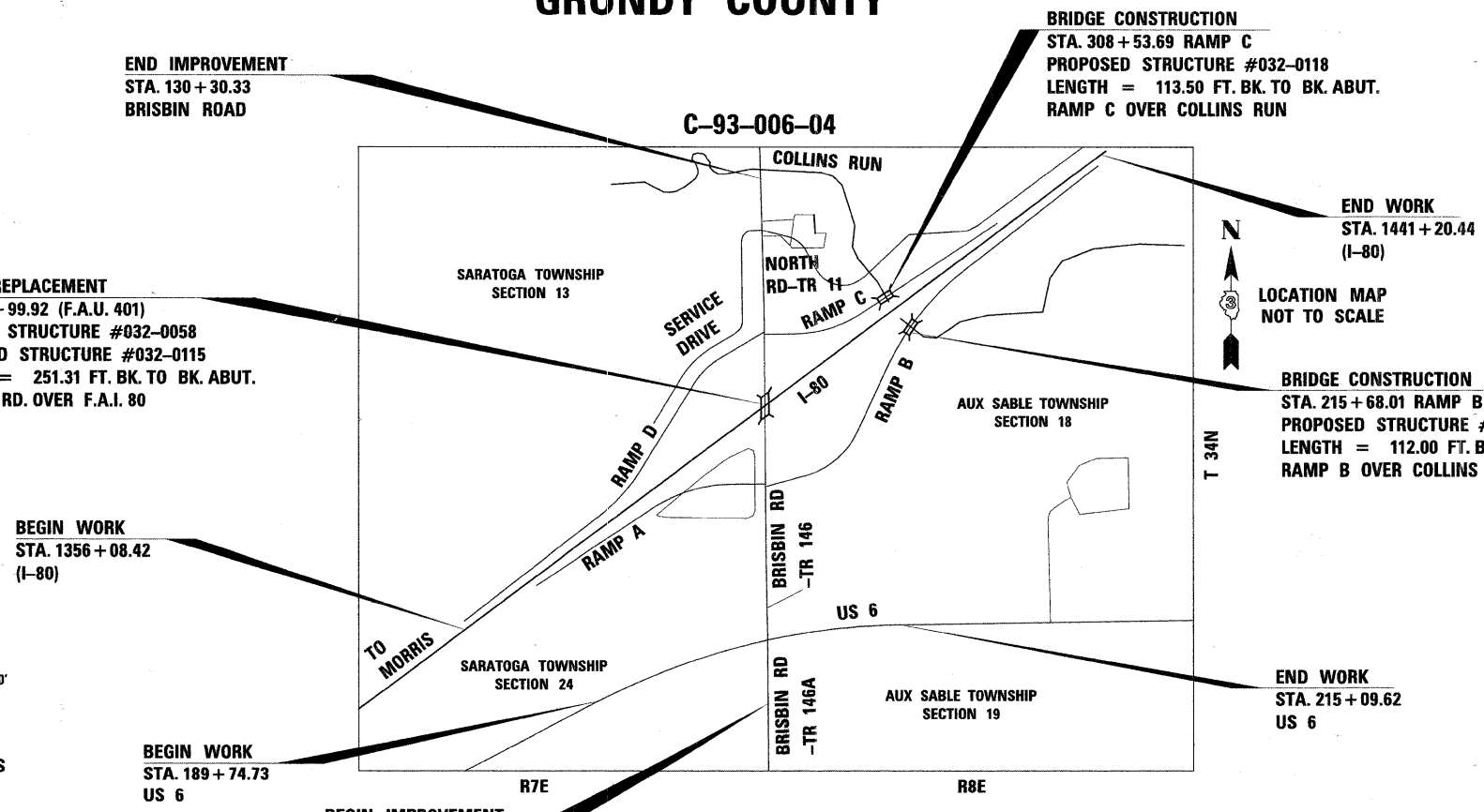


5/3/10
 SHEETS 167-182
 EXP. 11/30/11

STATE OF ILLINOIS
 DEPARTMENT OF TRANSPORTATION
 DIVISION OF HIGHWAYS

**PROPOSED
 HIGHWAY PLANS**

FAI 80 (I-80)
FAS 297 / FAU 392 (US 6)
SECTION (32,47-4)HBK-4 & (G)N
PROJECT ACIM-HPP-080-4(189)115
BRISBIN RD. INTERCHANGE CONSTRUCTION
US 6 INTERSECTION RECONSTRUCTION
GRUNDY COUNTY



END IMPROVEMENT
 STA. 130 + 30.33
 BRISBIN ROAD

BRIDGE REPLACEMENT
 STA. 114 + 99.92 (F.A.U. 401)
 EXISTING STRUCTURE #032-0058
 PROPOSED STRUCTURE #032-0115
 LENGTH = 251.31 FT. BK. TO BK. ABUT.
 BRISBIN RD. OVER F.A.I. 80

BEGIN WORK
 STA. 1356 + 08.42
 (I-80)

BEGIN WORK
 STA. 189 + 74.73
 US 6

BEGIN IMPROVEMENT
 STA. 87 + 53.10
 BRISBIN ROAD

BRIDGE CONSTRUCTION
 STA. 308 + 53.69 RAMP C
 PROPOSED STRUCTURE #032-0118
 LENGTH = 113.50 FT. BK. TO BK. ABUT.
 RAMP C OVER COLLINS RUN

END WORK
 STA. 1441 + 20.44
 (I-80)

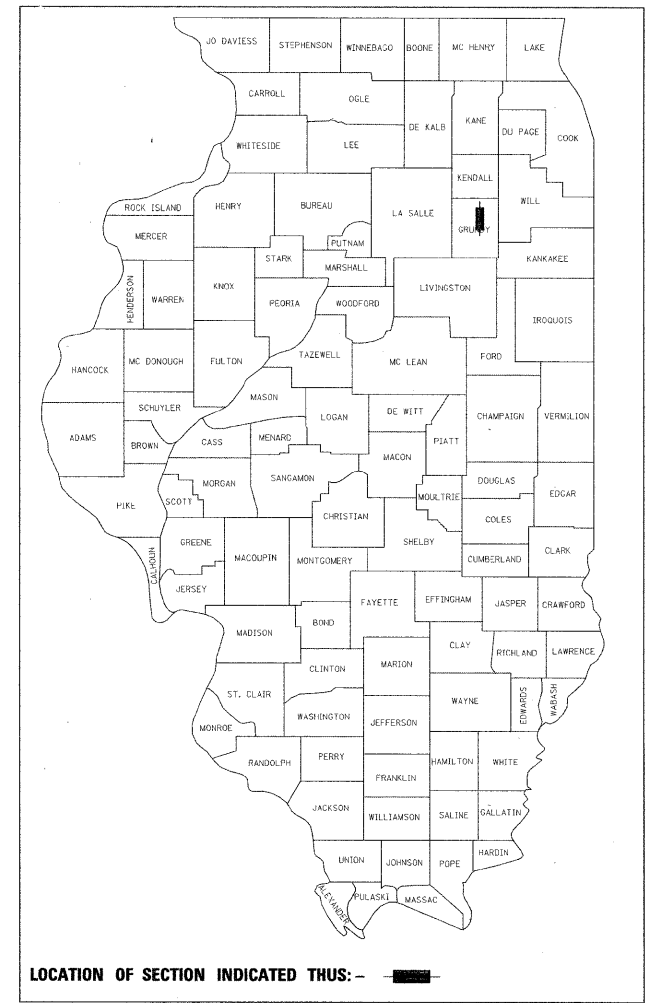
BRIDGE CONSTRUCTION
 STA. 215 + 68.01 RAMP B
 PROPOSED STRUCTURE #032-0117
 LENGTH = 112.00 FT. BK. TO BK. ABUT.
 RAMP B OVER COLLINS RUN

END WORK
 STA. 215 + 09.62
 US 6

GROSS LENGTH = 18,693.39 FT. = 3.540 MILE
 NET LENGTH = 14,714.67 FT. = 2.787 MILE

LOCHNER
 H.W. LOCHNER, INC.
 CONSULTING ENGINEERS & PLANNERS
 20 NORTH WACKER DRIVE SUITE 1200
 CHICAGO, IL 60606

F.A.U. RTE.	SECTION	COUNTY	TOTAL SHEETS	SHEET NO.
*	(32,47-4) HBK-4 & (G)N	GRUNDY	351	1
ILLINOIS			CONTRACT NO. 66408	
* FAI 80 & FAS 297 / FAU 392			351	13 = 364
D-93-011-04				



STATE OF ILLINOIS
 DEPARTMENT OF TRANSPORTATION
 DIVISION OF HIGHWAYS

SUBMITTED July 9 2010
 George Ryan
 DEPUTY DIRECTOR OF HIGHWAYS, REGION ENGINEER

August 13 2010
 Scott E. Stitt, P.E.
 ENGINEER OF DESIGN AND ENVIRONMENT

August 13 2010
 Christine M. Reed
 DIRECTOR OF HIGHWAYS, CHIEF ENGINEER

**PRINTED BY THE AUTHORITY
 OF THE STATE OF ILLINOIS**

SUMMARY OF QUANTITIES

CODE NUMBER	ITEM DESCRIPTION	UNITS	URBAN TOTAL QTY.	90% FED 10% STATE	90% FED 10% STATE	90% FED 5% STATE 5% CO.	90% FED 10% STATE	100% CO.	90% FED 10% STATE	90% FED 10% STATE	90% FED 10% STATE
				ROADWAY HMA 1000-2A	ROADWAY CONCRETE J000-2A	SIGNAL ITEMS Y030-1E	LIGHTING Y030-1E	DIFF. OF ULT. VS. INT. 1000-2A	BRIDGE BRISBIN X231-2A	BRIDGE RAMP B X081-2A	BRIDGE RAMP C X081-2A
40800050	INCIDENTAL HOT-MIX ASPHALT SURFACING	TON	24		24						
40200800	AGGREGATE SURFACE COURSE, TYPE B	TON	451		451						
Z0049810	REMOVAL AND DISPOSAL OF FRIABLE ASBESTOS, BUILDING NO. 10	L SUM	1		1						
Z0049901	REMOVAL AND DISPOSAL OF NON-FRIABLE ASBESTOS, BUILDING NO. 1	L SUM	1		1						
Z0049902	REMOVAL AND DISPOSAL OF NON-FRIABLE ASBESTOS, BUILDING NO. 2	L SUM	1		1						
Z0049903	REMOVAL AND DISPOSAL OF NON-FRIABLE ASBESTOS, BUILDING NO. 3	L SUM	1		1						
Z0049904	REMOVAL AND DISPOSAL OF NON-FRIABLE ASBESTOS, BUILDING NO. 4	L SUM	1		1						
Z0049906	REMOVAL AND DISPOSAL OF NON-FRIABLE ASBESTOS, BUILDING NO. 6	L SUM	1		1						
Z0049910	REMOVAL AND DISPOSAL OF NON-FRIABLE ASBESTOS, BUILDING NO. 10	L SUM	1		1						
Z0007601	BUILDING REMOVAL NO. 1	L SUM	1		1						
Z0007602	BUILDING REMOVAL NO. 2	L SUM	1		1						
Z0007603	BUILDING REMOVAL NO. 3	L SUM	1		1						
Z0007604	BUILDING REMOVAL NO. 4	L SUM	1		1						
Z0007605	BUILDING REMOVAL NO. 5	L SUM	1		1						
Z0007606	BUILDING REMOVAL NO. 6	L SUM	1		1						
Z0007607	BUILDING REMOVAL NO. 7	L SUM	1		1						
Z0007608	BUILDING REMOVAL NO. 8	L SUM	1		1						
Z0007609	BUILDING REMOVAL NO. 9	L SUM	1		1						
Z0007610	BUILDING REMOVAL NO. 10	L SUM	1		1						

• FAI 80 & FAS 297 / FAU 392

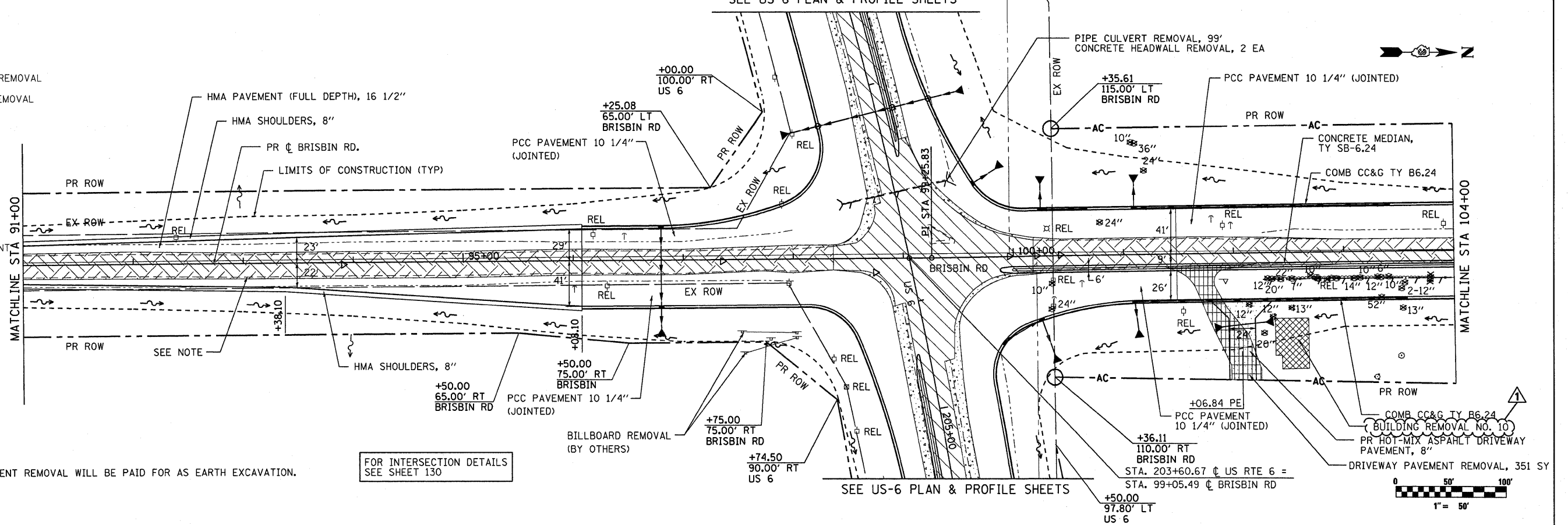
LEGEND

- PAVEMENT REMOVAL
- EARTH EXCAVATION
- STABILIZED SHOULDER REMOVAL
- DRIVEWAY PAVEMENT REMOVAL
- REMOVAL ITEM
- SIGN REMOVAL
- TREE REMOVAL
- STORM SEWER REMOVAL
- INLET REMOVAL
- MANHOLE REMOVAL
- EXISTING CONTROL POINT

DATE	
BY	
REVISIONS	
NO.	
DATE	
BY	
REVISIONS	
NO.	

DATE	
BY	
REVISIONS	
NO.	
DATE	
BY	
REVISIONS	
NO.	

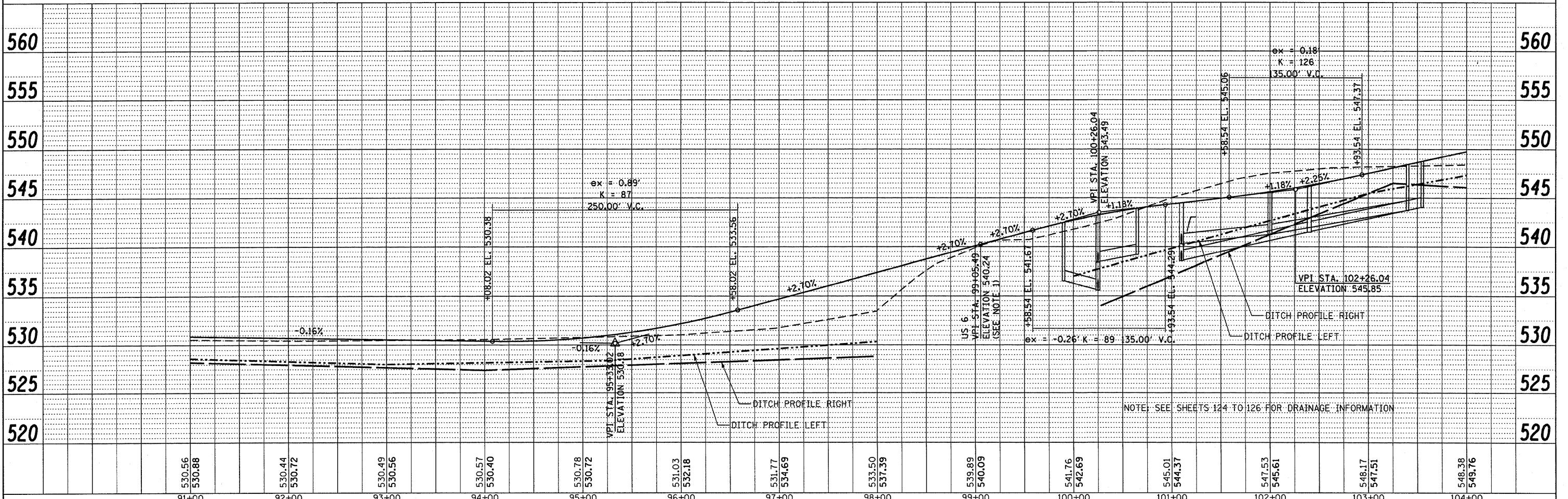
SEE US-6 PLAN & PROFILE SHEETS



NOTE: BRISBIN ROAD PAVEMENT REMOVAL WILL BE PAID FOR AS EARTH EXCAVATION.

FOR INTERSECTION DETAILS SEE SHEET 130

SEE US-6 PLAN & PROFILE SHEETS



FILE NAME =	USER NAME = schwankerg	DESIGNED - CGC	REVISED - IDOT 8-27-10
alpha_work\pwsd\schwankerg\dms82781\036408-ht-plnprf-Brisbin.dgn		DRAWN - CGC	REVISED -
PLOT SCALE = 50,00000 ' / IN.		CHECKED - JPW	REVISED -
PLOT DATE = Aug 27, 2010 - 11:48:27 AM		DATE Aug 27, 2010 - 11:48:27 AM	REVISED -

STATE OF ILLINOIS
DEPARTMENT OF TRANSPORTATION

BRISBIN ROAD
PLAN & PROFILE

F.A.U. RTE.	SECTION	COUNTY	TOTAL SHEETS	SHEET NO.
	(32,47-4) HBK-4 & G(N)	GRUNDY	351	38
CONTRACT NO. 66408				

SCALE: 1"=50' SHEET NO. 38 OF 351 SHEETS STA. 91+00 TO STA. 104+00

ADDENDUM REVISED 9-01-10 MJ
SHEET

ILLINOIS FED. AID PROJECT
FAT 80 & FAS 297 / FAU 392

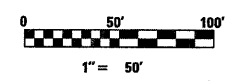
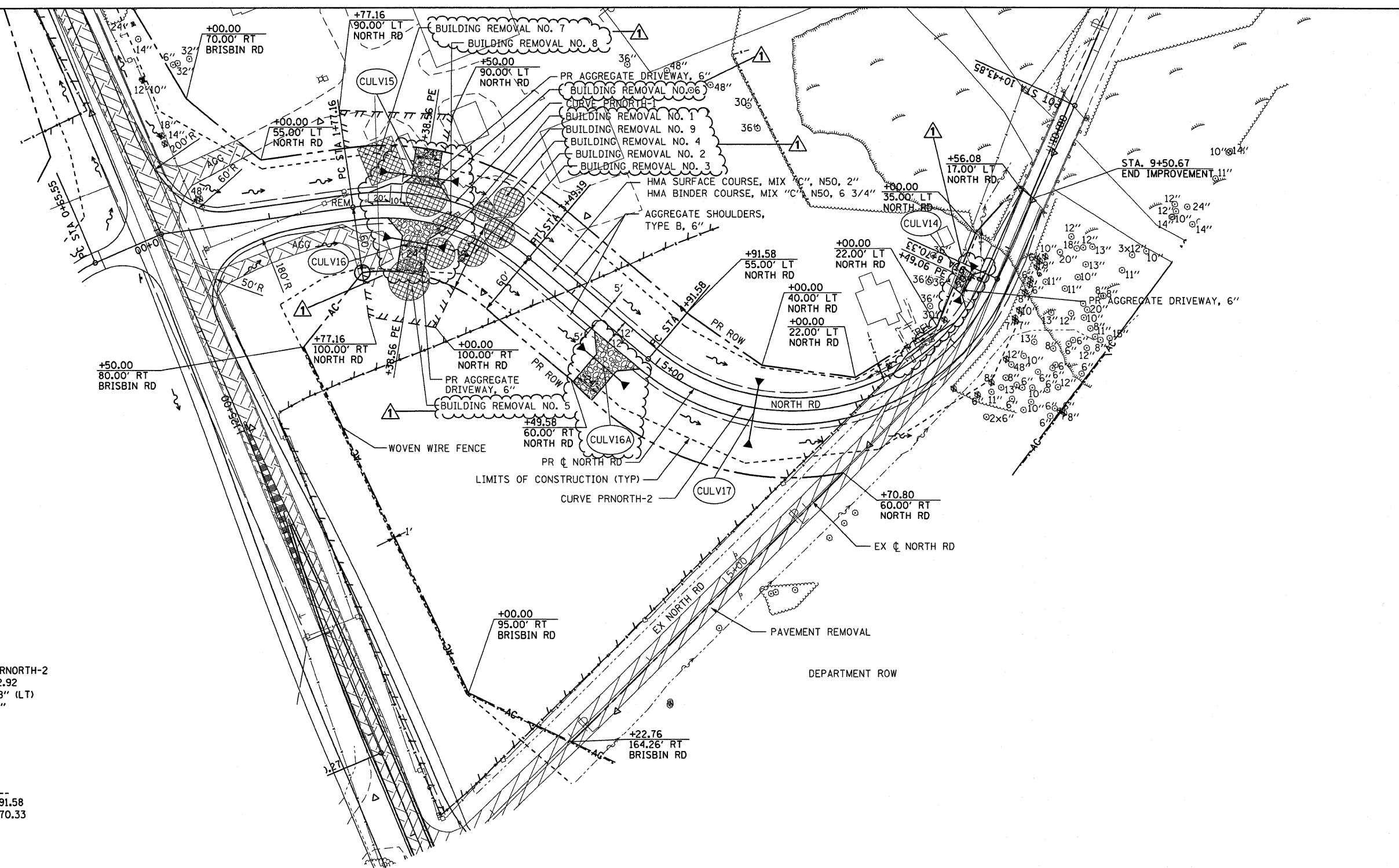


- CULV14** STA. 8+52
36.0' P CUL A 1 15
SLOPE = 0.32%
2-PRC FL END SEC 15
US INV = 537.69
DS INV = 537.57
FES STA 8+22, 27' LT
FES STA 8+79, 25' RT
- CULV15** STA. 2+27.55
60.0' P CUL CL D 1 15
SLOPE = 1.20%
2-END SEC 15
US INV = 542.80
DS INV = 541.94
FES STA 1+97.55, 31' LT
FES STA 2+69.55, 31' RT
- CULV16** STA. 2+38.56
45.0' P CUL CL D 1 15
SLOPE = 1.26%
2-END SEC 15
US INV = 542.40
DS INV = 541.69
FES STA 2+10, 29' RT
FES STA 2+67, 29' RT
- CULV16A** STA. 4+64.58
42.0' P CUL CL D 1 15
SLOPE = 1.26%
2-END SEC 15
US INV = 542.71
DS INV = 542.05
FES STA 4+37.17, 31' RT
FES STA 4+91.57, 32' RT
- CULV17** STA. 6+00.00
54.0' P CUL A 1 18
SLOPE = 0.84%
2-PRC FL END SEC 18
US INV = 537.17
DS INV = 536.66
FES STA 6+00, 27' LT
FES STA 6+00, 33' RT

- PROP. CURVE PRNORTH-1**
PI STA. = 2+68.60
 $\Delta = 48^\circ 04' 53''$ (RT)
D = 27° 56' 57"
R = 205.00'
T = 91.45'
L = 172.03'
E = 19.47'
e = 4.0%
T.R. = -----
S.E. RUN = -----
P.C. STA. = 1+77.16
P.T. STA. = 3+49.19
- PROP. CURVE PRNORTH-2**
PI STA. = 7+62.92
 $\Delta = 105^\circ 51' 28''$ (LT)
D = 27° 56' 57"
R = 205.00'
T = 271.34'
L = 378.75'
E = 135.08'
e = 4.0%
T.R. = -----
S.E. RUN = -----
P.C. STA. = 4+91.58
P.T. STA. = 8+70.33

LEGEND

- PAVEMENT REMOVAL
- EARTH EXCAVATION
- STABILIZED SHOULDER REMOVAL
- DRIVEWAY PAVEMENT REMOVAL
- REMOVAL ITEM
- SIGN REMOVAL
- TREE REMOVAL
- STORM SEWER REMOVAL
- INLET REMOVAL
- MANHOLE REMOVAL
- EXISTING CONTROL POINT



FILE NAME =	USER NAME = schwankerg	DESIGNED - CGC	REVISED - IDOT 8-27-10	STATE OF ILLINOIS DEPARTMENT OF TRANSPORTATION	NORTH FRONTAGE ROAD PLAN	F.A.U. RTE.	SECTION	COUNTY	TOTAL SHEETS	SHEET NO.	
ca:\pwork\pidot\schwankerg\dms82781\066488-shr-plnprf-North.dgn	PLOT SCALE = 50,0000 / IN.	CHECKED - JPW	REVISED -			32,47-4	HBK-4 & GND	GRUNDY	351	58	
PLOT DATE = Aug 27, 2010 - 11:45:22 AM	DATE Aug 27, 2010 - 11:45:22 AM	REVISED -				SCALE: 1"=50'		SHEET NO. 58 OF 351 SHEETS		STA. 0+00.00 TO STA. 10+43.85	
						ILLINOIS FED. AID PROJECT		CONTRACT NO. 66408			

ADDENDUM REVISED 9-01-10 MJ SHEET
FAI 80 & FAS 297 / FAU 392