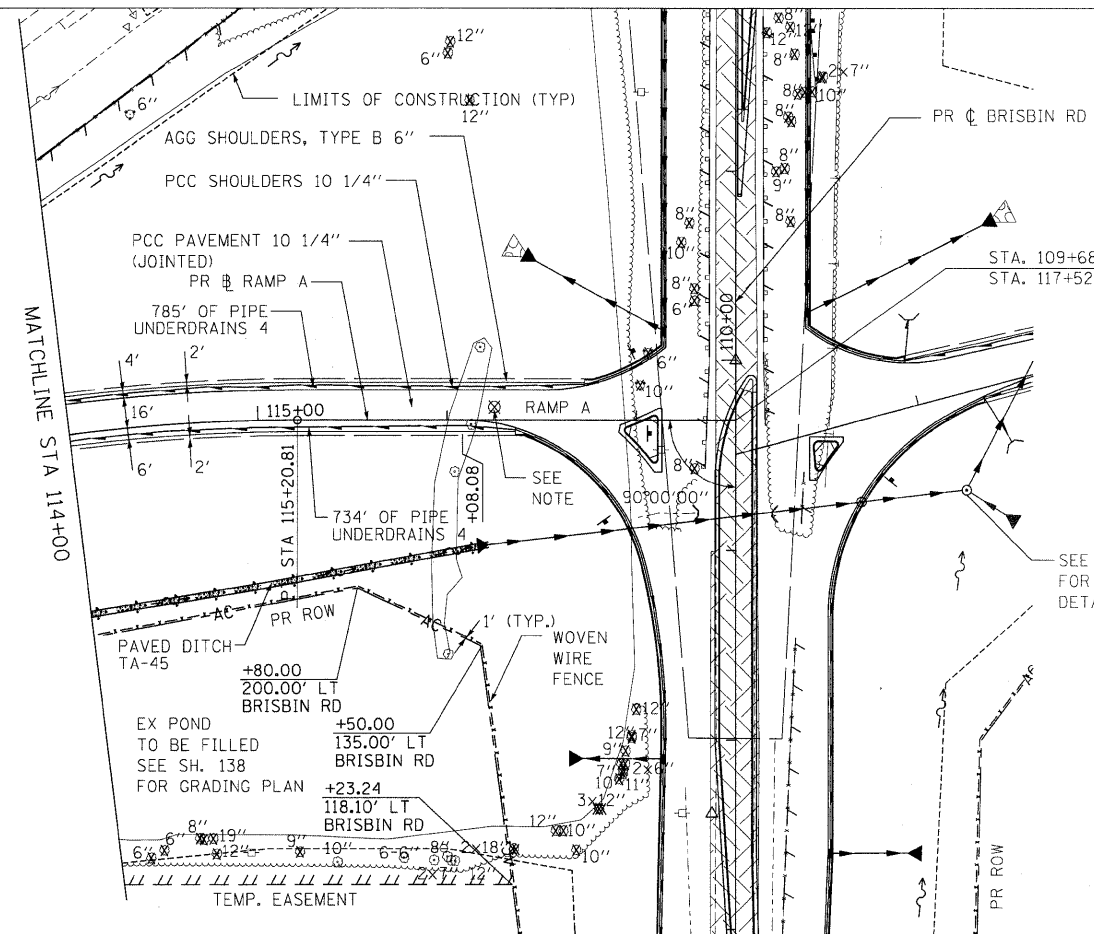


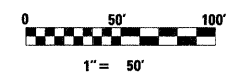
PLAN	SURVEYED	DATE
	PLOTTED	BY
	CHECKED	
	BY	
	DATE	
	NO.	
	NO.	
	NO.	

PR FILE	SURVEYED	DATE
	PLOTTED	BY
	CHECKED	
	BY	
	DATE	
	NO.	
	NO.	
	NO.	

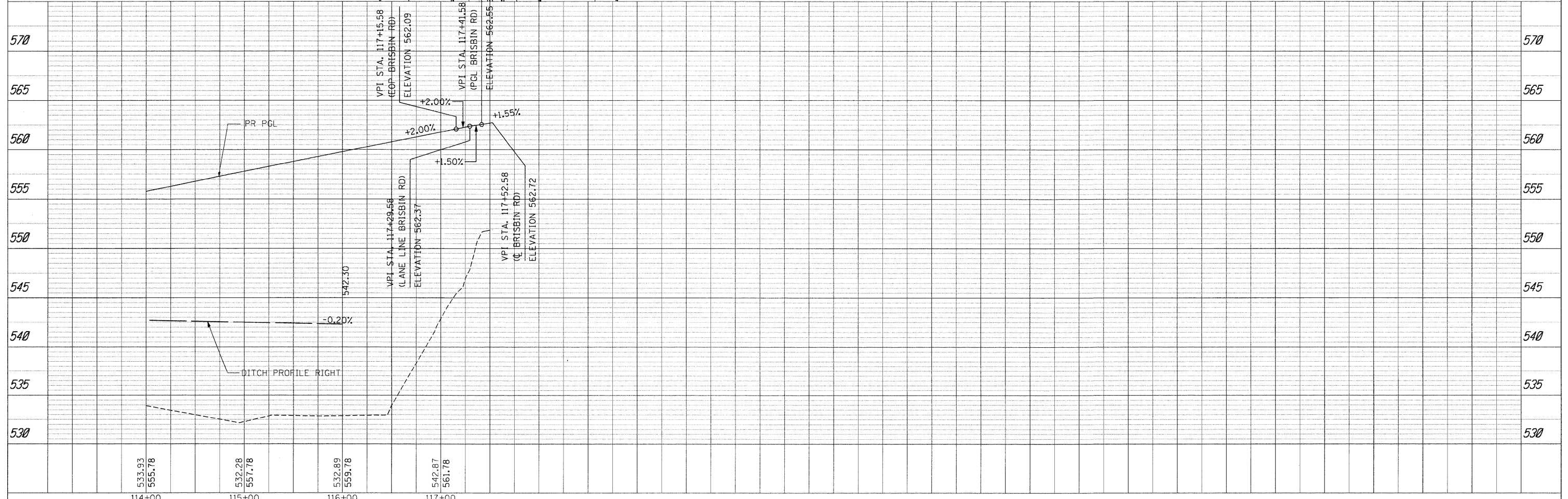


LEGEND

- PAVEMENT REMOVAL
- EARTH EXCAVATION
- STABILIZED SHOULDER REMOVAL
- DRIVEWAY PAVEMENT REMOVAL
- REMOVAL ITEM
- SIGN REMOVAL
- TREE REMOVAL
- STORM SEWER REMOVAL
- INLET REMOVAL
- MANHOLE REMOVAL
- EXISTING CONTROL POINT
- SETTLEMENT PLATFORM



NOTE:
 ONE SETTLEMENT PLATFORM AT STATION 116+25 AND ANOTHER TO BE USED AT THE DISCRETION OF THE ENGINEER.



FILE NAME =	USER NAME = .USER.	DESIGNED - CGC	REVISED -	STATE OF ILLINOIS DEPARTMENT OF TRANSPORTATION	RAMP A PLAN & PROFILE	F.A.U. RTE.	SECTION	COUNTY	TOTAL SHEETS	SHEET NO.
\\11812\CADD Sheets\0366408-shr-plnprf-RampA.dgn	PLOT SCALE = #SCALE#	DRAWN - CGC	REVISED -			32,47-4	HBK-4 & GN	GRUNDY	351	42
PLOT DATE = 5/21/2010	DATE - 5/21/2010	CHECKED - JPW	REVISED -			CONTRACT NO. 66408				
						ILLINOIS FED. AID PROJECT FAT 80 & FAS 297 / FAU 392				