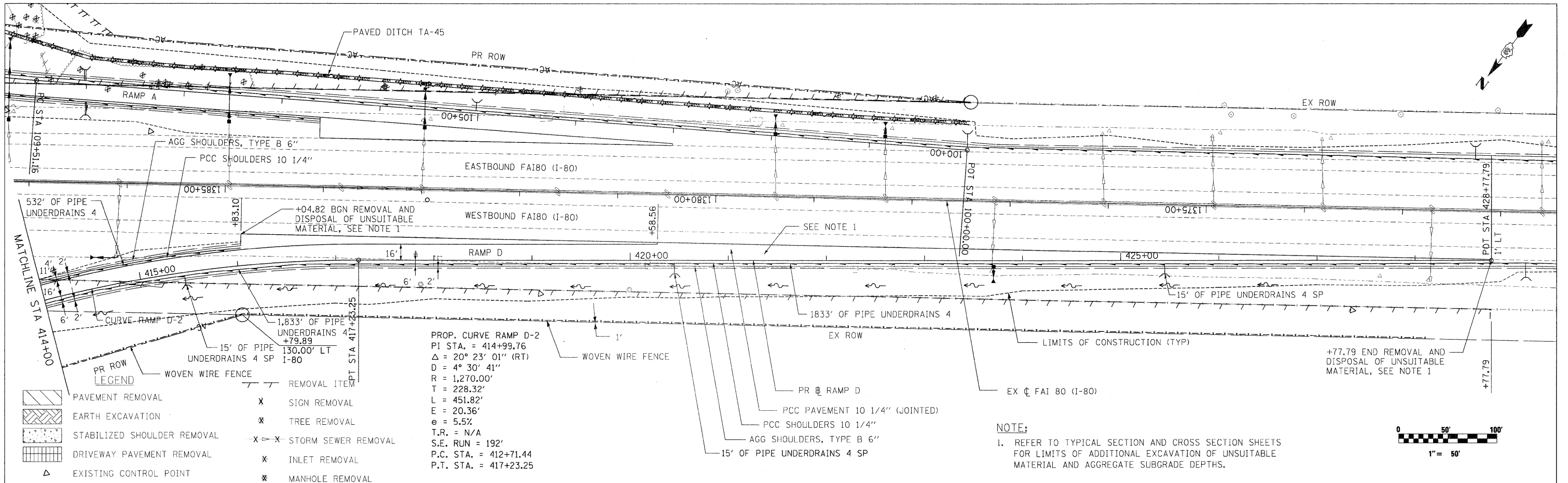


PLAN	SURVEYED	DATE
	PLOTTED	BY
	CHECKED	
	REVISIONS	
	NO. OF WAY CHECKED	
	CADD FILE NAME	
	NO.	

PF	FILE	DATE
	SURVEYED	BY
	PLOTTED	
	CHECKED	
	REVISIONS	
	NO. OF WAY CHECKED	
	CADD FILE NAME	
	NO.	

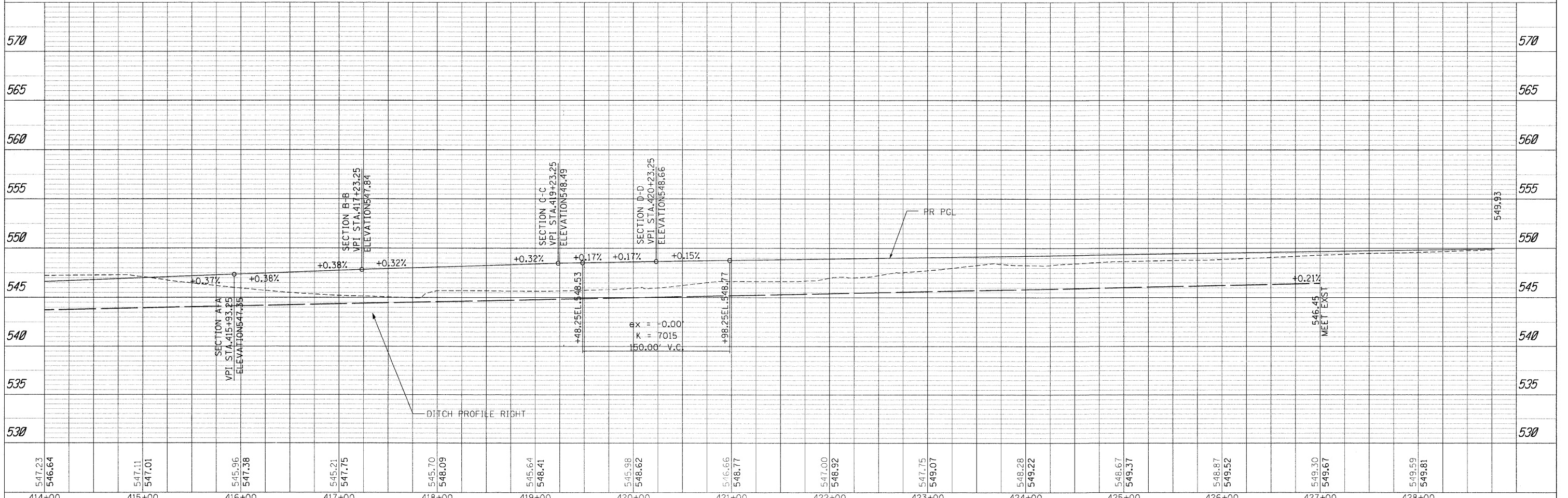
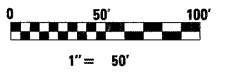


LEGEND

	PAVEMENT REMOVAL		REMOVAL ITEM
	EARTH EXCAVATION	X	SIGN REMOVAL
	STABILIZED SHOULDER REMOVAL	X	TREE REMOVAL
	DRIVEWAY PAVEMENT REMOVAL	X	STORM SEWER REMOVAL
	EXISTING CONTROL POINT	X	INLET REMOVAL
		X	MANHOLE REMOVAL

PROP. CURVE RAMP D-2
 PI STA. = 414+99.76
 $\Delta = 20^\circ 23' 01''$ (RT)
 $D = 4^\circ 30' 41''$
 $R = 1,270.00'$
 $T = 228.32'$
 $L = 451.82'$
 $E = 20.36'$
 $e = 5.5\%$
 T.R. = N/A
 S.E. RUN = 192'
 P.C. STA. = 412+71.44
 P.T. STA. = 417+23.25

NOTE:
 1. REFER TO TYPICAL SECTION AND CROSS SECTION SHEETS FOR LIMITS OF ADDITIONAL EXCAVATION OF UNSUITABLE MATERIAL AND AGGREGATE SUBGRADE DEPTHS.



FILE NAME =	USER NAME = .USER	DESIGNED - CGC	REVISED -	STATE OF ILLINOIS DEPARTMENT OF TRANSPORTATION	RAMP D PLAN & PROFILE	F.A.U. RTE.	SECTION	COUNTY	TOTAL SHEETS	SHEET NO.
t:\1812\cadd sheets\0366408-sht-p\inprf-RampD.dgn	PLOT SCALE = #SCALE#	DRAWN - CGC	REVISED -			32,47-4)	HBK-4 & G(N)	GRUNDY	351	49
PLOT DATE = 5/21/2010	DATE = 5/21/2010	CHECKED - JPW	REVISED -			CONTRACT NO. 66408				
		DATE = 5/21/2010	REVISED -			ILLINOIS FED. AID PROJECT				