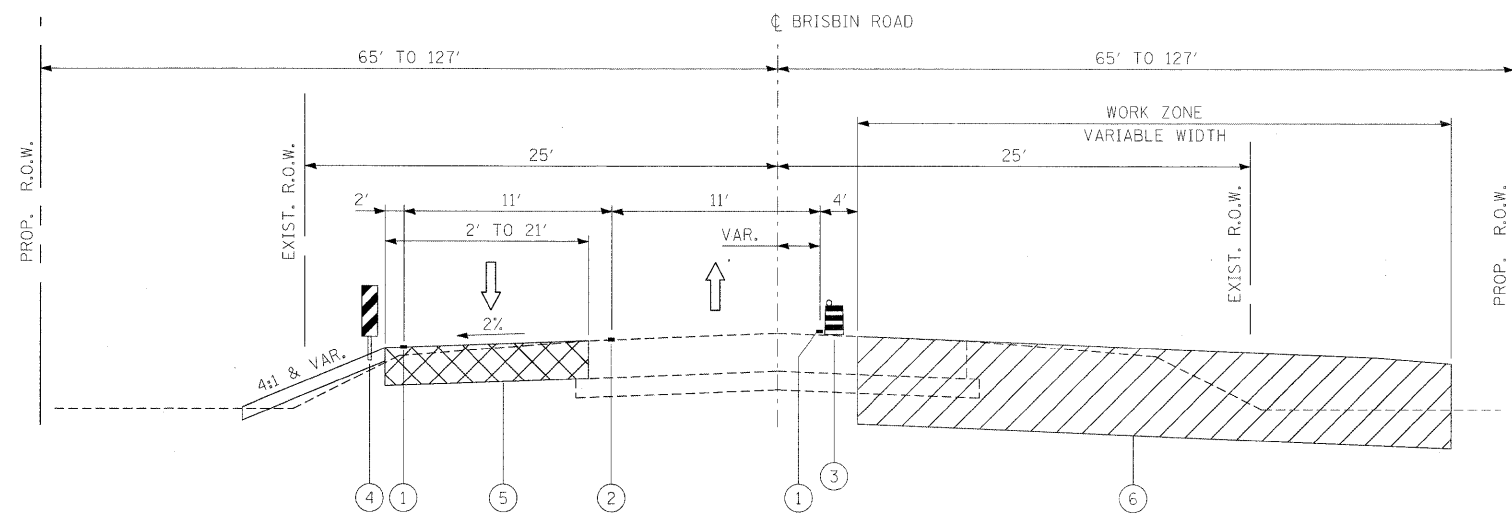


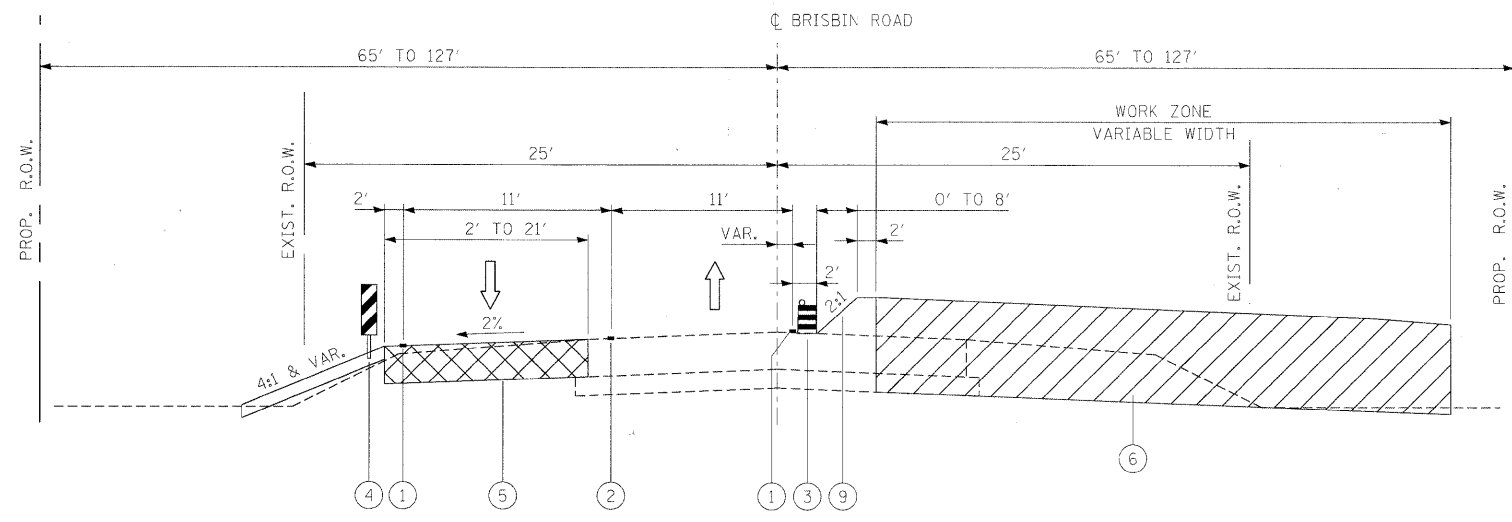
BRISBIN RD STAGE 1

STA. 83+52.27 TO STA. 98+40.64



BRISBIN RD STAGE 2

STA. 83+52.97 TO STA. 95+00.00



BRISBIN RD STAGE 2

STA. 95+00.00 TO STA. 98+62.27

LEGEND:

- ① TEMPORARY PAVEMENT MARKING LINE, 4 INCHES (WHITE)
- ② TEMPORARY PAVEMENT MARKING LINE, 4 INCHES (DOUBLE YELLOW)
- ③ DRUM WITH STEADY BURNING LIGHT
- ④ DOUBLE VERTICAL PANELS (BACK TO BACK) WITH BI-DIRECTIONAL STEADY BURNING LIGHTS
- ⑤ TEMPORARY PAVEMENT
- ⑥ WORK ZONE
- ⑦ EXISTING PAVEMENT MARKING LINE
- ⑧ TEMPORARY CONCRETE BARRIER
- ⑨ 2:1 TRANSITION SLOPE BETWEEN EXISTING AND PROPOSED PAVEMENTS

NOTE:

BRISBIN RD NORTH OF US-6 IS CLOSED TO TRAFFIC DURING CONSTRUCTION. SEE US-6 STAGE 2 MAINTENANCE OF TRAFFIC SHEETS FOR CLOSING LOCATION.

FILE NAME = t:\1812\CADD Sheets\0366408-sht-staging.dgn	USER NAME = .USER.	DESIGNED - JPW	REVISED -	STATE OF ILLINOIS DEPARTMENT OF TRANSPORTATION	MAINTENANCE OF TRAFFIC BRISBIN RD TYPICAL CROSS-SECTIONS	F.A.U. RTE.	SECTION	COUNTY	TOTAL SHEETS	SHEET NO.
PLOT SCALE = #SCALE#	CHECKED - AKK	DATE - 5/20/2010	REVISED -			• (32,47-4) HBK-4 & G(N)	GRUNDY	351	68	
PLOT DATE = 5/20/2010	DATE - 5/20/2010	REVISED -	SCALE: NTS			SHEET NO. 68 OF 351 SHEETS	STA.	TO STA.	CONTRACT NO. 66408	
						ILLINOIS FED. AID PROJECT				

• FAI 80 & FAS 297 / FAU 392