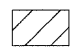


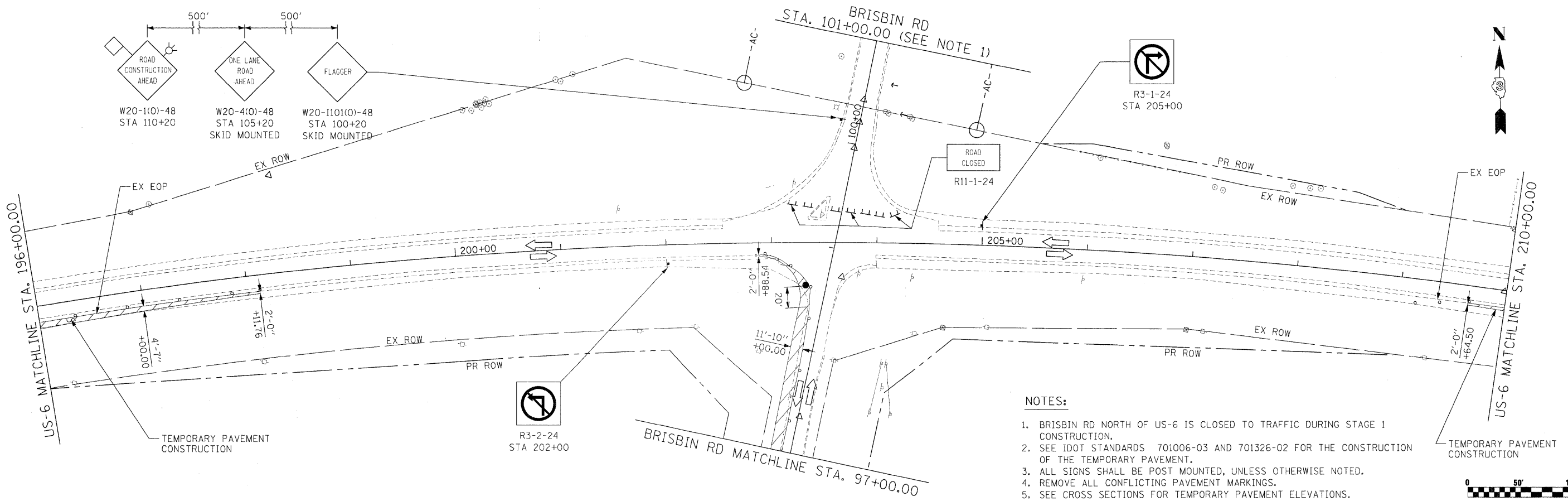
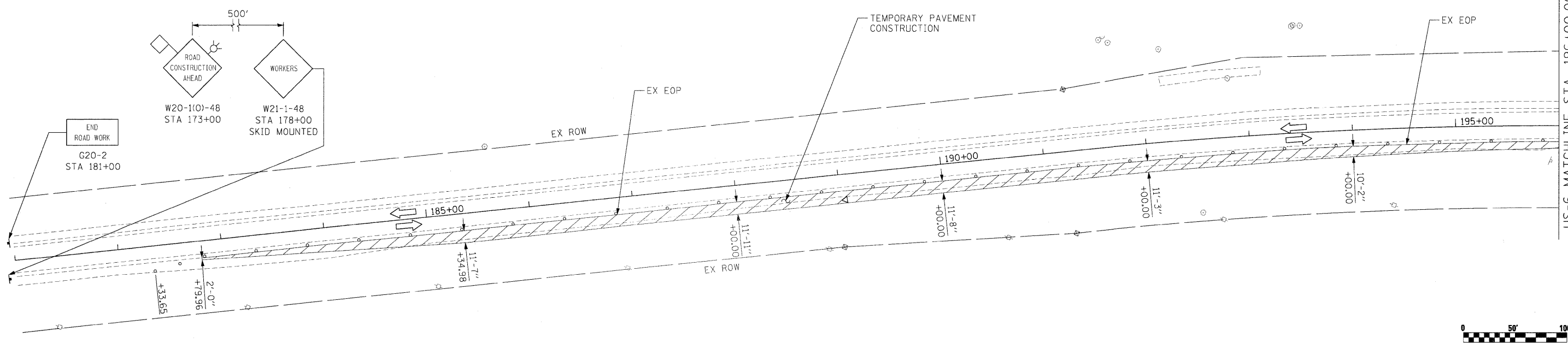


**LEGEND**

-  WORK ZONE
-  FLAGGER WITH CONTROL SIGNAL
-  DRUMS WITH BI-DIRECTIONAL STEADY BURN LIGHTS @ 50' CENTERS, 25' CENTERS ALONG TAPERS AND 12' CENTERS ALONG RADIUS RETURNS



- NOTES:**
1. BRISBIN RD NORTH OF US-6 IS CLOSED TO TRAFFIC DURING STAGE 1 CONSTRUCTION.
  2. SEE IDOT STANDARDS 701006-03 AND 701326-02 FOR THE CONSTRUCTION OF THE TEMPORARY PAVEMENT.
  3. ALL SIGNS SHALL BE POST MOUNTED, UNLESS OTHERWISE NOTED.
  4. REMOVE ALL CONFLICTING PAVEMENT MARKINGS.
  5. SEE CROSS SECTIONS FOR TEMPORARY PAVEMENT ELEVATIONS.

FILE NAME = t:\1812\CAD\ Sheets\0366408-ah1-staging.dgn	USER NAME = .USER.	DESIGNED - JPW	REVISED -	<b>STATE OF ILLINOIS DEPARTMENT OF TRANSPORTATION</b>	<b>MAINTENANCE OF TRAFFIC US-6 STAGE 1</b>	F.A.U. RTE. (32,47-4) HBK-4 & GIN	COUNTY GRUNDY	TOTAL SHEETS 351	SHEET NO. 77		
PLOT SCALE = #SCALE#						CHECKED - AKK	REVISIED -	CONTRACT NO. 66408			
PLOT DATE = 5/20/2010						DATE - 5/20/2010	REVISED -	ILLINOIS FED. AID PROJECT			
SCALE: 1"=50'		SHEET NO. 77 OF 351 SHEETS				STA. 183+00.00 TO STA. 210+00.00					