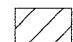


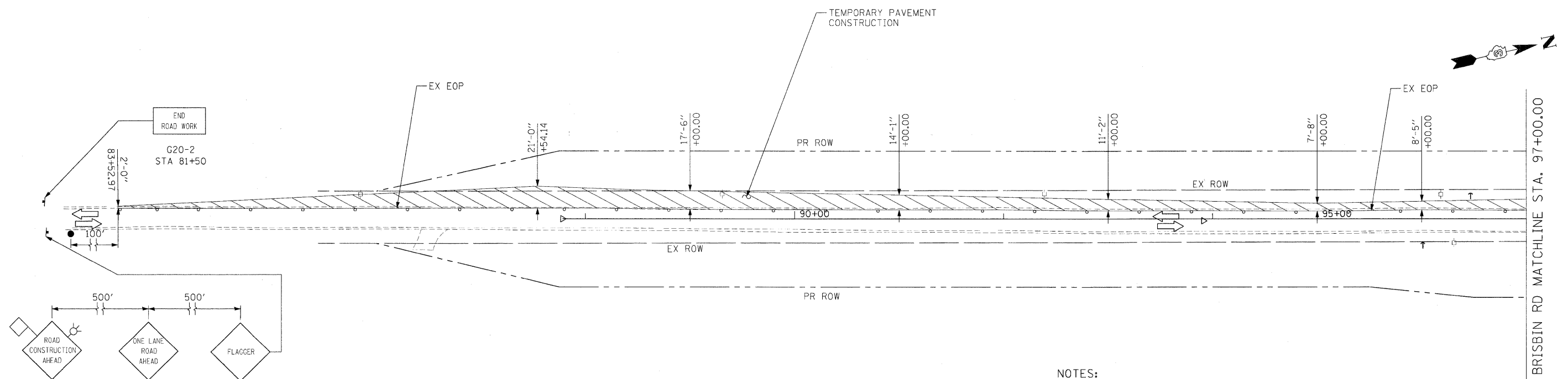
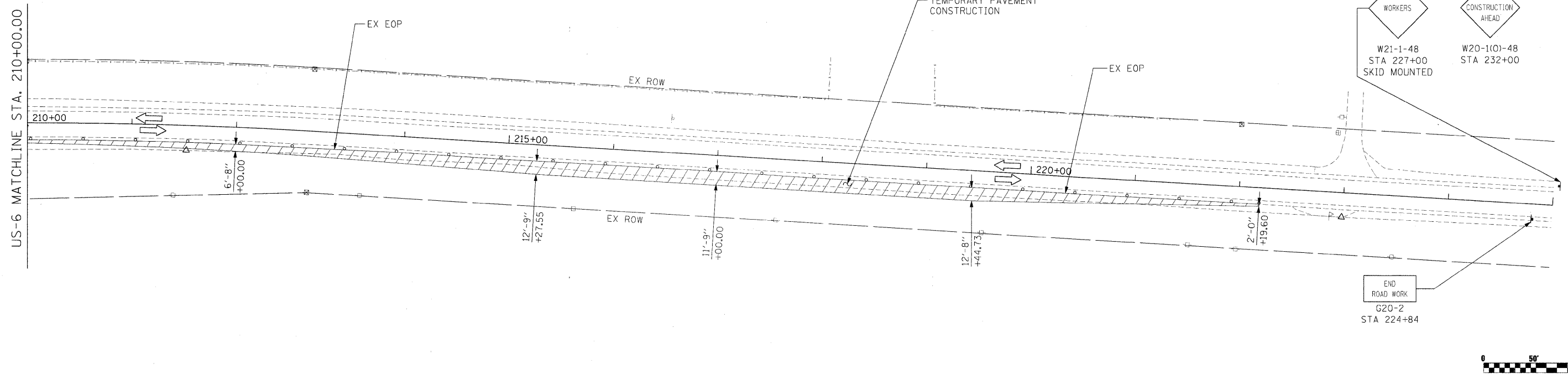


LEGEND

-  WORK ZONE
-  FLAGGER WITH CONTROL SIGNAL
-  DRUMS WITH BI-DIRECTIONAL STEADY BURN LIGHTS @ 50' CENTERS, 25' CENTERS ALONG TAPERS AND 12' CENTERS ALONG RADIUS RETURNS



NOTES:

1. BRISBIN RD NORTH OF US-6 IS OPEN TO TRAFFIC DURING STAGE 1 CONSTRUCTION.
2. SEE IDOT STANDARDS 701006-03 AND 701326-02 FOR THE CONSTRUCTION OF THE TEMPORARY PAVEMENT.
3. ALL SIGNS SHALL BE POST MOUNTED, UNLESS OTHERWISE NOTED.
4. REMOVE ALL CONFLICTING PAVEMENT MARKINGS.
5. SEE CROSS SECTIONS FOR TEMPORARY PAVEMENT ELEVATIONS.

FILE NAME =	USER NAME = .USER.	DESIGNED - JPW	REVISED -	STATE OF ILLINOIS DEPARTMENT OF TRANSPORTATION	MAINTENANCE OF TRAFFIC US-6, BRISBIN RD (SOUTH OF US6) STAGE 1		F.A.U. RTE.	SECTION	COUNTY	TOTAL SHEETS	SHEET NO.
\\s1812\CADD\Sheets\0366408-ah1-staging.dgn		DRAWN - BBW	REVISED -		SCALE: 1"=50'	SHEET NO. 78 OF 351 SHEETS	STA. 210+00.00 TO STA. 222+00.00	(32,47-4) HBK-4 & GIN)	GRUNDY	351	78
		CHECKED - AKK	REVISED -						CONTRACT NO. 66408		
		DATE - 5/20/2010	REVISED -						ILLINOIS FED. AID PROJECT		