
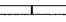
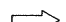





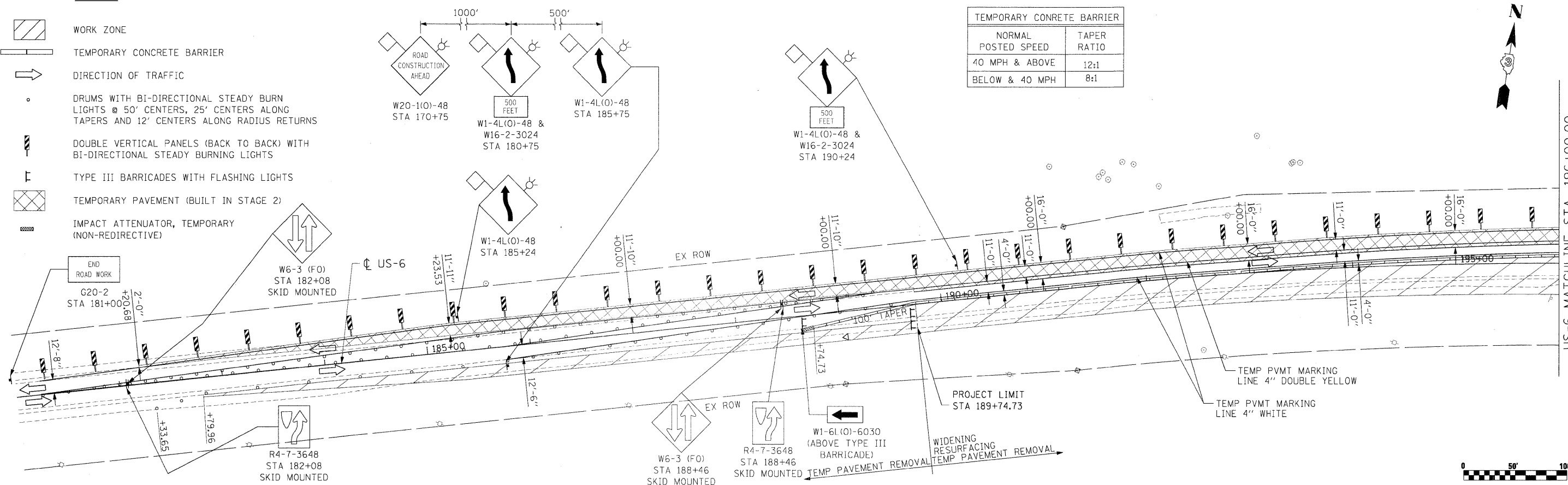


LEGEND

-  WORK ZONE
-  TEMPORARY CONCRETE BARRIER
-  DIRECTION OF TRAFFIC
-  DRUMS WITH BI-DIRECTIONAL STEADY BURN LIGHTS @ 50' CENTERS, 25' CENTERS ALONG TAPERS AND 12' CENTERS ALONG RADIUS RETURNS
-  DOUBLE VERTICAL PANELS (BACK TO BACK) WITH BI-DIRECTIONAL STEADY BURNING LIGHTS
-  TYPE III BARRICADES WITH FLASHING LIGHTS
-  TEMPORARY PAVEMENT (BUILT IN STAGE 2)
-  IMPACT ATTENUATOR, TEMPORARY (NON-REDIRECTIVE)

TEMPORARY CONCRETE BARRIER	
NORMAL POSTED SPEED	TAPER RATIO
40 MPH & ABOVE	12:1
BELOW & 40 MPH	8:1



NOTES:

1. SEE IDOT STANDARD 701331-03 DURING STAGE 3 CONSTRUCTION.
2. ALL SIGNS SHALL BE POST MOUNTED, UNLESS OTHERWISE NOTED.
3. REMOVE ALL CONFLICTING PAVEMENT MARKINGS.
4. BRISBIN RD NORTH OF US-6 IS CLOSED TO TRAFFIC DURING STAGE 3 CONSTRUCTION.

