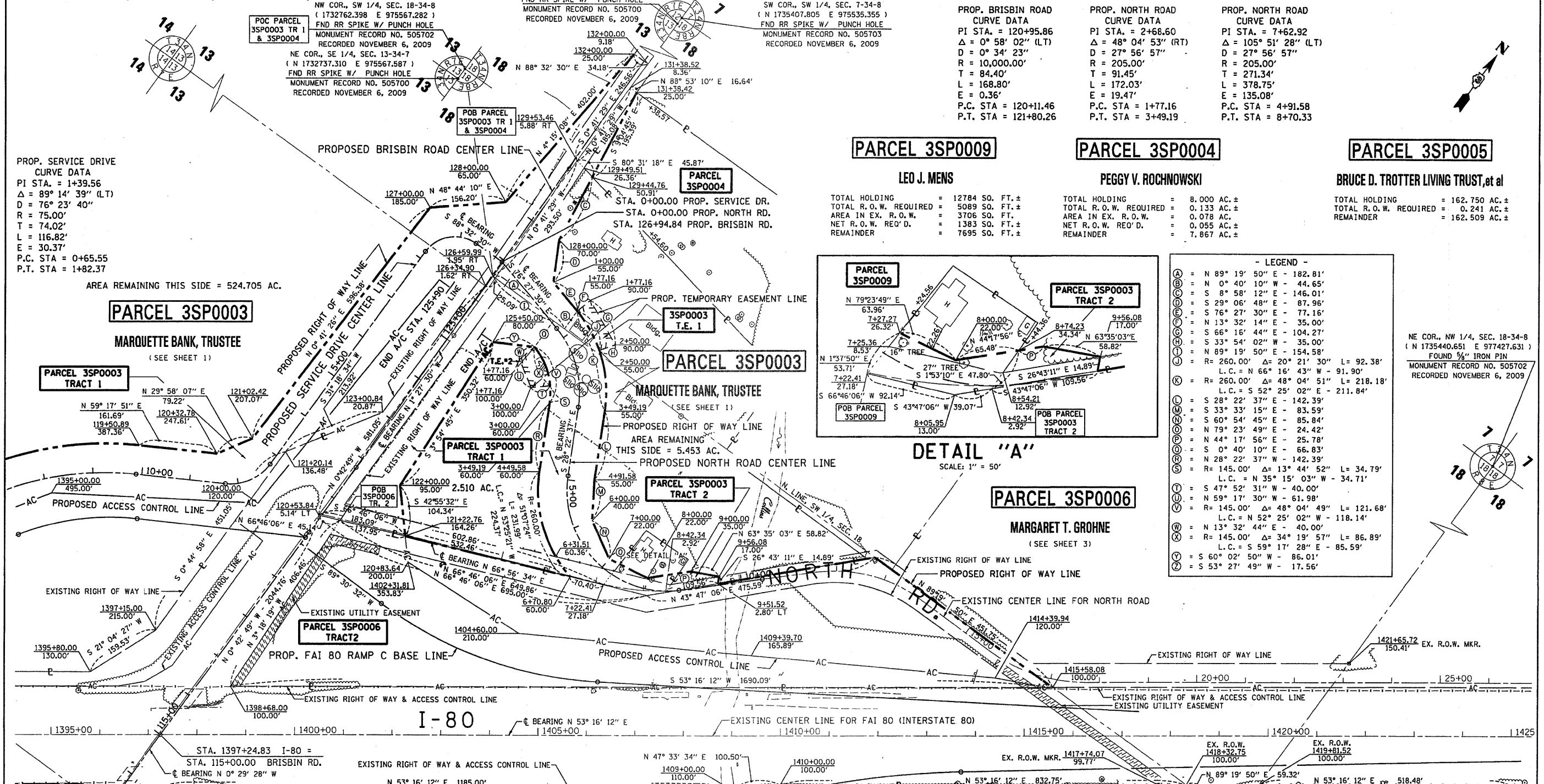


E 1/2, SEC. 13, T. 34 N., R. 7 E. 3RD P.M.

W 1/2, SEC. 18, T. 34 N., R. 8 E. 3RD P.M.



PROP. SERVICE DRIVE
CURVE DATA
PI STA. = 1+39.56
Δ = 89° 14' 39" (LT)
D = 76° 23' 40"
R = 75.00'
T = 74.02'
L = 116.82'
E = 30.37'
P.C. STA = 0+65.55
P.T. STA = 1+82.37

PROP. BRISBIN ROAD
CURVE DATA
PI STA. = 120+95.86
Δ = 0° 58' 02" (LT)
D = 0° 34' 23"
R = 10,000.00'
T = 84.40'
L = 168.80'
E = 0.36'
P.C. STA = 120+11.46
P.T. STA = 121+80.26

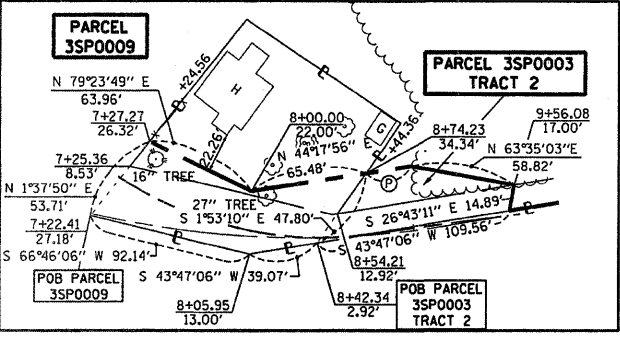
PROP. NORTH ROAD
CURVE DATA
PI STA. = 2+68.60
Δ = 48° 04' 53" (RT)
D = 27° 56' 57"
R = 205.00'
T = 91.45'
L = 172.03'
E = 19.47'
P.C. STA = 1+77.16
P.T. STA = 3+49.19

PROP. NORTH ROAD
CURVE DATA
PI STA. = 7+62.92
Δ = 105° 51' 28" (LT)
D = 27° 56' 57"
R = 205.00'
T = 271.34'
L = 378.75'
E = 135.08'
P.C. STA = 4+91.58
P.T. STA = 8+70.33

PARCEL 3SP0009
LEO J. MENS
TOTAL HOLDING = 12784 SQ. FT. ±
TOTAL R.O.W. REQUIRED = 5089 SQ. FT. ±
AREA IN EX. R.O.W. = 3706 SQ. FT.
NET R.O.W. REQ'D. = 1383 SQ. FT. ±
REMAINDER = 7695 SQ. FT. ±

PARCEL 3SP0004
PEGGY V. ROCHNOWSKI
TOTAL HOLDING = 8,000 AC. ±
TOTAL R.O.W. REQUIRED = 0,133 AC. ±
AREA IN EX. R.O.W. = 0,078 AC. ±
NET R.O.W. REQ'D. = 0,055 AC. ±
REMAINDER = 7,867 AC. ±

PARCEL 3SP0005
BRUCE D. TROTTER LIVING TRUST, et al
TOTAL HOLDING = 162,750 AC. ±
TOTAL R.O.W. REQUIRED = 0,241 AC. ±
REMAINDER = 162,509 AC. ±



- LEGEND —
- (A) = N 89° 19' 50" E - 182.81'
 - (B) = N 0° 40' 10" W - 44.65'
 - (C) = S 8° 58' 12" E - 146.01'
 - (D) = S 29° 06' 48" E - 87.96'
 - (E) = S 76° 27' 30" E - 77.16'
 - (F) = N 13° 32' 14" E - 35.00'
 - (G) = S 66° 16' 44" E - 104.27'
 - (H) = S 33° 54' 02" W - 35.00'
 - (I) = N 89° 19' 50" E - 154.58'
 - (J) = R = 260.00' Δ = 20° 21' 30" L = 92.38'
L.C. = N 66° 16' 43" W - 91.90'
 - (K) = R = 260.00' Δ = 48° 04' 51" L = 218.18'
L.C. = S 52° 25' 02" E - 211.84'
 - (L) = S 28° 22' 37" E - 142.39'
 - (M) = S 33° 33' 15" E - 83.59'
 - (N) = S 60° 54' 45" E - 85.84'
 - (O) = N 79° 23' 49" E - 24.42'
 - (P) = N 44° 17' 56" E - 25.78'
 - (Q) = S 0° 40' 10" E - 66.83'
 - (R) = N 28° 22' 37" W - 142.39'
 - (S) = R = 145.00' Δ = 13° 44' 52" L = 34.79'
L.C. = N 35° 15' 03" W - 34.71'
 - (T) = S 47° 52' 31" W - 40.00'
 - (U) = N 59° 17' 30" W - 61.98'
 - (V) = R = 145.00' Δ = 48° 04' 49" L = 121.68'
L.C. = N 52° 25' 02" W - 118.14'
 - (W) = N 13° 32' 44" E - 40.00'
 - (X) = R = 145.00' Δ = 34° 19' 57" L = 86.89'
L.C. = S 59° 17' 28" E - 85.59'
 - (Y) = S 60° 02' 50" W - 86.01'
 - (Z) = S 53° 27' 49" W - 17.56'

NE COR., NW 1/4, SEC. 18-34-B
(N 1735440.651 E 977427.631)
FOUND 5/8" IRON PIN
MONUMENT RECORD NO. 505702
RECORDED NOVEMBER 6, 2009

SW COR., SW 1/4, SEC. 18-34-B
(N 1730111.704 E 975600.294)
SET SURVEY NAIL
MONUMENT RECORD NO. 505702
RECORDED NOVEMBER 6, 2009

SE COR., SE 1/4, SEC. 13-34-7
(N 1730086.626 E 975600.607)
SET SURVEY NAIL
MONUMENT RECORD NO. 505700
RECORDED NOVEMBER 6, 2009

SURVEYOR'S STATEMENT

I, CURT A. BENDER, HEREBY CERTIFY THAT I AM A PROFESSIONAL LAND SURVEYOR OF THE STATE OF ILLINOIS, THAT THE SURVEY OF FAI 80 (I-80) WAS MADE BY WILLETT, HOFMANN & ASSOCIATES, INC. UNDER MY DIRECTION, AT THE REQUEST OF THE ILLINOIS DEPARTMENT OF TRANSPORTATION, DISTRICT 3, AND THAT THE SURVEY IS TRUE AND COMPLETE AS SHOWN TO THE BEST OF MY KNOWLEDGE AND BELIEF, THAT ALL MONUMENTS AND MARKS ARE OF THE CHARACTER AND OCCUPY THE POSITION SHOWN THEREON, AND ARE SUFFICIENT TO ENABLE THE SURVEY TO BE RETRACED. THIS PROFESSIONAL SERVICE CONFORMS TO THE CURRENT ILLINOIS MINIMUM STANDARDS FOR A BOUNDARY SURVEY.

DATED 17 DECEMBER 2009

Curt A. Bender
BY CURT A. BENDER, ILLINOIS PROFESSIONAL LAND SURVEYOR NO. 3688 (EXPIRES NOVEMBER 2010)
WILLETT, HOFMANN & ASSOCIATES, INC. - DESIGN FIRM NO. 184-000918



FOR THE PURPOSE OF THIS PLAT, BEARINGS AND GRID DISTANCES ARE REFERENCED TO THE ILLINOIS STATE PLANE COORDINATE SYSTEM EAST ZONE DATUM OF 1983 (97).

0 100' 200' 300' 400'

SCALE FACTOR: GRID TO GROUND 1.00002499

PARCEL 3SP0006
MARGARET T. GROHNE
(SEE SHEET 3)
SE COR., SW 1/4, SEC. 18-34-B
(N 1730135.023 E 977480.672)
SET SURVEY NAIL
MONUMENT RECORD NO. 505702
RECORDED NOVEMBER 6, 2009

WILLETT, HOFMANN & ASSOCIATES, INC. CONSULTING ENGINEERS

FILE NAME	USER NAME = #USER#	DESIGNED -	REVISED 12-17-09	STATE OF ILLINOIS DEPARTMENT OF TRANSPORTATION	RIGHT OF WAY PLANS		F.A.I. RTE.	SECTION	COUNTY	TOTAL SHEETS	SHEET NO.
#FILE#		DRAWN -	REVISED -		PROJECT	JOB NO. R-93-002-04	-80-	(32, 47-4) HBK-4	GRUNDY	351	128
PLOT SCALE = #SCALE#		CHECKED -	REVISED -		SHEET NO. 2 OF 3 SHEETS	STA. 114+00.00 TO STA. 132+00.00	CONTRACT NO. 66408				
PLOT DATE = #DATE#		DATE -	REVISED -		SCALE: 1" = 100'		FED. ROAD DIST. NO. ILLINOIS FED. AID PROJECT				