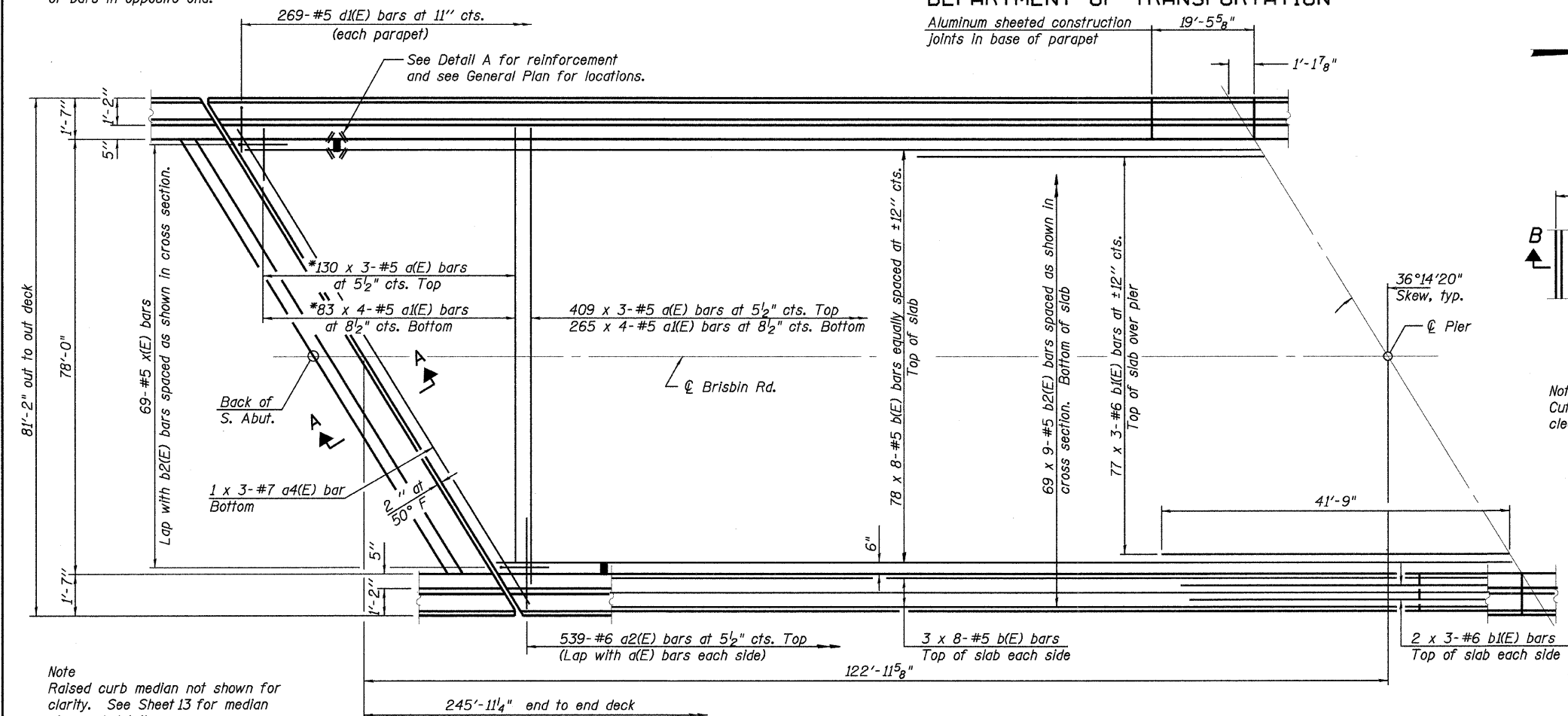


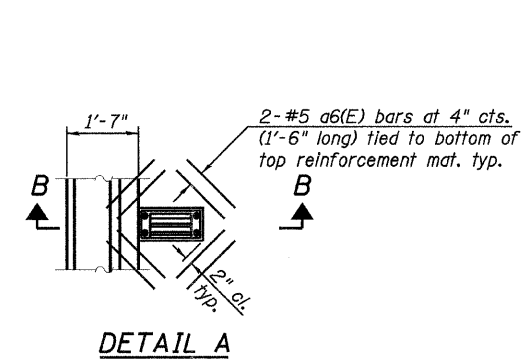
\* Order a(E) & a1(E) bars full length.  
Cut to fit skew and use remainder  
of bars in opposite end.

STATE OF ILLINOIS  
DEPARTMENT OF TRANSPORTATION

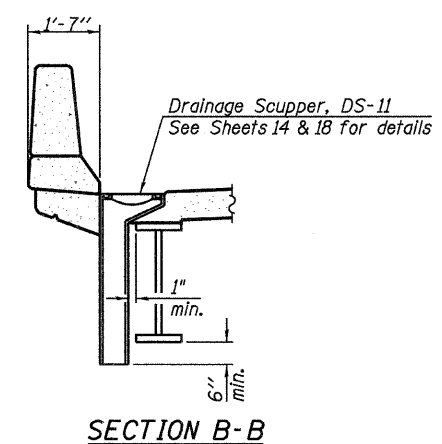
Aluminum sheeted construction  
Joints in base of parapet



PARTIAL PLAN



Note  
Cut longitudinal reinforcement to  
clear drainage scuppers.



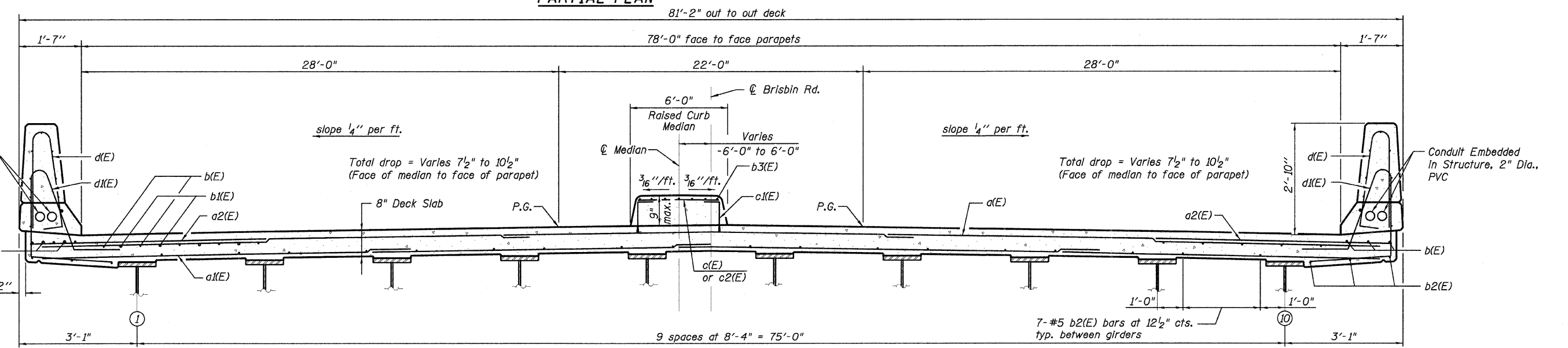
SECTION B-B

MINIMUM BAR LAPS

- #5 bar = 2'-2"
- #6 bar = 2'-7"
- #7 bar = 4'-10" (Top Bar)
- #7 bar = 3'-5" (Bottom Bar)

Notes  
See Sheets 13 & 14 for superstructure details  
and Bill of Material.  
Bars indicated thus 20 x 3-#5 etc. indicates  
20 lines of bars with 3 lengths per line.  
See Sheet 14 for parapet reinforcement.

Note  
Raised curb median not shown for  
clarity. See Sheet 13 for median  
plan and details.



NEAR PIER

CROSS SECTION  
(Looking North)

NEAR MIDSPAN

DECK PLAN & CROSS SECTION  
STRUCTURE NO. 032-0115

DESIGNED - B J N
CHECKED - C M M
DRAWN - G J S
CHECKED - C M M

**LOCHNER**  
H.W. LOCHNER, INC.  
CONSULTING ENGINEERS & PLANNERS  
20 NORTH WACKER DRIVE SUITE 1200  
CHICAGO, IL 60606

SHEET NO. 12 OF 31 SHEETS	RT.E.	SECTION	COUNTY	TOTAL SHEETS	SHEET NO.
	*	(32, 47-4) HKB-4 & (G)N	GRUNDY	351	294
CONTRACT NO. 66408					
FED. ROAD DIST. NO. - ILLINOIS FED. AID PROJECT					
* FAI 80 & FAS 297 / FAU 392					

t:\2608-bris\struct\dgn\0320058-66408-012-DP01.dgn