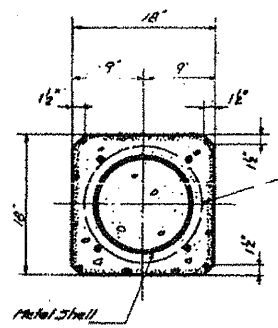
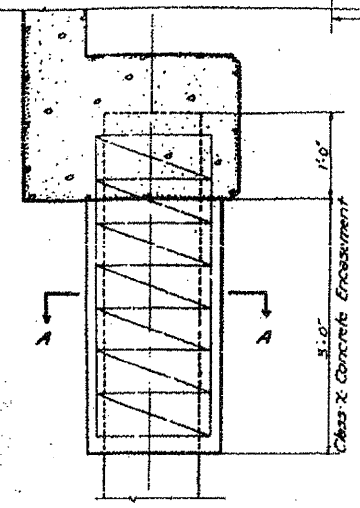
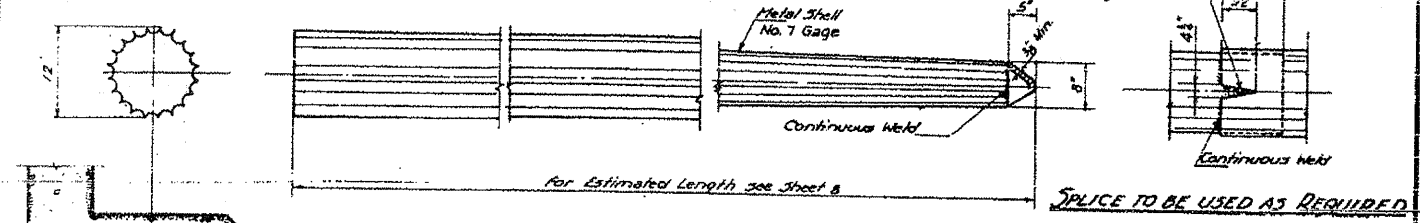
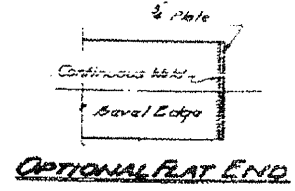
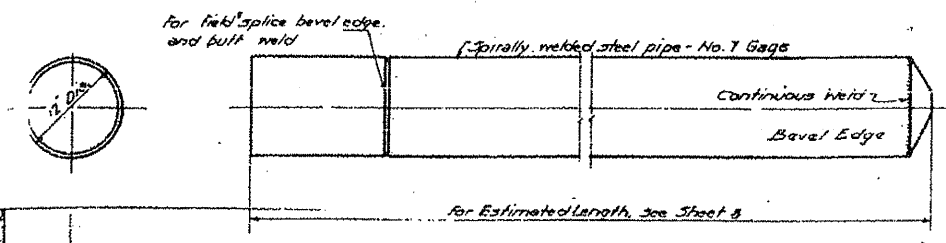


ABUTMENT PILES

PILING TO BE USED AT THE ABUTMENTS SHALL BE ANY OF THE VARIOUS KINDS SHOWN BELOW

SOURCE NO.	SECTION	COUNTY	TOTAL SHEETS	SHEET NO.
E.L.I. 80	(32.47)-4	GRUNDY-KENDALL	262	152
STA.	TO STA.			
220. ROAD DIST. NO. 71	FARMER I.P.A.	PROJECT		

SHEET 11 OF 11

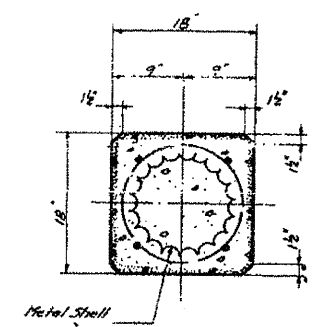
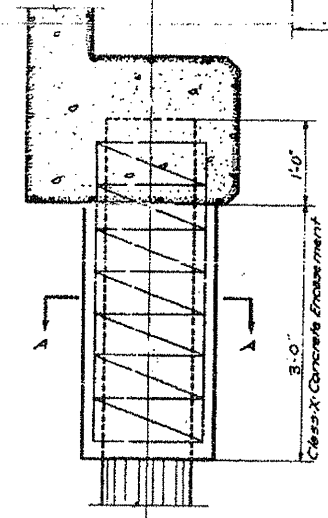


15 Dia. Spiral #2 wire 6" Pitch. 2 extra turns top and bottom. #4 Tie Bars. The cost of Class 'C' concrete Encasement and Reinforcement is incidental to the cost of furnishing Piles.

Note: Drilling and bearing ends of pipe shall be cut square.

SECTION A-A

DETAIL OF SPIRALLY WELDED STEEL SHELL FOR CAST IN PLACE CONCRETE PILES

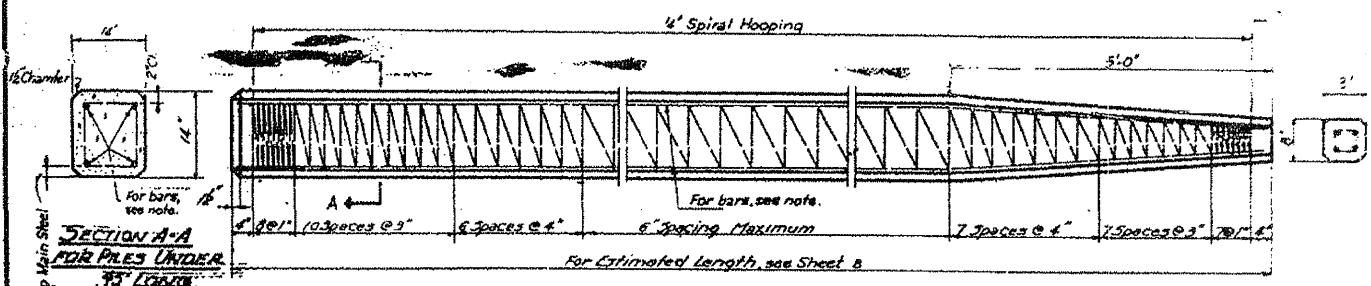


- ALLOWABLE TAPERS**
1. Taper 1/4" for 10 + 12 Cylindrical Section Extension
 2. Taper 1/4" for 17 + 12 Cylindrical Section Extension

15 Dia. Spiral #2 wire 6" Pitch. 2 extra turns top and bottom. #4 Tie Bars. The cost of Class 'C' concrete Encasement and Reinforcement is incidental to the cost of furnishing Piles.

SECTION A-A

DETAIL OF METAL SHELL FOR CAST IN PLACE CONCRETE PILES



SECTION A-A FOR PILES UNDER 45' LONG



SECTION A-A FOR PILES 45 OR MORE

Note: For 14" Piles 45' long or more use #8 bars - 4 for the full length and 4 to the point of bevel. For 14" Piles under 45' long use #4 bars the full length.

Handling: For pile lengths up to 45 ft, use two slings placed at a distance of 0.2L from each end. For piles longer than 45 ft, use three slings placed at a distance of 0.12L from each end and at mid-point of pile. Overall length of pile to be handled.

DETAIL OF PRECAST CONCRETE PILES