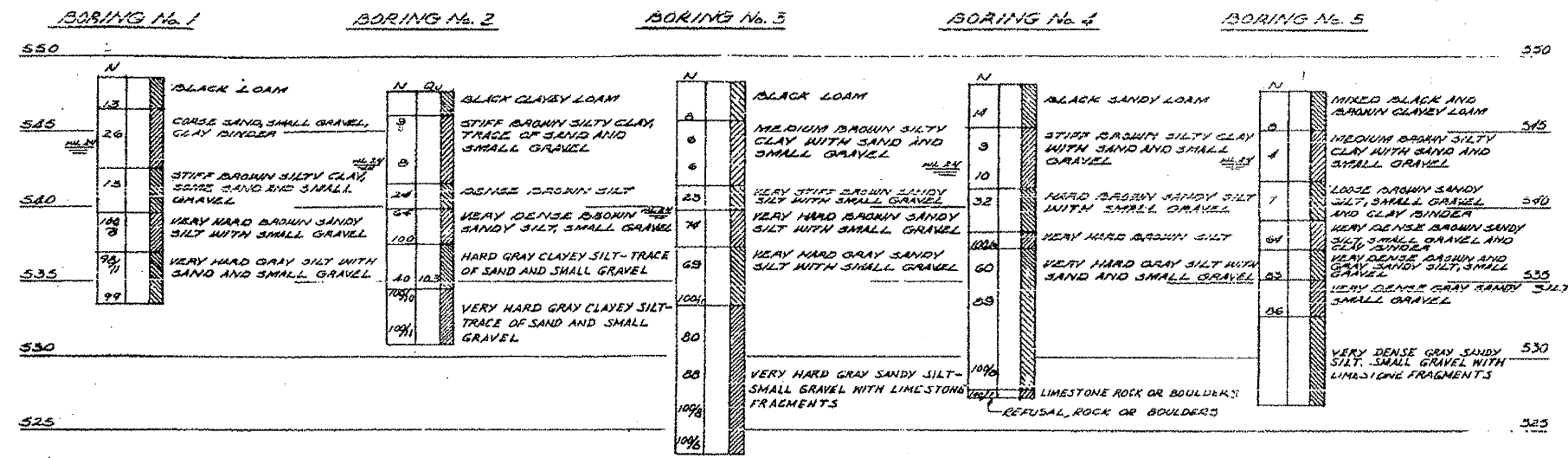


# SOIL TEST BORINGS

PROJECT NO.	SECTION	COUNTY	TOWNSHIP	SHEET NO.
F.A. 180-3247-4	GRUNDY-KENDALL	262	143	
STA.	TO STA.			
1397+24.83	1397+24.83			

SHEET 2 OF 11



## BILL OF MATERIAL - STATION 1397+24.83

ITEM	UNIT	QUANTITY	
		SUPER.	TOTAL
CLASS X CONCRETE, STRUCTURES	CU YDS	230.9	333.1
HANDRAIL CONCRETE	CU YDS	—	2.0
REINFORCEMENT BARS	LBS.	44,500	35,460
FURNISHING AND ERECTING STRUCTURAL STEEL	LBS.	11,900	—
FURNISHING AND ERECTING METAL HANDRAIL	LIN. FT.	518	—
HAIR PLATES	EACH	—	2
FURNISHING AND ERECTING PRECAST PRESTRESSED CONCRETE I-BEAMS, 12IN.	LIN. FT.	1,334	—
TEST PILES (CONCRETE)	EACH	—	2
CLASS A EXCAVATION FOR STRUCTURES	CU YDS	—	467
SLOPE WALL, 4IN.	SQ. YDS.	—	372
DRIVING CONCRETE PILES	LIN. FT.	—	220
FURNISHING CONCRETE PILES	LIN. FT.	—	220
DRIVING TIMBER PILES	LIN. FT.	—	84
FURNISHING CREOSOTED PILES, 20.1' TO 38'	LIN. FT.	—	84

### NOTE:

WATER LEVEL (W.L.) FIGURE INDICATES TIME OF READING (HOURS) AFTER COMPLETION OF BORING. WATER LEVELS INDICATED ARE THOSE OBSERVED WHEN BORINGS WERE MADE, OR AS NOTED. POROSITY OF THE SOIL STRATA, VARIATIONS OF RAINFALL, SITE TOPOGRAPHY, ETC., MAY CAUSE CHANGES IN THESE LEVELS.

FIGURES IN COLUMN MARKED "N" INDICATE NUMBER OF BLOWS REQUIRED TO DRIVE SAMPLING PIPE ONE FOOT USING 140 LB WEIGHT FALLING 30 INCHES.

FIGURES IN COLUMN MARKED "Qu" INDICATE UNCONFINED COMPRESSIVE STRENGTH IN TONS PER SQ. FT.

ESTIMATING SOIL CONDITIONS WHICH MAY BE ENCOUNTERED IN THE WORK, FOR LOCATION OF BORINGS, SEE SHEET 1.

### NOTE:

THESE ITEMS MARKED THUS \* INCLUDE 10.6 CUYDS. CLASS X CONCRETE AND 890 LBS. REINFORCEMENT BARS FOR DRAINAGE TROUGH.

## GENERAL NOTES

CLASS X CONCRETE SHALL BE USED THROUGHOUT EXCEPT FOR CONCRETE IN HANDRAILS AND PRECAST I-BEAMS.

HANDRAIL CONCRETE SHALL BE USED IN HANDRAIL PORTION OF HANDRAILS AS SHOWN. FOR CONCRETE IN PRECAST I-BEAMS SEE SPECIAL SPECIFICATIONS.

ALL CONCRETE SHALL BE CAST IN PLACE EXCEPT FOR THE PRECAST I-BEAMS.

THE CONCRETE FLOOR SLAB FOR EACH SPAN SHALL BE PLACED IN ONE CONTINUOUS OPERATION BETWEEN CONSTRUCTION JOINTS SHOWN AND SHALL BE FINISHED IN ACCORDANCE WITH ARTICLE 5117 OF THE STANDARD SPECIFICATIONS.

ALL STEEL SHALL BE STRUCTURAL STEEL EXCEPT AS OTHERWISE NOTED.

BRONZE EXPANSION PLATES SHALL CONFORM TO A.S.T.M. SPECIFICATION B100, ALLOY 1, AND SHALL HAVE GRAPHITE INSERTS INSTALLED IN THE SLIDING SURFACE AS MANUFACTURED BY MERRIMAN BROS. INC., BOSTON, MASS., OR EQUAL.

ALL STEEL BEARING PLATES, GRAPHITE BRONZE EXPANSION PLATES, LEAD PLATES AND ANCHOR BOLTS SHALL BE FABRICATED AND SET IN ACCORDANCE WITH ARTICLE 5115 OF THE STANDARD SPECIFICATION AND ARE INCLUDED IN QUANTITY OF STRUCTURAL STEEL. ESTIMATED WEIGHT = 5,630 LBS.

STEEL EXPANSION DEVICES AT THE PIER AND ABUTMENTS SHALL BE FABRICATED AND SET IN ACCORDANCE WITH ARTICLE 5115 (G) OF THE STANDARD SPECIFICATIONS AND ARE INCLUDED IN QUANTITY OF STRUCTURAL STEEL. ESTIMATED WEIGHT = 6,270 LBS.

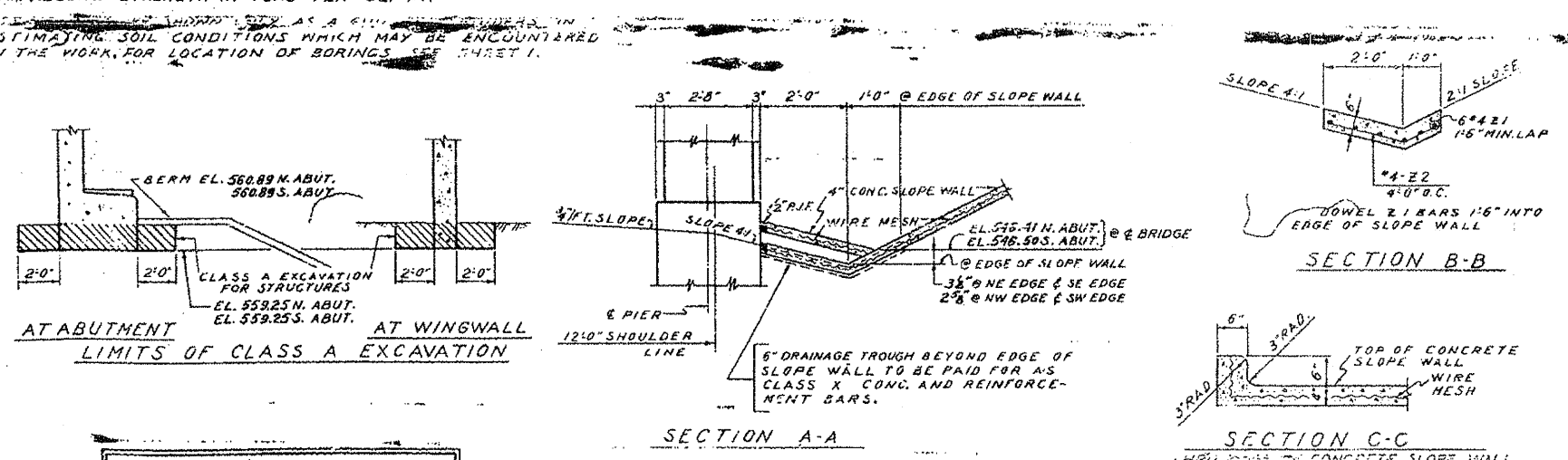
STRUCTURAL STEEL SHALL BE PAINTED ONE SHOP COAT OF RED LEAD PAINT AND TWO FIELD COATS OF ALUMINUM PAINT IN ACCORDANCE WITH SECTION 56 OF THE STANDARD SPECIFICATIONS EXCEPT AS OTHERWISE SPECIFIED ON THE PLANS. ALL PAINT SHALL BE FURNISHED AND APPLIED BY THE CONTRACTOR.

THE CONTRACTOR SHALL DRIVE ONE CONCRETE TEST PILE IN A PERMANENT LOCATION AT EACH ABUTMENT AS DIRECTED BY THE ENGINEER BEFORE ORDERING THE REMAINDER OF THE CONCRETE PILES.

PIER FOOTING TO BE FOUNDED ON THE VERY HARD OR DENSE BROWN SILT STRATA OR UPON A MATERIAL HAVING A SAFE BEARING CAPACITY OF 5,000 LBS. PER SQ. FT.

JOINTS IN DECK SLAB NOTED ON PLANS TO BE FILLED WITH "PARA-PLASTIC OR EQUAL" SHALL BE FILLED WITH JOINT SEALER CONFORMING TO "FEDERAL SPECIFICATION FOR SEALER, HOT POURED TYPE, FOR JOINTS IN CONCRETE" S.S.-158.

SHOP INSPECTION OF STRUCTURAL STEEL AND PRECAST PRESTRESSED I-BEAMS BY ILLINOIS DIVISION OF HIGHWAYS.



STATION 1397+24.83  
 BUILT 195 BY  
 STATE OF ILLINOIS  
 F.A.I.R.T. 80 SEC. (32,47)-4  
 F.A. PROJ. 1-80-4(2)  
 LOADING H15-S12

SEE STATE OF ILLINOIS STD-2113,  
 NAME PLATES EACH 2  
 LETTERING FOR NAME PLATES

### BILL OF MATERIAL - DRAINAGE TROUGHS

ITEM	UNIT	TOTAL
CLASS X CONCRETE	CU YDS	10.6
REINFORCEMENT BARS	LBS.	890

BORINGS, NAME PLATES, GENERAL NOTES,  
 QUANTITIES AND EXCAVATION  
 GRADE SEPARATION  
 CROSS ROAD  
 OVER F.A.I. ROUTE 80  
 F.A. PROJECT  
 F.A.I. ROUTE 80 SECTION (32,47)-4  
 GRUNDY-KENDALL COUNTY  
 STATION 1397+24.83