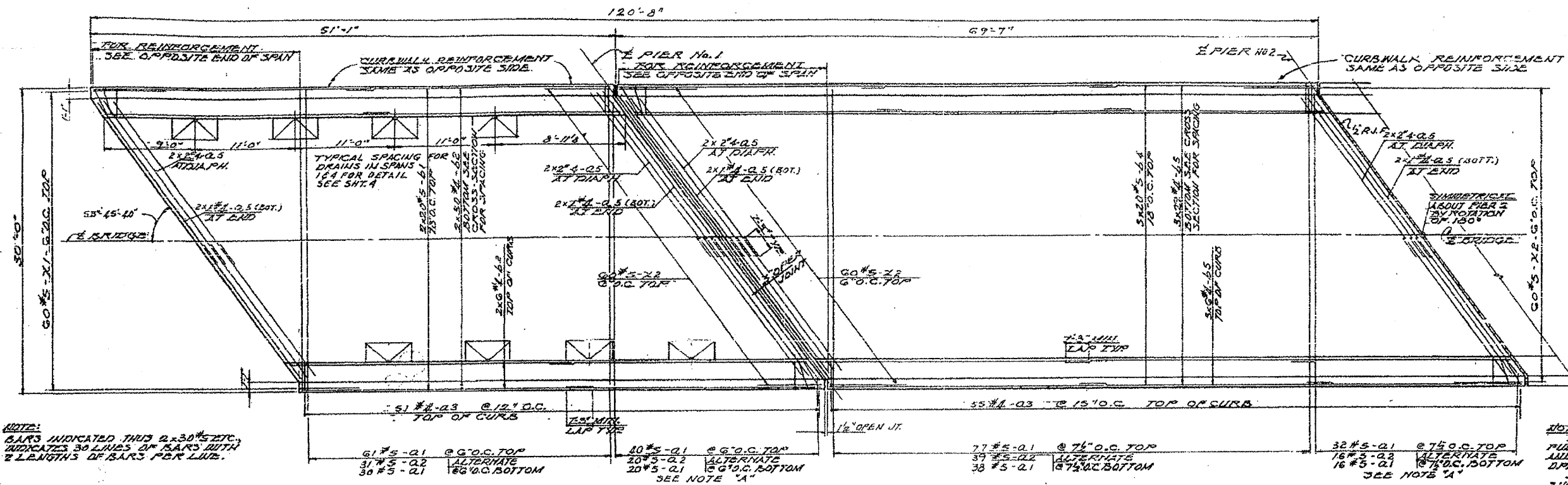


DATE	NO.	BY	TOTAL SHEETS	SHEET NO.
F.A. 80	3247-4	GRUNDY-KENDALL	262	144
STA.		TO STA.		
FOR BRIDGE NO. 71 (RAMP) F.A. PROJECT				

SHEET 3 OF 11

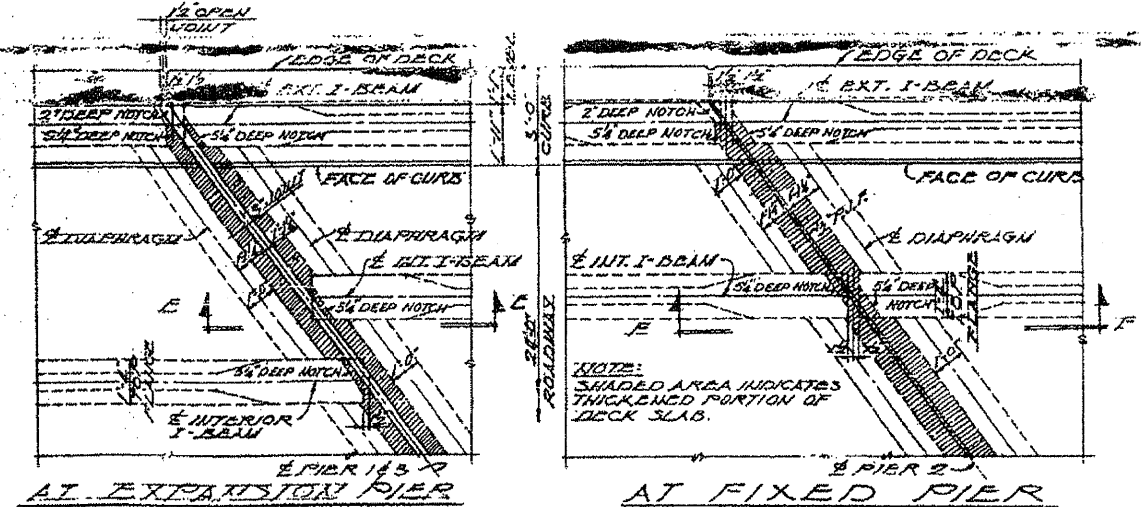


NOTE:
BARS INDICATED THRU 2x30#5 ETC. INDICATES 30 LINES OF BARS WITH 2 LENGTHS OF BARS PER LINE.

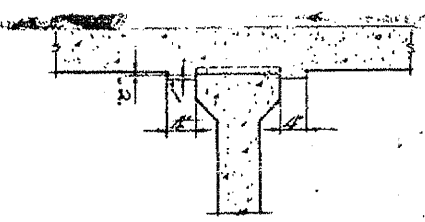
NOTE "A"
ORDER Q1 AND Q2 BARS FULL LENGTH CUT TO FIT SKEW AND USE REMAINDER OF BARS IN OPPOSITE ENDS WHERE INDICATED. SKEW REINFORCEMENT WHERE SHOWN.

HALF PLAN OF DECK REINFORCEMENT

SCALE 3/16" = 1'-0"



PARTIAL PLAN OF DECK AT PIERS
NOTE: ALL BEAMS SHALL HAVE A 5/8" DEEP NOTCH EXCEPT WHERE SHOWN OR NOTED



STANDARD FILLET DETAIL

UPON ALL PRECAST PRESTRESSED SLABS HAVE BEEN ERECTED, ELEV. AT 1' 5" UP THE TOP FLANGES OF THE BEAMS SHALL BE TAKEN AS INTERMEDIATE POINTS TO BE USED TO CHECK DEFLECTIONS. SUBTRACT THE INCREMENT OF DEFLECTIONS FOR THESE POINTS DETERMINED FROM THE DEFLECTION DIAGRAM FROM THE ELEVATIONS SO OBTAINED SUBTRACTED ALGEBRAICALLY FROM THE THEORETICAL GRADE ELEVATIONS MINUS THE THICKNESS OF THE SLAB EQUAL THE DIMENSION "c". A POSITIVE VALUE OF "c" EQUALS THE FILLET HEIGHT ABOVE THE TOP OF THE BEAM. A NEGATIVE VALUE OF "c" EQUALS THE EMBEDMENT OF THE BEAM ABOVE THE THEORETICAL BOTTOM OF SLAB ELEVATION.

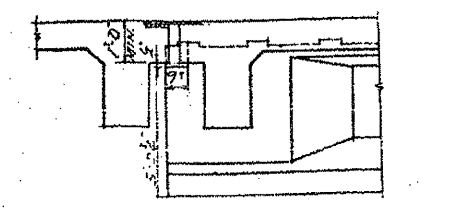
TABLE OF DIMENSIONS

BEAMS	EXTERIOR			1ST INTERIOR			OTHER INTERIOR		
	Y.25	Y.50	Y.75	Y.25	Y.50	Y.75	Y.25	Y.50	Y.75
SPANS 1st	4'	5'6"	4'	7'6"	6'	7'6"	8'	3'6"	8'
SPANS 2nd	7'6"	16'	7'6"	2'	1'6"	2'	2'	1'6"	2'

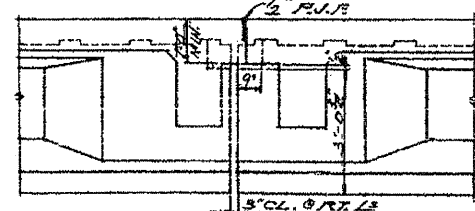
DL DEFLECTION DIAGRAMS
WEIGHT OF PRESTRESSED I-BEAM NOT INCLUDED

BILL OF MATERIALS - SUPERSTRUCTURE

ITEM	UNIT	TOTALS
CLASS X CONCRETE	CU. YDS.	230.8
REINFORCEMENT BARS	LBS.	46,500
METAL HANDRAIL	LIW. FT.	318
STRUCTURAL STEEL	LBS.	11,900
FURNISHING AND ERECTING PRECAST PRESTRESSED CONCRETE I-BEAMS	LIW. FT.	6,334



SECTION "E-E"



SECTION "F-F"

DECK REINFORCEMENT PLAN
GRADE SEPARATION
CROSS ROAD
OVER F.A. ROUTE 80
F.A. PROJECT
F.A. ROUTE 80 SECTION (3247)-4
GRUNDY - KENDALL COUNTY
STATION 1397 + 24.83