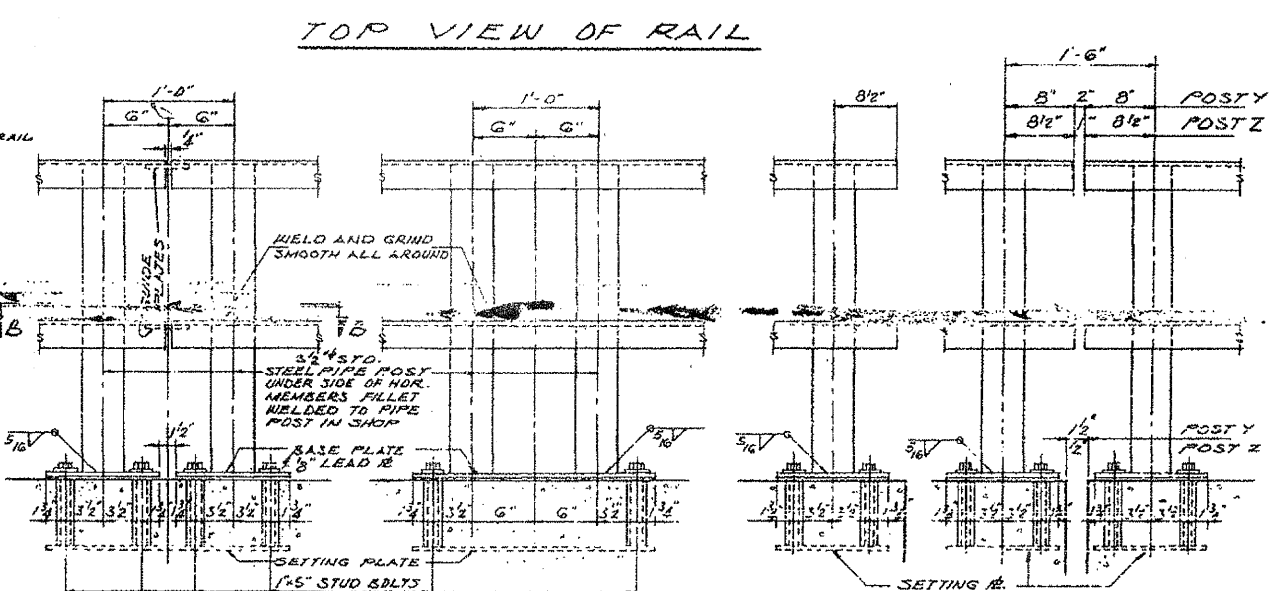
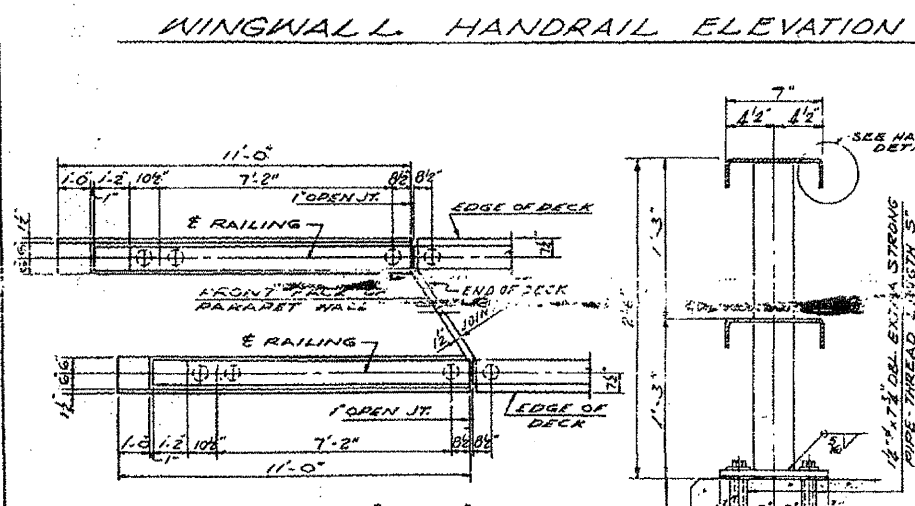
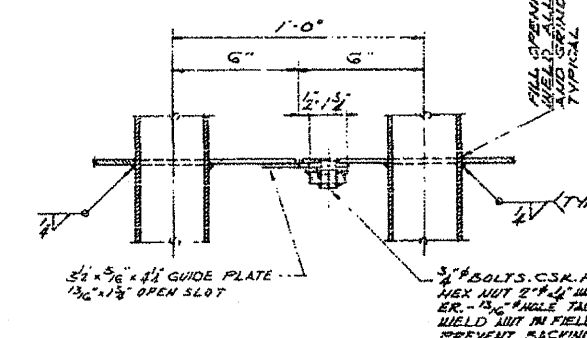
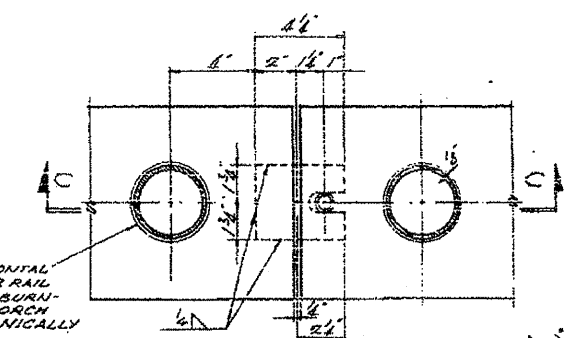
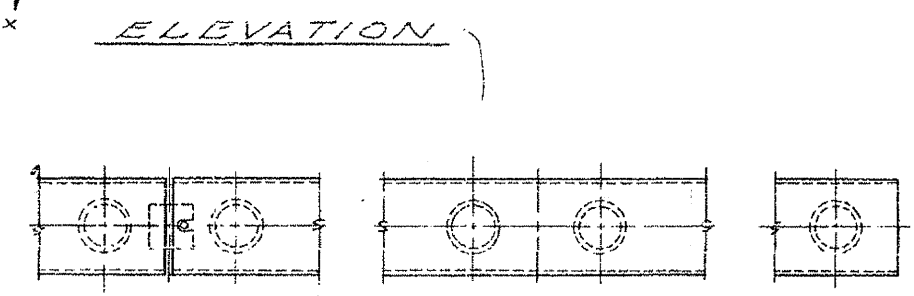
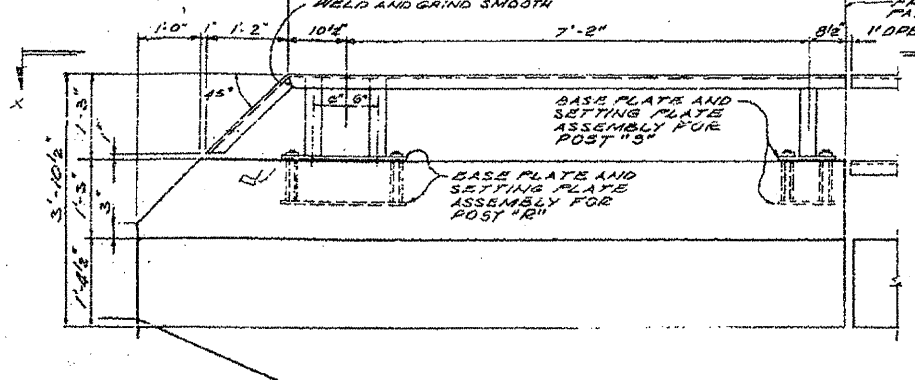
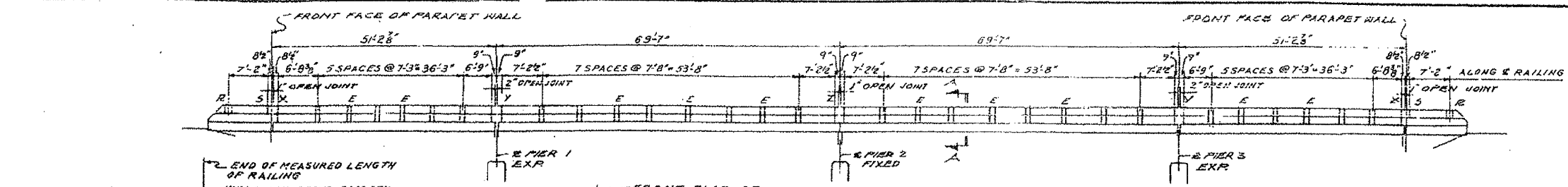


SECTION	COUNTY	SHEET NO.
FA. 1.82 (32,47)-4	GRUNDY	148
STA.	TO STA.	
RD. ROAD DIST. NO. 7	STATION	P.A. PROJECT

SHEET 7 OF 11



NOTES

RAIL SHALL BE FABRICATED AND ERECTED TO CONFORM TO PROFILE OF ROADWAY.

RAIL POSTS SHALL BE TRULY VERTICAL.

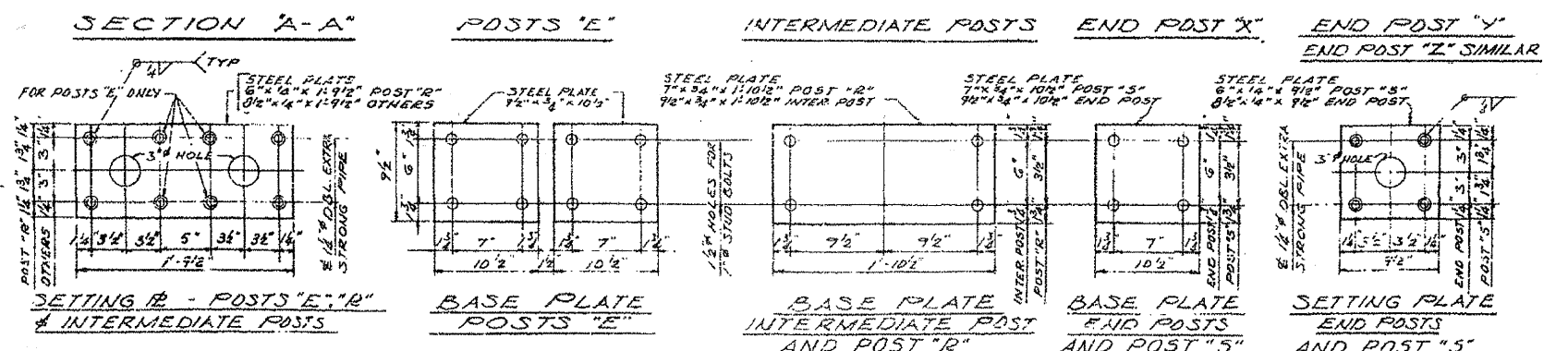
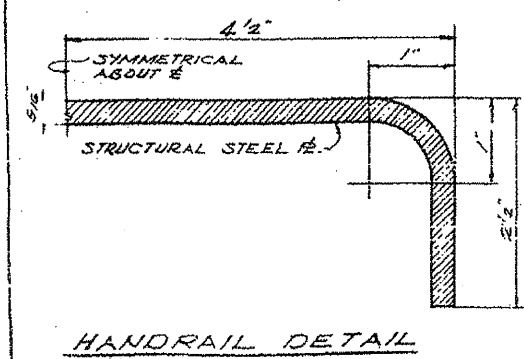
WELDING OF RAIL POST TO HORIZONTAL MEMBERS AND BASE PLATES SHALL BE CONTINUOUS WELDS ALL AROUND.

RAIL POSTS SHALL CONFORM TO THE STANDARD SPECIFICATIONS FOR WELDED AND SEAMLESS STEEL PIPE ASTM A53 WITH MINIMUM YIELD POINT OF 50,000 P.S.I.

HANDRAIL SHALL BE GIVEN ONE SHOP COAT OF RED LEAD AND 2 FIELD COATS OF ALUMINUM PAINT. SEE SPECIFICATIONS.

SHIM PLATES FOR RAIL POSTS: FURNISH SHIMS CONSISTING OF ONE 1/8" SHIM AND TWO 1/16" SHIMS AT 50% OF RAIL POSTS ON SUPERSTRUCTURE AND ALL POSTS ON WINGWALLS FOR VERTICAL ADJUSTMENT OF POSTS.

SIZE OF SHIM PLATES, LEAD PLATES AND SPACING OF HOLES SHALL BE SAME AS FOR BASE PLATES OF POSTS.



HANDRAIL DETAILS
GRADE SEPARATION
CROSS ROAD
OVER FA. ROUTE 80
FA. PROJECT
FA. ROUTE 80 SECTION (32,47)-4
GRUNDY-KENDALL COUNTY
STATION 1397 + 24.83