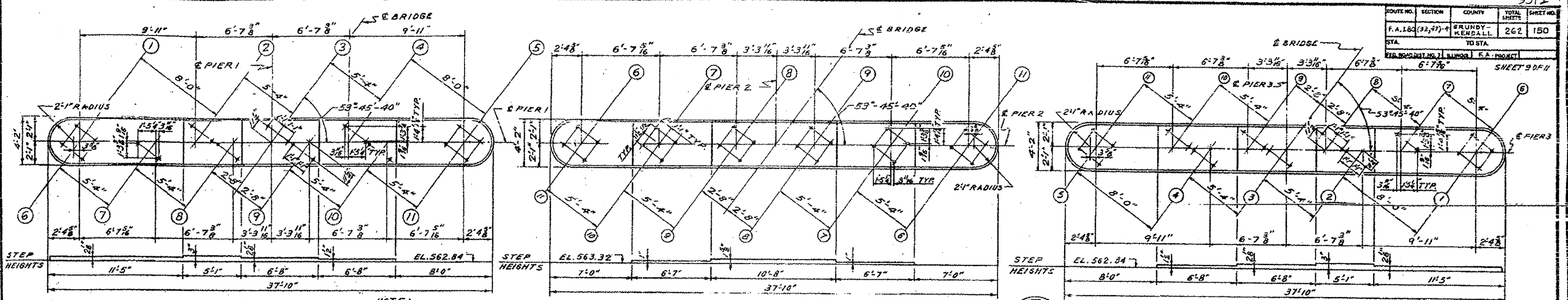


ROUTE NO.	SECTION	COUNTY	TOTAL SHEETS	SHEET NO.
F.A. 182	(32,47)-4	GRUNDY-KENDALL	262	150
STA.	TO STA.			
BRIDGE NO. 7	RUNOFF	F.A. PROJECT		
SHEET 90F-11				

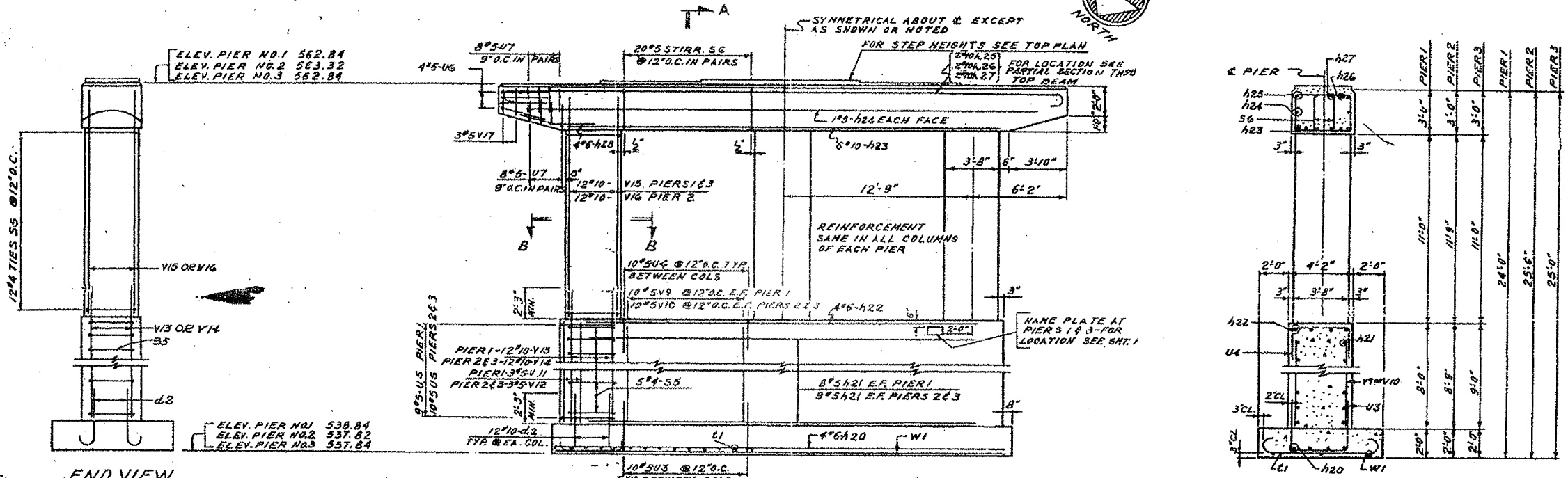


TOP PLAN OF PIER NO. 1

TOP PLAN OF PIER NO. 2

TOP PLAN OF PIER NO. 3

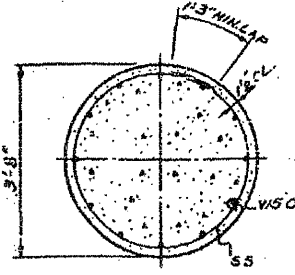
NOTE: PEDESTAL STEPS TO BE REINFORCED NONLITHICALLY WITH TOP BEAM.



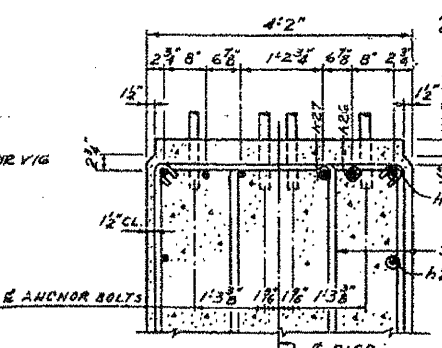
END VIEW

ELEVATION SCALE-1/4\"/>

SECTION A-A

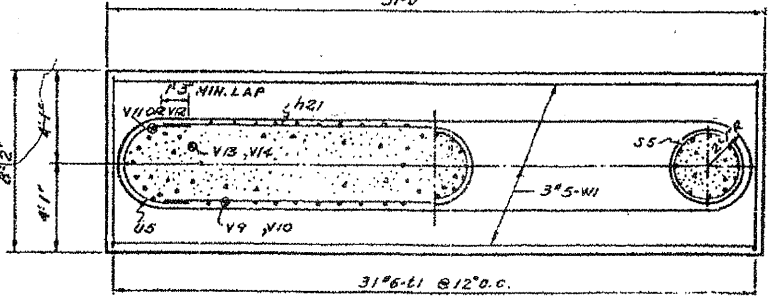


SECTION B-B



PARTIAL SECTION THRU TOP BEAM SCALE-3/4\"/>

NOTE: SPACE REINFORCEMENT TO AVOID INTERFERENCE WITH DRILLING OF HOLES FOR ANCHOR BOLTS



HALF SECTION FOOTING PLAN

BILL OF MATERIALS

ITEM	UNIT	QUANTITY		
		PIER 1	PIER 2	PIER 3
CLASS X CONCRETE	CU. YDS.	87.5	88.3	88.9
REINFORCEMENT BARS	LBS.	9,780	10,120	10,040
CLASS A EXCAVATION FOR STRUCTURES	CU. YDS.	131	146	146

PIERS 1, 2 AND 3  
 GRADE SEPARATION  
 CROSS ROAD  
 OVER F.A.I. ROUTE 80  
 F.A. PROJECT  
 F.A.I. ROUTE 80 SECTION (32,47)-4  
 GRUNDY-KENDALL COUNTY  
 STATION 1397+24.83