

F.A.P. RTE.	SECTION	COUNTY	TOTAL SHEETS	SHEET NO.
623	(H-BR-1)I-1	LASALLE	5	1
FED. ROAD DIST. NO.	ILLINOIS	CONTRACT NO. 66A60		

STATE OF ILLINOIS
DEPARTMENT OF TRANSPORTATION
DIVISION OF HIGHWAYS

**PROPOSED
HIGHWAY PLANS**

FAP ROUTE 623 (US 6)
SECTION (H-BR-1)I-1

LASALLE COUNTY

PPC DECK BEAM SUPPORT
AT S.N. 050-0183 CARRYING FAP ROUTE 623 (US 6)
OVER A CREEK APPROXIMATELY 1.90 MILES WEST
OF IL ROUTE 170 (SENECA)

C-93-160-10

PROJECT LOCATION

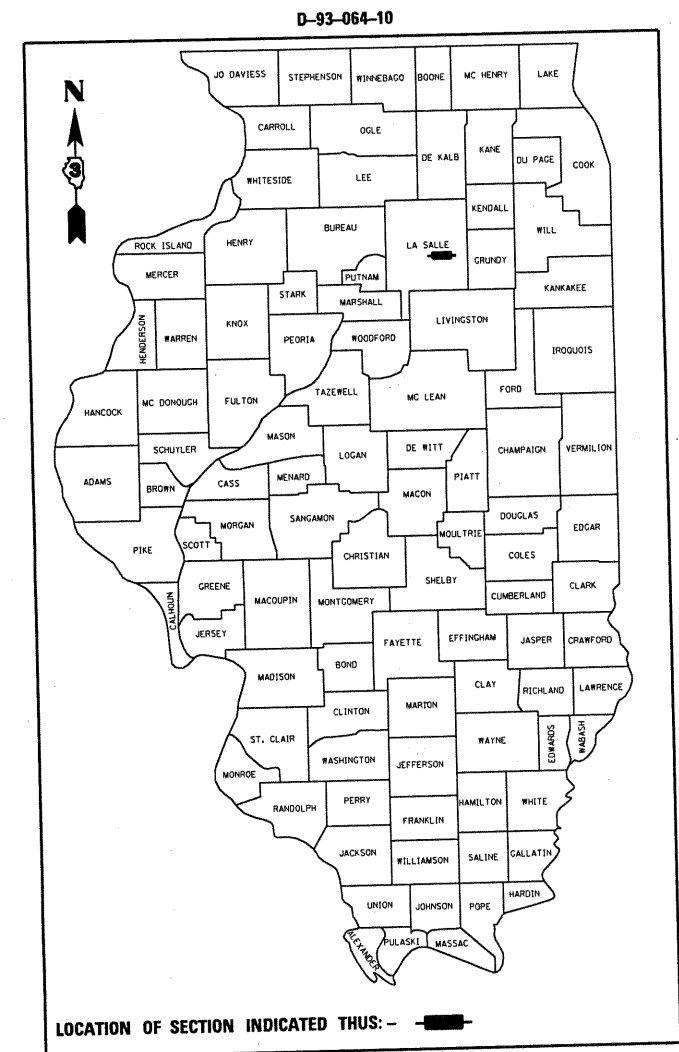
S.N. 050-0183

INDEX OF SHEETS

1. COVER SHEET
2. GENERAL NOTES
3. SUMMARY OF QUANTITIES
4. TYPICAL SECTION
5. GENERAL PLAN, ELEVATION AND REPAIR DETAILS

STANDARDS

- 001006 DECIMAL OF AN INCH AND OF A FOOT
- 701001-02 OFF-ROAD OPERATIONS 2L, 2W, MORE THAN 4.5 m (15') AWAY
- 701006-03 OFF-ROAD OPERATIONS 2L, 2W, 4.5 m (15') TO 600 mm (24") FROM PAVEMENT EDGE
- 701201-03 LANE CLOSURE, 2L, 2W, DAY ONLY, FOR SPEEDS \geq 45 MPH
- 701301-03 LANE CLOSURE, 2L, 2W, SHORT TIME OPERATIONS
- 701901-01 TRAFFIC CONTROL DEVICES



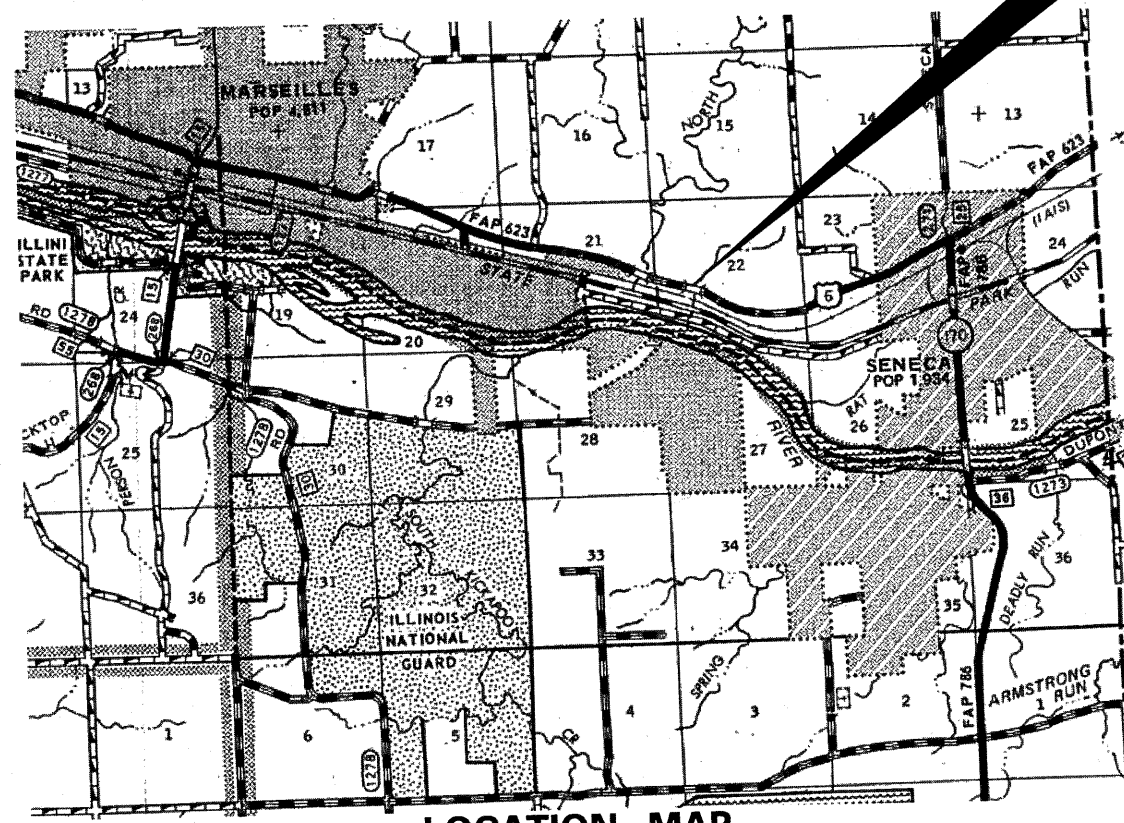
FUNCTIONAL CLASSIFICATION
RURAL - MINOR ARTERIAL
FAP 623 (US 6)
2009 ADT
P.V. 94.0% M.U. 3.0% S.U. 3.0%

STATE OF ILLINOIS
DEPARTMENT OF TRANSPORTATION
DIVISION OF HIGHWAYS

SUBMITTED 6/30 2010
George F. Brown
DEPUTY DIRECTOR OF HIGHWAYS, REGION ENGINEER

Aug 13 2010
Scott E. Still
ACTING ENGINEER OF DESIGN AND ENVIRONMENT

Aug 13 2010
Christine M. Leuder
DIRECTOR OF HIGHWAYS, CHIEF ENGINEER



LOCATION MAP

NOT TO SCALE
POINT LOCATION

MICROFILMED _____
REEL NUMBER _____
AWARDED _____
RESIDENT ENGINEER _____
AS BUILT CHANGES WERE MADE
ON THE FOLLOWING SHEETS _____

J.U.L.I.E.
JOINT UTILITY LOCATION INFORMATION FOR EXCAVATION
1-800-892-0123

PROJECT ENGINEER : JOE KANNEL
UNIT CHIEF : RON WOODSHANK
TOWNSHIP : MANLIUS

CONTRACT NO. 66A60

PRINTED BY THE AUTHORITY
OF THE STATE OF ILLINOIS

GENERAL NOTES

PLAN DIMENSIONS AND DETAILS RELATIVE TO EXISTING PLANS ARE SUBJECT TO ROUTINE VARIATIONS. THE CONTRACTOR SHALL FIELD VERIFY EXISTING DIMENSIONS AND DETAILS AFFECTING NEW CONSTRUCTION AND MAKE NECESSARY APPROVED ADJUSTMENTS PRIOR TO CONSTRUCTION OR ORDERING OF MATERIALS. SUCH VARIATIONS SHALL NOT BE CAUSE FOR ADDITIONAL COMPENSATION FOR A CHANGE IN THE SCOPE OF THE WORK. HOWEVER, THE CONTRACTOR WILL BE PAID FOR THE QUANTITY FURNISHED BASED UPON THE UNIT BID PRICE FOR THE WORK.

FOR STABILIZATION, ALL TYPE III BARRICADES SHALL REQUIRE A MINIMUM OF FOUR SAND BAGS PER BARRICADE.

ANY REFERENCE TO A STANDARD IN THESE PLANS SHALL BE INTERPRETED TO MEAN THE EDITION AS INDICATED BY THE SUBNUMBER LISTED ON THE INDEX OF SHEETS OR THE COPY OF THE STANDARD INCLUDED IN THESE PLANS.

DATE: 6/29/2010

PREPARED BY: *David Bernick*
ACTING DISTRICT STUDIES & PLANS ENGINEER

EXAMINED BY: *[Signature]*
 DISTRICT CONSTRUCTION ENGINEER

[Signature]
 DISTRICT MATERIALS ENGINEER

[Signature]
 DISTRICT OPERATIONS ENGINEER

FILE NAME = c:\pwwork\pwwork\woodshankr1\d0189939\66A60-deta1.s.dgn	USER NAME = woodshankr1	DESIGNED - RON WOODSHANK	REVISED - ---	STATE OF ILLINOIS DEPARTMENT OF TRANSPORTATION	GENERAL NOTES	F.A.P. RTE. 623	SECTION (H-BR-1)1-1	COUNTY LASALLE	TOTAL SHEETS 5	SHEET NO. 2
	PLOT SCALE = 100.2391' / IN.	CHECKED - ---	REVISED - ---			FED. ROAD DIST. NO. - ILLINOIS				
PLOT DATE = Jun 18, 2010 - 12:59:35 PM	DATE - ---	REVISED - ---	SCALE: -----		SHEET NO. 1 OF 1 SHEETS	STA. ----- TO STA. -----	CONTRACT NO. 66A60			

SUMMARY OF QUANTITIES

CONSTRUCTION CODE TYPE: SFTY-2A

RURAL
100% STATE
TOTAL
QUANTITY

CODE NO.	ITEM	UNIT	TOTAL QUANTITY
50500405	FURNISHING AND ERECTING STRUCTURAL STEEL	POUND	8540
67100100	MOBILIZATION	L SUM	1
70100450	TRAFFIC CONTROL AND PROTECTION, STANDARD 701201	L SUM	1

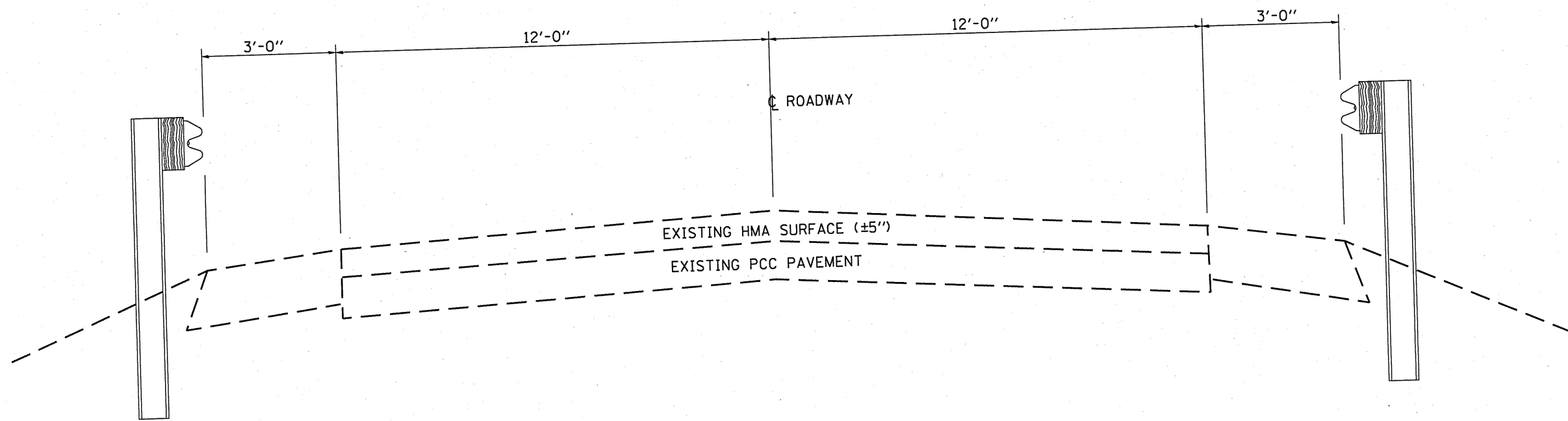
FILE NAME =	USER NAME = woodshankr1	DESIGNED - RON WOODSHANK	REVISED - ---
et\pw\work\p\pidot\woodshankr1\d0189939\6660-detail.dgn		DRAWN - RON WOODSHANK	REVISED - ---
		CHECKED - ---	REVISED - ---
		DATE - ---	REVISED - ---

**STATE OF ILLINOIS
DEPARTMENT OF TRANSPORTATION**

SUMMARY OF QUANTITIES

SCALE: _____ SHEET NO. 1 OF 1 SHEETS STA. _____ TO STA. _____

F.A.P. RTE.	SECTION	COUNTY	TOTAL SHEETS	SHEET NO.
623	(H-BR-1)I-1	LASALLE	5	3
FED. ROAD DIST. NO. - [ILLINOIS]			CONTRACT NO. 66A60	



FILE NAME =	USER NAME = woodshank-1	DESIGNED - RON WOODSHANK	REVISED - ---
cs\pw_work\pwidot\woodshank-1\d0189939\8668-details.dgn		DRAWN - RON WOODSHANK	REVISED - ---
	PLOT SCALE = 100.2391' / IN.	CHECKED - ---	REVISED - ---
	PLOT DATE = Jun 10, 2010 - 12:59:49 PM	DATE - ---	REVISED - ---

**STATE OF ILLINOIS
DEPARTMENT OF TRANSPORTATION**

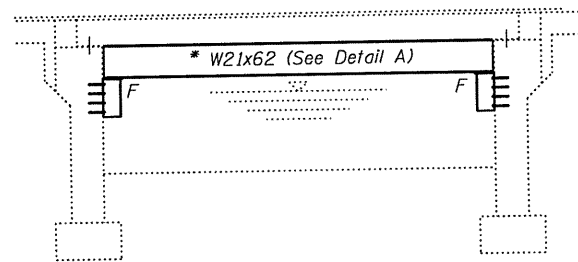
TYPICAL SECTION

SCALE: _____ SHEET NO. 1 OF 1 SHEETS STA. _____ TO STA. _____

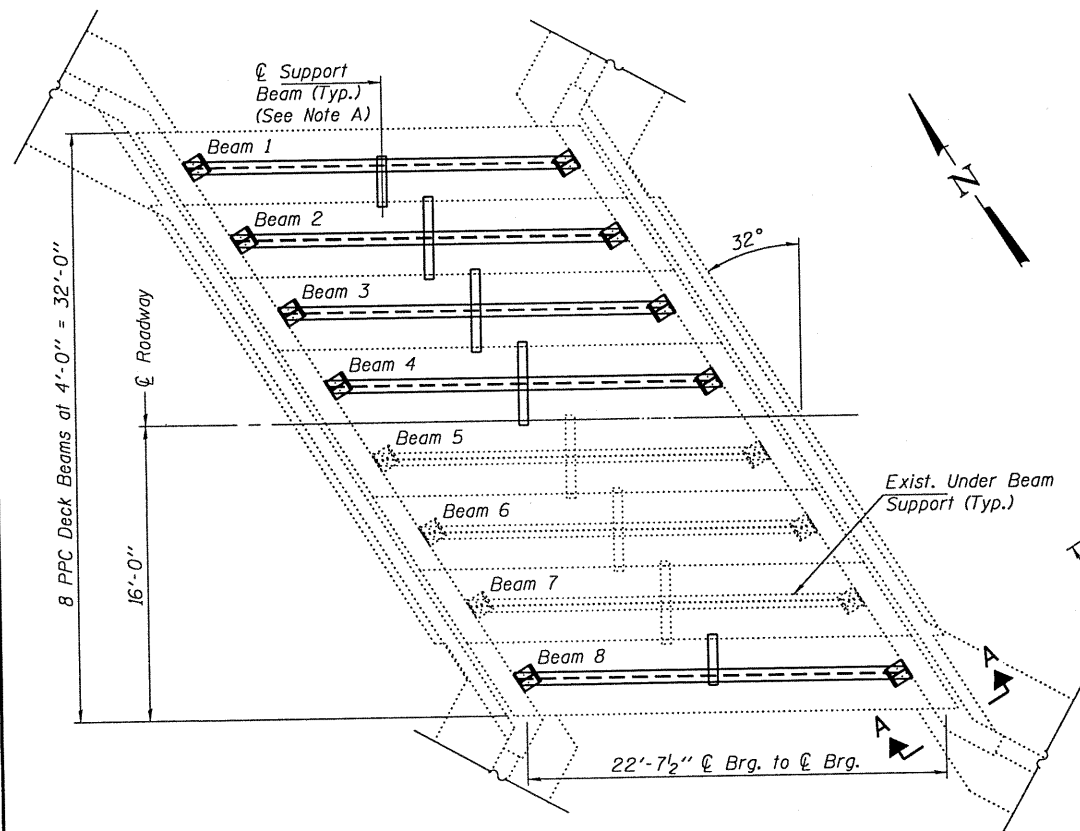
F.A.P. RTE.	SECTION	COUNTY	TOTAL SHEETS	SHEET NO.
623	(H-BR-1)1-1	LASALLE	5	4
FED. ROAD DIST. NO. ILLINOIS			CONTRACT NO. 66A60	

* Contractor is to verify beam length prior to ordering material. Other sections meeting the section modulus requirements shown may be allowed subject to approval by the Bureau of Bridges and Structures, however, no additional payment will be allowed if the contractor chooses a heavier steel section than the one specified in the plans. Maximum girder depth = 24", Min. Sx = 127 in³.

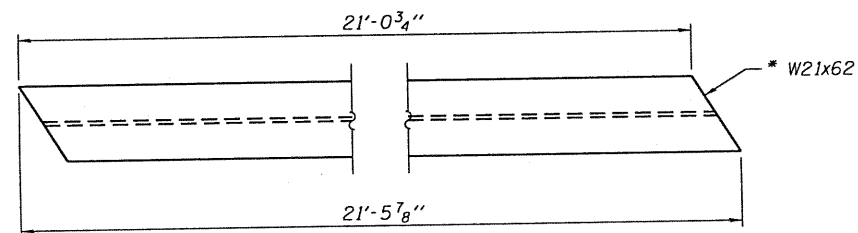
Note A:
Transverse tie \bar{P} 's (1 per span). Place additional shims at midpoints between tie \bar{P} 's. Securely weld shims to top flange of support beam. Minimum shim size is 6" x flange width.



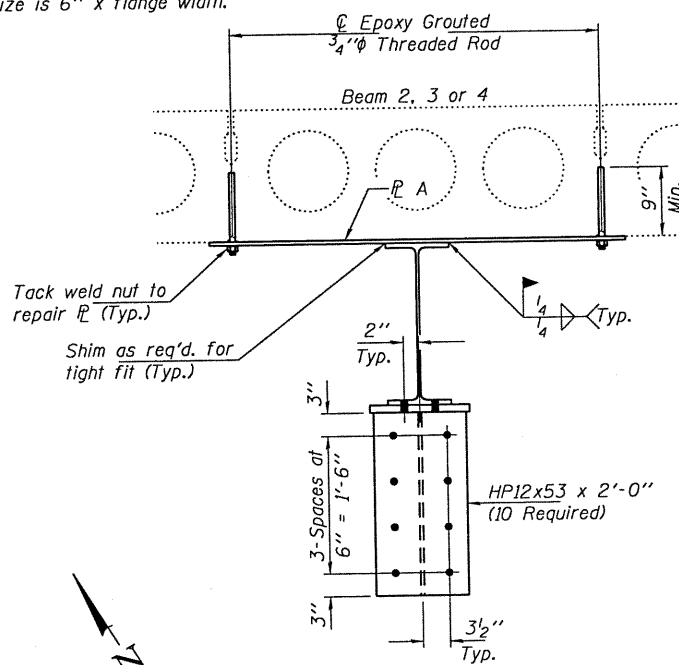
ELEVATION



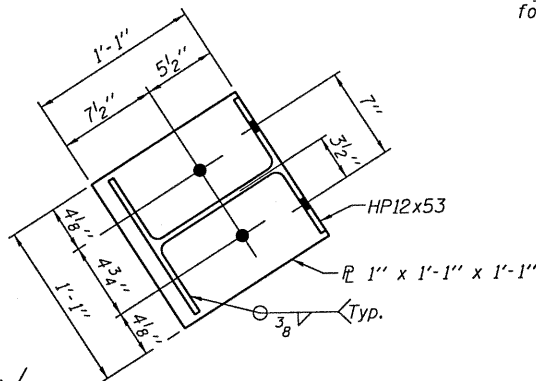
PLAN



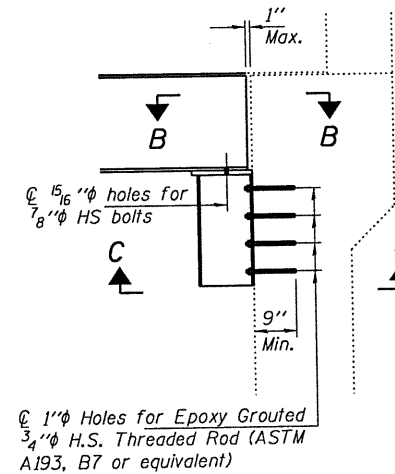
DETAIL A
W21x62 x 21'-5 7/8"
(5 Required)



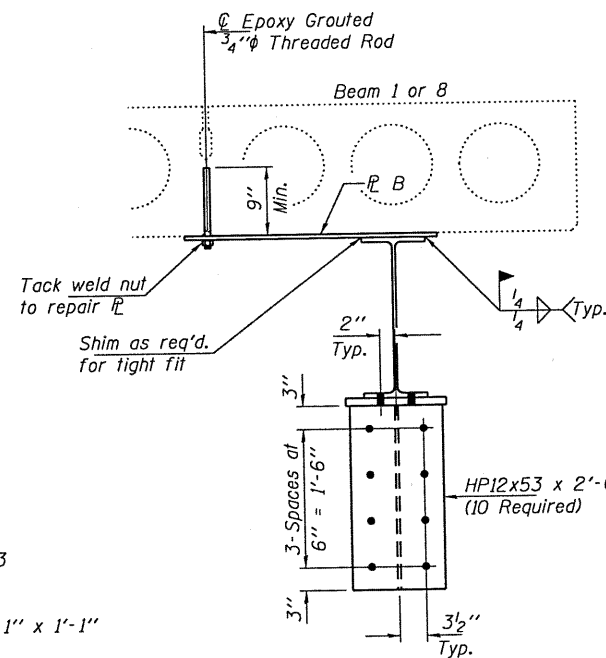
TYPICAL SECTION THRU BEAMS 2 THRU 4



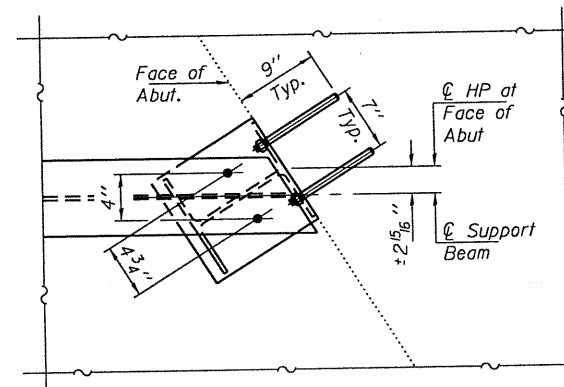
SECTION C-C



SECTION A-A



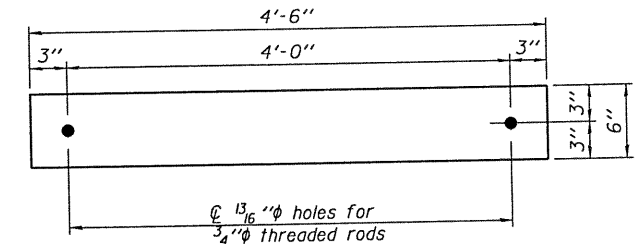
TYPICAL SECTION THRU FASCIA BEAMS 1 & 8



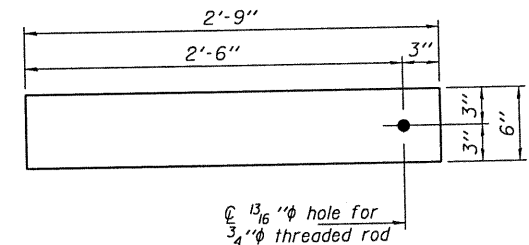
SECTION B-B

GENERAL NOTES

All structural steel shall conform to AASHTO Classification M-270 Gr. 36, unless otherwise noted.
Plan dimensions and details relative to existing plans are subject to nominal construction variations. The Contractor shall field verify existing dimensions and details affecting new construction and make necessary approved adjustments prior to construction or ordering of materials. Such variations shall not be cause for additional compensation for a change in scope of the work, however, the Contractor will be paid for the quantity actually furnished at the unit price bid for the work.
See Section 584 of the Standard Specifications for Epoxy Grouting of Threaded Rods.
The cost of epoxy grouting threaded rods shall be included with Furnishing and Erecting Structural Steel.
The Contractor has the option of using used steel. See special provisions.
The contractor is advised that the existing PPC Deck Beams are in a deteriorated condition with reduced load carrying capacity. It is the contractor's responsibility to account for the condition of the beams when developing construction procedures.
If the contractor's procedure for placement of beams involves placement of cranes or other heavy equipment on the bridge, a detailed procedure shall be submitted to the Engineer for approval. The procedure shall include calculations, prepared and sealed by an Illinois Licensed Structural Engineer, verifying that the equipment and procedure used will not overstress the existing beams. To distribute load to multiple beams and protect the existing surface, in all cases a double layer mat of heavy timbers shall be used at all times under crane tracks or wheels and any outriggers in the down position. If necessary, shims shall be used under the crane mat to ensure uniform contact with the underlying beams.



TRANSVERSE TIE \bar{P} A
 \bar{P} 1/2" x 4'-6" x 6" (3 Req'd)



TRANSVERSE TIE \bar{P} B
 \bar{P} 1/2" x 2'-9" x 6" (2 Req'd)

TOTAL BILL OF MATERIAL

ITEM	UNIT	QUANTITY
Furnishing and Erecting Structural Steel	Pound	8540



Expires: November 30, 2010

DESIGNED: *[Signature]*
CHECKED: *[Signature]*
DRAWN: Kyle M. Steffen
CHECKED: *[Signature]*

EXAMINED: *[Signature]*
PASSED: *[Signature]*

DATE - JULY 19, 2010

STATE OF ILLINOIS
DEPARTMENT OF TRANSPORTATION

GENERAL PLAN, ELEVATION & REPAIR DETAILS

SHEET NO. 1 OF 1 SHEETS

F.A.P. RTE.	SECTION	COUNTY	TOTAL SHEETS	SHEET NO.
623	(H-BR-1)1	LaSALLE	5	5
CONTRACT NO. 66A60				

U.S. ROUTE 6
SN 050-0183