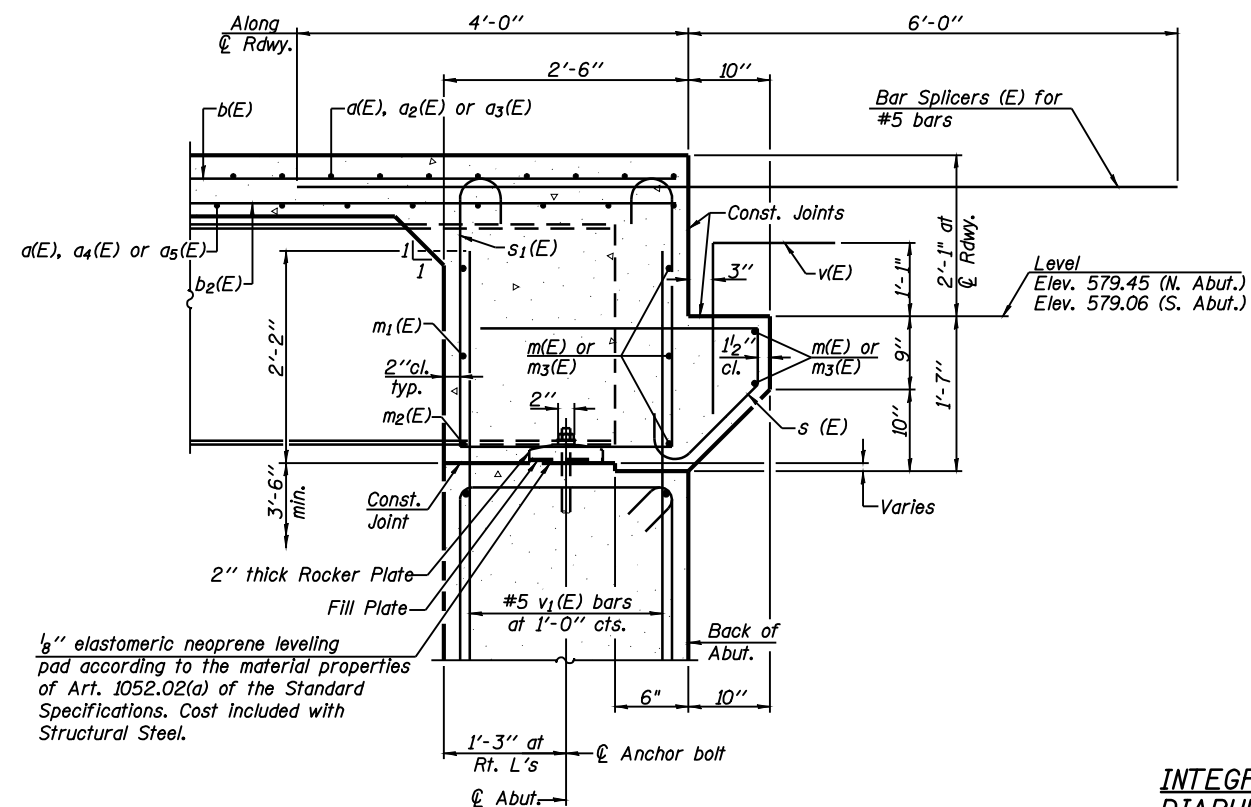


DIAPHRAGM ELEVATION AT ABUTMENT
 (Looking South at South Abutment)
 (North abutment similar)

Notes:
 Reinforcement bars in diaphragm are billed with superstructure on sheet 12 of 30.
 Concrete in diaphragm is included with Concrete Superstructure on sheet 12 of 30.
 For details of bars $s(E)$ & $s_1(E)$ see sheet 12 of 30.
 The $s(E)$ and $s_1(E)$ bars shall be placed parallel to the beams. Spacing for these bars shall be at right angles to the beams.
 Bars indicated thus 2x2-#6 etc. indicates 2 lines of bars with 2 lengths per line
 See sheet 26 of 30 for bar splicer details.

MIN. BAR LAP
 #6 bar = 3'-4"



SECTION A-A

Dimensions at right angles to abutment, except as shown.

**INTEGRAL ABUTMENT
 DIAPHRAGM DETAILS**
 S.N. 084-0521



Allen Henderson & Associates, Inc.
 Civil and Structural Engineers Springfield, IL
 62703 Phone: (217)544-8033 IL Design Firm
 No. 184-001907

SHEET NO. 13
 30 SHEETS

F.A.P. RTE.	SECTION	COUNTY	TOTAL SHEETS	SHEET NO.
662	H(RS-10,B-2)	SANGAMON	84	57
CONTRACT NO. 72A73				
FED. ROAD DIST. NO.		ILLINOIS FED. AID PROJECT		