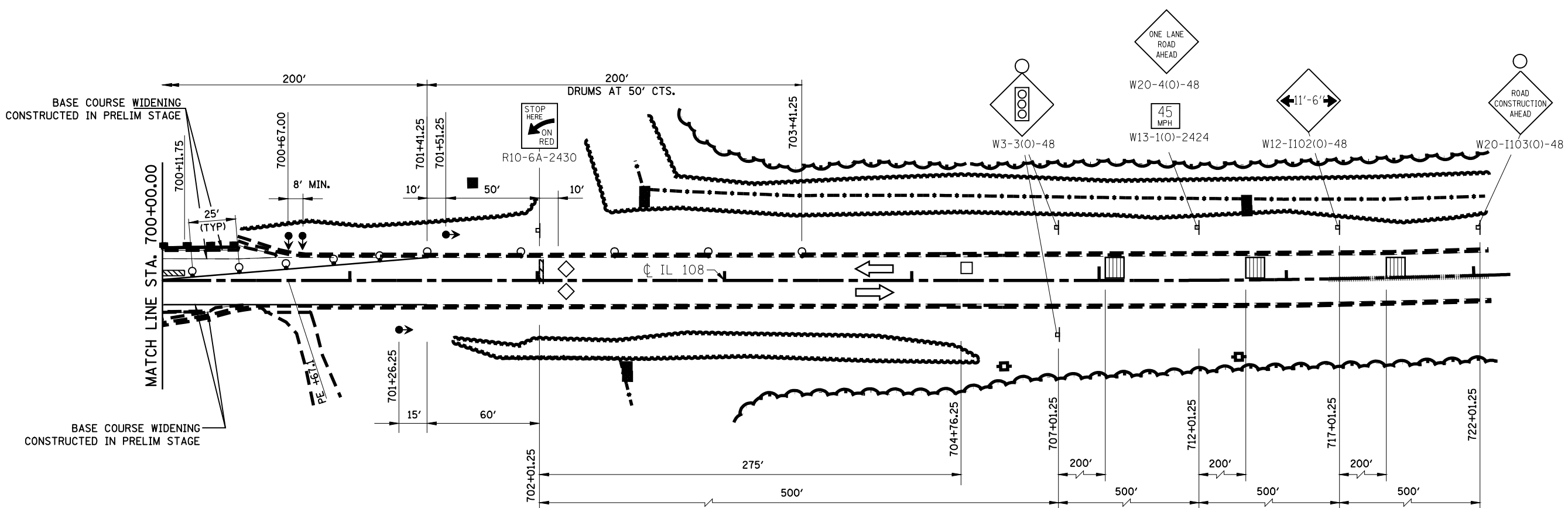


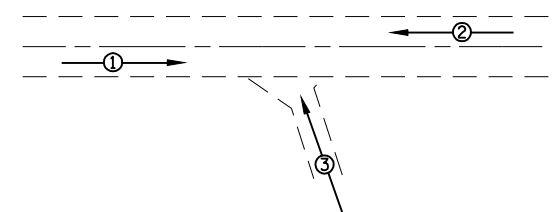
NOTE
TRAFFIC CONTROL AND PROTECTION IN
ACCORDANCE WITH STANDARD 701321



LEGEND

- BRIDGE CONSTRUCTION, STAGE I
- IMPACT ATTENUATOR, NARROW
- TEMPORARY BARRIER WALL
- HOT-MIX ASPHALT BINDER COURSE RAMP
- BASE COURSE WIDENING, 10"
- SIGN
- INDUCTION LOOP DETECTOR
- TEMPORARY BRIDGE TRAFFIC SIGNALS
- DRUM WITH STEADY BURNING LIGHT
- 24" STOP BAR
- TYPE III BARRICADES
- TYPE C BIDIRECTIONAL REFLECTOR
- STEADY BURNING LIGHTS AND DOUBLE VERTICAL PANELS
- TEMPORARY RUMBLE STRIP

NOTE
TRAFFIC CONTROL AND PROTECTION IN
ACCORDANCE WITH STANDARD 701321



TEMPORARY PHASE DESIGNATION DIAGRAM
NOTE: OVERLAP A = 2 + 3

FILE NAME =	USER NAME = laughlinr1	DESIGNED -	REVISED -
et:\pwork\pwork\LAUGHLINRL\0212999\672A94-Sht-Staging\ph2.dgn		DRAWN -	REVISED -
	PLOT SCALE = 60.0000' / IN.	CHECKED -	REVISED -
	PLOT DATE = Jun-28-2010 02:00:51PM	DATE -	REVISED -

**STATE OF ILLINOIS
DEPARTMENT OF TRANSPORTATION**

MAINTENANCE OF TRAFFIC - STAGE I

SCALE: SHEET NO. OF SHEETS STA. TO STA.

F.A.P. RTE.	SECTION	COUNTY	TOTAL SHEETS	SHEET NO.
761	107B-2	MACOUPIN	98	18
FED. ROAD DIST. NO. ILLINOIS FED. AID PROJECT			CONTRACT NO. 72A94	