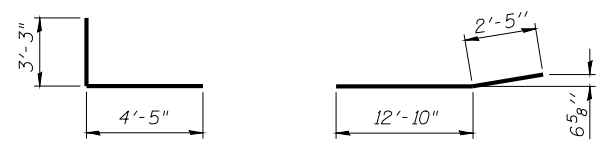
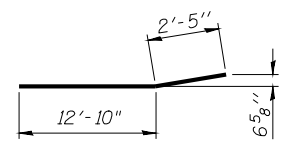


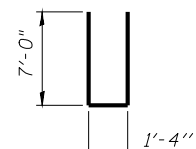
STATE OF ILLINOIS  
DEPARTMENT OF TRANSPORTATION



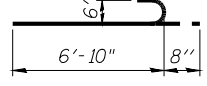
BAR h4(E)



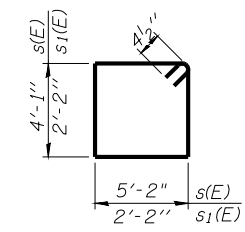
BAR h8(E)



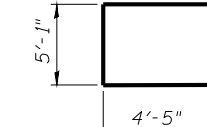
BAR n(E)



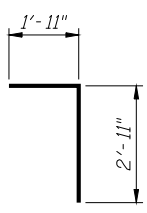
BAR n1(E)



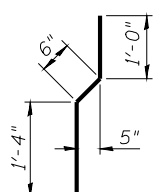
BARS s(E) & s1(E)



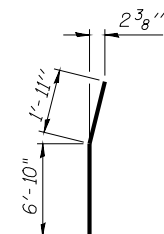
BAR u(E)



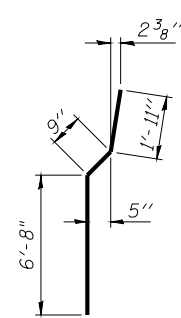
BAR v(E)



BAR v1(E)



BAR v10(E)



BAR v11(E)

**PILE DATA**

Type: Steel HP12x53  
Nominal Required Bearing: 294 kips  
Factored Resistance Available: 147 kips  
Est. Length: 40'  
No. Req'd: 16  
Test Pile: 1

**HOMER L. CHASTAIN & ASSOCIATES, LLP**  
CONSULTING ENGINEERS

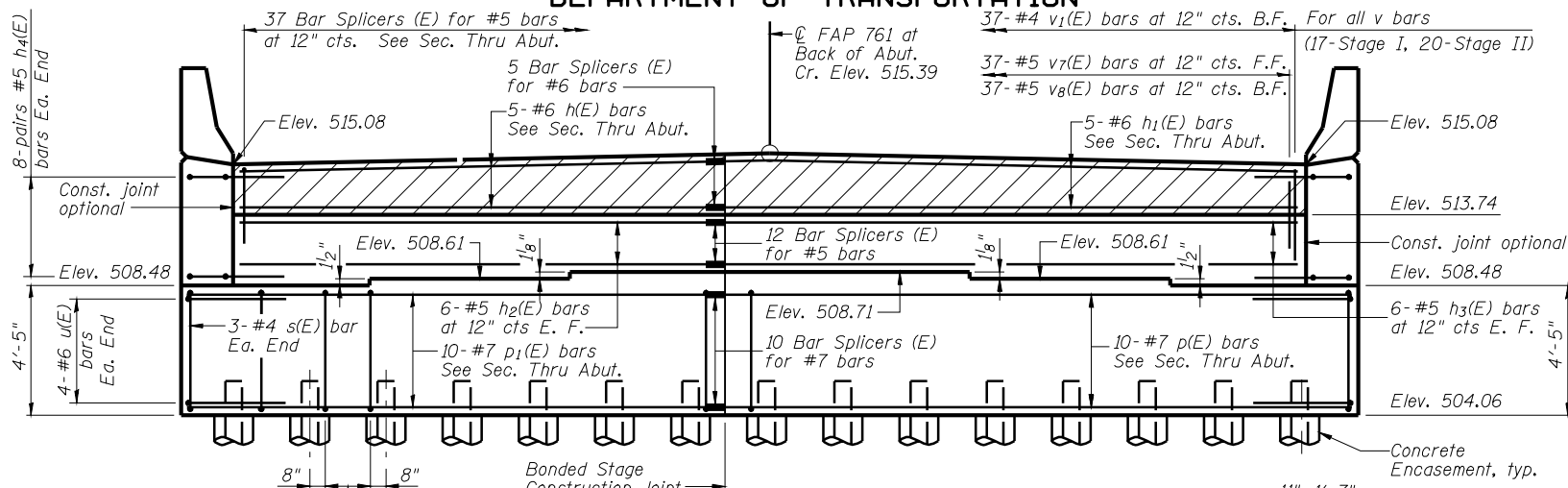
DECATUR (217) 422-8544  
CHICAGO (773) 714-0050  
ROCKFORD (815) 489-0050

184-001397

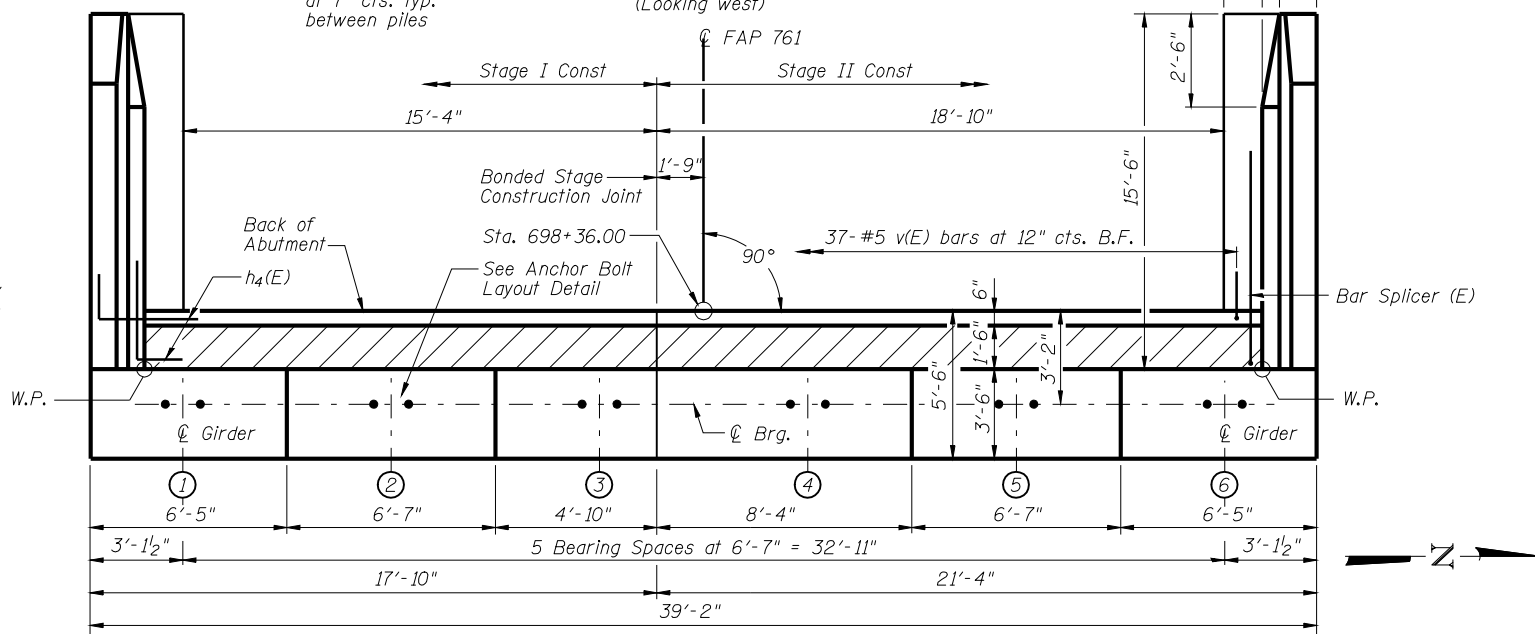
DESIGNED	J.M.B.
CHECKED	T.E.S.
DRAWN	R KING
CHECKED	J.M.B.

A-1

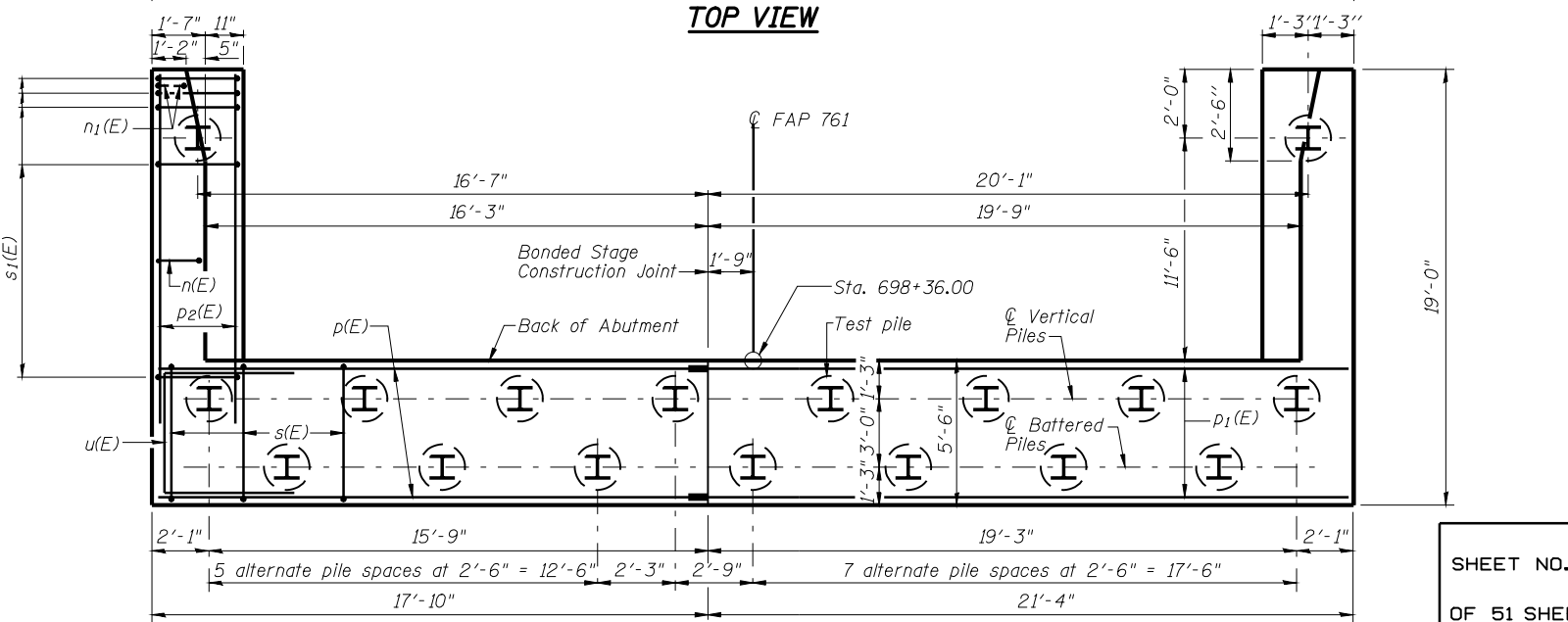
10-1-08



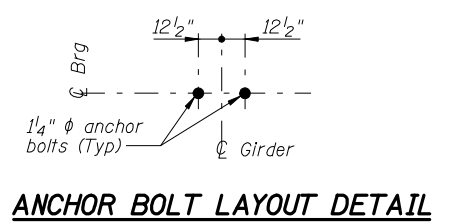
**ELEVATION**  
(Looking west)



**TOP VIEW**



**PLAN-PILE CAP**



**ANCHOR BOLT LAYOUT DETAIL**

**ABUTMENT BILL OF MATERIAL**

Bar	No.	Size	Length	Shape
h(E)	5	#6	16'-0"	—
h1(E)	5	#6	19'-6"	—
h2(E)	12	#5	16'-0"	—
h3(E)	12	#5	19'-6"	—
h4(E)	32	#5	7'-8"	—
h7(E)	26	#4	15'-3"	—
h8(E)	18	#4	15'-3"	—
n(E)	26	#6	15'-4"	—
n1(E)	12	#6	7'-6"	—
p(E)	10	#7	17'-7"	—
p1(E)	10	#7	21'-1"	—
p3(E)	12	#7	16'-6"	—
s(E)	48	#4	19'-3"	—
s1(E)	34	#4	9'-5"	—
u(E)	8	#6	13'-11"	—
v(E)	37	#5	4'-10"	—
v1(E)	37	#4	2'-10"	—
v7(E)	37	#5	8'-8"	—
v8(E)	37	#5	7'-7"	—
v9(E)	32	#6	9'-2"	—
v10(E)	6	#6	8'-9"	—
v11(E)	26	#6	9'-4"	—
Structure Excavation		Cu. Yd.	198	
Concrete Structures		Cu. Yd.	70.0	
Reinforcement Bars, Epoxy Coated		Pound	6110	
Furnishing Steel Piles HP12x53		Foot	640	
Driving Piles		Foot	640	
Test Pile Steel HP12x53		Each	1	
Concrete Encasement		Cu. Yd.	6.0	
Concrete Sealer		Sq. Ft.	523	
Bar Splicers		Each	64	

Note:  
For details of Bar Splicers, see sheet 45 of 51.

For details of piles and Concrete Encasement, see sheet 44 of 51.

B.F.= Back Face, F.F.= Front Face, E.F.= Each Face

**WEST ABUTMENT DETAILS  
STRUCTURE NUMBER 059-0510**

SHEET NO. 34 OF 51 SHEETS	F.A.P. RTE. 761	SECTION 107B-2	COUNTY MACOUPIN	TOTAL SHEETS 98	SHEET NO. 64
	FAP ROUTE 761 (IL RT 108)		CONTRACT NO. 72A94		
FED. ROAD DIST. NO.		ILLINOIS FED. AID PROJECT			