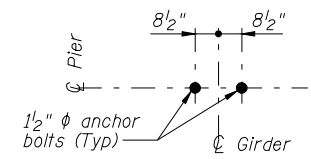
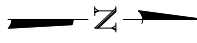


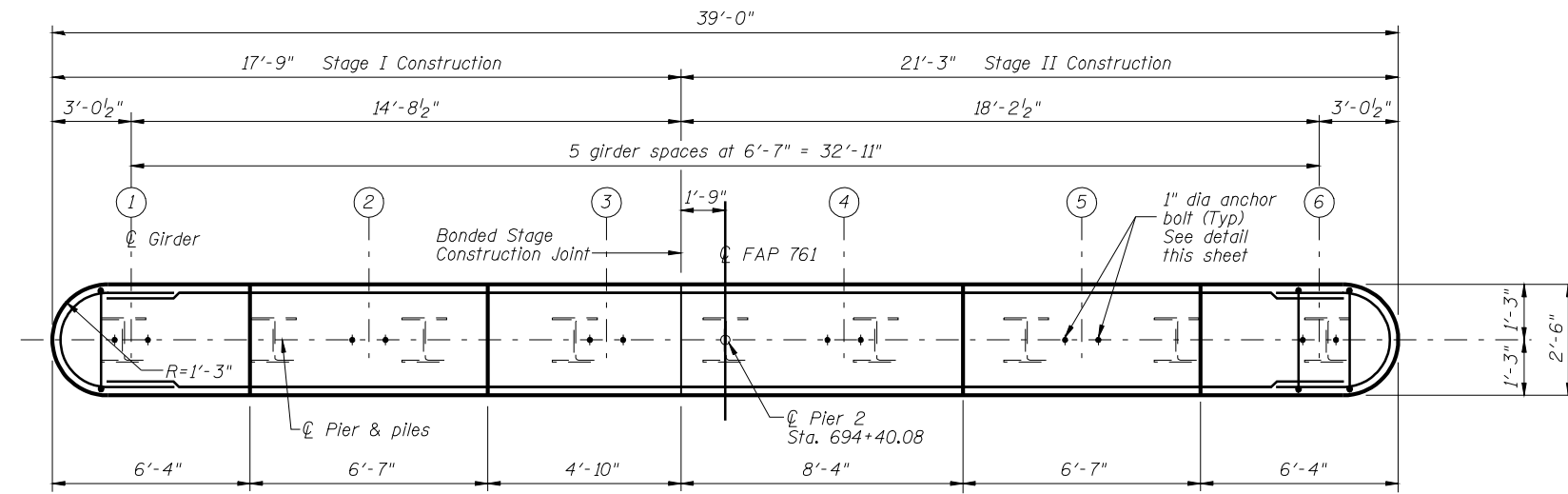
STATE OF ILLINOIS  
DEPARTMENT OF TRANSPORTATION



**ANCHOR BOLT LAYOUT DETAIL**

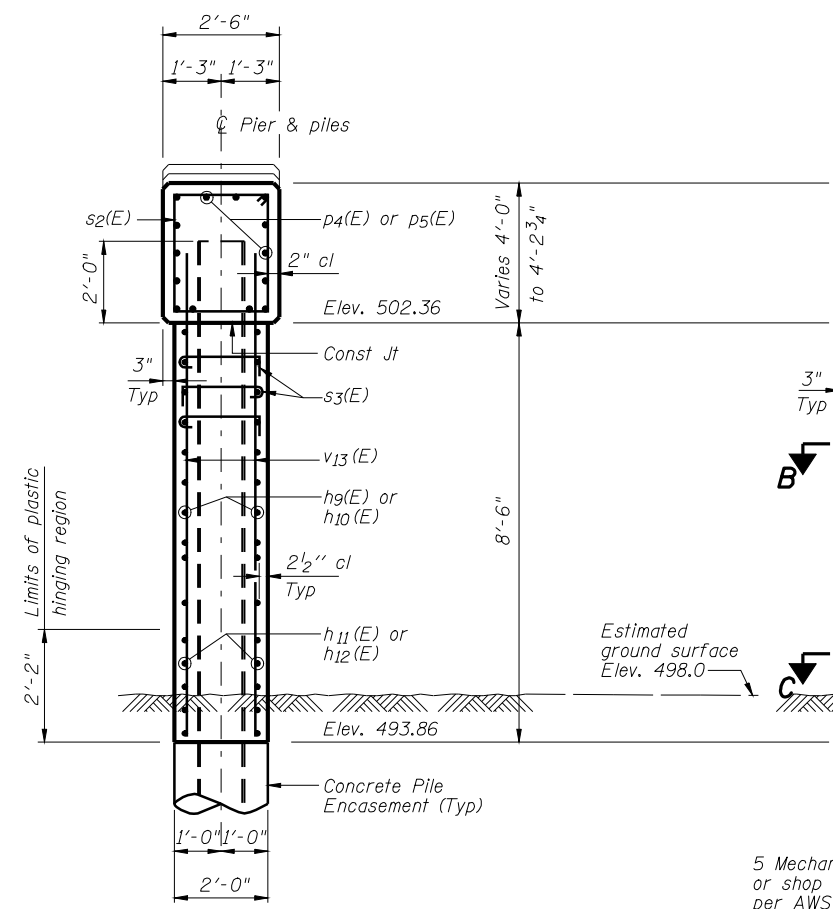
**PILE DATA**

Type: Steel HP12x63 with pile shoes  
Nominal Required Bearing: 497 kips  
Factored Resistance Available: 240 kips  
Est. Length: 78'  
No. Req'd: 8  
Test Pile: 1

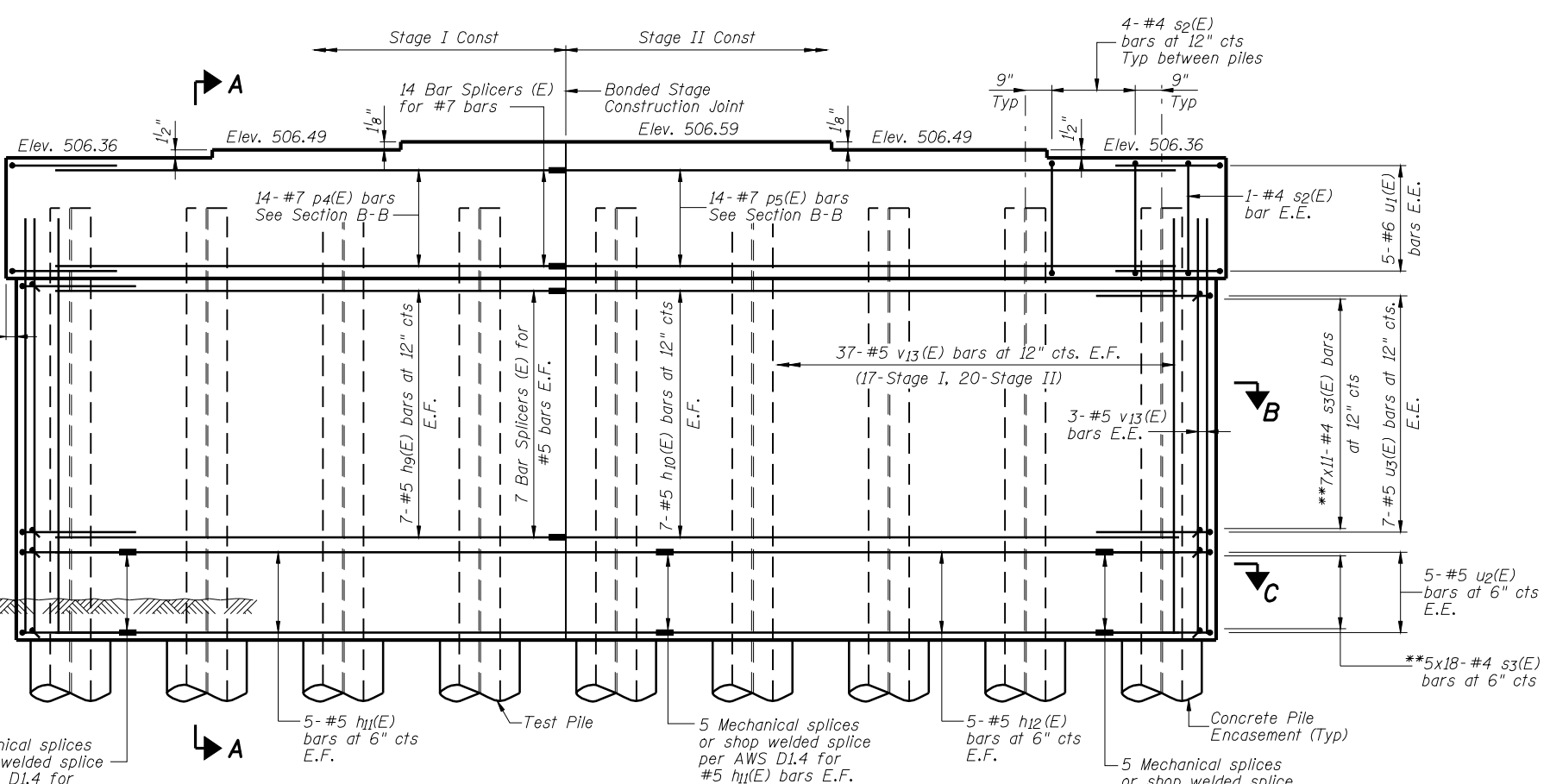


**TOP PLAN**

**MIN BAR LAP**  
#5 bar = 3'-8"  
#6 bar = 4'-5"



**SECTION A-A**



**ELEVATION**  
(Looking Up Station)

**\*\*Note:**  
The 90° hooks of two successive crossties, s<sub>3</sub>(E), shall be alternated end for end as shown in Sec A-A. For horizontal spacing see sheet 39 of 51.  
Bars indicated thus 10x14- #4 etc indicates 10 lines of bars with 14 bars per line.  
E.F. = Each Face E.E. = Each End

**PIER 2 DETAILS  
STRUCTURE NUMBER 059-0510**

DESIGNED -	J.M.B.
CHECKED -	T.E.S.
DRAWN -	R KING
CHECKED -	J.M.B.

**HOMER L. CHASTAIN & ASSOCIATES, LLP**  
CONSULTING ENGINEERS  
DECATUR (217) 422-8544  
CHICAGO (773) 714-0050  
ROCKFORD (815) 489-0050  
184-001397

SHEET NO. 38 OF 51 SHEETS	F.A.P. RTE. 761	SECTION 107B-2	COUNTY MACOUPIN	TOTAL SHEETS 98	SHEET NO. 68
	FAP ROUTE 761 (IL RT 108)		CONTRACT NO. 72A94		
FED. ROAD DIST. NO.		ILLINOIS FED. AID PROJECT			