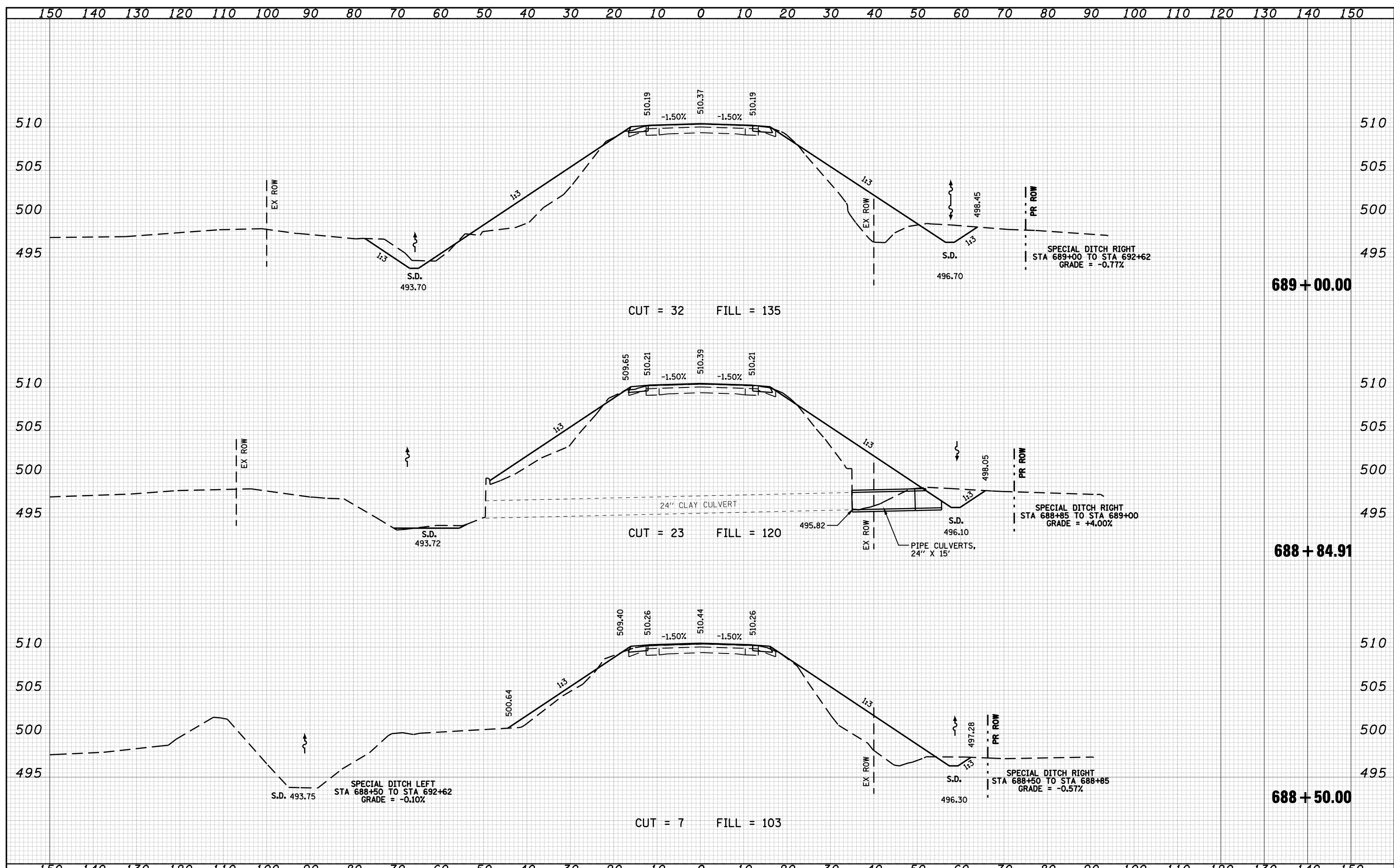


DATE	
BY	
SURVEYED	
PLOTTED	
TEMPLATE	
AREAS	
CHECKED	
FINAL SURVEY	
NOTE BOOK	
NO.	

DATE	
BY	
SURVEYED	
PLOTTED	
TEMPLATE	
AREAS	
CHECKED	
ORIGINAL SURVEY	
NOTE BOOK	
NO.	



FILE NAME =	USER NAME = laughlinr1	DESIGNED -	REVISED -	<b>STATE OF ILLINOIS</b> <b>DEPARTMENT OF TRANSPORTATION</b>	<b>CROSS SECTIONS FOR IL 108</b> <b>OVER HODGES CREEK</b>		F.A.P. RTE. 761	SECTION 107B-2	COUNTY MACOUPIN	TOTAL SHEETS 98	SHEET NO. 88
ca:\pw_work\PWIDOT\LAUGHLINRL\d0212999\672A94-5\ht-xssht.dgn	PLOT SCALE = 20.0000' / IN.	DRAWN -	REVISED -		SCALE:	SHEET NO.	OF SHEETS	STA. 688+50.00	TO STA. 689+00.00	CONTRACT NO. 72A94	ILLINOIS FED. AID PROJECT
PLOT DATE = Jun-28-2010 02:04:57PM	DATE -	CHECKED -	REVISED -								
		DATE -	REVISED -								