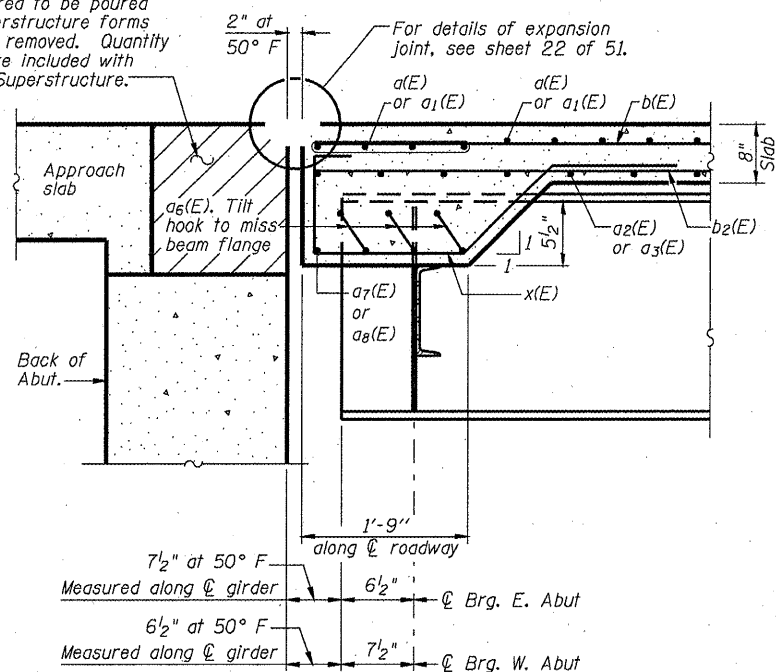


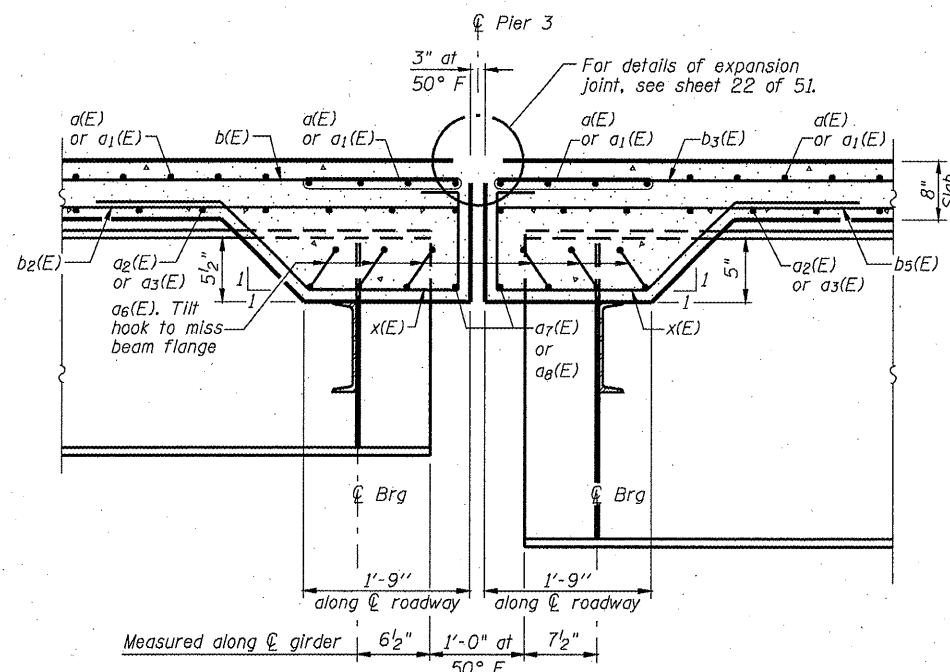
STATE OF ILLINOIS
DEPARTMENT OF TRANSPORTATION

**SUPERSTRUCTURE
BILL OF MATERIAL**

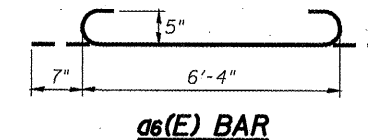
Hatched area to be poured after superstructure forms have been removed. Quantity of concrete included with Concrete Superstructure.



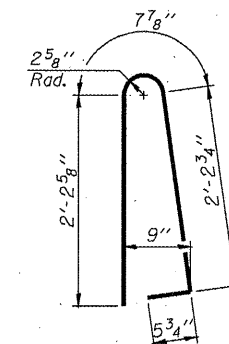
SECTION A-A



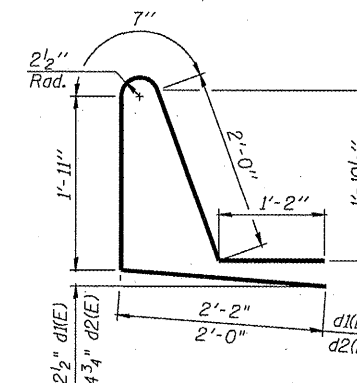
SECTION B-B



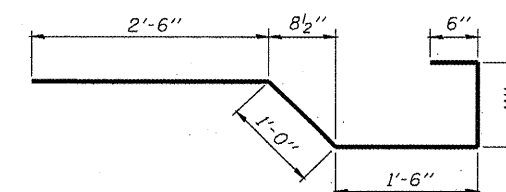
a6(E) BAR



BAR d(E)



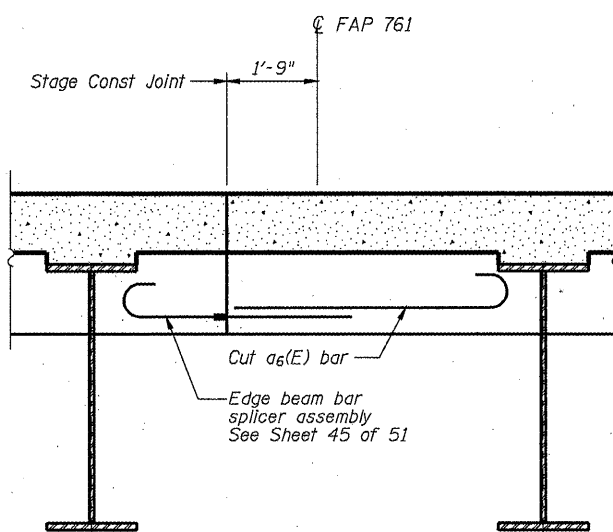
BAR d1(E) OR d2(E)



BAR x(E)

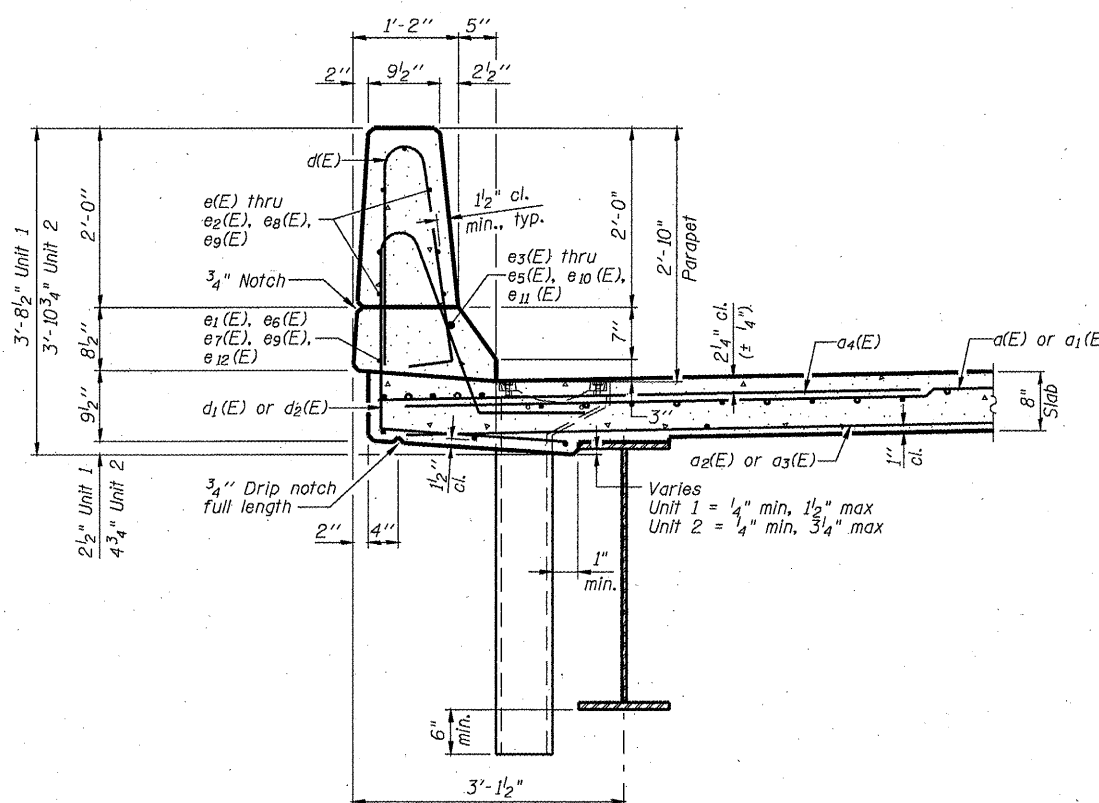
Bar	No.	Size	Length	Shape
a(E)	1053	#5	17'-3"	—
a1(E)	1053	#5	20'-9"	—
a2(E)	689	#5	17'-0"	—
a3(E)	689	#5	20'-6"	—
a4(E)	2102	#6	6'-6"	—
a5(E)	48	#5	1'-6"	—
a6(E)	60	#5	7'-6"	—
a7(E)	4	#5	14'-5"	—
a8(E)	4	#5	17'-11"	—
b(E)	378	#5	31'-4"	—
b1(E)	234	#6	19'-8"	—
b2(E)	360	#5	28'-6"	—
b3(E)	462	#5	31'-6"	—
b4(E)	117	#6	35'-0"	—
b5(E)	432	#5	29'-2"	—
d(E)	1246	#5	5'-7"	—
d1(E)	560	#5	7'-10"	—
d2(E)	686	#5	7'-8"	—
e(E)	112	#4	16'-4"	—
e1(E)	64	#4	13'-0"	—
e2(E)	56	#4	17'-3"	—
e3(E)	12	#8	25'-7"	—
e4(E)	8	#8	13'-0"	—
e5(E)	6	#8	26'-8"	—
e6(E)	12	#4	23'-6"	—
e7(E)	6	#4	24'-6"	—
e8(E)	224	#4	16'-9"	—
e9(E)	32	#4	19'-9"	—
e10(E)	20	#8	31'-7"	—
e11(E)	4	#8	19'-9"	—
e12(E)	20	#4	29'-0"	—
x(E)	128	#5	6'-5"	—
Reinforcement Bars, Epoxy Coated			Pound	181,940
Concrete Superstructure			Cu. Yd.	711.8
Bridge Deck Grooving			Sq. Yd.	2152
Protective Coat			Sq. Yd.	2784
Bar Splicers			Each	1754

Bars indicated thus 1 x 5-#8 etc. indicates 1 line of bars with 5 lengths per line.



SECTION C-C

(Deck reinforcement not shown for clarity)



SECTION THRU PARAPET

DESIGNED -	J.M.B.
CHECKED -	T.E.S.
DRAWN -	R KING
CHECKED -	J.M.B.

HOMER L. CHASTAIN & ASSOCIATES, LLP
CONSULTING ENGINEERS
DECATUR (217) 422-8544
CHICAGO (773) 714-0050
ROCKFORD (815) 489-0050
184-001397

S-D 10-1-08

**SUPERSTRUCTURE DETAILS
STRUCTURE NUMBER 059-0510**

SHEET NO. 21 OF 51 SHEETS	F.A.P. RTE. 761	SECTION 107B-2	COUNTY MACOUPIN	TOTAL SHEETS 98	SHEET NO. 51
	FAP ROUTE 761 (IL RT 108)		CONTRACT NO. 72A94		
FED. ROAD DIST. NO.		ILLINOIS FED. AID PROJECT			