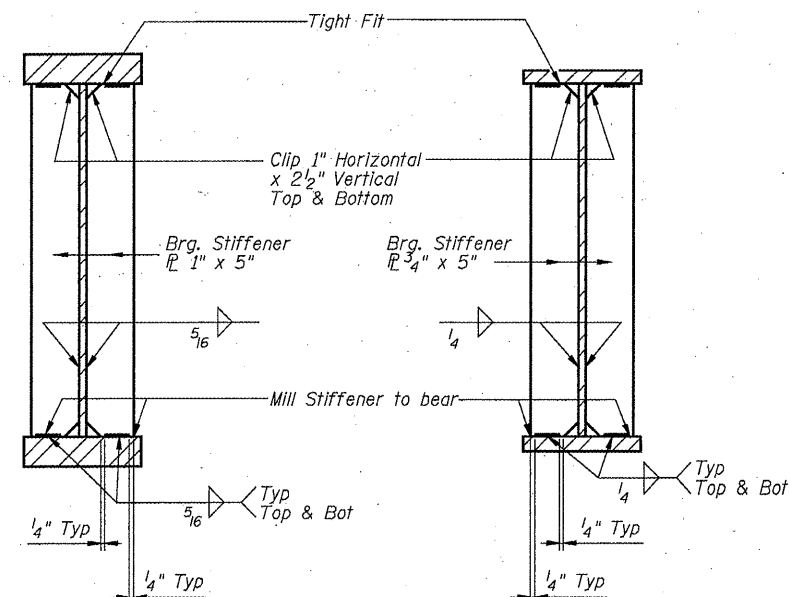
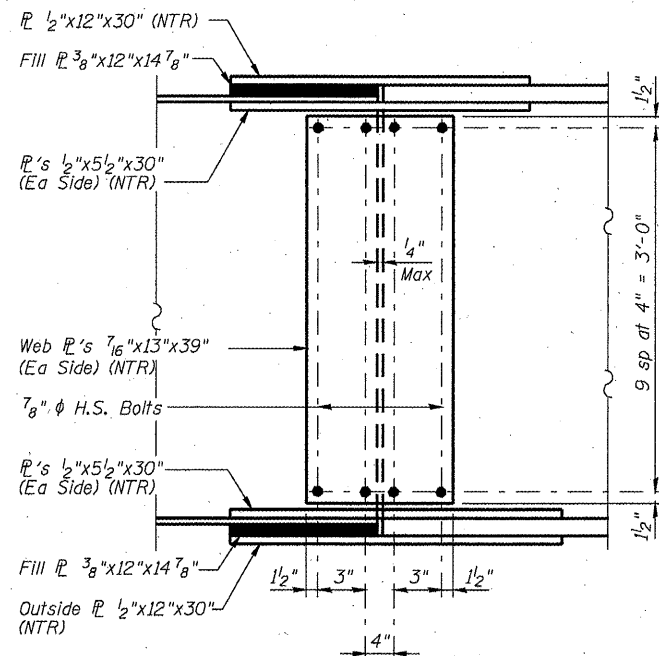


STATE OF ILLINOIS
DEPARTMENT OF TRANSPORTATION

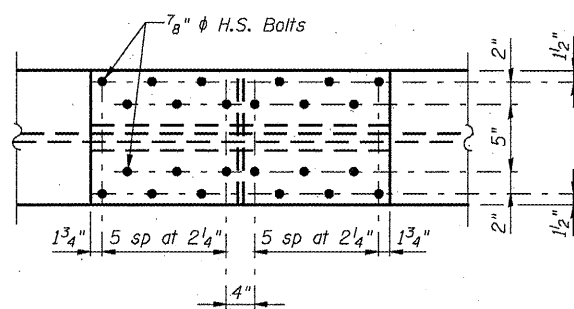


SECTION AT PIER

SECTION AT ABUTMENT

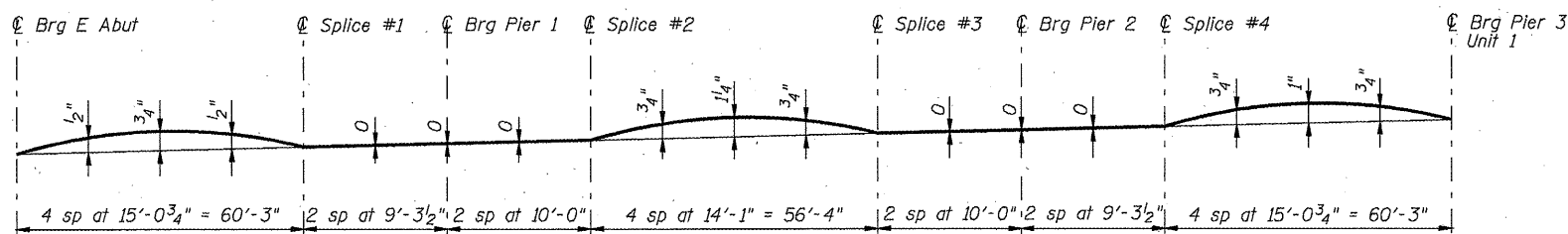


WEB SPLICE PLATE



TOP & BOTTOM FLANGE SPLICE PLATE

FIELD SPLICE DETAILS



CAMBER DIAGRAM

***TOP OF WEB ELEVATIONS**

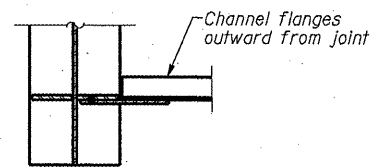
Location	Girder 1	Girder 2	Girder 3	Girder 4	Girder 5	Girder 6
CL Brg at E. Abut	508.966	509.092	509.195	509.195	509.092	508.966
CL Splice 1	509.206	509.332	509.435	509.435	509.332	509.206
CL Brg at Pier 1	509.344	509.470	509.572	509.572	509.470	509.344
CL Splice 2	509.492	509.618	509.721	509.721	509.618	509.492
CL Splice 3	510.028	510.155	510.257	510.257	510.155	510.028
CL Brg at Pier 2	510.220	510.346	510.449	510.449	510.346	510.220
CL Splice 4	510.398	510.524	510.627	510.627	510.524	510.398
CL Brg at Pier 3 Unit 1	511.017	511.143	511.246	511.246	511.143	511.017

* For fabrication only

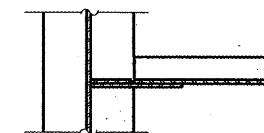
NOTES

All diaphragms shall be installed as steel is erected and secured with erection pins and bolts except as otherwise noted. Individual diaphragms at supports may be temporarily disconnected to install bearing anchor rods.

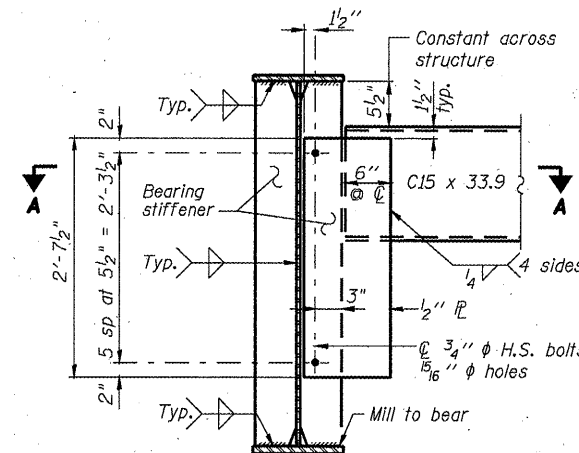
Load carrying components designated "NTR" shall conform to the Supplemental Requirements for Notch Toughness, Zone 2.



SECTION A-A



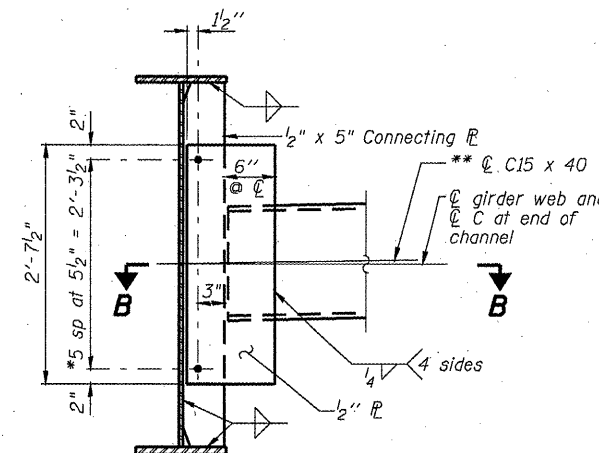
SECTION B-B



END DIAPHRAGM

(8 required)

Note:
Two hardened washers required for each set of oversized holes.



INTERIOR DIAPHRAGM

(60 required)

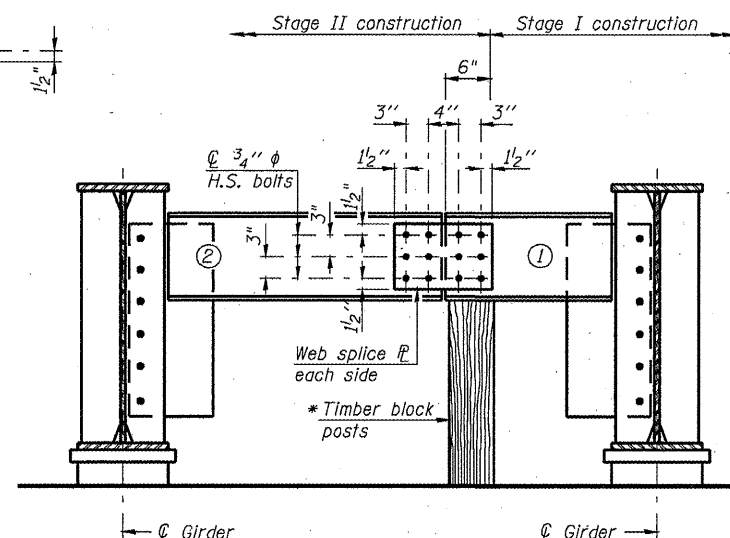
Note:
Two hardened washers required for each set of oversized holes.
* 3/4" H.S. bolts, 1 5/16" holes.

* For diaphragms at staged construction line, use slotted 1 5/16" x 1 1/8" holes at one end of bracing and 1 5/16" diameter oversized holes at other end. Bolts shall be finger tight until Stage II pour is complete.

** Alternate channels C15x50 are permitted to facilitate material acquisition. Calculated weight of structural steel is based on C15x40 sections. The alternate, if utilized, shall be provided at no extra cost to the Department.

END DIAPHRAGM STAGE CONSTRUCTION SEQUENCE

- 1.) Order diaphragm in two sections.
- 2.) Attach section ① of diaphragm to girder.
- 3.) Place timber block posts between section ① of diaphragm and abutment bearing section.
- 4.) Attach section ② of diaphragm to both girder and section ① of diaphragm during stage II construction with splice plates.
- 5.) Remove timber block posts.



END DIAPHRAGM AT STAGE CONSTRUCTION JOINT

(2 required)

* Cost of Timber Block Posts is included with Structural Steel.

DESIGNED -	J.M.B.
CHECKED -	T.E.S.
DRAWN -	R KING
CHECKED -	J.M.B.

HOMER L. CHASTAIN & ASSOCIATES, LLP
CONSULTING ENGINEERS
DECATUR (217) 422-8544
CHICAGO (773) 714-0050
ROCKFORD (815) 489-0050
184-001397

**FRAMING DETAILS - UNIT 1
STRUCTURE NUMBER 059-0510**

SHEET NO. 26 OF 51 SHEETS	F.A.P. RTE. 761	SECTION 107B-2	COUNTY MACOUPIN	TOTAL SHEETS 98	SHEET NO. 56
	FAP ROUTE 761 (IL RT 108)		CONTRACT NO. 72A94		
FED. ROAD DIST. NO.		ILLINOIS FED. AID PROJECT			