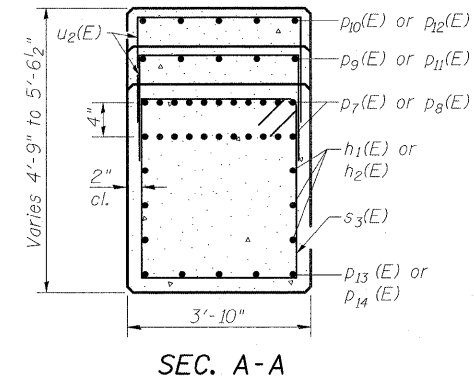
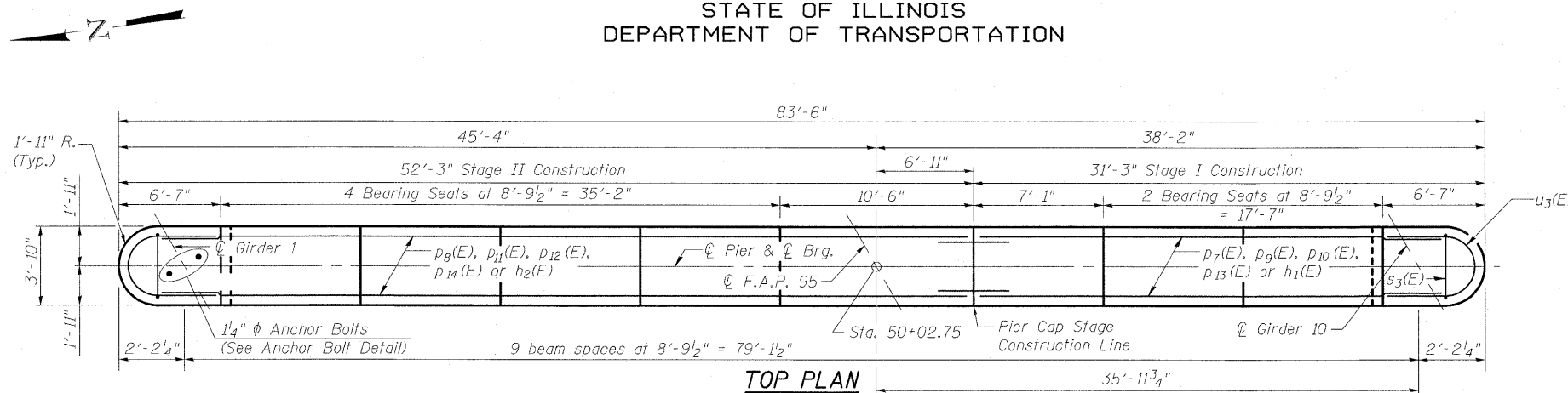


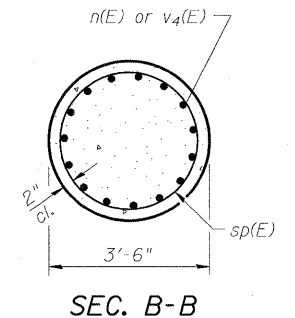
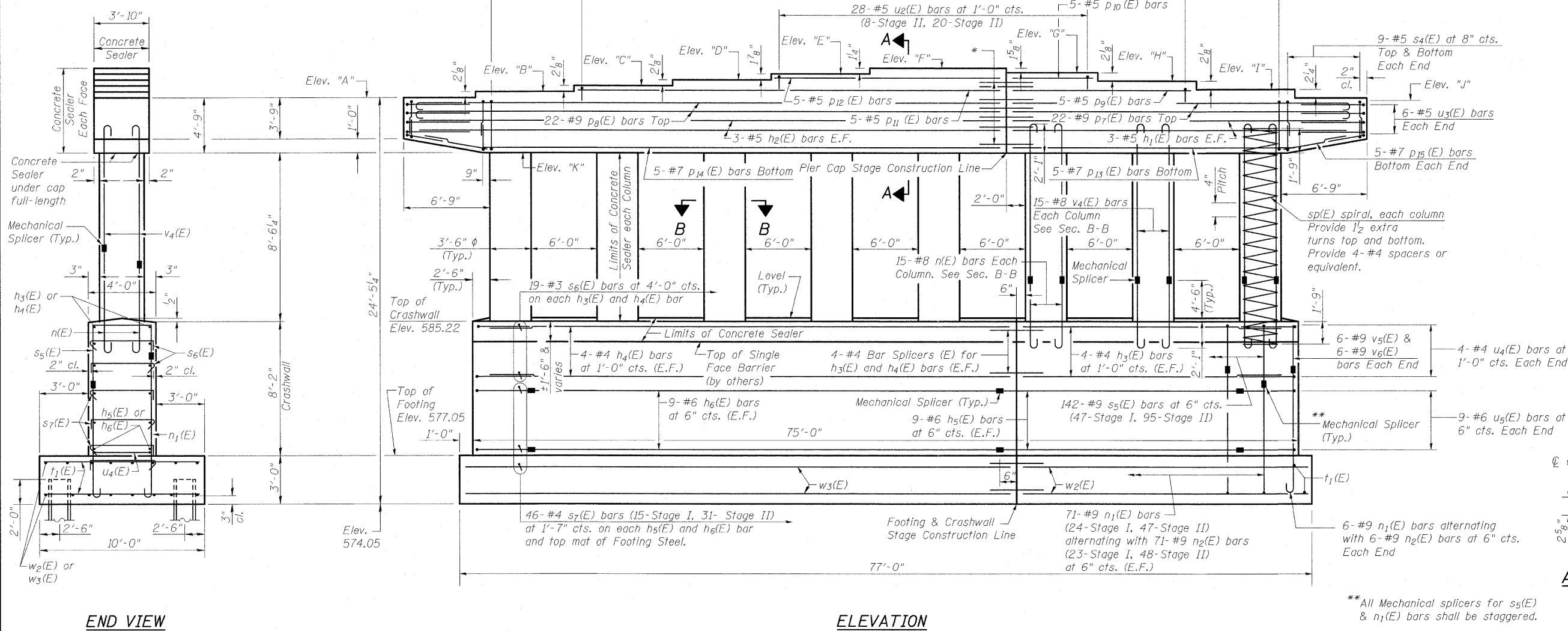
STATE OF ILLINOIS  
DEPARTMENT OF TRANSPORTATION

Notes:  
Space reinforcement in cap to miss anchor bolts.  
Pour steps monolithically with cap.  
E.F. indicates Each Face.  
Clear cover noted to Mechanical Splicers, where applicable.

Single Face Median Barriers (by others) on each face of Crashwall are not shown for clarity. See Section B-B on Sheet 1 of 38 for Crashwall and Median Barriers (by others).  
See Sheet 32B of 38 for Footing Plan, Crashwall Plan, Bar Bends and Bill of Materials.

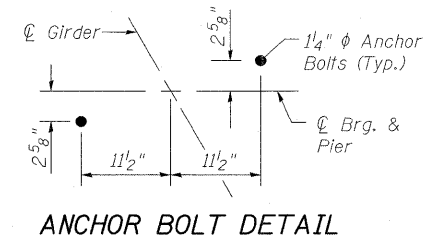


\*16- #5 Bar Splicers (E) for h1(E), h2(E), p9(E), p10(E), p11(E) and p12(E)  
5 - #7 Bar Splicers (E) for p13(E) and p14(E)  
22 - #9 Bar Splicers (E) for p7(E) and p8(E)



ELEVATION DATA

Elev. A	598.50
Elev. B	598.67
Elev. C	598.84
Elev. D	599.02
Elev. E	599.18
Elev. F	599.28
Elev. G	599.15
Elev. H	598.98
Elev. I	598.79
Elev. J	598.61
Elev. K	593.75



\*\* All Mechanical splicers for s5(E) & n1(E) bars shall be staggered.

PIER DETAILS  
STRUCTURE NO. 025-0106

DESIGNED	A.C.S.
CHECKED	B.B.
DRAWN	W.J.S.
CHECKED	C.J.F.

BERNARDIN  
LOCHMUELLER &  
ASSOCIATES, INC.

3 Oak Drive  
Maryville, IL 62052-5685  
Local (618) 388-4600  
Fax 618-298-4666

SHEET NO. 32 38 SHEETS	F.A.I. RTE. 57/70	SECTION (25-3HB-2)B	COUNTY EFFINGHAM	TOTAL SHEETS 839	SHEET NO. 360A
	SN 025-0106		CONTRACT NO. 74293		
FED. ROAD DIST. NO. 7 ILLINOIS FED. AID PROJECT					