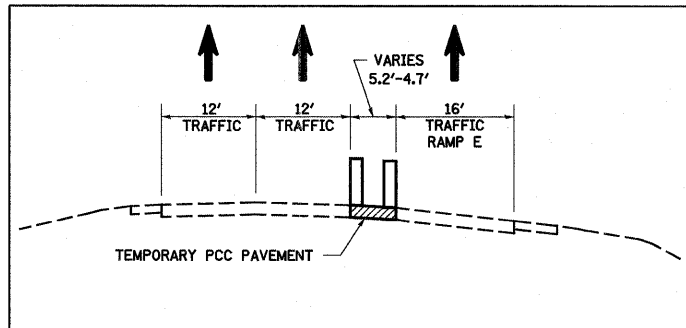
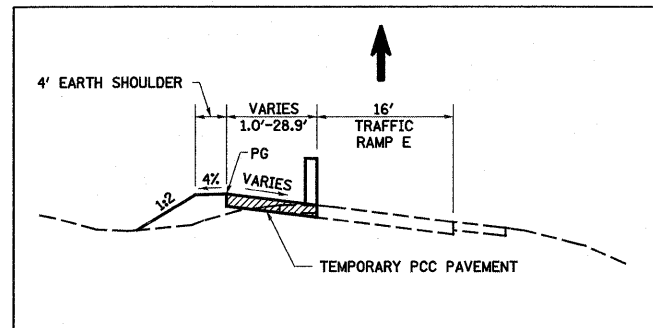


**TEMPORARY RAMP E1 CONNECTOR**

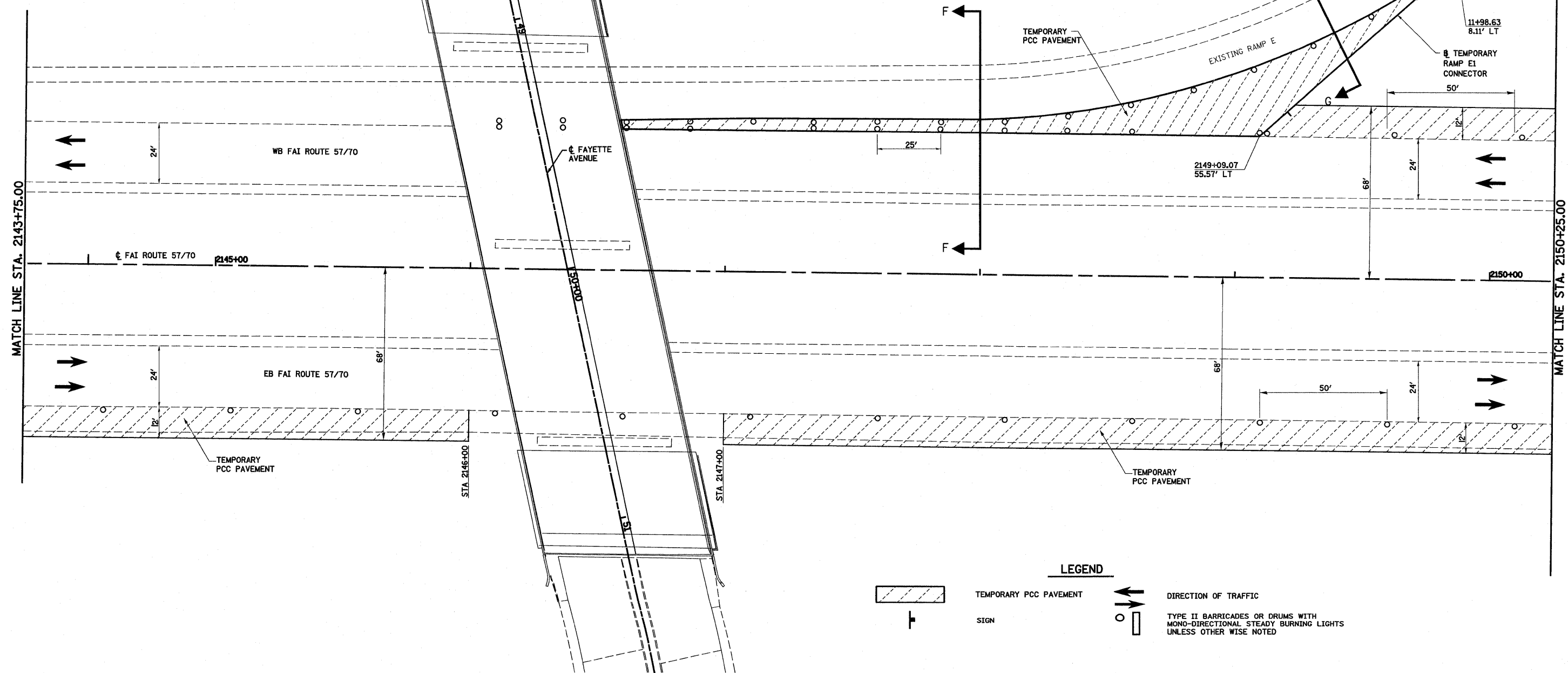
DESCRIPTION	COORDINATE	
	NORTHING	EASTING
POT STA 0+00.00	894038.79	917463.46
POT STA 1+14.66	893937.78	917517.72



SECTION F-F

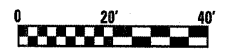


SECTION G-G



**LEGEND**

- TEMPORARY PCC PAVEMENT
- SIGN
- DIRECTION OF TRAFFIC
- TYPE II BARRICADES OR DRUMS WITH MONO-DIRECTIONAL STEADY BURNING LIGHTS UNLESS OTHERWISE NOTED



FILE NAME =	USER NAME = paul	DESIGNED - JWS	REVISED -	<b>STATE OF ILLINOIS DEPARTMENT OF TRANSPORTATION</b>	<b>MAINTENANCE OF TRAFFIC, PRE-STAGE 1, FAI 57/70</b>	F.A.I. RTE.	SECTION	COUNTY	TOTAL SHEETS	SHEET NO.	
Si\Projects\403-00072-51-70\dm\Fayette\mof_570_P5.dgn		DRAWN - PDB	REVISED -			57/70	(25-3)-6	EFFINGHAM	839	88	
PLOT SCALE = 40,0000' / IN.		CHECKED - BRM	REVISED -			CONTRACT NO. 74293					
PLOT DATE = 6/24/2010		DATE - 11-16-07	REVISED -			FED. ROAD DIST. NO. ILLINOIS FED. AID PROJECT					