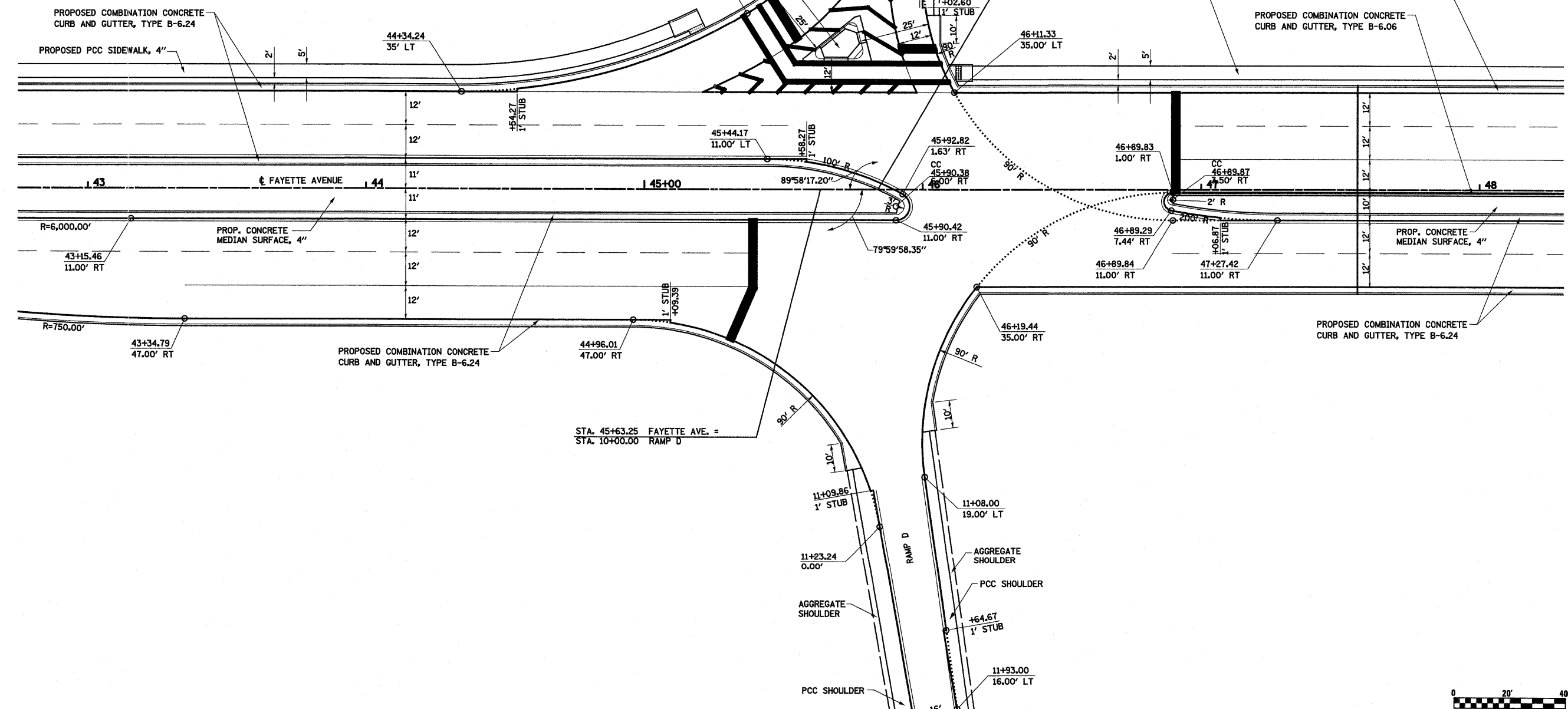


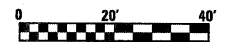
DESCRIPTION	GROUND COORDINATES FOR ISLAND RADII	
	NORTH	EAST
CC R 1	917071.20	893719.60
CC R 2	917083.34	893720.35
CC R 3	917082.50	893720.40

TWO-CENTERED CURVE
80'-200'
17' OFFSET



STA. 45+63.25 FAYETTE AVE. =
STA. 10+00.00 RAMP D

STA. 45+83.88 FAYETTE AVE. =
STA. 22+68.17 RAMP A



FILE NAME = S:\Projects\403-00072.57-70\dgn\Fayette\1d_AB_BC.dgn	USER NAME = paul	DESIGNED - JWS	REVISED -	STATE OF ILLINOIS DEPARTMENT OF TRANSPORTATION	INTERSECTION DETAIL, RAMPS A AND D, FAYETTE AVENUE	F.A.T. RTE. 57/70	SECTION (25-3)I-6	COUNTY EFFINGHAM	TOTAL SHEETS 839	SHEET NO. 186		
PLOT SCALE = 40,00000 ' / IN.	CHECKED - BRM	DATE - 4-28-08	REVISED -			SCALE: 1"=20'	SHEET NO. 1 OF 3 SHEETS	STA. 43+00.00 TO STA. 48+00.00	CONTRACT NO. 74293			
PLOT DATE = 6/24/2010	DATE - 4-28-08	REVISED -	REVISED -			FED. ROAD DIST. NO. ILLINOIS FED. AID PROJECT						