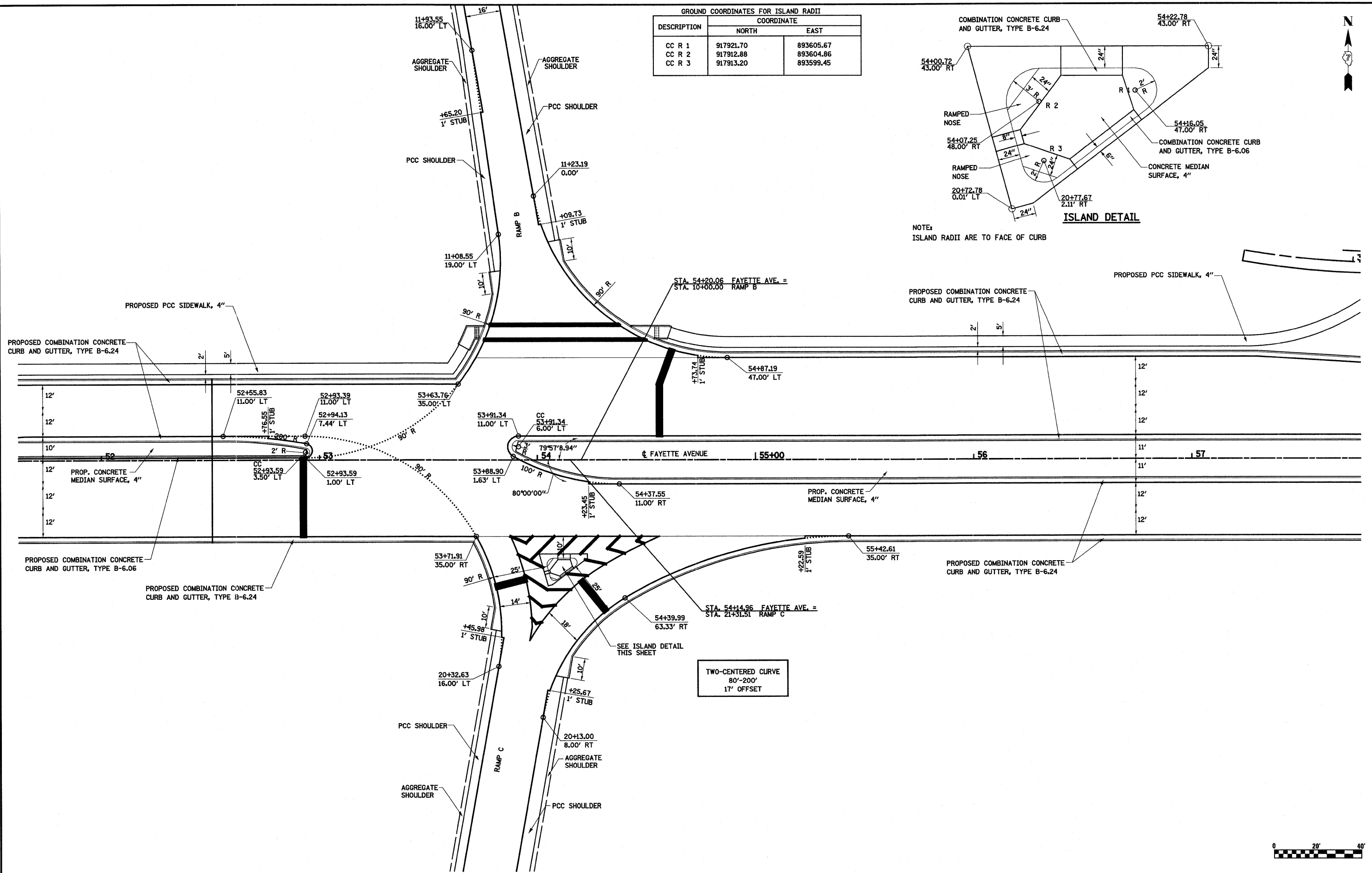
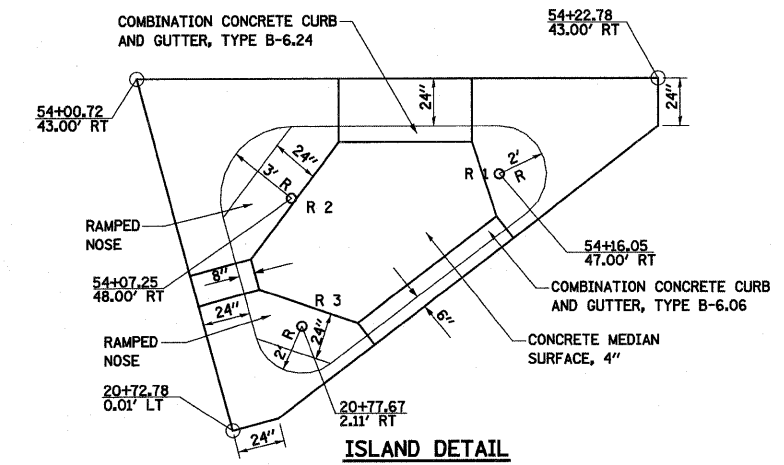


DESCRIPTION	COORDINATE	
	NORTH	EAST
CC R 1	917921.70	893605.67
CC R 2	917912.88	893604.86
CC R 3	917913.20	893599.45



FILE NAME =	USER NAME = paul	DESIGNED - JWS	REVISED -	STATE OF ILLINOIS DEPARTMENT OF TRANSPORTATION	INTERSECTION DETAIL, RAMPS B AND C, FAYETTE AVENUE	F.A.I. RTE.	SECTION	COUNTY	TOTAL SHEETS	SHEET NO.	
S:\Projects\403-00072-51-70\dgn\Fayette\14_AD_BC.dgn		DRAWN - PDB	REVISED -			57/70	(25-3)I-6	EFFINGHAM	839	187	
PLOT SCALE = 1/8" = 1' IN.		CHECKED - BRM	REVISED -			SCALE: 1"=20'		SHEET NO. 2 OF 3 SHEETS		STA. 52+00.00 TO STA. 57+00.00	
PLOT DATE = 6/24/2010		DATE - 4-28-08	REVISED -			CONTRACT NO. 74293		FED. ROAD DIST. NO. ILLINOIS FED. AID PROJECT			