

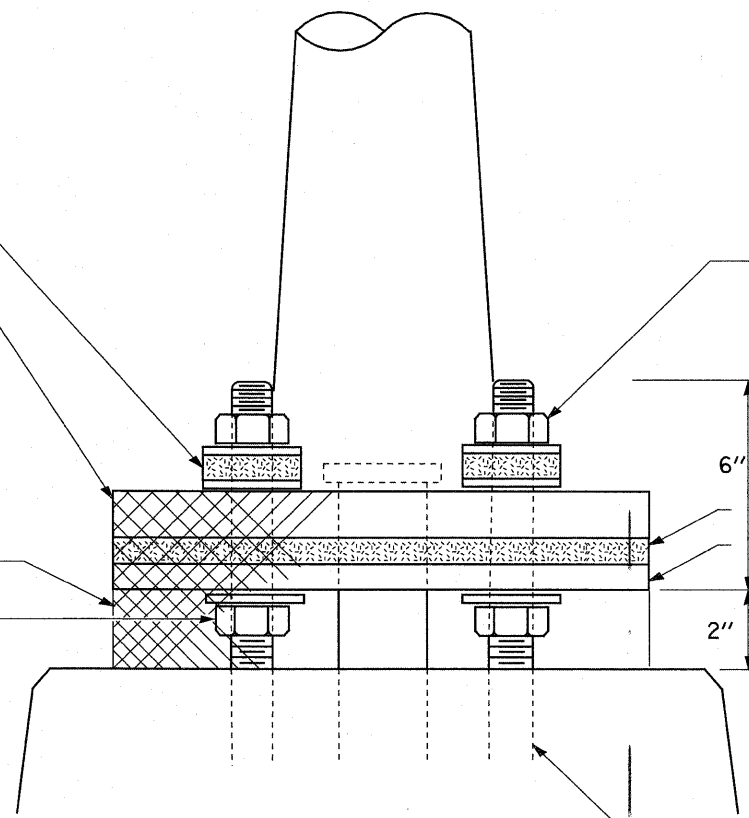
2 1/2 " O.D. x 1/4 " galvanized steel flat washer either side of 2 1/2 " O.D. x 1/2 " isolation washer. See notes 3 and 5.

Pole base plate

Stainless steel standard grade wire cloth, 6x6 (1/4") mesh or less with #16 gauge (0.062") diameter or heavier wire.

Attach with 1/2" stainless steel banding or tie back onitself with stainless steel wire ties. Finished installation must prevent rodent entry.

1" levelling nuts



1" self-locking nut or double nut. Install with torque wrench and torque to the isolation pad manufacturer's specifications.

1/2 " min. isolation pad - see note 3.

1/2 " min. galvanized steel levelling plate. Size to match pole base plate - see note 3.

1" high strength anchor bolts in bridge parapet.

Pole Mounted on Bridge Parapet Detail

GENERAL NOTES

1. Locate poles over bridge piers where possible.
2. The vibration isolation pad and levelling plate shall match the footprint of the pole base plate.
3. Thickness of isolation pad and washers shall be according to the isolation pad manufacturer's recommendations based upon pole height and loading.
4. Should the length of the exposed anchor bolts be too short on an existing bridge to mount the poles as shown, then the levelling plate shall be mounted directly on the concrete and leveled with stainless steel washers. Remove concrete as directed by the Engineer to fully thread the top nut.
5. The diameter of the flat washer on either side of isolation washer shall be at least the same as diameter of isolation washer.

All dimensions are in millimeters (inches) unless otherwise shown.

FILE NAME =	USER NAME = paul	DESIGNED -	REVISED -	STATE OF ILLINOIS DEPARTMENT OF TRANSPORTATION	POLE MOUNTED ON BRIDGE PARAPET, FAYETTE AVENUE			F.A.I. RTE.	SECTION	COUNTY	TOTAL SHEETS	SHEET NO.
S:\Projects\403-00072-57-70\dgn\FayetteLighting.dgn		DRAWN -	REVISED -					57/70	(25-3)1-6	EFFINGHAM	839	283
PLOT SCALE = 40,0000 ' / IN.		CHECKED -	REVISED -		SCALE: SHEET NO. 21 OF 24 SHEETS STA. TO STA.			CONTRACT NO. 74293				
PLOT DATE = 6/23/2018		DATE -	REVISED -		FED. ROAD DIST. NO. ILLINOIS FED. AID PROJECT							