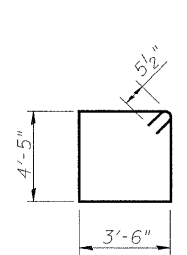
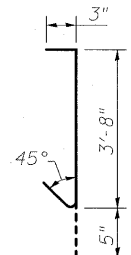


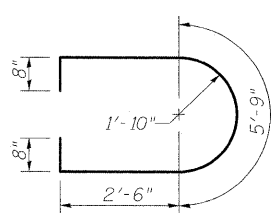
STATE OF ILLINOIS
DEPARTMENT OF TRANSPORTATION



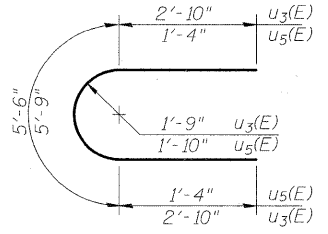
BAR $s_3(E)$



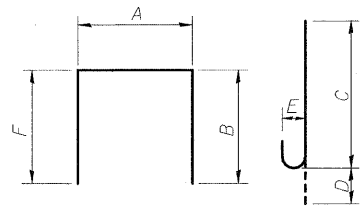
BAR $s_6(E)$ & $s_7(E)$



BAR $u_4(E)$



BARS $u_3(E)$ & $u_5(E)$



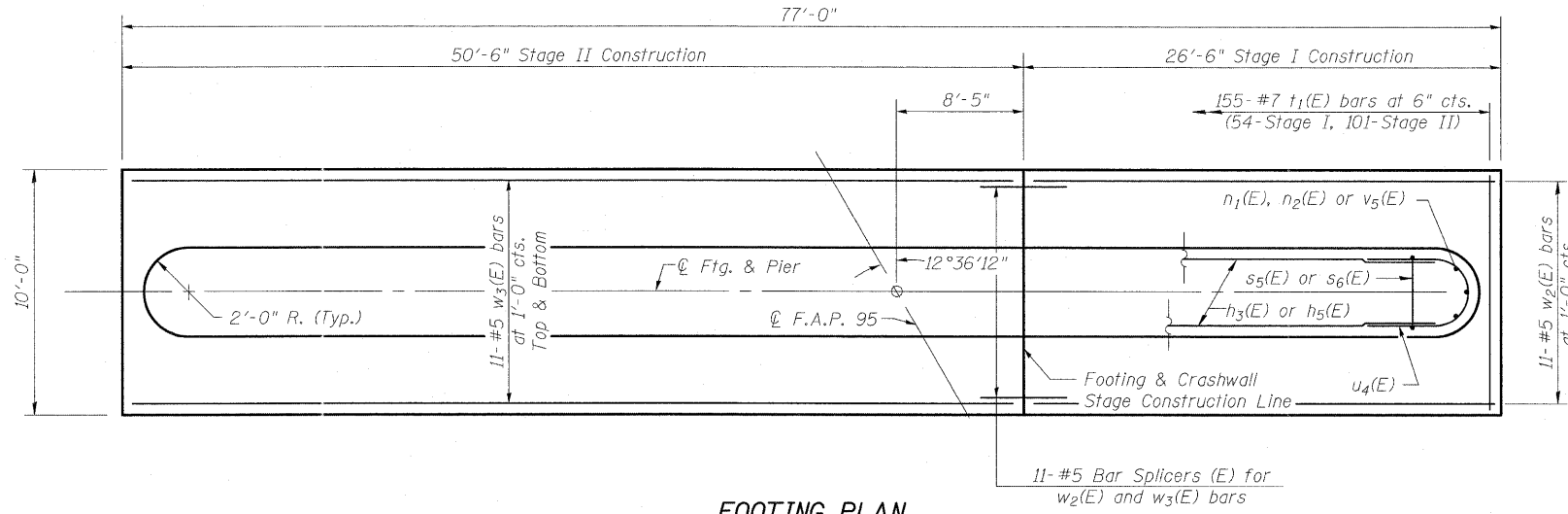
BARS

A, B, C, D, E & F DIMENSIONS

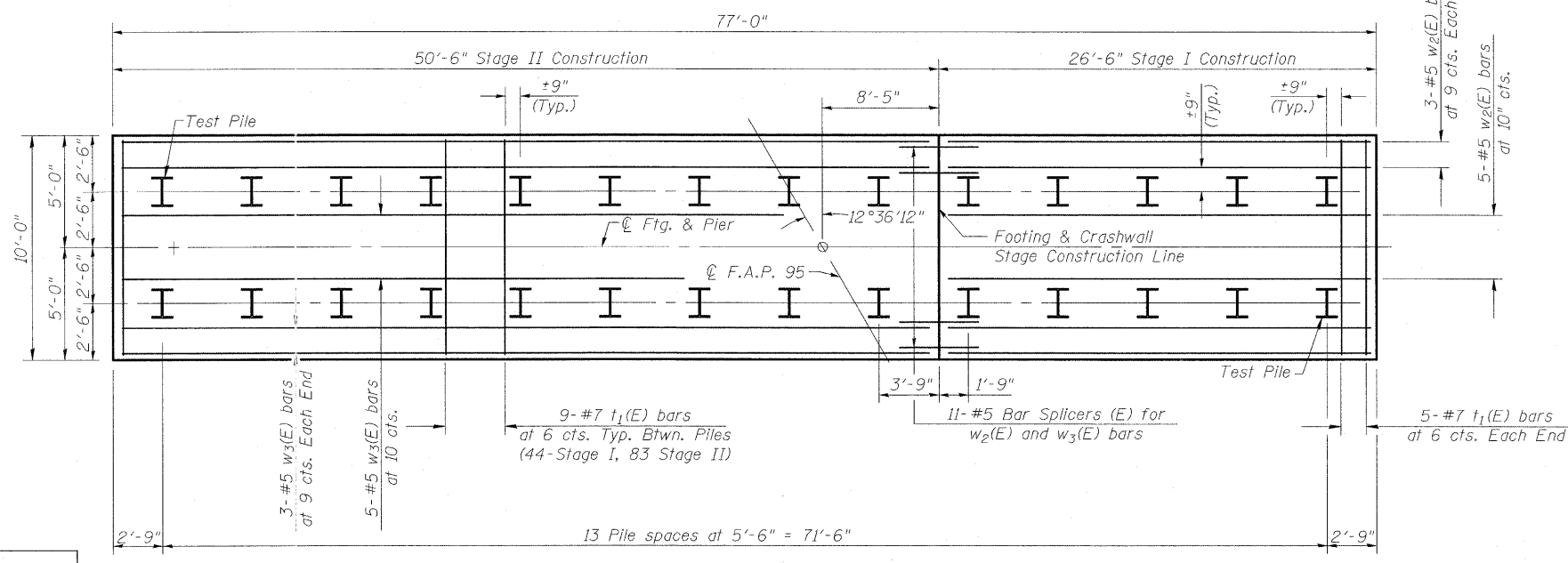
Bar	A	B	C	D	E	F
$n(E)$			6'-7"	11"	8"	
$n_1(E)$			7'-3"	1'-3"	11 $\frac{3}{4}$ "	
$n_2(E)$			7'-9"	1'-3"	11 $\frac{3}{4}$ "	
$p_7(E)$			29'-2"	1'-3"	11 $\frac{3}{4}$ "	
$p_8(E)$			50'-2"	1'-3"	11 $\frac{3}{4}$ "	
$s_4(E)$	3'-6"	3'-6"				3'-6"
$s_5(E)$	3'-8"	3'-0"				3'-6"
$u_2(E)$	3'-6"	1'-4"				1'-4"
$v_4(E)$			6'-2"	11"	8"	

BILL OF MATERIAL

Bar	No.	Size	Length	Shape
$h_1(E)$	6	#5	29'-2"	—
$h_2(E)$	6	#5	50'-2"	—
$h_3(E)$	8	#4	23'-4"	—
$h_4(E)$	8	#4	47'-4"	—
$h_5(E)$	18	#6	22'-8"	—
$h_6(E)$	18	#6	45'-8"	—
$n(E)$	120	#8	7'-6"	U
$n_1(E)$	154	#9	8'-6"	U
$n_2(E)$	154	#9	9'-0"	U
$p_7(E)$	22	#9	30'-5"	U
$p_8(E)$	22	#9	51'-5"	U
$p_9(E)$	5	#5	15'-7"	—
$p_{10}(E)$	5	#5	6'-10"	—
$p_{11}(E)$	5	#5	36'-7"	—
$p_{12}(E)$	5	#5	19'-0"	—
$p_{13}(E)$	5	#7	25'-0"	—
$p_{14}(E)$	5	#7	46'-0"	—
$p_{15}(E)$	10	#7	5'-10"	—
$s_3(E)$	71	#5	16'-9"	□
$s_4(E)$	36	#5	10'-6"	U
$s_5(E)$	142	#9	10'-2"	—
$s_6(E)$	76	#3	4'-4"	—
$s_7(E)$	460	#4	4'-4"	—
$sp(E)$	8	#5	12'-1"	W
$t_1(E)$	282	#7	9'-6"	—
$u_2(E)$	82	#5	6'-2"	U
$u_3(E)$	12	#5	11'-2"	—
$u_4(E)$	8	#4	12'-1"	—
$u_5(E)$	18	#6	8'-5"	—
$v_4(E)$	120	#8	7'-1"	U
$v_5(E)$	12	#9	3'-6"	—
$v_6(E)$	12	#9	3'-0"	—
$w_2(E)$	22	#5	26'-1"	—
$w_3(E)$	22	#5	50'-1"	—
Structure Excavation		Cu. Yd.	228	
Concrete Structures		Cu. Yd.	260.2	
Reinforcement Bars, Epoxy Coated		Pound	43705	
Furnishing Steel Piles, HP 12x63		Foot	884	
Driving Piles		Foot	884	
Test Pile, HP 12x63		Each	2	
Pile Shoes		Each	26	
Bar Splicers		Each	73	
Mechanical Splicers		Each	482	
Concrete Sealer		Sq. Ft.	2573	



FOOTING PLAN
(Showing Top Reinforcement)



FOOTING PLAN
(Showing Bottom Reinforcement)

Notes:
Space $t_1(E)$, $w_2(E)$ and $w_3(E)$ bars to miss piles.
For details of piles see sheet 33 of 38.
For pile embedment into footing see End View on sheet 32 of 38.

PILE DATA

Type: HP 12x63 with Pile Shoes
Nominal Required Bearing: 497k
Factored Resistance Available: 249k
Est. Length: 34'-0"
No. Production Piles: 26
No. Test Piles: 2

PIER DETAILS
STRUCTURE NO. 025-0106

DESIGNED	A.C.S.
CHECKED	B.B.
DRAWN	W.J.S.
CHECKED	C.J.F.

BERNARDIN LOCHMUELLER & ASSOCIATES, INC.
3 Oak Drive
Mareville, IL 62862-5635
Local (618) 288-4695
Fax 618-288-4666

SHEET NO. 32B	F.A.I. RTE.	SECTION	COUNTY	TOTAL SHEETS	SHEET NO.
38 SHEETS	57/70	(25-3HB-2)B	EFFINGHAM	839	361
SN 025-0106			CONTRACT NO. 74293		
FED. ROAD DIST. NO. 7 ILLINOIS FED. AID PROJECT					