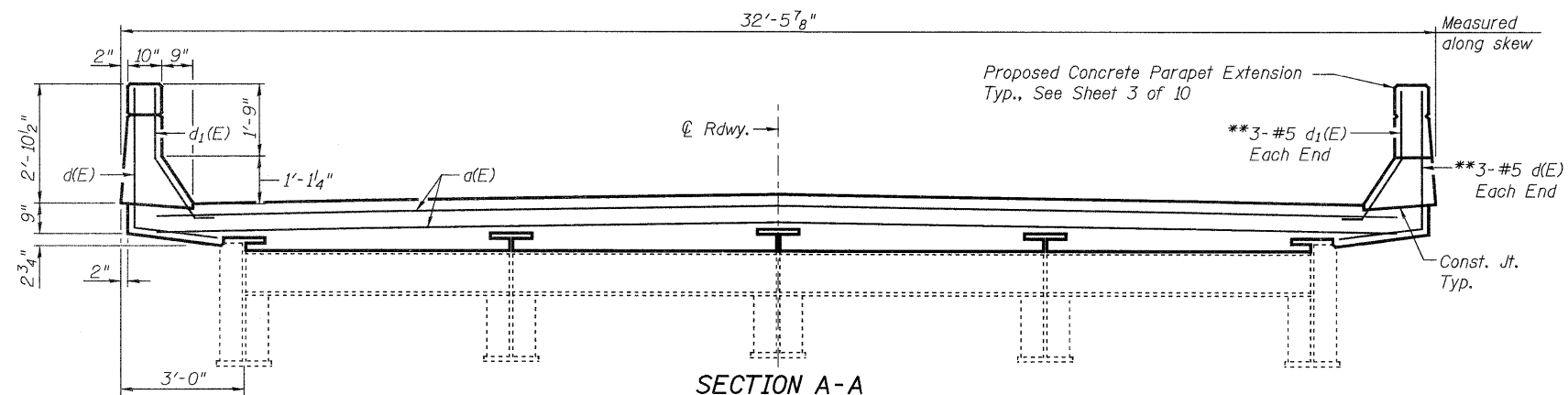
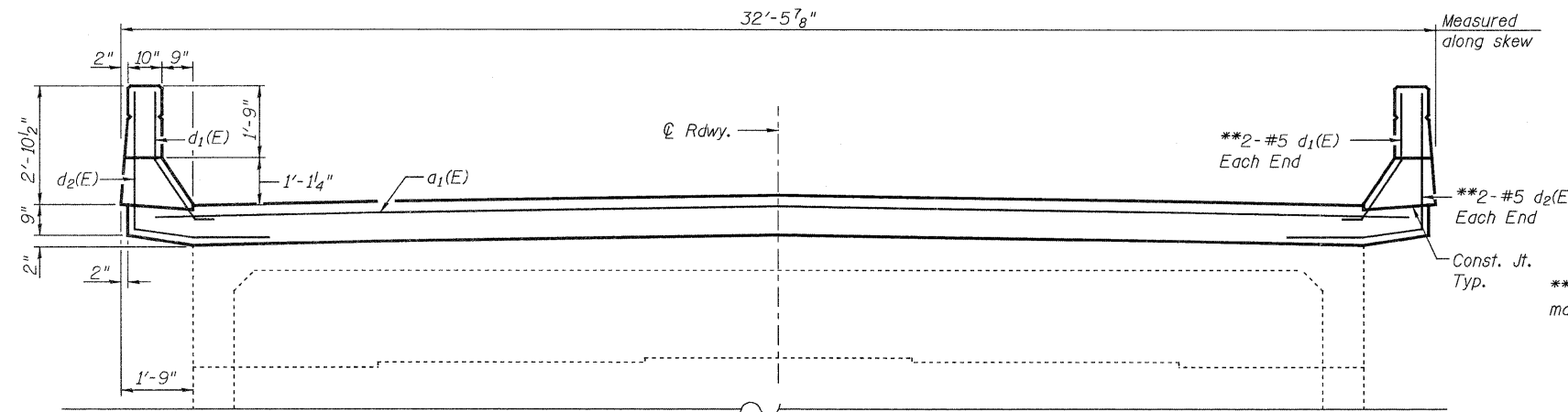


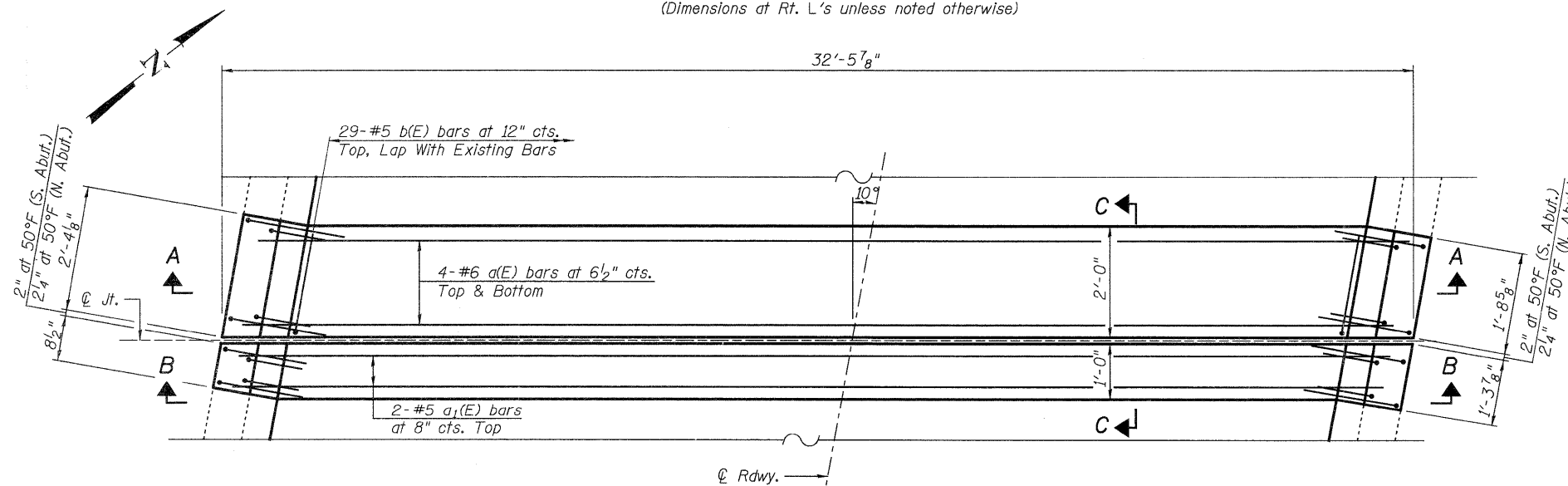
STATE OF ILLINOIS  
DEPARTMENT OF TRANSPORTATION



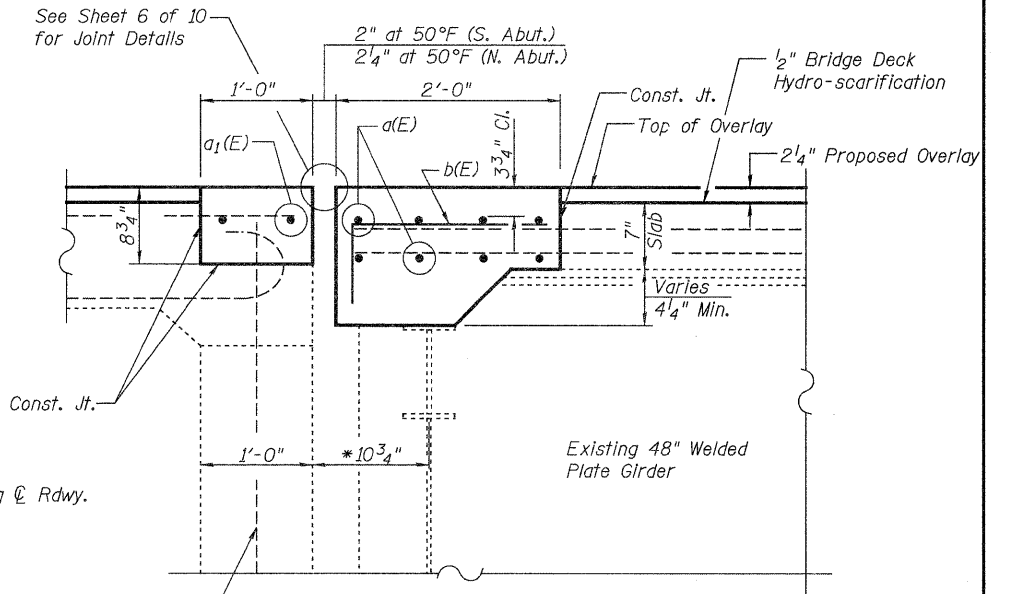
**SECTION A-A**  
(Dimensions at Rt. L's unless noted otherwise)



**SECTION B-B**  
(Dimensions at Rt. L's unless noted otherwise)



**PLAN**  
(South abutment shown, North abutment similar)

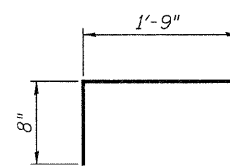


**SECTION C-C**  
(Dimensions at Rt. L's)

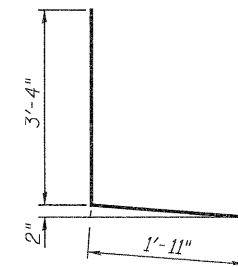
\* Along  $\varnothing$  Rdwy.

Existing Reinforcement  
Shall Remain in Place,  
Typ.

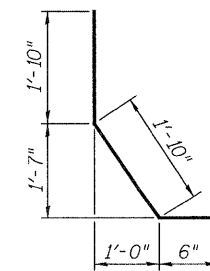
\*\*Rotate as necessary to  
maintain clearance



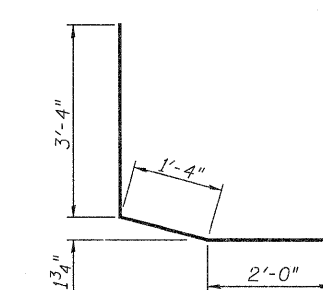
**BAR b(E)**



**BAR d(E)**



**BAR d1(E)**



**BAR d2(E)**

**BILL OF MATERIAL**  
(Two Abutments)

Bar	No.	Size	Length	Shape
a(E)	16	#6	31'-4"	—
a1(E)	4	#5	31'-4"	—
b(E)	58	#5	2'-5"	┌
d(E)	12	#5	5'-3"	└
d1(E)	20	#5	4'-2"	└
d2(E)	8	#5	6'-8"	└
Reinforcement Bars, Epoxy Coated			Pound	1240
Concrete Superstructure			Cu. Yd.	8.3

**EXPANSION JOINT CONCRETE DETAILS**  
**STRUCTURE NO. 060-0195**

SHEET 5 OF 10	F.A.I. RTE.	SECTION	COUNTY	TOTAL SHEETS	SHEET NO.
	55	60-3RS-1, 60-(3HB,3HB-1)I	MADISON	123	87
	STA. 410+18.00		CONTRACT NO.	76601	
FED. ROAD DIST. NO.		ILLINOIS FED. AID PROJECT			

FILE: J:\JDO\10195 IL-08VVing I-55 Madison Bridge Repairs\Linengr\060-0195.dgn  
 USER: DCD  
 DATE: 06/22/2010 2:35:58

**LIN ENGINEERING, LTD.**  
Consulting Engineers  
Chatham, Illinois

DESIGNED: ESH	DRAWN: RH
CHECKED: MTH	CHECKED: MTH