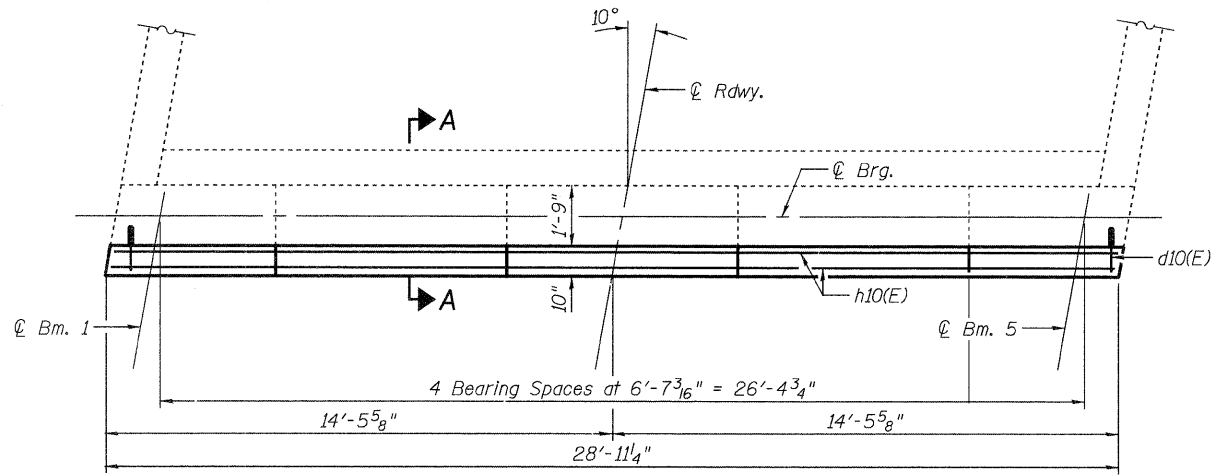
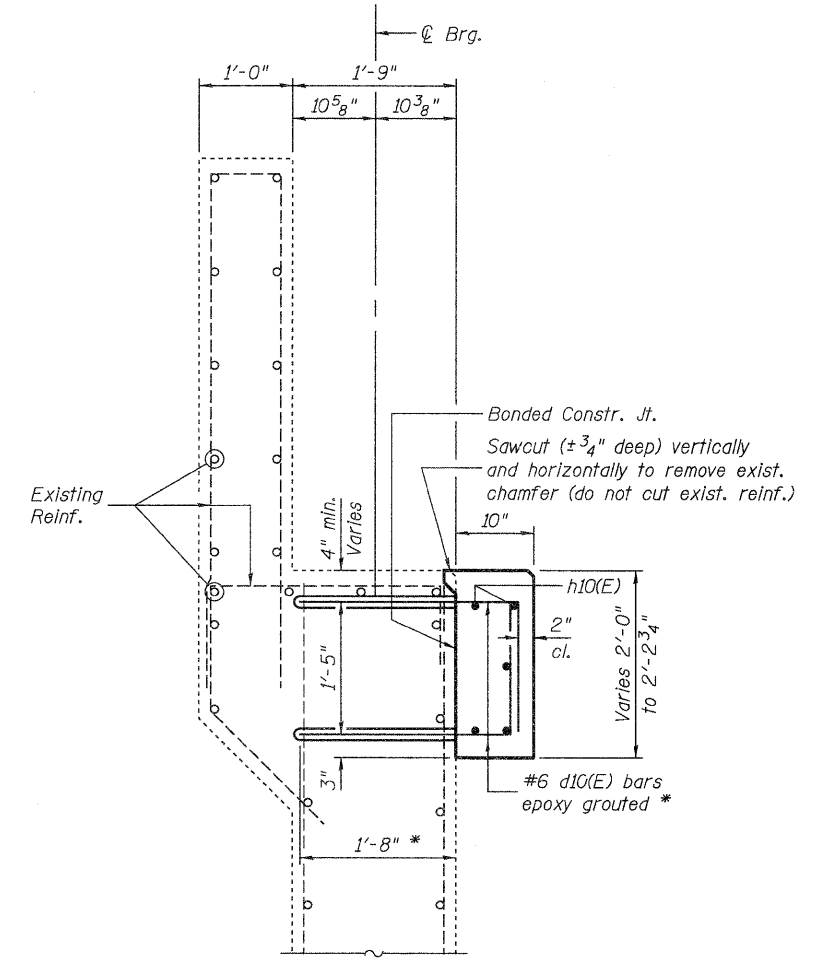
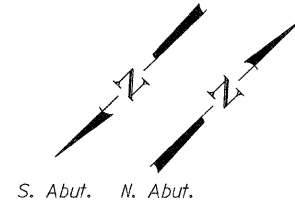


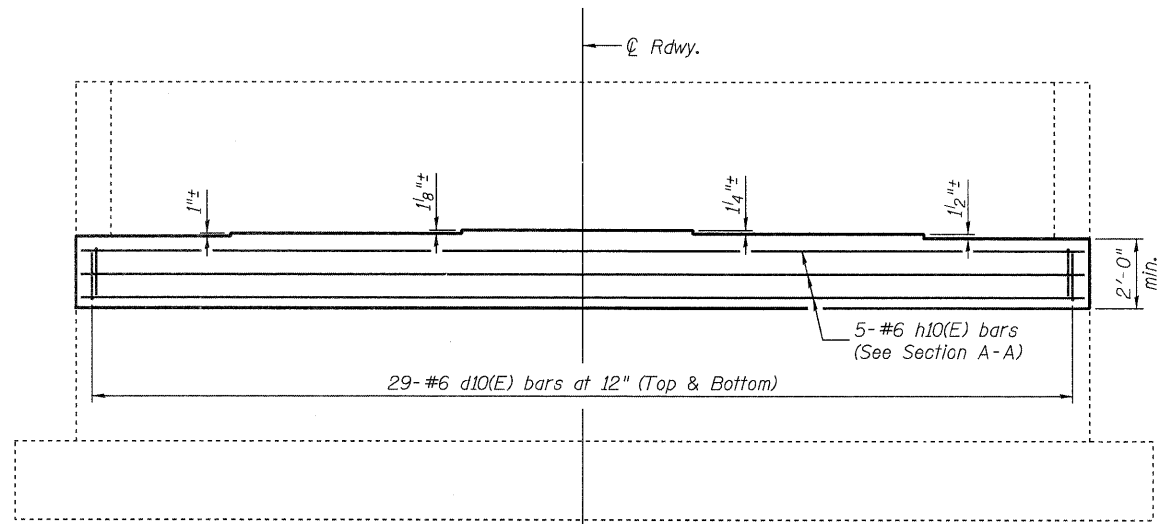
STATE OF ILLINOIS  
DEPARTMENT OF TRANSPORTATION



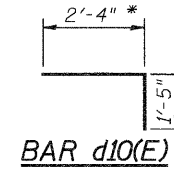
**PLAN OF CAP**  
(N. Abut. shown, S. Abut. similar)



**SECTION A-A**



**ELEVATION**



**BAR d10(E)**

**BILL OF MATERIAL**

Bar	No.	Size	Length	Shape	
d10(E)	58	#6	3'-9"	┌	
h10(E)	5	#6	28'-7"	—	
				N. Abut.	S. Abut.
Concrete Structures		Cu. Yd.	1.9	1.9	
Reinforcement Bars, Epoxy Coated		Pound	550	550	
Concrete Sealer		Sq. Ft.	75	75	

Reinforcement Bar list is for one Abutment only.  
Apply Concrete Sealer to existing and new beam seat areas (full length of cap).

\* Note:  
The length of the horizontal leg of the d10(E) bar allows for a concrete removal depth up to 5" plus an embedment of 1'-3". In non-repair areas, the embedment depth will be 1'-8".

**ABUTMENTS**  
**STRUCTURE NO. 060-0195**

SHEET 10 OF 10	F.A.I. RTE.	SECTION	COUNTY	TOTAL SHEETS	SHEET NO.
	55	60-3RS-1, 60-3HB,3HB-1XI	MADISON	123	92
STA. 410+18.00			CONTRACT NO. 76601		
FED. ROAD DIST. NO.		ILLINOIS FED. AID PROJECT			

**JD** Johnson, Depp & Quisenberry  
CONSULTING ENGINEERS  
Springfield, Illinois

DESIGNED: DCD	DRAWN: P. Ray
CHECKED: CMV	CHECKED: CMV/DCD

FILE: J:\JDD\10195 IL-08VV\*9 I-55 Madison Bridge Repair\3-Alhambrard\0600195-7660-010-abut2.dgn  
USER: DCD  
PRINT DATE: 06/22/2010 22:07:04  
SAVE DATE: 6/21/2010