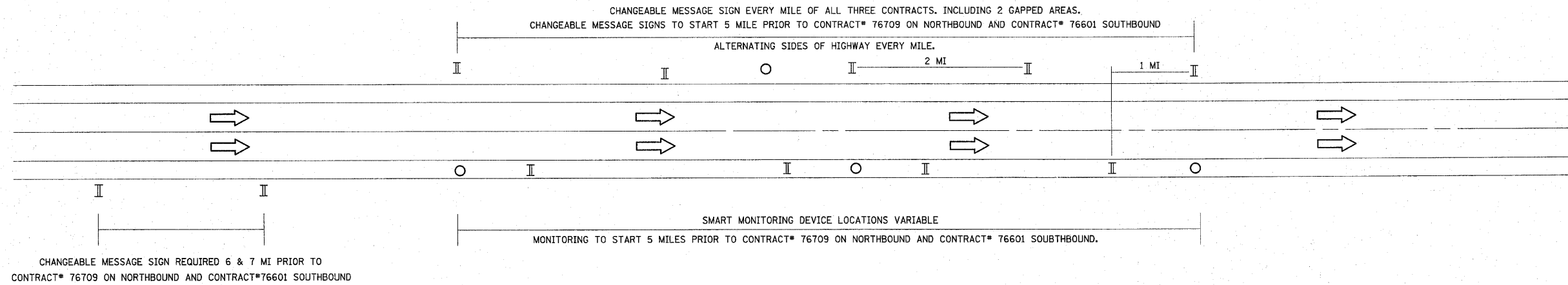


# TYPICAL SMART TRAFFIC MONITORING SYSTEM TO BE PLACED IN EACH DIRECTION



**NOTES:**

1. THREE CONTRACTS INCLUDE: 76601, 76C93, AND 76709.
2. TYPICAL DRAWING SHOWN ABOVE REPRESENTS NORTHBOUND AND SOUTHBOUND. LUMP SUM PAY ITEM REPRESENTS BOTH DIRECTIONS.
3. ACTUAL LOCATION OF SMART MONITORING DEVICES BASED ON MANUFACTURER'S SPECIFICATION AND "SMART TRAFFIC MONITORING SYSTEM" SPECIAL PROVISION.

**LEGEND**

- SMART MONITORING DEVICE LOCATION
- II CHANGEABLE MESSAGE SIGN

△ Added sheet 9-1-10

FILE NAME =	USER NAME = korlesol	DESIGNED - ---	REVISED - ---	STATE OF ILLINOIS DEPARTMENT OF TRANSPORTATION	SMART TRAFFIC MONITORING SYSTEM CONTRACTS NO. (76601, 76709, AND 76C93)	F.A.I. RTE.	SECTION	COUNTY	TOTAL SHEETS	SHEET NO.
cr:\pw_work\pwidot\karlesol\10283678\dfi	001a.dgn	DRAWN - ---	REVISED - ---		55	60-1,2,RS-2	MADISON	156	156B	
PLOT SCALE = 50,000 / IN.	CHECKED - ---	REVISED - ---	REVISED - ---		CONTRACT NO. 76C93					
PLOT DATE = 8/31/2010	DATE - ---	REVISED - ---	REVISED - ---		SCALE: _____ SHEET NO. ___ OF ___ SHEETS STA. _____ TO STA. _____		FED. ROAD DIST. NO. - [ILLINOIS] FED. AID PROJECT			