

F.A.I. RTE.	SECTION	COUNTY	TOTAL SHEETS	SHEET NO.
55	60-(1,2)RS-2	MADISON	*156	1
ILLINOIS CONTRACT NO. 76C93				

*156 + 3 = 159

FOR INDEX OF SHEETS, SEE SHEET NO. 2

STATE OF ILLINOIS
DEPARTMENT OF TRANSPORTATION
DIVISION OF HIGHWAYS

**PROPOSED
HIGHWAY PLANS**

FAI ROUTE 55 (I-55)
SECTION 60-(1,2)RS-2
PROJECT: ACIM-055-1(082)020
RUBBLIZING AND RESURFACING
MADISON COUNTY

C-98-034-09



James Paul Biggers
JAMES PAUL BIGGERS, P.E.

DATE 6/24/10

LICENSE EXPIRES 11/30/11

PLANS PREPARED BY:



JOHNSON, DEPP & QUISENBERRY
CONSULTING ENGINEERS

6450 South Sixth Street Road, Suite B Springfield, Illinois 62712
Phone: (217) 529-4534 Fax: (217) 529-8278

D-98-038-09



LOCATION OF SECTION INDICATED THUS: - [shaded box]

RURAL PRINCIPAL ARTERIAL (INTERSTATE)
F.A.I. 55 (I-55)
ADT (2009) = 29,700
PV = 76.1% SU = 3.0% MU = 20.9%
DESIGN SPEED = 70 MPH

STATE OF ILLINOIS
DEPARTMENT OF TRANSPORTATION
DIVISION OF HIGHWAYS

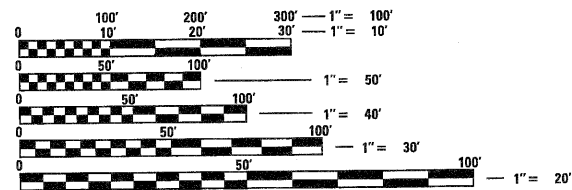
SUBMITTED June 25 2010

James Carmichael
DEPUTY DIRECTOR OF HIGHWAYS, REGION ENGINEER

August 13 2010
Scott E. Stitt, P.E.
ACTING ENGINEER OF DESIGN AND ENVIRONMENT

August 13 2010
Christine M. Reed
DIRECTOR OF HIGHWAYS, CHIEF ENGINEER

**PRINTED BY THE AUTHORITY
OF THE STATE OF ILLINOIS**

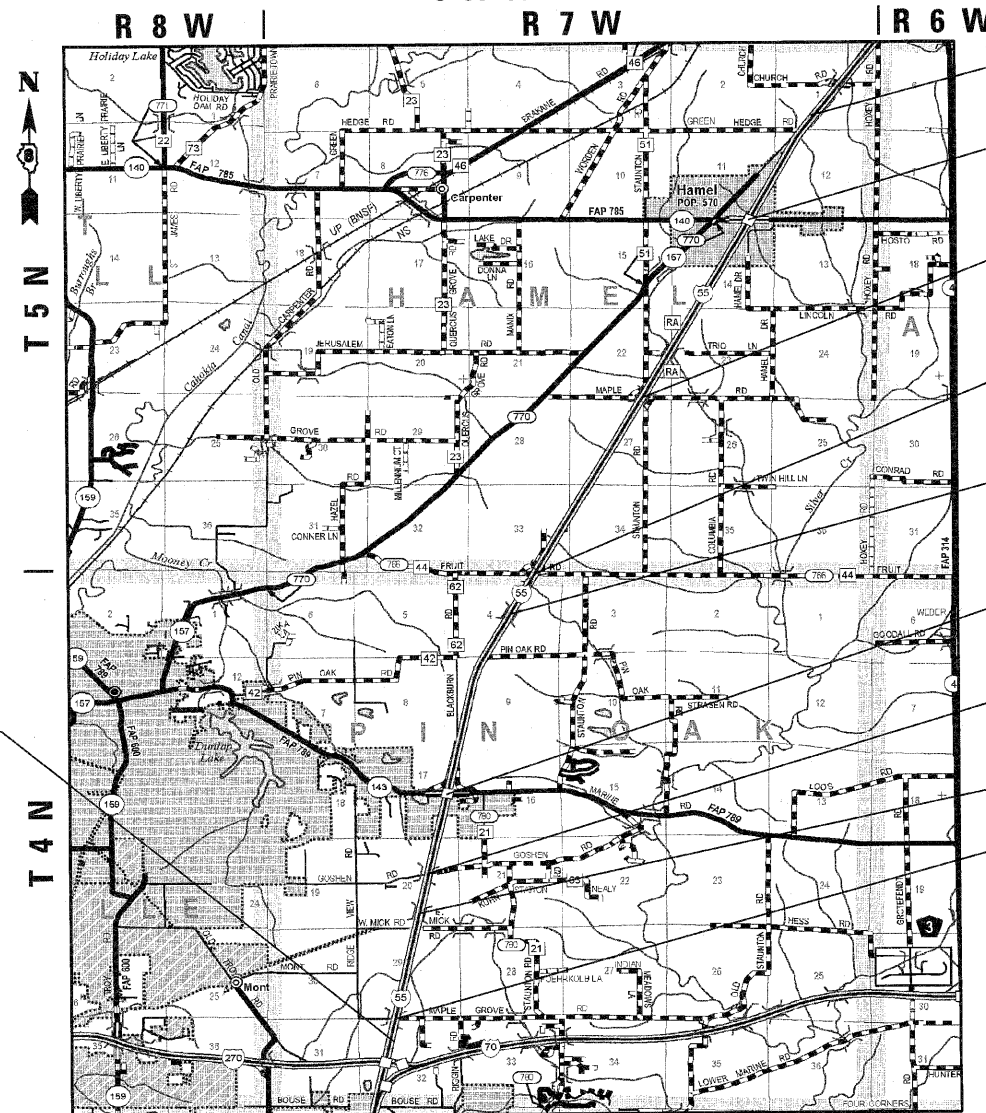


FULL SIZE PLANS HAVE BEEN PREPARED USING STANDARD ENGINEERING SCALES. REDUCED SIZED PLANS WILL NOT CONFORM TO STANDARD SCALES. IN MAKING MEASUREMENTS ON REDUCED PLANS, THE ABOVE SCALES MAY BE USED.

J.U.L.I.E.
JOINT UTILITY LOCATION INFORMATION FOR EXCAVATION
1-800-892-0123
OR 811

PROJECT ENGINEER: TIMOTHY PADGETT (618)346-3325
PROJECT MANAGER: TIMOTHY PADGETT (618)346-3325

CONTRACT NO. 76C93



BEGIN PROJECT
STA. 668+00

STA. 738+51.63
SN 060-0073

STA. 858+41.29
SN 060-0180

STA. 977+77.64
SN 060-0179

STA. 1002+99.01
SN 060-0002(SB) & 0003(NB)
BRIDGE RESURFACING OMISSION
STA. 1001+45 TO STA. 1003+72 N.B.
STA. 1002+24 TO STA. 1004+51 S.B.

STA. 1117+32.52
SN 060-0148

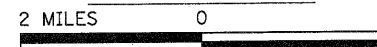
STA. 1166+35.82
SN 060-0178

STA. 1190+05.79
SN 060-0001

STA. 1253+65.74
SN 060-0177

END PROJECT
STA. 1263+59

LOCATION MAP



GROSS LENGTH = 59,559.00 FT. = 11.280 MILE
NET LENGTH = 59,332.00 FT. = 11.237 MILE

Rev. 9-1-10

INDEX OF SHEETS

1	COVER SHEET
2-3	INDEX OF SHEETS, HIGHWAY STANDARDS, GENERAL NOTES AND COMMITMENTS
4-7	SUMMARY OF QUANTITIES
8-11	PAVEMENT CORE RESULTS
12-16	TYPICAL SECTIONS
17-33	SCHEDULES OF QUANTITIES
34-36	TIES AND BENCHMARKS
37-89	PLAN AND PROFILE SHEETS
90-103	STAGES OF CONSTRUCTION AND TRAFFIC CONTROL
104-105	ALTERNATE ROUTE DETAILS
106-131	EROSION AND SEDIMENT CONTROL DETAILS
132-140	SIGN DETAILS
141-142	BOX CULVERT STA. 734+50
143-152	MISCELLANEOUS DETAILS
153-156	PIPE CROSS SECTIONS
156A-C	SMART WORK ZONE TRAFFIC CONTROL

HIGHWAY STANDARDS

000001-05	STANDARD SYMBOLS, ABBREVIATIONS AND PATTERNS
001001-02	AREAS OF REINFORCEMENT BARS
001006	DECIMALS OF AN INCH AND OF A FOOT
202001-01	EARTH MEDIAN DITCH CHECK
280001-05	TEMPORARY EROSION CONTROL SYSTEMS
420701-02	PAVEMENT FABRIC
421001-02	BAR REINFORCEMENT FOR CRC PAVEMENT
421101-07	24' CRC PAVEMENT
442101-07	CLASS B PATCHES
483001-04	PCC SHOULDER
542201-02	REINF. CONC. END SECT.'S FOR PIPE CULV. 15" THRU 36" DIA. SKEWED WITH RDWAY
542206-01	REINF. CONC. END SECT.'S FOR PIPE CULV. 42" THRU 60" DIA. SKEWED WITH RDWAY
542301-02	PRECAST REINFORCED CONCRETE FLARED END SECTION
542546-01	FLUSH INLET BOX FOR MEDIAN
542601-02	REINFORCED CONCRETE PIPE ELBOW
601001-03	SUB-SURFACE DRAINS
601101-01	CONCRETE HEADWALL FOR PIPE DRAIN
602306-03	INLET - TYPE B
602401-02	MANHOLE TYPE A
604001-03	FRAME AND LIDS TYPE 1
604106-01	MEDIAN INLET FOR 36' REINFORCED CONCRETE PIPE
630001-08	STEEL PLATE BEAM GUARDRAIL
630301-05	SHOULDER WIDENING FOR TYPE 1 (SPECIAL) GUARDRAIL TERMINALS
631011-06	TRAFFIC BARRIER TERMINAL, TYPE 2
631031-08	TRAFFIC BARRIER TERMINAL, TYPE 6
631033-03	TRAFFIC BARRIER TERMINAL, TYPE 6B
635001-01	DELINEATORS
635006-03	REFLECTOR AND TERMINAL MARKER PLACEMENT
635011-02	REFLECTOR MARKER AND MOUNTING DETAILS
642001-01	SHOULDER RUMBLE STRIPS
701101-02	OFF-RD OPERATIONS, MULTILANE, 15' TO 24" FROM PAVEMENT EDGE
701106-02	OFF-RD OPERATIONS, MULTILANE, MORE THAN 15' AWAY
701400-04	APPROACH TO LANE CLOSURE, FREEWAY/EXPRESSWAY
701401-05	LANE CLOSURE, FREEWAY/EXPRESSWAY
701406-05	LANE CLOSURE, FREEWAY/EXPRESSWAY, DAY OPERATIONS ONLY
701411-06	LANE CLOSURE, MULTILANE, AT ENTRANCE OR EXIT RAMP, FOR SPEEDS ≥ 45 MPH
701426-03	LANE CLOSURE, MULTILANE, INTERMITTENT OR MOVING OPER., FOR SPEEDS ≥ 45 MPH
701451-01	RAMP CLOSURE FREEWAY/EXPRESSWAY
701456	PARTIAL EXIT RAMP CLOSURE FREEWAY/EXPRESSWAY
701901-01	TRAFFIC CONTROL DEVICES
704001-06	TEMPORARY CONCRETE BARRIER
720001-01	SIGN PANEL MOUNTING DETAILS
720006-02	SIGN PANEL ERECTION DETAILS
720011-01	METAL, POSTS FOR SIGNS, MARKERS & DELINEATORS
728001-01	TELESCOPING STEEL SIGN SUPPORT
729001-01	APPLICATIONS OF TYPES A & B METAL POSTS (FOR SIGNS & MARKERS)
BLK - 1B-5	
701201-03	LANE CLOSURE, 2L, 2W, DAY ONLY, FOR SPEEDS ≥ 45 MPH

GENERAL NOTES

1. THE CONTRACTOR SHALL VERIFY ALL DIMENSIONS AND CONDITIONS IN THE FIELD PRIOR TO CONSTRUCTION AND ORDERING MATERIALS.
2. THE STANDARDS AND REVISION NUMBERS LISTED SHALL APPLY TO THIS PROJECT.
3. ILLINOIS STATE LAW REQUIRES A 48-HOUR NOTICE TO BE GIVEN TO UTILITIES BEFORE DIGGING. FIELD MARKING OF FACILITIES MAY BE OBTAINED BY CONTACTING J.U.L.I.E. OR FOR NON-MEMBERS, THE UTILITY COMPANY DIRECTLY. AGENCIES KNOWN TO HAVE FACILITIES WITHIN THE PROJECT AREA ARE AS FOLLOWS:

UTILITY CO.

- AMEREN IP
- AT&T ILLINOIS
- AT&T CORPORATION
- BOND MADISON WATER COMPANY
- BUCKEYE PARTNERS L.P.-WOOD RIVER PIPELINE
- CENTERPOINT ENERGY
- CHARTER COMMUNICATIONS, INC.
- CONSOLIDATED COMMUNICATIONS
- CITY OF EDWARDSVILLE
- VILLAGE OF HAMEL
- ILLINOIS AMERICAN WATER COMPANY
- VILLAGE OF LIVINGSTON
- MADISON TELEPHONE COMPANY
- MARATHON PIPE LINE LLC
- NORTHEAST CENTRAL COUNTY PUBLIC WATER DISTRICT
- PLAINS MARKETING, L.P.
- SOUTHWESTERN ELECTRIC COOPERATIVE, INC.
- THREE COUNTY PUBLIC WATER DISTRICT
- CITY OF TROY
- LEVEL 3 COMMUNICATIONS

TYPE

- GAS & ELECTRIC COMMUNICATIONS
- COMMUNICATIONS
- WATER PIPELINE
- PIPELINE
- CABLE TV
- COMMUNICATIONS
- SANITARY SEWER
- SANITARY SEWER WATER
- SANITARY SEWER COMMUNICATIONS
- PIPELINE
- WATER PIPELINE
- ELECTRIC
- WATER
- WATER & SANITARY SEWER COMMUNICATIONS

MEMBERS OF J.U.L.I.E. (800)-892-0123 ARE INDICATED BY •. NON J.U.L.I.E. MEMBERS MUST BE NOTIFIED INDIVIDUALLY.

4. "ROAD CONSTRUCTION AHEAD" SIGNS SHALL BE PLACED AT THE BEGINNING OF THE PROJECT AND ALL ENTRANCE RAMPS; COST TO BE INCLUDED WITH THE TRAFFIC CONTROL PAY ITEMS. ALL CONSTRUCTION SIGNS SHALL BE FLUORESCENT ORANGE AND 48" X 48". THE CONTRACTOR SHALL FURNISH AND INSTALL WOOD SIGN POST SUPPORTS IN ACCORDANCE WITH SECTION 730 OF THE STANDARD SPECIFICATIONS. HOWEVER, INSTALLATION BY METHOD "A" (ART. 730.04(a)) SHALL BE THE ONLY METHOD PERMITTED.

5. THE THICKNESS OF THE HMA MIXTURE SHOWN ON THE PLANS IS THE NOMINAL THICKNESS. DEVIATIONS FROM THE NOMINAL THICKNESS WILL BE PERMITTED WHEN SUCH DEVIATIONS OCCUR DUE TO IRREGULARITIES IN THE EXISTING SURFACE OR BASE ON WHICH THE HMA MIXTURE IS PLACED.

6. DROP-OFFS ADJACENT TO A MAINLINE EDGE OF PAVEMENT, DURING THE SHOULDER REMOVAL AND REPLACEMENT OPERATIONS OF THE PRE-STAGE CONSTRUCTION PHASE, SHALL BE PROTECTED WITH EXTENDED-HEIGHT CHANNELIZING DEVICES, WITH STEADY BURN LIGHTS, AT 100' SPACING. SINCE THESE DROP-OFFS ARE GREATER THAN 12 INCHES, BUT LESS THAN OR EQUAL TO 18 INCHES, THEY SHALL BE LIMITED TO 0.5 MILES IN LENGTH AND 48 HOURS DURATION.

DROP-OFFS ADJACENT TO A RAMP EDGE OF PAVEMENT, DURING THE EXCAVATION FOR CONCRETE SHOULDERS, SHALL BE PROTECTED BY PLACING EXTENDED-HEIGHT CHANNELIZING DEVICES, WITH STEADY BURN LIGHTS, AT 50' SPACING.

DROP-OFFS ADJACENT TO THE EDGE OF PAVEMENT OF THE MAINLINE OR A RAMP, DUE TO RESURFACING OPERATIONS DURING THE POST-STAGE CONSTRUCTION PHASE, SHALL BE PROTECTED BY PLACING "LOW SHOULDER" SIGNS AT TWO-MILE SPACING, WHEN THE DROP-OFF IS MORE THAN ONE INCH BUT LESS THAN OR EQUAL TO THREE INCHES.

7. THE FOLLOWING MIXTURE REQUIREMENTS ARE APPLICABLE FOR THIS PROJECT:

MIXTURE USE	SMA SURFACE	POLY BINDER*	BINDER/PATCHING
AC/PG	SBS PG 76-22	SBS PG 76-22	PG 64-22
RAP % (MAX)	SEE SPEC.	SEE SPEC.	SEE SPEC.
DESIGN AIR Voids	4.0% @ Ndes=80	4.0% @ Ndes=90	4.0% @ Ndes=90
MIX COMPOSITION	SEE SPEC.		
(GRADATION MIXTURE)		IL 19.0	IL 19.0
FRICITION AGGREGATE	SMA	MIXTURE "B"	MIXTURE "B"

MIXTURE USE	SHOULDERS ≥ 2.25"	SHOULDERS < 2.25"	BASE CSE. FOR STAGE CONST./ INCIDENTAL HMA
AC/PG	PG 64-22	PG 64-22	PG 64-22
RAP % (MAX)	See Contract RAP	See Contract RAP	SEE SPEC.
DESIGN AIR Voids	Special Provision	Special Provision	4.0% @ Ndes=90
MIX COMPOSITION	**2.0% @ Ndes=30	**2.0% @ Ndes=30	
(GRADATION MIXTURE)	NMAS 3/4"	NMAS 1/2"	IL 19.0
FRICITION AGGREGATE			MIXTURE "B"

- * 3" minimum top lift of Binder on rubblizing sections, 2.25" minimum top lift of Binder on resurfacing only sections.
- ** Top Lift Shoulders - Design this mix at 2.0% voids and add asphalt to reduce voids to 1.5%.

PLAN QUANTITIES FOR BITUMINOUS CONCRETE SURFACE COURSE ITEMS ARE CALCULATED USING A UNIT WEIGHT OF 112 LB/SQ YD/IN (59.8 KG/SQ M/25 mm THICKNESS).

8. A QUANTITY FOR CLASS 2 SEEDING, FERTILIZER AND MULCH METHOD 2, BASED ON A STRIP 15' WIDE, LEFT AND RIGHT OF THE MAINLINE, OUTSIDE SHOULDERS AND THE MEDIAN WIDTH 20' THROUGHOUT THE LIMITS OF THE PROJECT AND A STRIP 10' LEFT AND RIGHT OF THE RAMP SHOULDERS HAS BEEN INCLUDED IN THE PLANS TO BE APPLIED TO ALL DISTURBED AREAS.

ANY DISTURBANCE BEYOND THE ABOVE DESCRIBED LIMITS SHALL BE SEED, FERTILIZED, AND MULCHED PER SECTIONS 250 AND 251 OF THE STANDARD SPECIFICATIONS AND SHALL BE AT THE CONTRACTOR'S EXPENSE.

9. BEGINNING AND END STATIONS AS SHOWN IN THE PLANS FOR HTC AND MOW STRIP ARE APPROXIMATE. THE ENGINEER WILL DETERMINE THE EXACT LOCATION.

10. THE MINIMUM DEPTH OF THE LINE POST FOUNDATIONS SHALL BE 30".

11. THE LIMITS OF THE MOW STRIP SHALL BE THE SAME AS THE LIMITS OF THE HTC INCLUDING TERMINAL SECTIONS.

12. REFLECTORS FOR HTC SHALL BE PROVIDED AND INSTALLED PER MANUFACTURER'S SPECIFICATIONS FOR THE TYPE OF HTC BARRIER USED. COST SHALL BE INCLUDED IN HIGH TENSION CABLE MEDIAN BARRIER. MAXIMUM SPACING SHALL BE 50' OR AS DIRECTED BY THE ENGINEER.

13. HTC SYSTEM SHALL BE CHOSEN FROM THE DEPARTMENT'S APPROVED LIST TO BE USED WHERE MEDIAN SLOPES ARE STEEPER THAN 1:6 AND AS STEEP AS 1:4.

14. POST SPACING SHALL BE REDUCED IN AREAS WHERE A MEDIAN HAZARD IS PRESENT (ie. MEDIAN PIER) AS DIRECTED BY THE ENGINEER. REDUCED POST SPACING SHALL NOT BE ANY SMALLER THAN THE MINIMUM SPACING ALLOWED PER MANUFACTURER'S SPECIFICATIONS. NO ADDITIONAL COMPENSATION WILL BE ALLOWED FOR MODIFYING POST SPACING.

15. ALL WORK REQUIRED FOR THE REMOVAL OF THE PORTION OF THE EXISTING HMA MOW STRIP, INCLUDING SAW CUTTING, SHALL BE INCLUDED IN THE COST FOR PAVED SHOULDER REMOVAL, AS SHOWN IN THE PLANS.

16. TWO WEEKS PRIOR TO PROJECT START-UP, CHANGEABLE MESSAGE SIGNS SHALL BE PLACED AT THE FOLLOWING LOCATIONS AS DIRECTED BY THE ENGINEER:

I-55 NORTH OF IL 4	IL 143 WEST OF I-55	NORTH OF THE SOUTHBOUND REST AREA
IL 4 WEST OF I-55	IL 143 EAST OF I-55	SOUTH OF THE NORTHBOUND REST AREA
IL 4 EAST OF I-55	I-270 WEST OF 3I	
IL 140 WEST OF I-55	I-70 EAST OF 3I	
IL 140 EAST OF I-55	I-55 SOUTH OF 3I	

THE CONTRACTOR SHALL MODIFY THE MESSAGE ON EACH SIGN AS DIRECTED BY THE ENGINEER, AS NEEDED.

THE CONTRACTOR SHALL BE AWARE THAT THE MESSAGE BOARDS MAY REQUIRE RELOCATION THROUGHOUT THE DURATION OF THE PROJECT WITH NO ADDITIONAL COMPENSATION BEING ALLOWED FOR THE RELOCATION.

I-55	RAMP
RUBBLIZE	RESURFACING
2" SMA	2" SMA
3" POLY BIND.	2.25" POLY BIND.
2.25" - 11" BIND.	2.25" - 4.25" BIND.

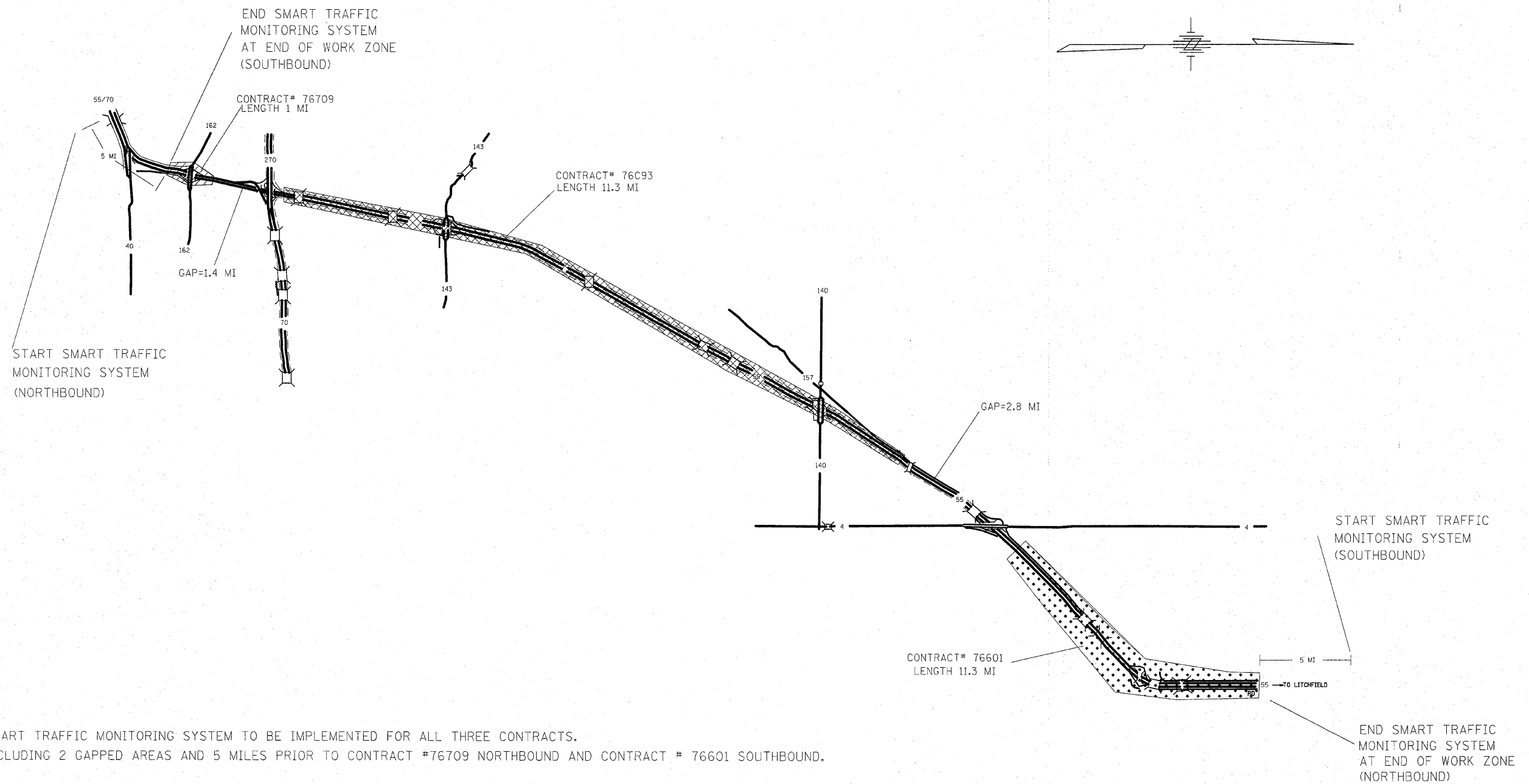
SUMMARY OF QUANTITIES

SUMMARY OF QUANTITIES			TOTAL QUANTITIES	CONSTRUCTION TYPE CODE			SUMMARY OF QUANTITIES			TOTAL QUANTITIES	CONSTRUCTION TYPE CODE		
CODE NO	ITEM	UNIT		1000	100% STATE	-----	CODE NO	ITEM	UNIT		1000	100% STATE	-----
Z0030260	IMPACT ATTENUATORS, TEMPORARY (FULLY REDIRECTIVE, NARROW), TEST LEVEL 3	EACH	5	5									
Z0030330	IMPACT ATTENUATORS, RELOCATE (FULLY REDIRECTIVE), TEST LEVEL 3	EACH	5	5									
Z0034105	MATERIAL TRANSFER DEVICE	TON	95047	95047									
Z0055605	RUBBLIZING PORTLAND CEMENT CONCRETE PAVEMENT	SQ YD	287602	287602									
Z0075310	TIE BARS 3/4"	EACH	1200	1200									
Z0076600	TRAINEES	HOURL	<del style="text-align: center;">2500	<del style="text-align: center;">2500									
X8570000	SMART TRAFFIC MONITORING SYSTEM	L SUM	<del style="text-align: center;">1	<del style="text-align: center;">1									

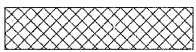

© Y080

Rev. 9-1-10

CONTRACT NO. 76C93



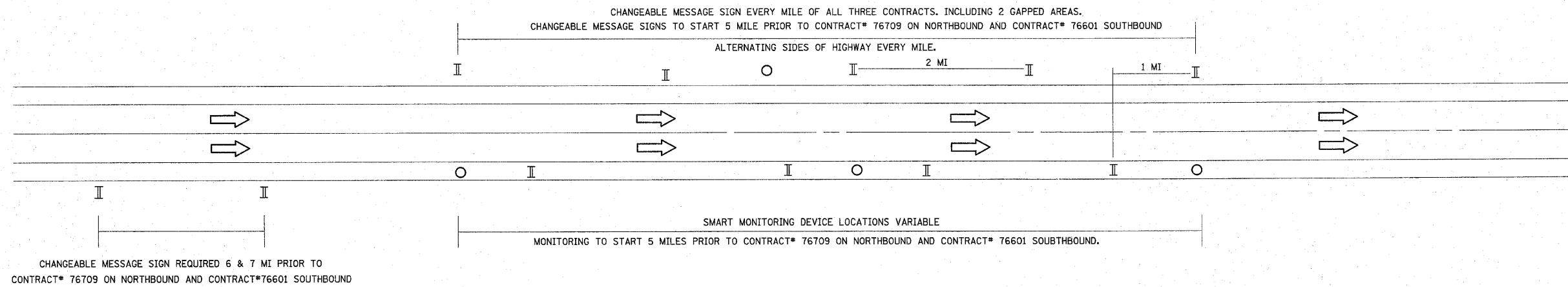
SMART TRAFFIC MONITORING SYSTEM TO BE IMPLEMENTED FOR ALL THREE CONTRACTS.
 INCLUDING 2 GAPPED AREAS AND 5 MILES PRIOR TO CONTRACT #76709 NORTHBOUND AND CONTRACT # 76601 SOUTHBOUND.

-  CONTRACT#76709
-  CONTRACT#76C93
-  CONTRACT#76601

Added Sheet 9-1-10

FILE NAME = c:\pwork\pwork\kar-lasal\d0203678\dfi:021a.dgn	USER NAME = kar-lasal	DESIGNED - ----	REVISED - ----	STATE OF ILLINOIS DEPARTMENT OF TRANSPORTATION	SMART TRAFFIC MONITORING SYSTEM CONTRACTS NO. (76601, 76709, AND 76C93)	F.A.I. RTE.	SECTION	COUNTY	TOTAL SHEETS	SHEET NO.
PLOT SCALE = 50,000' / IN.	CHECKED - ----	REVISED - ----	55			60-11,21RS-2	MADISON	156	156A	
PLOT DATE = 8/31/2010	DATE - ----	REVISED - ----	CONTRACT NO. 76C93							
						SCALE: N/A	SHEET NO. ___ OF ___ SHEETS		STA. _____ TO STA. _____	

TYPICAL SMART TRAFFIC MONITORING SYSTEM TO BE PLACED IN EACH DIRECTION



NOTES:

1. THREE CONTRACTS INCLUDE: 76601, 76C93, AND 76709.
2. TYPICAL DRAWING SHOWN ABOVE REPRESENTS NORTHBOUND AND SOUTHBOUND. LUMP SUM PAY ITEM REPRESENTS BOTH DIRECTIONS.
3. ACTUAL LOCATION OF SMART MONITORING DEVICES BASED ON MANUFACTURER'S SPECIFICATION AND "SMART TRAFFIC MONITORING SYSTEM" SPECIAL PROVISION.

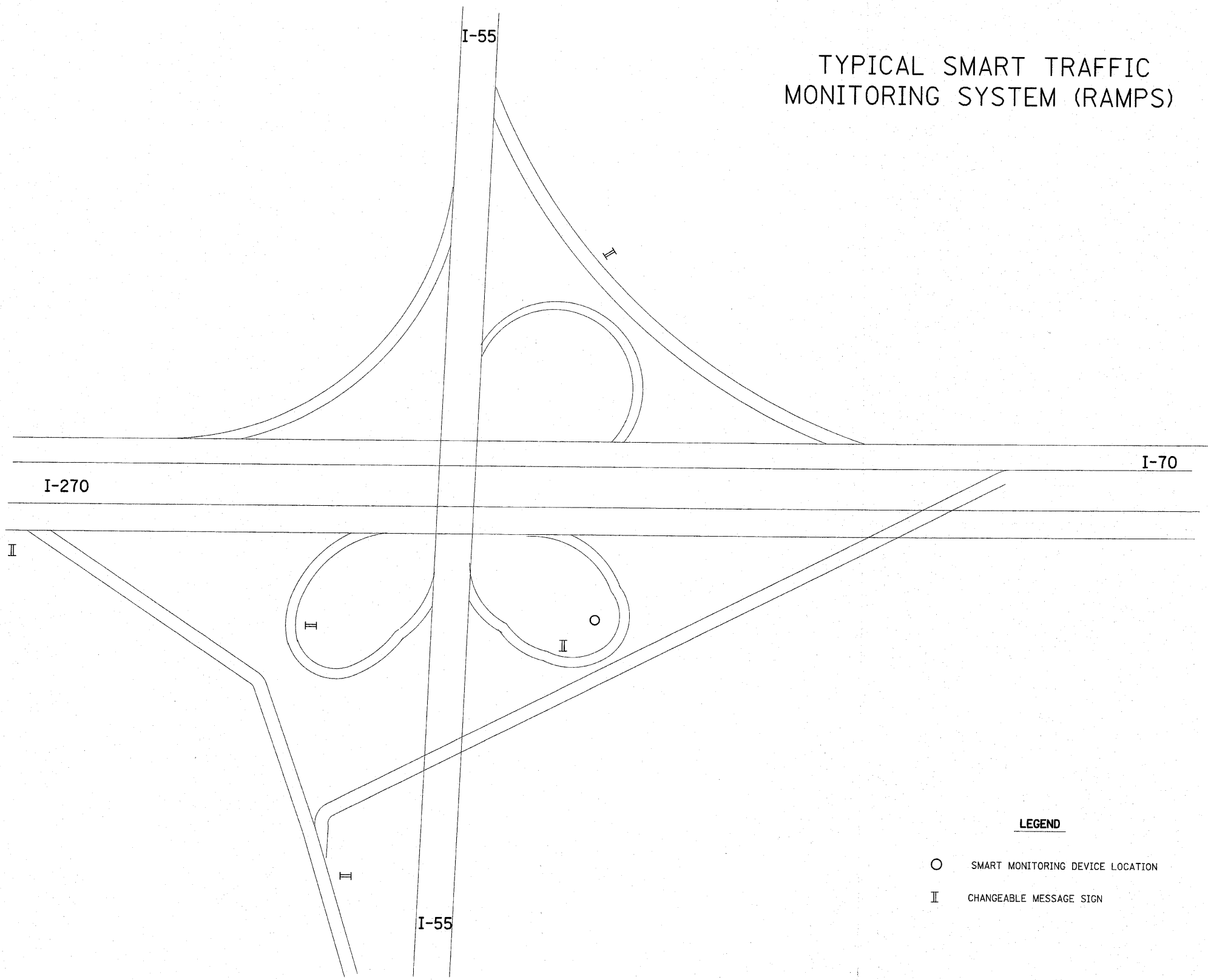
LEGEND

- SMART MONITORING DEVICE LOCATION
- II CHANGEABLE MESSAGE SIGN

△ Added sheet 9-1-10

FILE NAME =	USER NAME = korlesol	DESIGNED - ---	REVISED - ---	STATE OF ILLINOIS DEPARTMENT OF TRANSPORTATION	SMART TRAFFIC MONITORING SYSTEM CONTRACTS NO. (76601, 76709, AND 76C93)	F.A.I. RTE.	SECTION	COUNTY	TOTAL SHEETS	SHEET NO.	
cr:\pw_work\pwidot\karlesol\10283678\dfi	001a.dgn	DRAWN - ---	REVISED - ---			55	60-1,2,RS-2	MADISON	156	156B	
PLOT SCALE = 50,000 / IN.	CHECKED - ---	REVISED - ---	REVISED - ---			CONTRACT NO. 76C93					
PLOT DATE = 8/31/2010	DATE - ---	REVISED - ---	REVISED - ---			FED. ROAD DIST. NO. - [ILLINOIS] FED. AID PROJECT					
				SCALE: _____ SHEET NO. ___ OF ___ SHEETS STA. _____ TO STA. _____							

TYPICAL SMART TRAFFIC MONITORING SYSTEM (RAMPS)



LEGEND

- SMART MONITORING DEVICE LOCATION
- II CHANGEABLE MESSAGE SIGN

FILE NAME =	USER NAME = karlesal	DESIGNED -	REVISED -	STATE OF ILLINOIS DEPARTMENT OF TRANSPORTATION	TYPICAL SMART TRAFFIC MONITORING SYSTEM (RAMPS)	F.A.I. RTE.	SECTION	COUNTY	TOTAL SHEETS	SHEET NO.
ct:\pw_work\p\idot\karlesal\0203678\df11001a.dgn		DRAWN -	REVISED -			55	60-(1,2)RS-2	MADISON	156	156C
PLOT SCALE = 50.000' / IN.		CHECKED -	REVISED -			CONTRACT NO. 76C93				
PLOT DATE = 8/31/2010		DATE -	REVISED -			FED. ROAD DIST. NO. ILLINOIS FED. AID PROJECT				
SCALE: _____ SHEET NO. ___ OF ___ SHEETS STA. _____ TO STA. _____						<i>Added Sheet 9-1-10</i>				