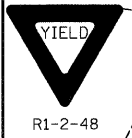
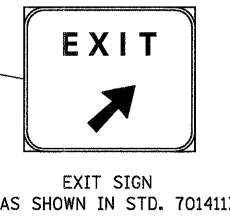
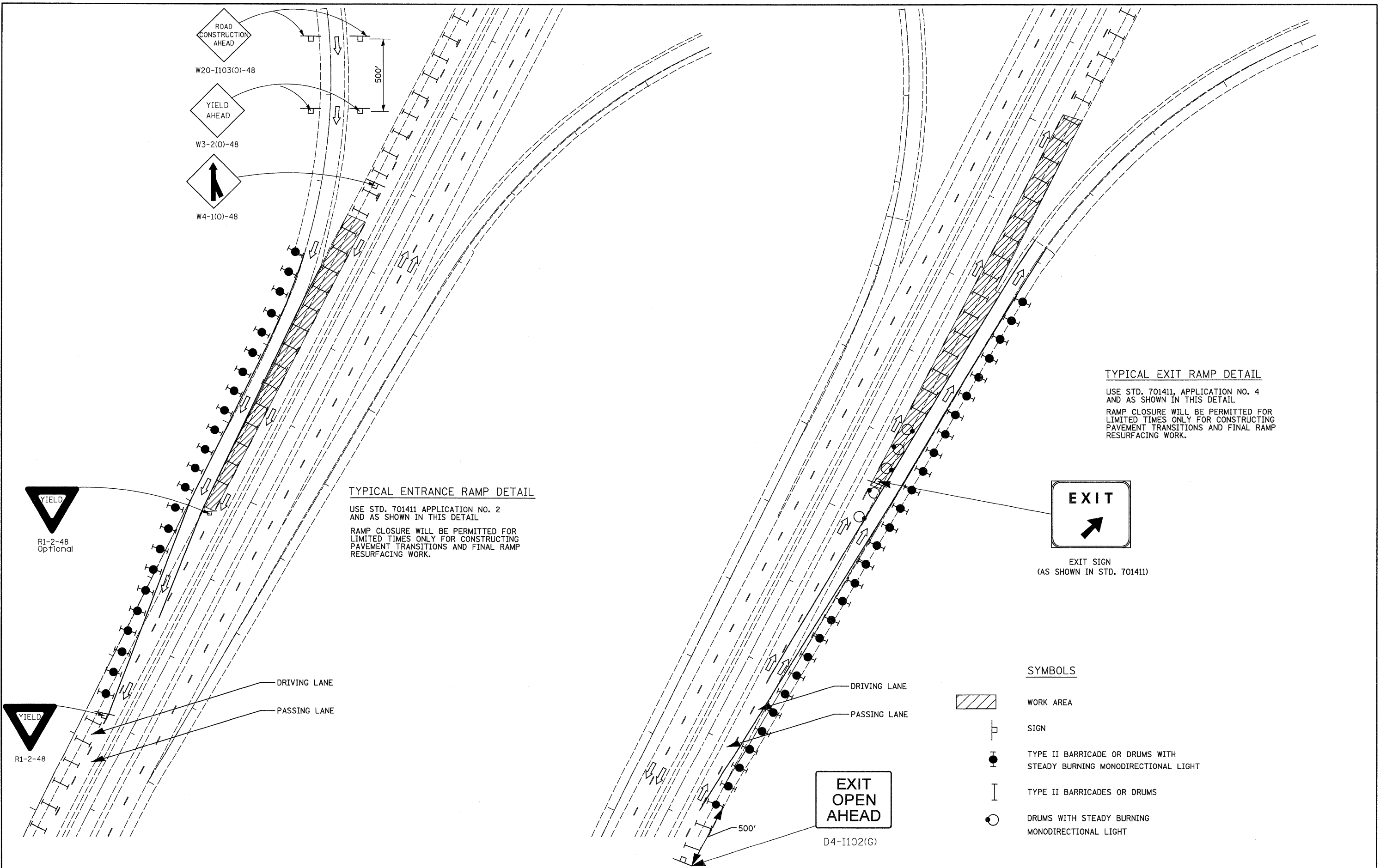


**TYPICAL EXIT RAMP DETAIL**  
 USE STD. 701411, APPLICATION NO. 4  
 AND AS SHOWN IN THIS DETAIL  
 RAMP CLOSURE WILL BE PERMITTED FOR  
 LIMITED TIMES ONLY FOR CONSTRUCTING  
 PAVEMENT TRANSITIONS AND FINAL RAMP  
 RESURFACING WORK.

**TYPICAL ENTRANCE RAMP DETAIL**  
 USE STD. 701411 APPLICATION NO. 2  
 AND AS SHOWN IN THIS DETAIL  
 RAMP CLOSURE WILL BE PERMITTED FOR  
 LIMITED TIMES ONLY FOR CONSTRUCTING  
 PAVEMENT TRANSITIONS AND FINAL RAMP  
 RESURFACING WORK.



- SYMBOLS**
- WORK AREA
  - SIGN
  - TYPE II BARRICADE OR DRUMS WITH STEADY BURNING MONODIRECTIONAL LIGHT
  - TYPE II BARRICADES OR DRUMS
  - DRUMS WITH STEADY BURNING MONODIRECTIONAL LIGHT



FILE NAME = ...oaddd\4876e93-shr-detail1.dgn	USER NAME = SJS	DESIGNED -	REVISED -	<b>STATE OF ILLINOIS DEPARTMENT OF TRANSPORTATION</b>	<b>TYPICAL ENTRANCE AND EXIT RAMP DETAILS - STEP 2</b>			F.A.I. RTE. 55	SECTION 60-(1,2RS--2)	COUNTY MADISON	TOTAL SHEETS 156	SHEET NO. 103
	PLOT SCALE = 50.0000' / IN.	DRAWN - JJS	REVISED -		SCALE: N.T.S.	SHEET NO. 1 OF 1 SHEETS	STA.	TO STA.	CONTRACT NO. 76C93			
	PLOT DATE = 06/23/2010 15:34:44	CHECKED - MTM	REVISED -		ILLINOIS FED. AID PROJECT							
		DATE - JUNE 2010	REVISED -									