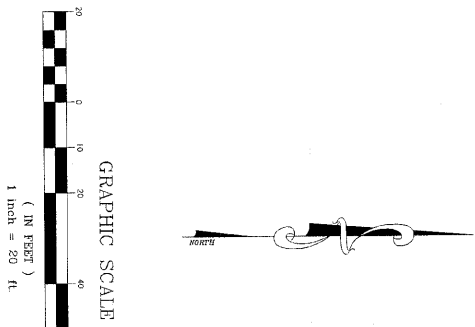
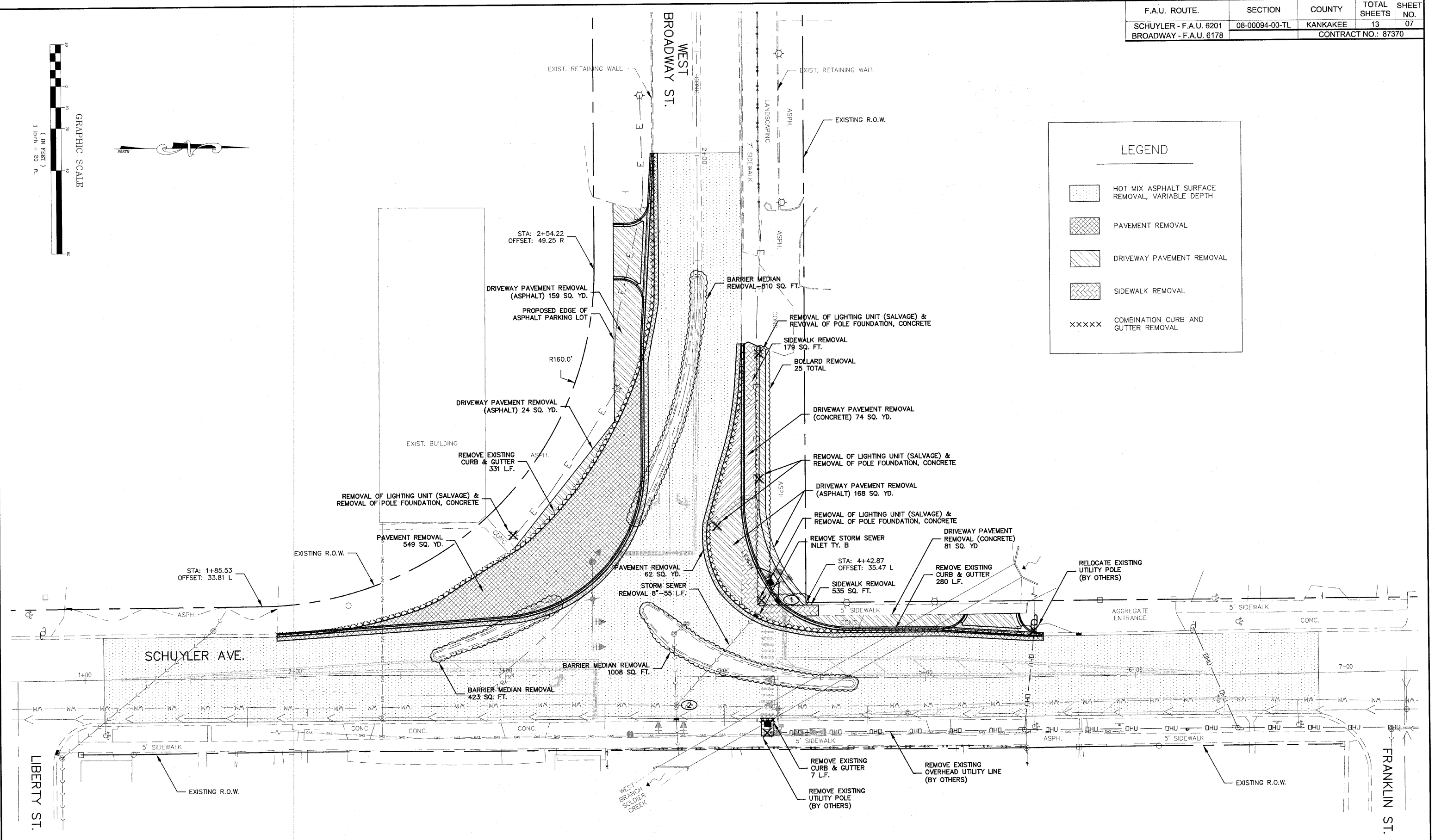


F.A.U. ROUTE.	SECTION	COUNTY	TOTAL SHEETS	SHEET NO.
SCHUYLER - F.A.U. 6201	08-00094-00-TL	KANKAKEE	13	07
BROADWAY - F.A.U. 6178				CONTRACT NO.: 87370



LEGEND	
	HOT MIX ASPHALT SURFACE REMOVAL, VARIABLE DEPTH
	PAVEMENT REMOVAL
	DRIVEWAY PAVEMENT REMOVAL
	SIDEWALK REMOVAL
	COMBINATION CURB AND GUTTER REMOVAL



**MGA**  
 240 N. Industrial Drive  
 Bradley, Illinois 60915  
 815-939-4921  
 FAX: 815-939-9810

**M. GINGERICH, GEREUX**  
 ASSOCIATES

REVISIONS		
DATE	BY	DESCRIPTION
07-08-2010	JWG	PER IDOT REVIEW

ILLINOIS DEPARTMENT OF TRANSPORTATION  
 SAFE ROUTES TO SCHOOLS  
 BROADWAY & SCHUYLER INTERSECTION SIGNALS

PLAN VIEW - REMOVALS

SCALE: 1" = 20'  
 DATE: 12/21/08

DRAWN BY: JWG  
 CHECKED BY: