

F.A. RTE.	SECTION	COUNTY	TOTAL SHEETS	SHEET NO.
	08-00032-00-SW	FULTON	16	1
ILLINOIS CONTRACT NO. 89569				

INDEX OF SHEETS

- 1 COVER SHEET
- 2 GENERAL NOTES, SUMMARY OF QUANTITIES, SCHEDULE OF QUANTITIES
- 3 TYPICAL SECTIONS
- 4 ALIGNMENT, TIES, AND BENCHMARKS
- 5-8 PLAN AND PROFILE
- 9 VEHICLE CONTROL BOLLARD DETAIL
- 10-16 CROSS SECTIONS

HIGHWAY STANDARDS

- 000001-05 STANDARD SYMBOLS, ABBREVIATIONS AND PATTERNS
- 001006 DECIMAL OF AN INCH AND OF A FOOT
- 424001-05 CURB RAMPS FOR SIDEWALKS
- 606001-04 CONCRETE CURB TYPE B AND COMBINATION CONCRETE CURB AND GUTTER
- 701001-02 OFF-RD OPERATIONS, 2L, 2W, MORE THAN 15' (4.5m) AWAY
- 701006-03 OFF-RD OPERATIONS, 2L, 2W, 15' (4.5m) TO 24" (600 mm) FROM PAVEMENT EDGE
- 701011-02 OFF-RD MOVING OPERATIONS, 2L, 2W, DAY ONLY
- 701301-03 LANE CLOSURE, 2L, 2W, SHORT TIME OPERATIONS
- 701501-05 URBAN LANE CLOSURE, 2L, 2W, UNDIVIDED
- 701801-04 LANE CLOSURE MULTILANE 1W OR 2W CROSSWALK OR SIDEWALK CLOSURE
- 701901-01 TRAFFIC CONTROL DEVICES

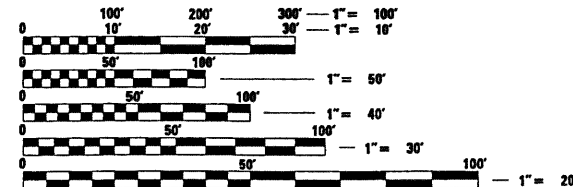
ENGINEERS SIGNATURE BOX

DATE SIGNED: 7/13/10
 JEFFRY D. SPILLER, P.E.
 I.L. REG. NO. 062-057630
 EXP. DATE: 11/30/2011

PREPARED BY:



7615 NORTH HARKER DRIVE
 PEORIA, ILLINOIS 61615
 TEL 309-693-7615
 FAX 309-693-7616
 CONTACT: GEORGE MERKLE



FULL SIZE PLANS HAVE BEEN PREPARED USING STANDARD ENGINEERING SCALES. REDUCED SIZED PLANS WILL NOT CONFORM TO STANDARD SCALES. IN MAKING MEASUREMENTS ON REDUCED PLANS, THE ABOVE SCALES MAY BE USED.

J.U.L.I.E.
 JOINT UTILITY LOCATION INFORMATION FOR EXCAVATION
 1-800-892-0123
 OR 811

PROJECT ENGINEER GEORGE MERKLE, P.E.
 PROJECT MANAGER RICK ANDERSON, P.E.

CONTRACT NO. 89569

CATALOG NO. 034403-00D

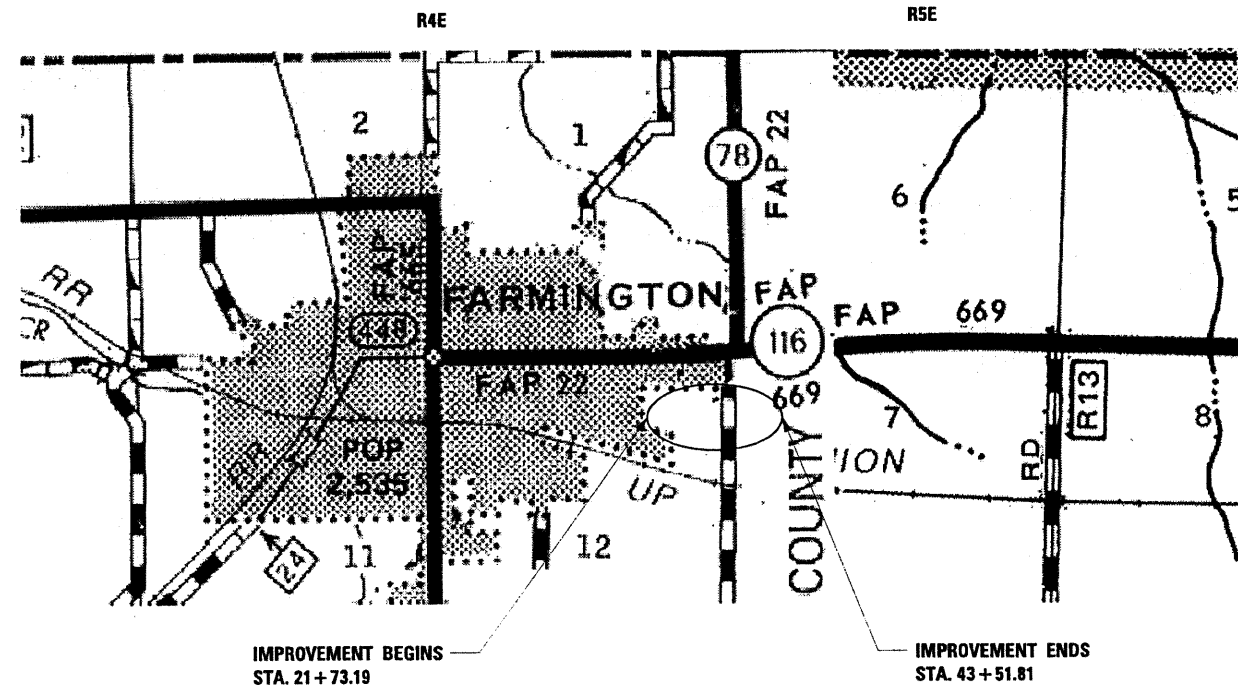
STATE OF ILLINOIS
 DEPARTMENT OF TRANSPORTATION

SAFE ROUTES TO SCHOOL

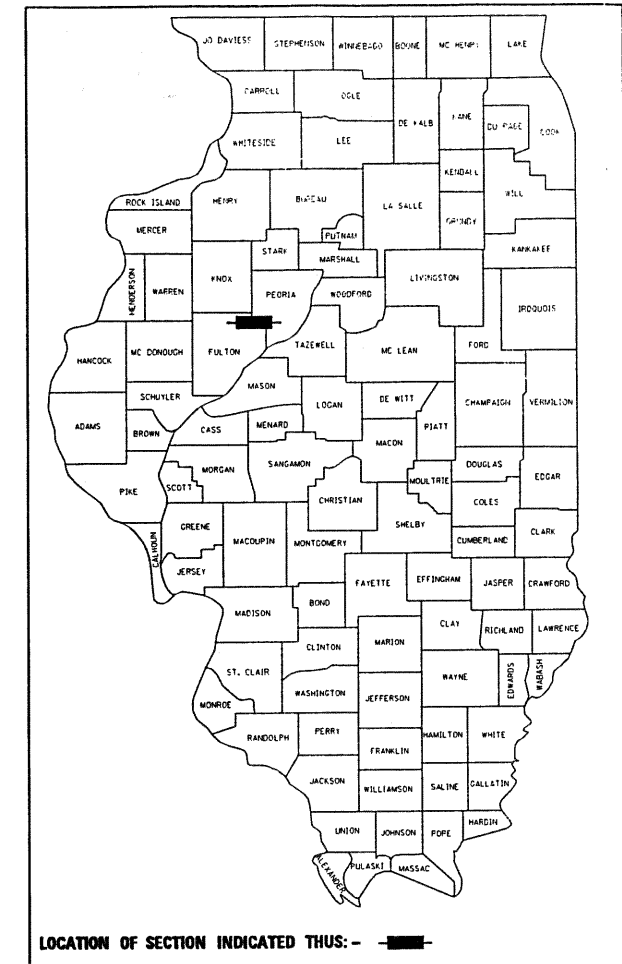
**PROPOSED
 HIGHWAY PLANS
 FOR LOCAL IMPROVEMENT**

WILSON STREET
 CITY OF FARMINGTON
 SECTION 08-00032-00-SW
 PROJECT SRTS-4008(090)
 FULTON / PEORIA COUNTIES
 JOB NO. C-40-033-08

PROJECT DESCRIPTION: CONSTRUCTION OF MULTI-USE PATH FROM JACOB'S PARK TO FARMINGTON SCHOOL



GROSS LENGTH = 2178.62 FT. = 0.413 MILE
 NET LENGTH = 2129.82 = 0.403 MILE



N
 4
 T&N
 4th P.M.

STATE OF ILLINOIS
 DEPARTMENT OF TRANSPORTATION
 DIVISION OF HIGHWAYS

APPROVED 07/09/2010 20
 Cyril Strubough
 CITY OF FARMINGTON

PASSED 07/20/2010 20
 Joseph E. Cravens
 DISTRICT FOUR ENGINEER OF LOCAL ROADS AND STREETS

RELEASED FOR BID BASED ON LIMITED REVIEW
 7/10 2010
 DEPUTY DIRECTOR OF HIGHWAYS, REGION THREE ENGINEER

**PRINTED BY THE AUTHORITY
 OF THE STATE OF ILLINOIS**

GENERAL NOTES

1. THE CONTRACTOR SHALL BE RESPONSIBLE FOR HAVING THE UTILITY COMPANIES LOCATE THEIR FACILITIES ON SITE PRIOR TO ANY CONSTRUCTION AND WILL BE HELD RESPONSIBLE FOR THE MAINTENANCE AND PRESERVATION OF THEIR FACILITIES. THE CONTRACTOR, ON SITE, SHALL DETERMINE THE EXACT LOCATIONS OF THE UTILITIES. THE CONTRACTOR SHALL CALL J.U.L.I.E. @ 1-800-892-0123 FOR UTILITY LOCATIONS.
2. THE CONTRACTOR WILL BE RESPONSIBLE FOR REPAIRS TO ANY UTILITY LINES AND EXISTING IMPROVEMENTS TO REMAIN THAT ARE DAMAGED AS A RESULT OF THE WORK.
3. ADJUSTMENTS OF PROPOSED GRADES TO MATCH EXISTING ENTRANCES OR OTHER FIELD CONDITIONS MAY BE REQUIRED AS DIRECTED BY THE ENGINEER.
4. ACCESS SHALL BE MAINTAINED TO ALL PROPERTIES DURING CONSTRUCTION.
5. THE WORK AREA SHALL BE POSITIVELY DRAINED DURING CONSTRUCTION. FINAL GRADES SHALL BE PROTECTED AGAINST DAMAGE FROM EROSION, SEDIMENTATION, AND TRAFFIC.
6. WHERE SECTION OR SUBSECTION MONUMENTS ARE ENCOUNTERED, THE ENGINEER SHALL BE NOTIFIED BEFORE SUCH MONUMENTS ARE REMOVED. THE CONTRACTOR SHALL PROTECT AND CAREFULLY PRESERVE ALL PROPERTY MARKERS AND MONUMENTS UNTIL THE OWNER, AN AUTHORIZED SURVEYOR OR AGENT HAS WITNESSED OR OTHERWISE REFERENCED THEIR LOCATION.
7. THE CONTRACTOR SHALL FIELD VERIFY ALL DIMENSIONS AND EXISTING CONDITIONS PRIOR TO CONSTRUCTION AND NOTIFY THE ENGINEER OF ANY DISCREPANCY IMMEDIATELY.
8. THE FOLLOWING MIXTURE REQUIREMENTS ARE APPLICABLE FOR THIS PROJECT:

MIXTURE USE(S):	MULTI-USE PATH
AC/PG:	PG 64-22
RAP % (MAX)	25%
DESIGN AIR VOIDS:	3.0% @ Ndes = 30
MIXTURE COMP: (GRADATION MIX)	IL 9.5L
FRICTION AGGREGATE:	MIXTURE C

••IF THE RAP OPTION IS SELECTED, THE ASPHALT CEMENT GRADE MAY NEED TO BE ADJUSTED; THIS WILL BE DETERMINED BY THE ENGINEER.

SUMMARY OF QUANTITIES		UNIT	584-13
CODE NO.	ITEM		
20200100	EARTH EXCAVATION	CU YD	130
20400800	FURNISHED EXCAVATION	CU YD	7
25000200	SEEDING, CLASS 2	ACRE	0.3
25000400	NITROGEN FERTILIZER NUTRIENT	POUND	26.2
25000500	PHOSPHORUS FERTILIZER NUTRIENT	POUND	26.2
25000600	POTASSIUM FERTILIZER NUTRIENT	POUND	26.2
25100115	MULCH, METHOD 2	ACRE	0.3
35100100	AGGREGATE BASE COURSE, TYPE A	TON	253
40603305	HOT-MIX ASPHALT SURFACE COURSE, MIX "C", N30	TON	223
42400100	PORTLAND CEMENT CONCRETE SIDEWALK 4 INCH	SQ FT	1957
42400800	DETECTABLE WARNINGS	SQ FT	36
X0322494	CURB CUT	FOOT	15
XX002202	VEHICLE CONTROL BOLLARDS	EACH	3
67100100	MOBILIZATION	LSUM	1

SCHEDULE OF QUANTITIES

35100100 AGGREGATE BASE COURSE, TYPE A	
LOCATION	TON
STA. 21+73.19 TO STA. 35+91.76	226.6
STA. 36+40.57 TO STA. 37+15.80	25.7
TOTAL	252.4

40603305 HOT-MIX ASPHALT SURFACE COURSE, MIX "C", N30	
LOCATION	TON
STA 21+73.19 TO STA 35+91.76	211.2
STA 36+40.57 TO STA 37+15.80	11.0
TOTAL	222.2

42400100 PORTLAND CEMENT CONCRETE SIDEWALK 4 INCH	
LOCATION	SQ FT
STA 37+15.80 TO STA 43+13.97	1857.8
STA 43+18.87 TO STA 43+51.81	99.2
TOTAL	1957.0

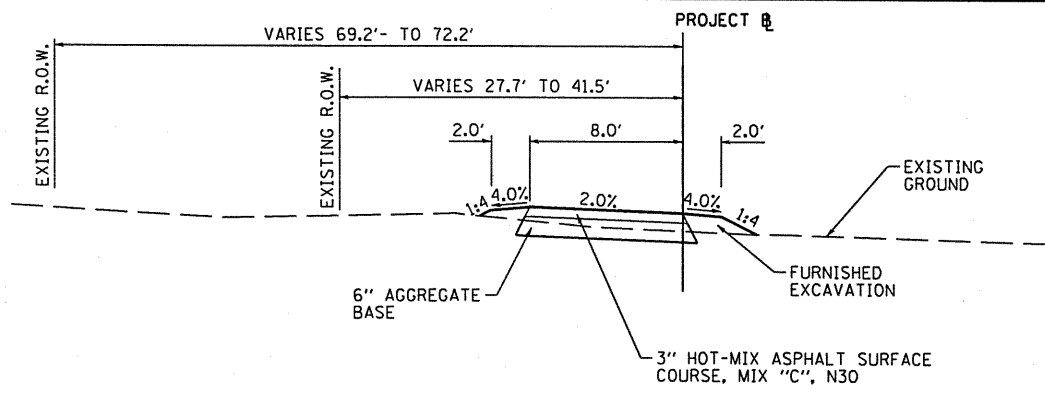
42400800 DETECTABLE WARNINGS	
LOCATION	SQ FT
STA. 21+73.14 TO STA. 21+75.19	12
STA. 35+82.17 TO STA. 35+84.17	12
STA. 36+41.83 TO STA. 36+43.83	12
TOTAL	36

XX002202 VEHICLE CONTROL BOLLARDS	
LOCATION	EACH
STA. 25+45.00	1
STA. 35+81.50	1
STA. 36+44.50	1
TOTAL	3

X0322494 CURB CUT	
LOCATION	FOOT
STA. 35+82.14, 10.0' LT TO STA. 35+90.14, 2.0' RT	14.6
TOTAL	14.6

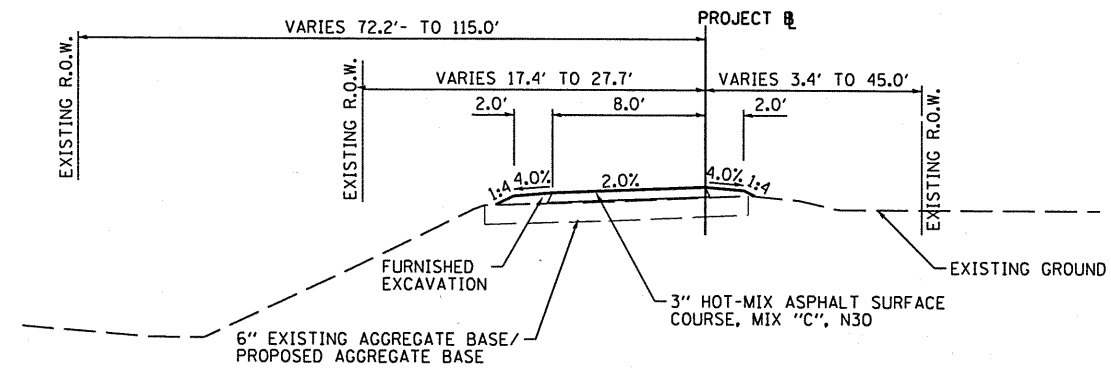
	20200100 EARTH EXCAVATION	EARTH EXCAVATION ADJUSTED FOR SHRINKAGE (25%)	EMBANKMENT	20400800 FURNISHED EXCAVATION
LOCATION	CU YD	CU YD	CU YD	CU YD
STA. 21+73.19 TO STA. 35+91.76	83.01	62.26	89.77	-27.51
STA. 36+40.57 TO STA. 43+51.81	46.43	34.82	1.11	33.71
TOTAL	129.45	94.86	90.99	6.21

	25000200 SEEDING, CLASS 2	25000400 NITROGEN FERTILIZER NUTRIENT	25000500 PHOSPHORUS FERTILIZER NUTRIENT	25000600 POTASSIUM FERTILIZER NUTRIENT	25100115 MULCH, METHOD 2
LOCATION	ACRE	POUND	POUND	POUND	ACRE
STA. 21+73.19 TO STA. 35+91.76	0.26	23.72	23.72	23.72	0.26
STA. 36+40.57 TO STA. 43+51.81	0.03	2.44	2.44	2.44	0.03
TOTAL	0.29	26.2	26.2	26.2	0.29

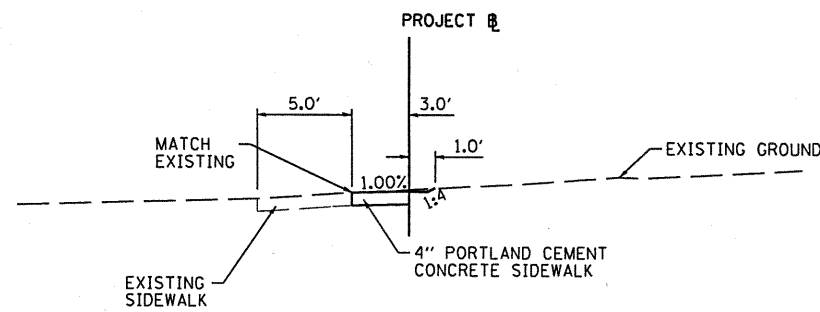


TYPICAL SECTION
 STA. 21+73.19 TO STA. 24+00.00
 STA. 36+38.17 TO STA. 37+15.80
 (MULTI-USE PATH)

LIGHTFOOT RD.
 OMISSION
 STA. 35+89.37 TO STA. 36+38.17

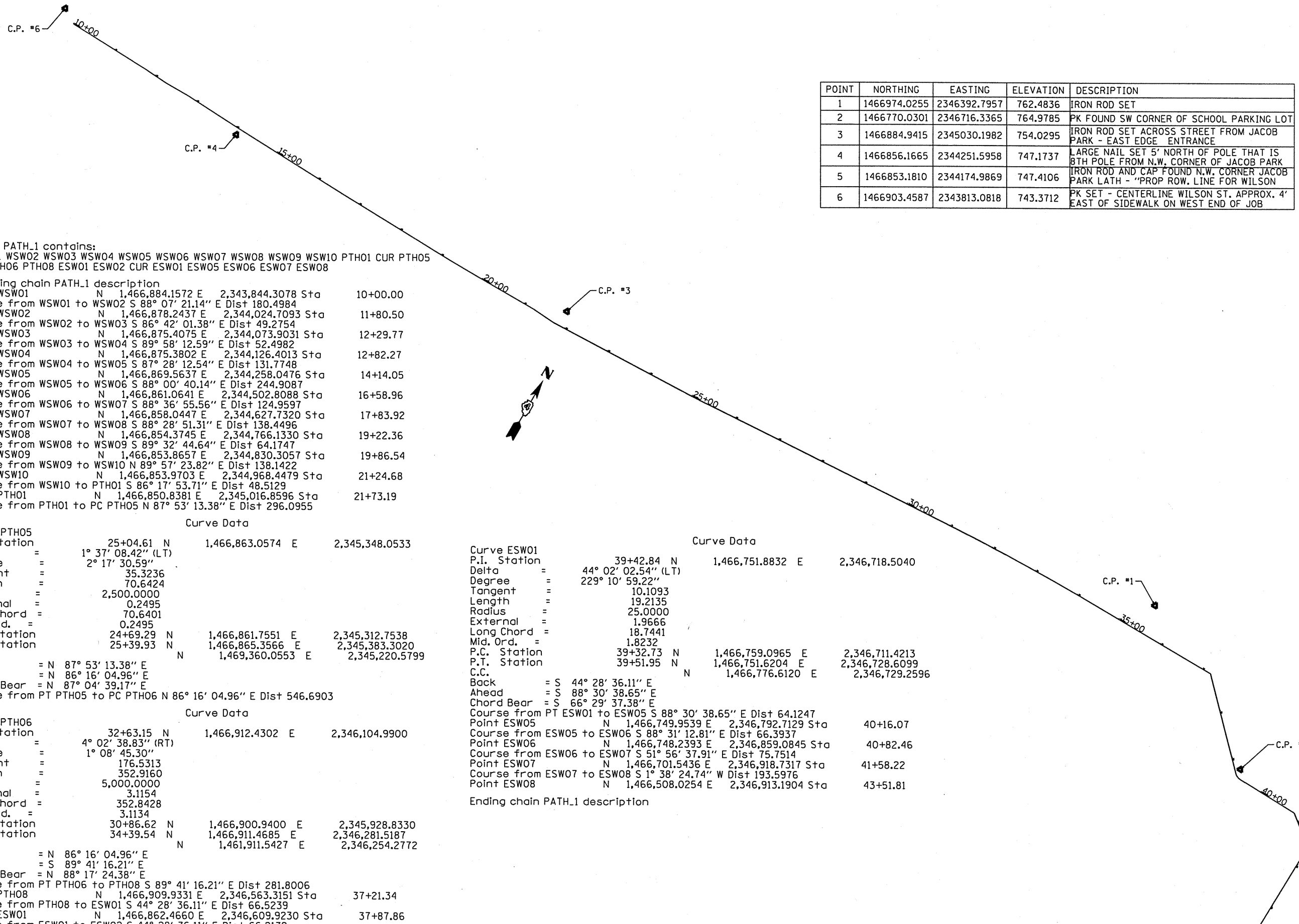


TYPICAL SECTION
 STA. 24+00.00 TO STA. 35+89.37
 (MULTI-USE PATH)



TYPICAL SECTION
 STA. 37+15.80 TO STA. 43+51.81
 (AT SCHOOL)

FILE NAME = #FILE#	USER NAME = #USER#	DESIGNED - JDS	REVISED -	STATE OF ILLINOIS DEPARTMENT OF TRANSPORTATION	CITY OF FARMINGTON SRTS TYPICAL SECTION			SECTION	COUNTY	TOTAL SHEETS	SHEET NO.
		DRAWN - WLL	REVISED -					08-00032-00-SW	FULTON	16	3
		CHECKED - GBM	REVISED -					CONTRACT NO. 89569			
		DATE -	REVISED -		SCALE:	SHEET NO. OF SHEETS	STA. TO STA.	ILLINOIS FED. AID PROJECT			



POINT	NORTHING	EASTING	ELEVATION	DESCRIPTION
1	1466974.0255	2346392.7957	762.4836	IRON ROD SET
2	1466770.0301	2346716.3365	764.9785	PK FOUND SW CORNER OF SCHOOL PARKING LOT
3	1466884.9415	2345030.1982	754.0295	IRON ROD SET ACROSS STREET FROM JACOB PARK - EAST EDGE ENTRANCE
4	1466856.1665	2344251.5958	747.1737	LARGE NAIL SET 5' NORTH OF POLE THAT IS 8TH POLE FROM N.W. CORNER OF JACOB PARK
5	1466853.1810	2344174.9869	747.4106	IRON ROD AND CAP FOUND N.W. CORNER JACOB PARK LATH - 'PROP ROW. LINE FOR WILSON
6	1466903.4587	2343813.0818	743.3712	PK SET - CENTERLINE WILSON ST. APPROX. 4' EAST OF SIDEWALK ON WEST END OF JOB

Chain PATH_1 contains:
 WSW01 WSW02 WSW03 WSW04 WSW05 WSW06 WSW07 WSW08 WSW09 WSW10 PTH01 CUR PTH05
 CUR PTH06 PTH08 ESW01 ESW02 CUR ESW01 ESW05 ESW06 ESW07 ESW08

Beginning chain PATH_1 description
 Point WSW01 N 1,466,884.1572 E 2,343,844.3078 Sta 10+00.00
 Course from WSW01 to WSW02 S 88° 07' 21.14" E Dist 180.4984
 Point WSW02 N 1,466,878.2437 E 2,344,024.7093 Sta 11+80.50
 Course from WSW02 to WSW03 S 86° 42' 01.38" E Dist 49.2754
 Point WSW03 N 1,466,875.4075 E 2,344,073.9031 Sta 12+29.77
 Course from WSW03 to WSW04 S 89° 58' 12.59" E Dist 52.4982
 Point WSW04 N 1,466,875.3802 E 2,344,126.4013 Sta 12+82.27
 Course from WSW04 to WSW05 S 87° 28' 12.54" E Dist 131.7748
 Point WSW05 N 1,466,869.5637 E 2,344,258.0476 Sta 14+14.05
 Course from WSW05 to WSW06 S 88° 00' 40.14" E Dist 244.9087
 Point WSW06 N 1,466,861.0641 E 2,344,502.8088 Sta 16+58.96
 Course from WSW06 to WSW07 S 88° 36' 55.56" E Dist 124.9597
 Point WSW07 N 1,466,858.0447 E 2,344,627.7320 Sta 17+83.92
 Course from WSW07 to WSW08 S 88° 28' 51.31" E Dist 138.4496
 Point WSW08 N 1,466,854.3745 E 2,344,766.1330 Sta 19+22.36
 Course from WSW08 to WSW09 S 89° 32' 44.64" E Dist 64.1747
 Point WSW09 N 1,466,853.8657 E 2,344,830.3057 Sta 19+86.54
 Course from WSW09 to WSW10 N 89° 57' 23.82" E Dist 138.1422
 Point WSW10 N 1,466,853.9703 E 2,344,968.4479 Sta 21+24.68
 Course from WSW10 to PTH01 S 86° 17' 53.71" E Dist 48.5129
 Point PTH01 N 1,466,850.8381 E 2,345,016.8596 Sta 21+73.19
 Course from PTH01 to PC PTH05 N 87° 53' 13.38" E Dist 296.0955

Curve Data
 P.I. Station 25+04.61 N 1,466,863.0574 E 2,345,348.0533
 Delta = 1° 37' 08.42" (LT)
 Degree = 2° 17' 30.59"
 Tangent = 35.3236
 Length = 70.6424
 Radius = 2,500.0000
 External = 0.2495
 Long Chord = 70.6401
 Mid. Ord. = 0.2495
 P.C. Station 24+69.29 N 1,466,861.7551 E 2,345,312.7538
 P.T. Station 25+39.93 N 1,466,865.3566 E 2,345,383.3020
 C.C. N 1,469,360.0553 E 2,345,220.5799
 Back = N 87° 53' 13.38" E
 Ahead = N 86° 16' 04.96" E
 Chord Bear = N 87° 04' 39.17" E
 Course from PT PTH05 to PC PTH06 N 86° 16' 04.96" E Dist 546.6903

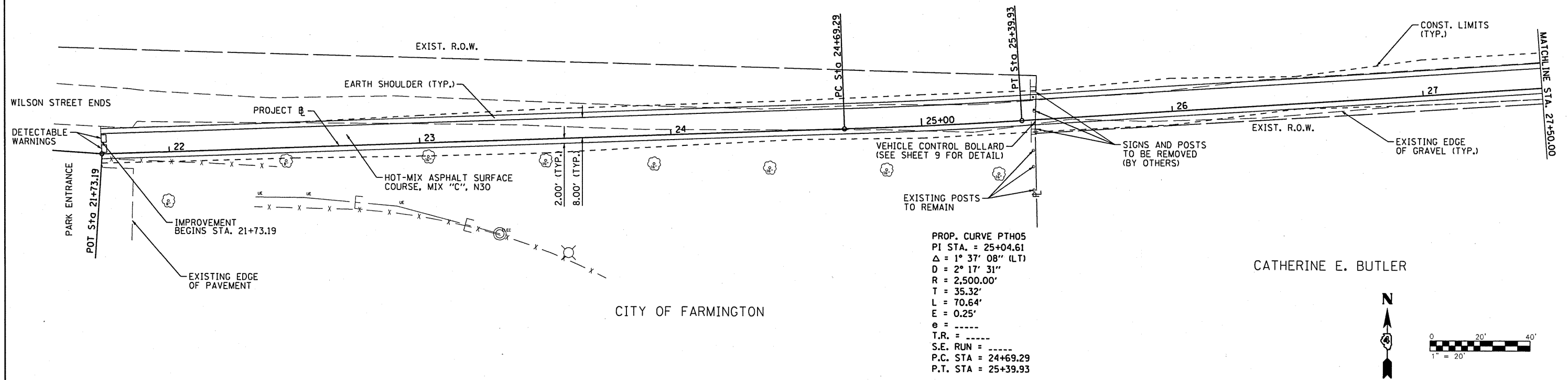
Curve Data
 P.I. Station 39+42.84 N 1,466,751.8832 E 2,346,718.5040
 Delta = 44° 02' 02.54" (LT)
 Degree = 229° 10' 59.22"
 Tangent = 10.1093
 Length = 19.2135
 Radius = 25.0000
 External = 1.9666
 Long Chord = 18.7441
 Mid. Ord. = 1.8232
 P.C. Station 39+32.73 N 1,466,759.0965 E 2,346,711.4213
 P.T. Station 39+51.95 N 1,466,751.6204 E 2,346,728.6099
 C.C. N 1,466,776.6120 E 2,346,729.2596
 Back = S 44° 28' 36.11" E
 Ahead = S 88° 30' 38.65" E
 Chord Bear = S 66° 29' 37.38" E
 Course from PT ESW01 to ESW05 S 88° 30' 38.65" E Dist 64.1247
 Point ESW05 N 1,466,749.9539 E 2,346,792.7129 Sta 40+16.07
 Course from ESW05 to ESW06 S 88° 31' 12.81" E Dist 66.3937
 Point ESW06 N 1,466,748.2393 E 2,346,859.0845 Sta 40+82.46
 Course from ESW06 to ESW07 S 51° 56' 37.91" E Dist 75.7514
 Point ESW07 N 1,466,701.5436 E 2,346,918.7317 Sta 41+58.22
 Course from ESW07 to ESW08 S 1° 38' 24.74" W Dist 193.5976
 Point ESW08 N 1,466,508.0254 E 2,346,913.1904 Sta 43+51.81
 Ending chain PATH_1 description

Curve Data
 P.I. Station 32+63.15 N 1,466,912.4302 E 2,346,104.9900
 Delta = 4° 02' 38.83" (RT)
 Degree = 1° 08' 45.30"
 Tangent = 176.5313
 Length = 352.9160
 Radius = 5,000.0000
 External = 3.1154
 Long Chord = 352.8428
 Mid. Ord. = 3.1134
 P.C. Station 30+86.62 N 1,466,900.9400 E 2,345,928.8330
 P.T. Station 34+39.54 N 1,466,911.4685 E 2,346,281.5187
 C.C. N 1,461,911.5427 E 2,346,254.2772
 Back = N 86° 16' 04.96" E
 Ahead = S 89° 41' 16.21" E
 Chord Bear = N 88° 17' 24.38" E
 Course from PT PTH06 to PTH08 S 89° 41' 16.21" E Dist 281.8006
 Point PTH08 N 1,466,909.9331 E 2,346,563.3151 Sta 37+21.34
 Course from PTH08 to ESW01 S 44° 28' 36.11" E Dist 66.5239
 Point ESW01 N 1,466,862.4660 E 2,346,609.9230 Sta 37+87.86
 Course from ESW01 to ESW02 S 44° 28' 36.11" E Dist 66.2179
 Point ESW02 N 1,466,815.2171 E 2,346,656.3165 Sta 38+54.08
 Course from ESW02 to PC ESW01 S 44° 28' 36.11" E Dist 78.6515

FILE NAME =	USER NAME = *USER*	DESIGNED - JDS	REVISED -	STATE OF ILLINOIS DEPARTMENT OF TRANSPORTATION	CITY OF FARMINGTON SRTS ALIGNMENT, TIES, AND BENCHMARKS				SECTION	COUNTY	TOTAL SHEETS	SHEET NO.
#FILE#		DRAWN - WLL	REVISED -		08-00032-00-SW	FULTON	16	4				
		CHECKED - GBM	REVISED -		CONTRACT NO. 89569							
		DATE -	REVISED -		SCALE:	SHEET NO. OF SHEETS	STA. TO STA.	ILLINOIS FED. AID PROJECT				

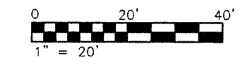
CATHERINE E. BUTLER

EXIST. R.O.W.



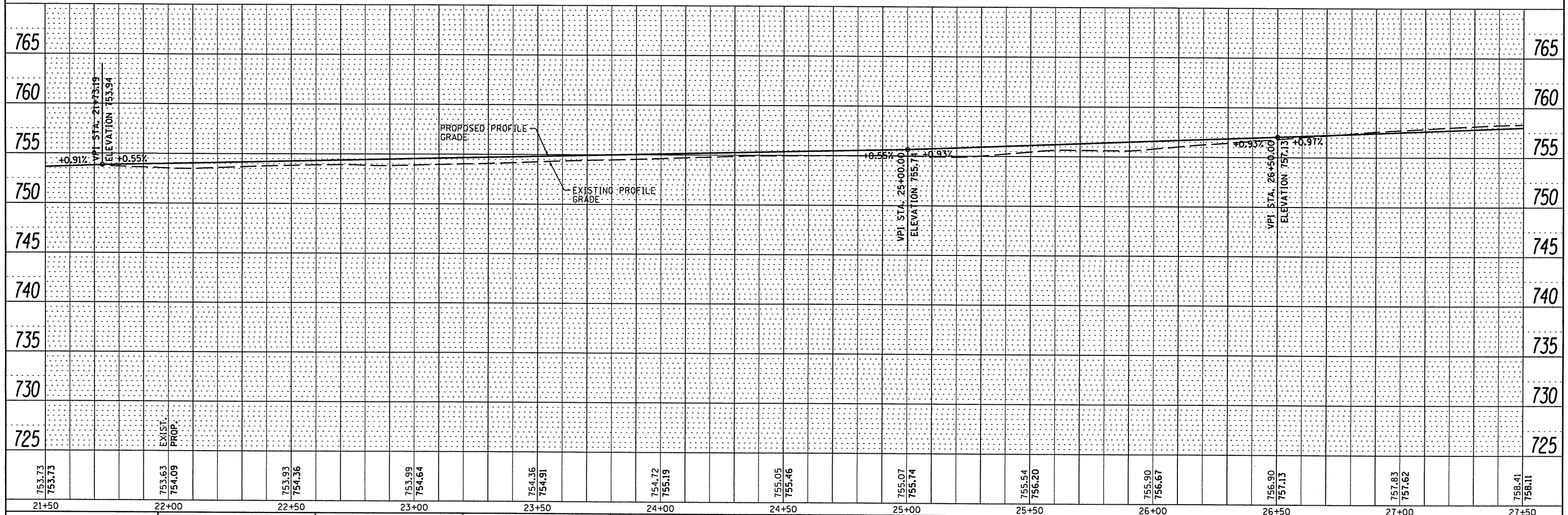
CITY OF FARMINGTON

CATHERINE E. BUTLER



PLAN	DATE
BY	
NO.	
FILE NAME	
NO.	
FILE NAME	

PROFILE	DATE
BY	
NO.	
FILE NAME	
NO.	
FILE NAME	



753.73	753.73	753.63	754.09	753.93	754.36	753.99	754.64	754.36	754.91	754.72	755.19	755.05	755.46	755.07	755.74	755.54	756.20	755.90	756.67	756.90	757.13	757.83	757.62	756.41	756.11
21+50	22+00	22+50	23+00	23+50	24+00	24+50	25+00	25+50	26+00	26+50	27+00	27+50													

FILE NAME =	USER NAME = \$USER*
\$FILEL*	
DESIGNED - JDS	REVISD -
DRAWN - WLL	REVISD -
CHECKED - GBM	REVISD -
DATE -	REVISD -

STATE OF ILLINOIS
DEPARTMENT OF TRANSPORTATION

CITY OF FARMINGTON SRTS
PLAN AND PROFILE

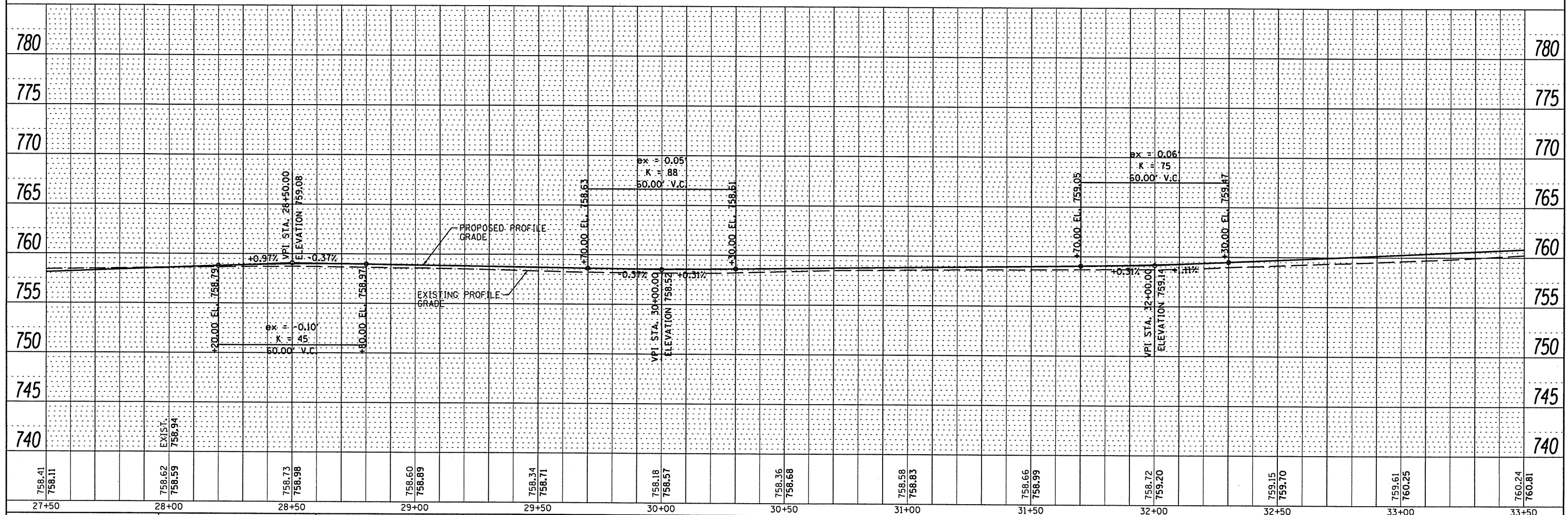
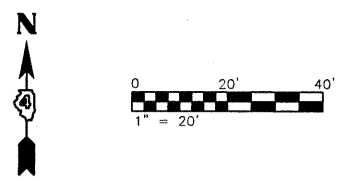
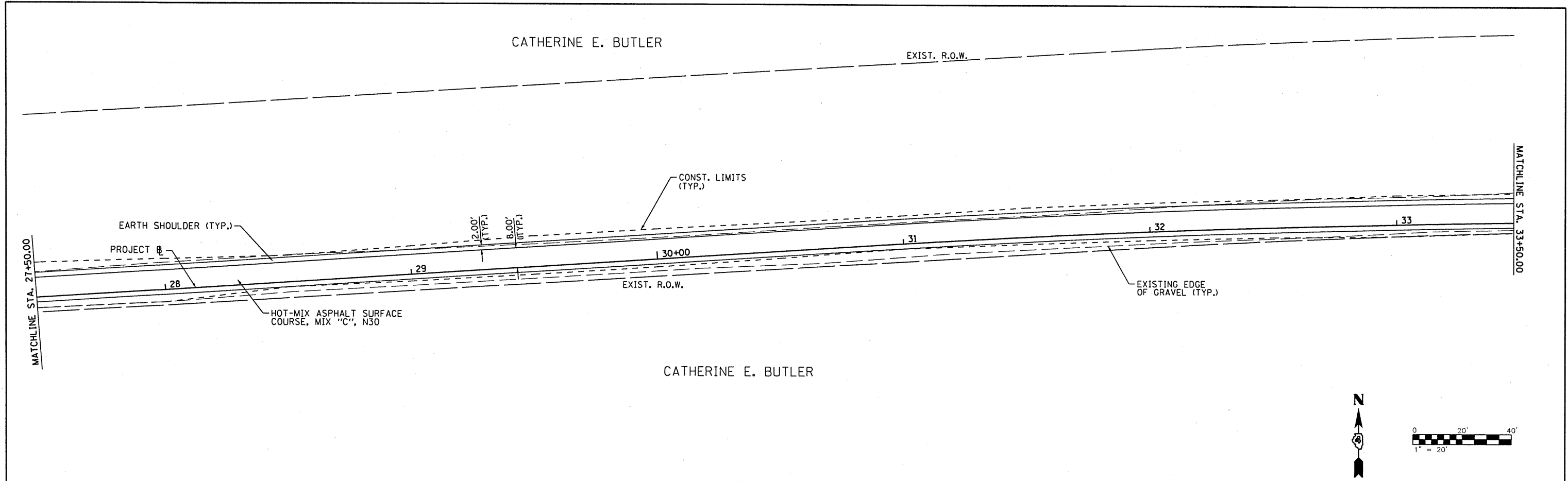
SECTION	COUNTY	TOTAL SHEETS	SHEET NO.
08-00032-00-SW	FULTON	16	5
CONTRACT NO. 89569			

SCALE: SHEET NO. OF SHEETS STA. TO STA.

ILLINOIS FED. AID PROJECT

PLAN	SUBMITTED	DATE
	PLOTTED	BY
	ALIGNMENT CHECKED	
	NOTE BOOK	
	NO.	
	FILE NAME	

PROFILE	SUBMITTED	DATE
	PLOTTED	BY
	GRADES CHECKED	
	NOTE BOOK	
	NO.	
	FILE NAME	



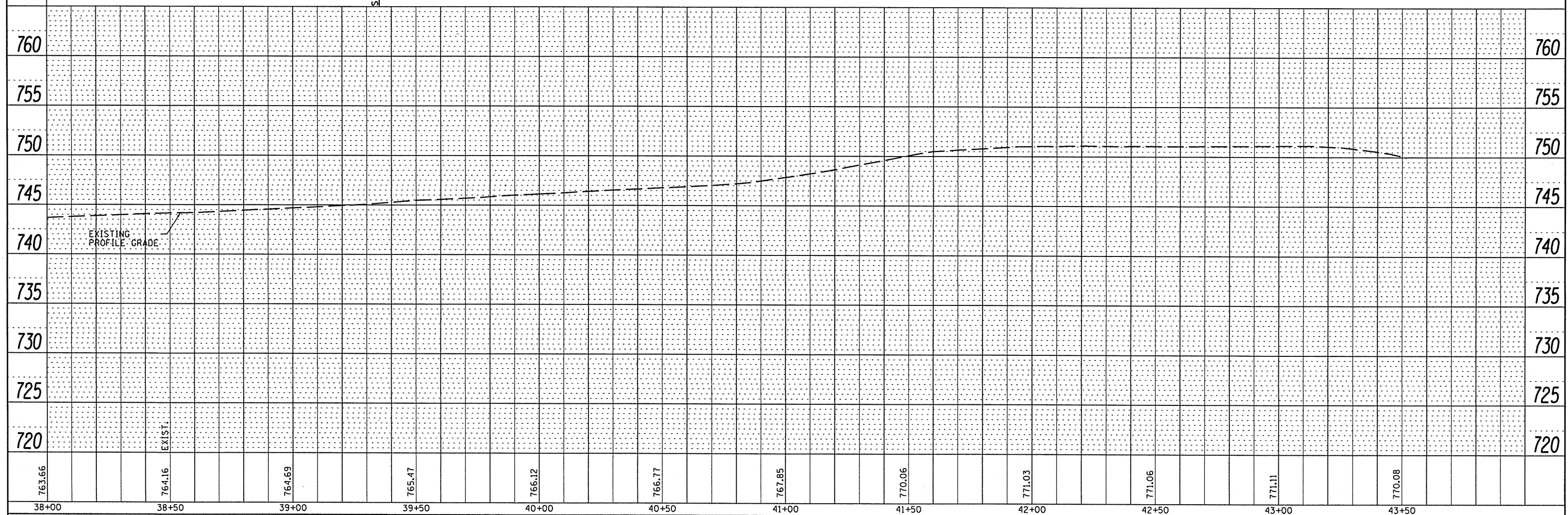
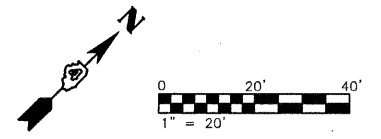
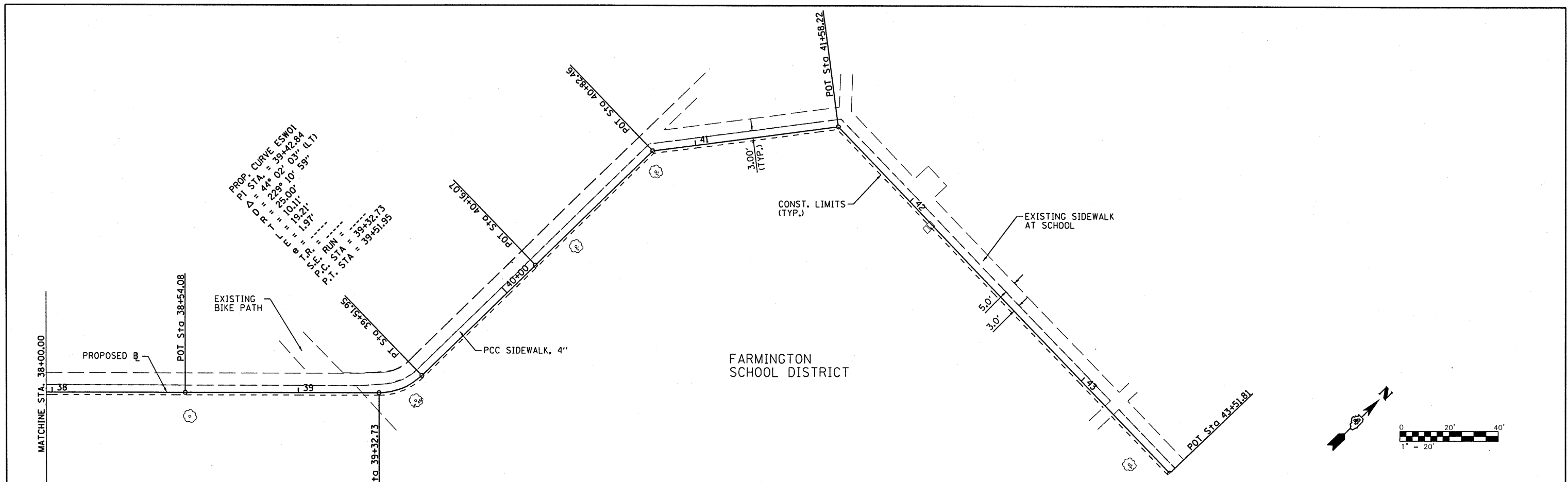
758.41 758.11	758.62 758.59	758.73 758.98	758.60 758.89	758.34 758.71	758.18 758.57	758.36 758.68	758.58 758.83	758.66 758.99	758.72 759.20	759.15 759.70	759.61 760.25	760.24 760.81
27+50	28+00	28+50	29+00	29+50	30+00	30+50	31+00	31+50	32+00	32+50	33+00	33+50

FILE NAME =	USER NAME = #USER#	DESIGNED - JDS	REVISED -
#FILE#		DRAWN - WLL	REVISED -
	PLOT SCALE = #SCALE#	CHECKED - GBM	REVISED -
	PLOT DATE = #DATE#	DATE -	REVISED -

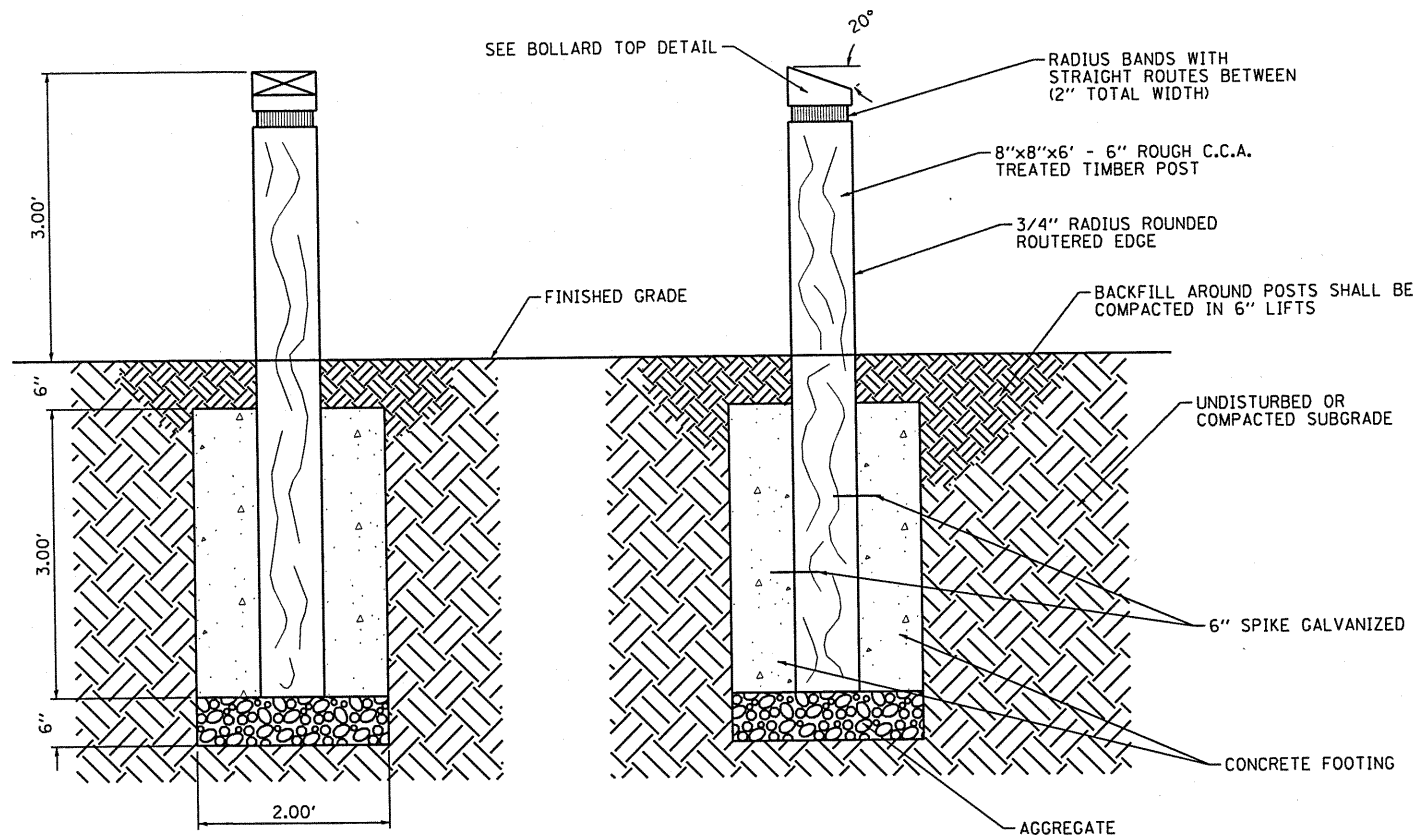
STATE OF ILLINOIS DEPARTMENT OF TRANSPORTATION		CITY OF FARMINGTON SRTS PLAN AND PROFILE	
SCALE:	SHEET NO. OF SHEETS	STA. TO STA.	ILLINOIS FED. AID PROJECT
			SECTION: 08-00032-00-SW
			COUNTY: FULTON
			TOTAL SHEETS: 16
			SHEET NO.: 6
			CONTRACT NO. 89569

PLAN	REVISIONS	DATE
NO.	BY	
NOTE BOOK		
ALIGNMENT CHECKED		
PLOTTED		
DATE PLOTTED		
CADD FILE NAME		

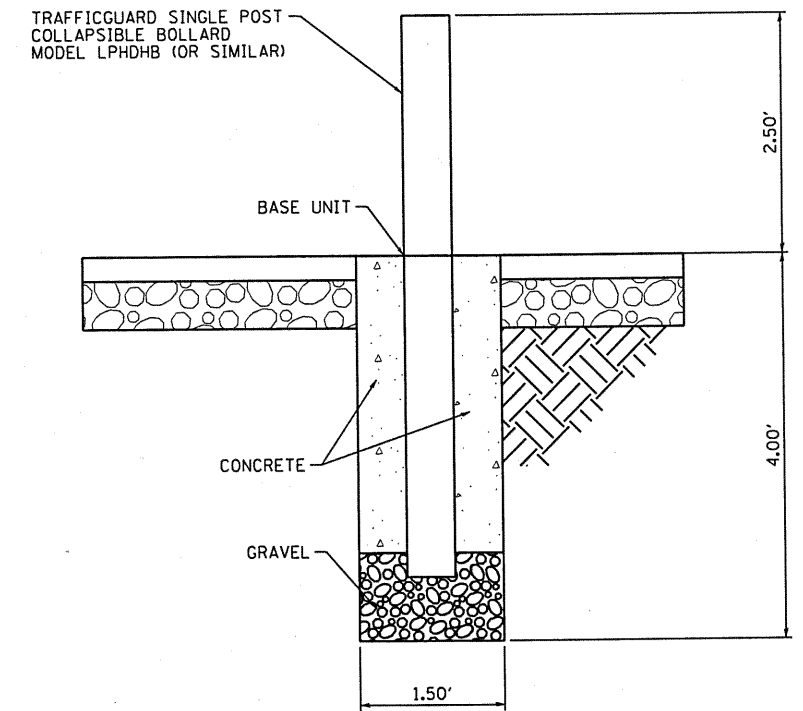
PROFILE	REVISIONS	DATE
NO.	BY	
NOTE BOOK		
GRADES CHECKED		
PLOTTED		
DATE PLOTTED		
STRUCTURE NOTATIONS CHECKED		



FILE NAME =	USER NAME = *USER*	DESIGNED - JDS	REVISED -	STATE OF ILLINOIS DEPARTMENT OF TRANSPORTATION	CITY OF FARMINGTON SRTS PLAN AND PROFILE	SECTION	COUNTY	TOTAL SHEETS	SHEET NO.
#FILE#		DRAWN - WLL	REVISED -			08-00032-00-SW	FULTON	16	8
		CHECKED - GBM	REVISED -			CONTRACT NO. 89569			
		DATE -	REVISED -			ILLINOIS FED. AID PROJECT			
				SCALE:	SHEET NO. OF SHEETS	STA. TO STA.			

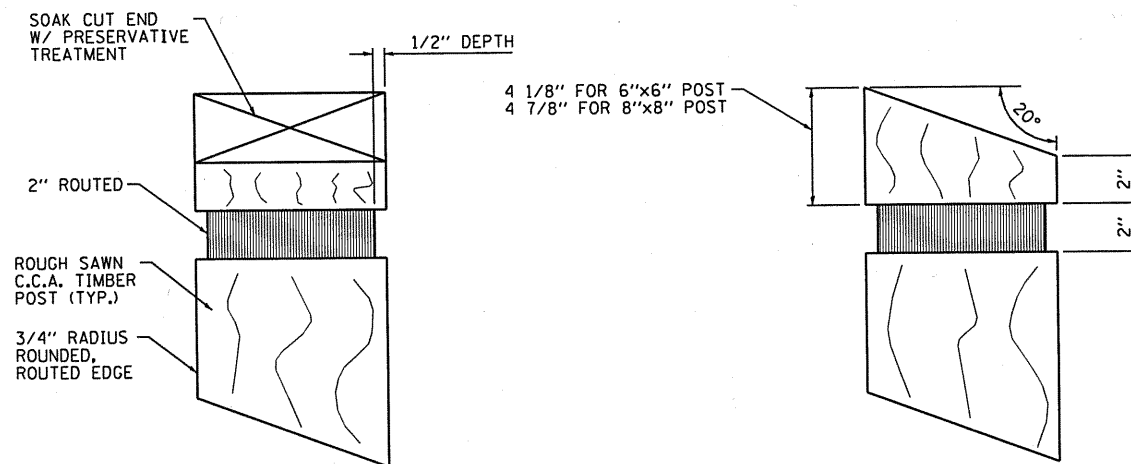


WOOD BOLLARD DETAIL

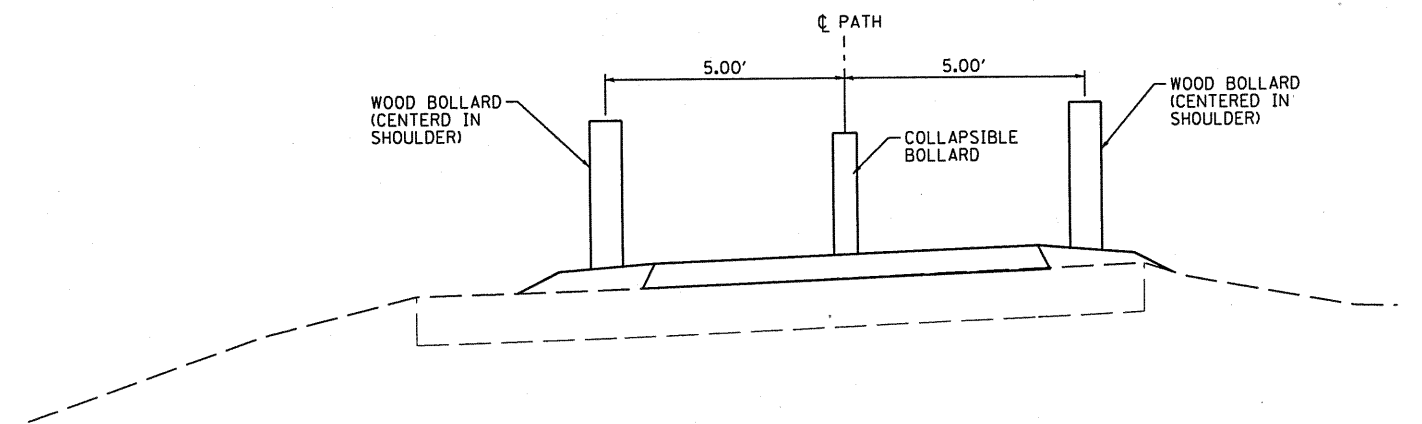


NOTE:
COLLAPSIBLE BOLLARD MUST BE INSTALLED SO
ENTIRE LENGTH RESTS ON PAVEMENT WHEN
COLLAPSED.

COLLAPSIBLE BOLLARD DETAIL



BOLLARD TOP DETAIL

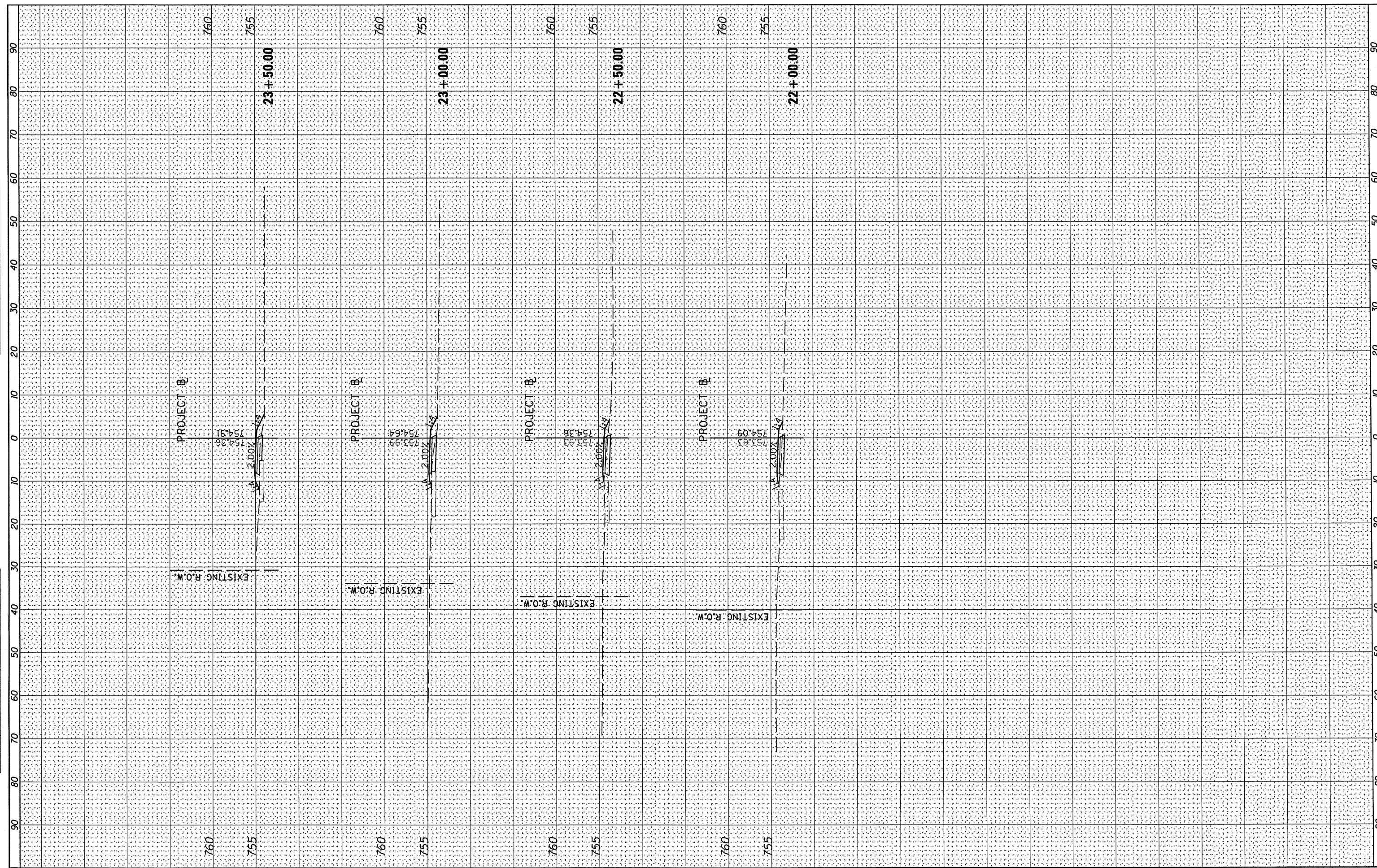


BOLLARD PLACEMENT DETAIL

FILE NAME =	USER NAME = #USER#	DESIGNED - JDS	REVISED -	STATE OF ILLINOIS DEPARTMENT OF TRANSPORTATION	CITY OF FARMINGTON SRTS VEHICLE CONTROL BOLLARD DETAIL			SECTION	COUNTY	TOTAL SHEETS	SHEET NO.	
#FILE#		DRAWN - WLL	REVISED -		SCALE:	SHEET NO.	OF SHEETS	STA.	TO STA.	08-00032-00-SW	FULTON	16 9
	PLOT SCALE = #SCALE#	CHECKED - GBM	REVISED -		CONTRACT NO. 89569							
	PLOT DATE = #DATE#	DATE -	REVISED -		ILLINOIS FED. AID PROJECT							

FINAL SURVEY	SURVEYED	BY	DATE
NOTE BOOK NO.	PLOTTED		
	TEMPLATE		
	AREAS CHECKED		

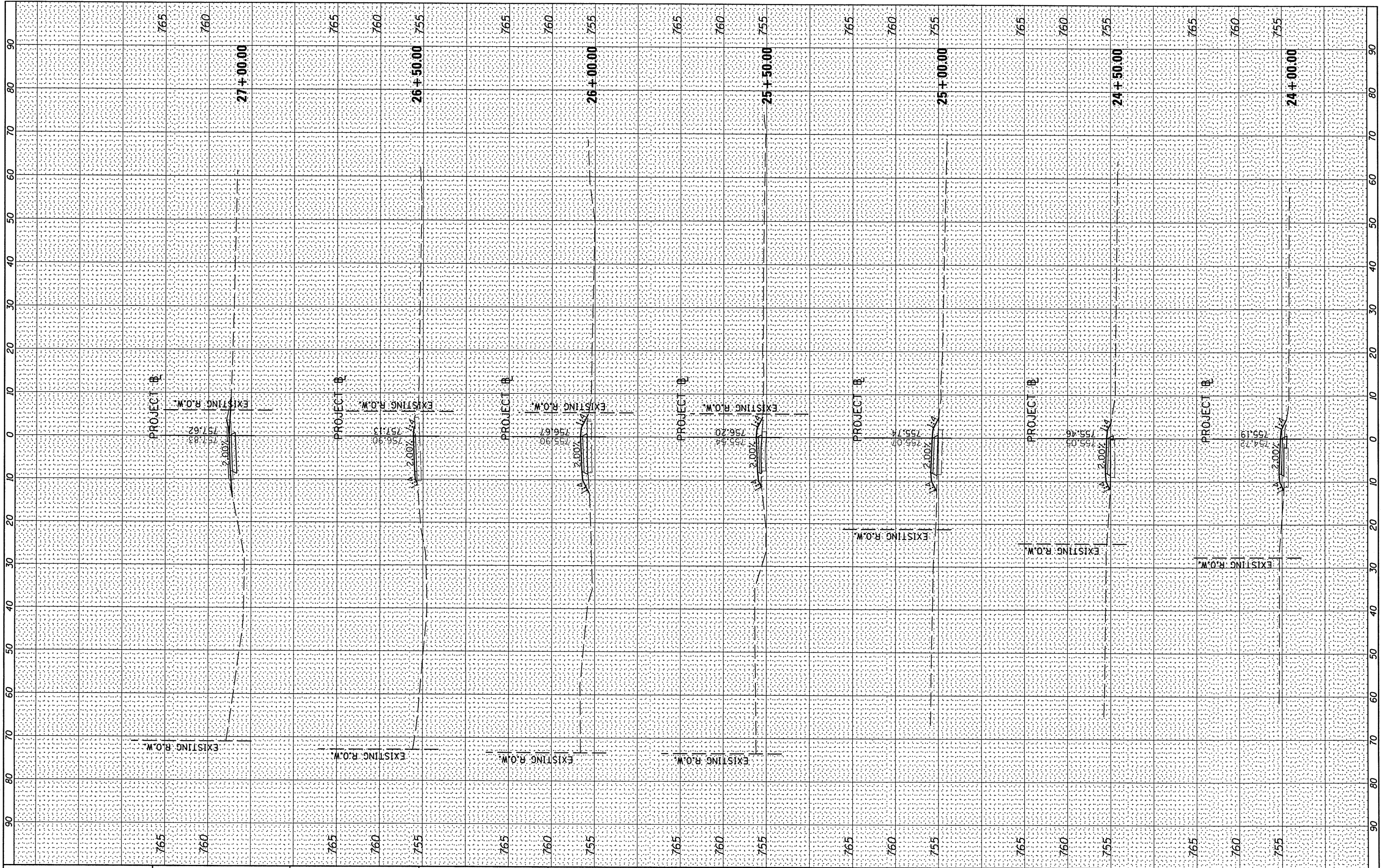
ORIGINAL SURVEY	SURVEYED	BY	DATE
NOTE BOOK NO.	PLOTTED		
	TEMPLATE		
	AREAS CHECKED		



FILE NAME =	USER NAME = *USER*	DESIGNED - JDS	REVISED -	STATE OF ILLINOIS DEPARTMENT OF TRANSPORTATION	CITY OF FARMINGTON SRTS CROSS SECTIONS	F.A. RTE.	SECTION	COUNTY	TOTAL SHEETS	SHEET NO.	
FILEL		DRAWN - JDS	REVISED -			08-00032-00-SW	FULTON	16	10		
		CHECKED - GBM	REVISED -			CONTRACT NO. 89569					
		DATE -	REVISED -			ILLINOIS FED. AID PROJECT					
				SCALE:	SHEET NO. OF SHEETS	STA. 22+00.00 TO STA. 23+50.00					

FINAL SURVEY NO.	DATE
BY	
REVISIONS	
NO.	
DATE	
BY	
REVISIONS	
NO.	
DATE	
BY	
REVISIONS	
NO.	
DATE	
BY	
REVISIONS	
NO.	
DATE	

ORIGINAL SURVEY NO.	DATE
BY	
REVISIONS	
NO.	
DATE	
BY	
REVISIONS	
NO.	
DATE	
BY	
REVISIONS	
NO.	
DATE	



FILE NAME =
\$FILE\$

USER NAME = \$USER\$

DESIGNED - JDS
DRAWN - JDS
CHECKED - GBM
DATE -

REVISED -
REVISED -
REVISED -
REVISED -

**STATE OF ILLINOIS
DEPARTMENT OF TRANSPORTATION**

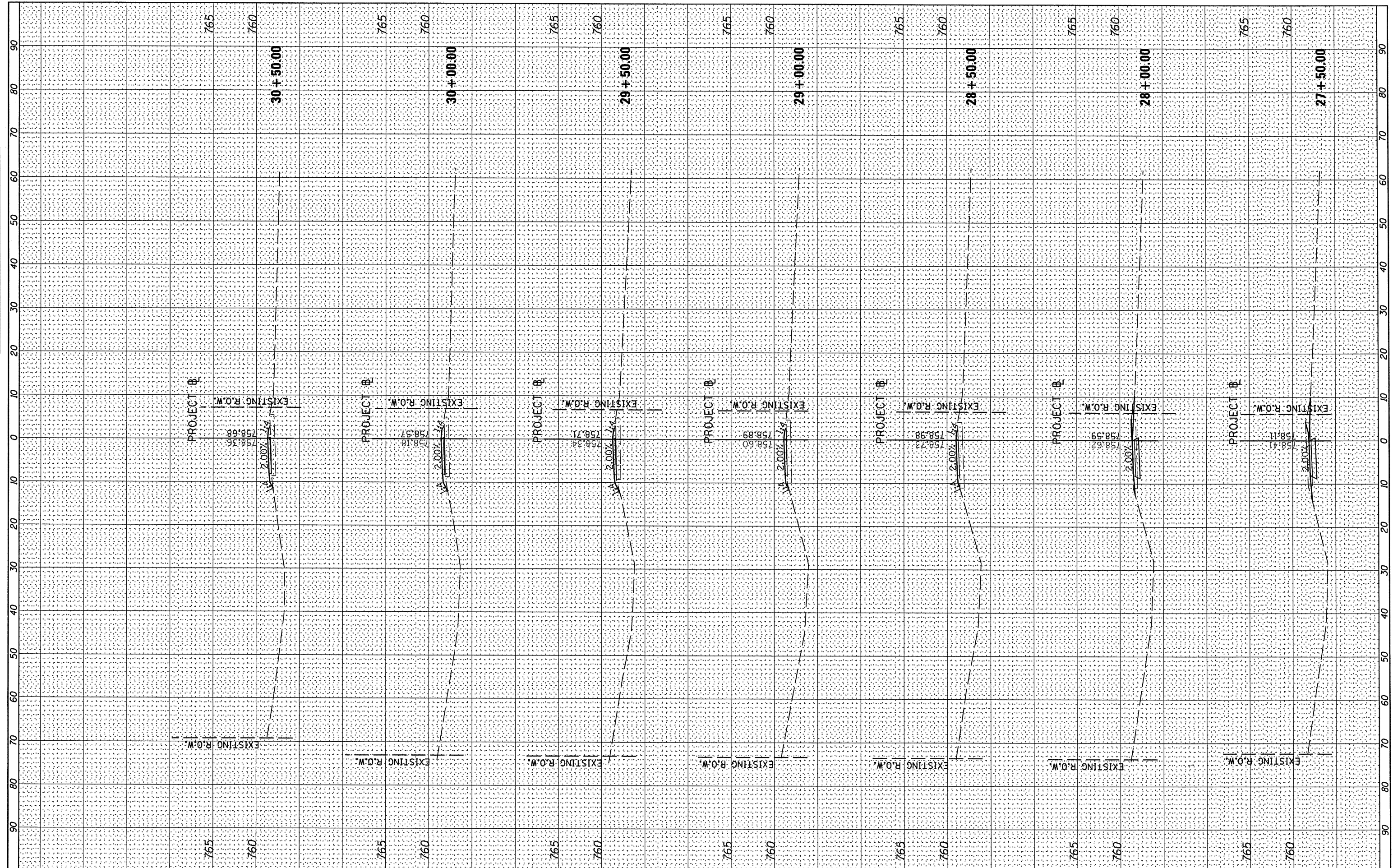
CITY OF FARMINGTON SRTS CROSS SECTIONS

SCALE: SHEET NO. OF SHEETS STA. 24+00.00 TO STA. 27+00.00

F.A. RTE.	SECTION	COUNTY	TOTAL SHEETS	SHEET NO.
	08-00032-00-SW	FULTON	16	11
CONTRACT NO. 89569				
ILLINOIS FED. AID PROJECT				

FINAL SURVEY NO.	SURVEYED	BY	DATE
	PLOTTED		
	TEMPLATE		
	AREAS CHECKED		

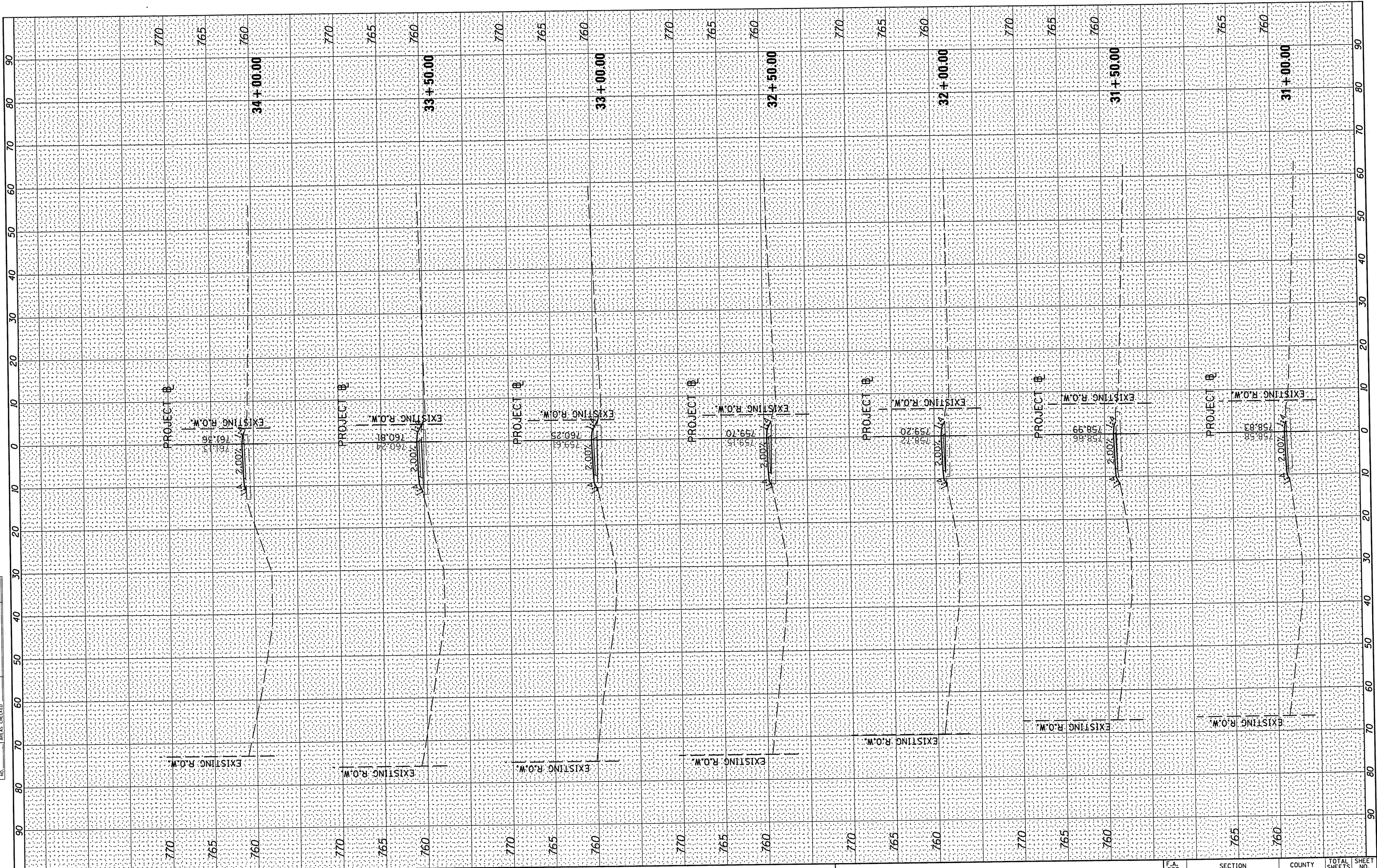
ORIGINAL SURVEY NO.	SURVEYED	BY	DATE
	PLOTTED		
	TEMPLATE		
	AREAS CHECKED		



FILE NAME :	USER NAME : *USER*	DESIGNED - JDS	REVISED -	STATE OF ILLINOIS DEPARTMENT OF TRANSPORTATION	CITY OF FARMINGTON SRTS CROSS SECTIONS			F.A. RTE.	SECTION	COUNTY	TOTAL SHEETS	SHEET NO.
FILEL		DRAWN - JDS	REVISED -		SCALE:	SHEET NO. OF SHEETS	STA. 27+50.00 TO STA. 30+50.00	08-00032-00-SW	FULTON	16	12	
		CHECKED - GBM	REVISED -					CONTRACT NO. 89569				
		DATE -	REVISED -					[ILLINOIS] FED. AID PROJECT				

FINAL SURVEY NO.	SURVEYED	BY	DATE
	PLOTTED		
	TEMPLATE		
	AREAS CHECKED		

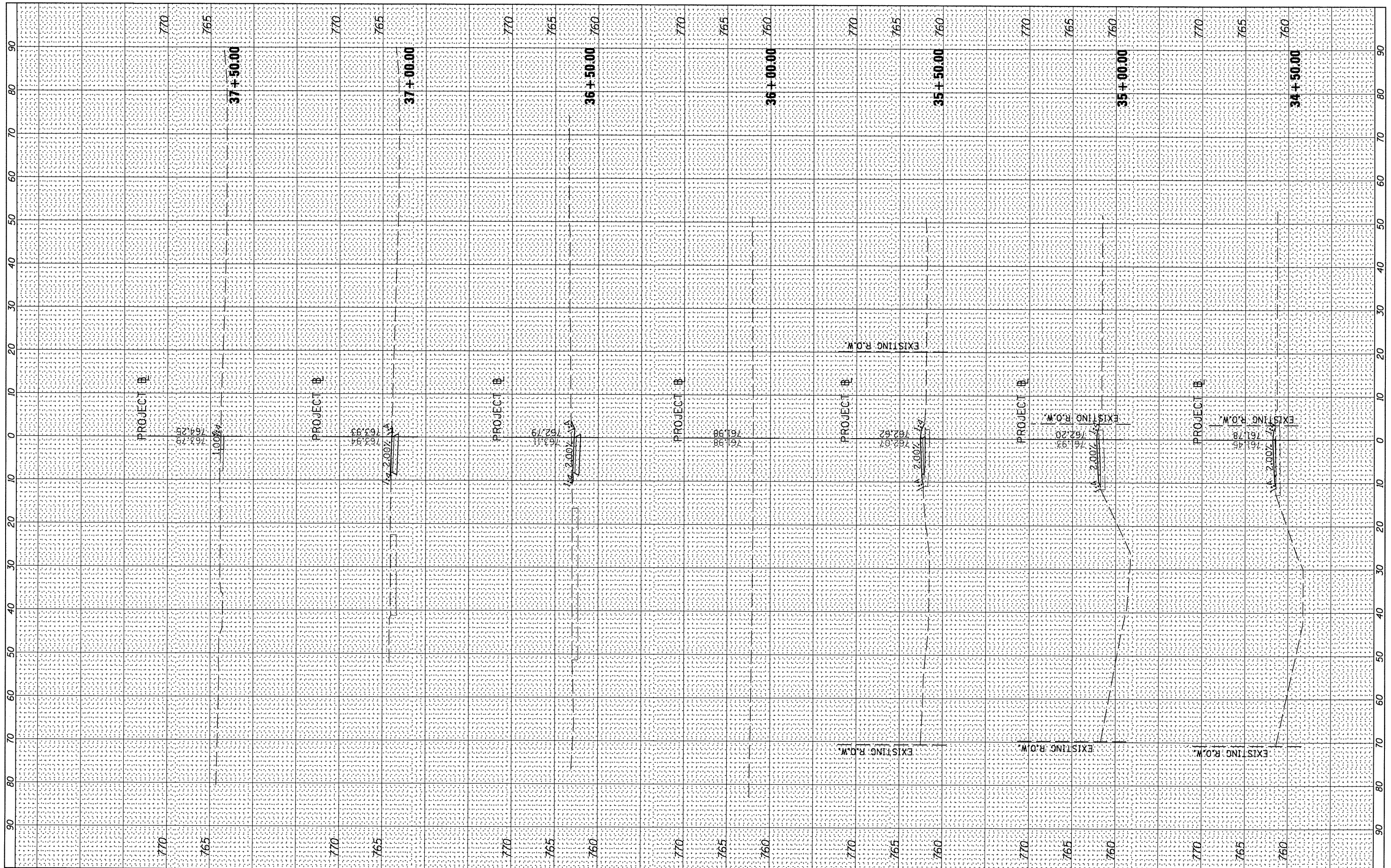
ORIGINAL SURVEY NO.	SURVEYED	BY	DATE
	PLOTTED		
	TEMPLATE		
	AREAS CHECKED		



FILE NAME *	USER NAME * #USER*	DESIGNED - JDS	REVISED -	STATE OF ILLINOIS DEPARTMENT OF TRANSPORTATION	CITY OF FARMINGTON SRTS CROSS SECTIONS	F.A. RTE.	SECTION	COUNTY	TOTAL SHEETS	SHEET NO.	
#FILEL*		DRAWN - JDS	REVISED -			08-00032-00-SW	FULTON	16	13		
PLOT SCALE * #SCALE*		CHECKED - GBM	REVISED -			CONTRACT NO. 89569					
PLOT DATE * #DATE*		DATE -	REVISED -			ILLINOIS FED. AID PROJECT					
SCALE:						SHEET NO.	OF	SHEETS	STA. 31+00.00 TO STA. 34+00.00		

FINAL SURVEY NOTE BOOK NO.	BY	DATE
SURVEYED		
TEMPLATE		
AREAS CHECKED		

ORIGINAL SURVEY NOTE BOOK NO.	BY	DATE
SURVEYED		
TEMPLATE		
AREAS CHECKED		



FILE NAME =
#FILE#

USER NAME = #USER#
PLOT SCALE = #SCALE#
PLOT DATE = #DATE#

DESIGNED - JDS
DRAWN - JDS
CHECKED - GBM
DATE -

REVISED -
REVISED -
REVISED -
REVISED -

**STATE OF ILLINOIS
DEPARTMENT OF TRANSPORTATION**

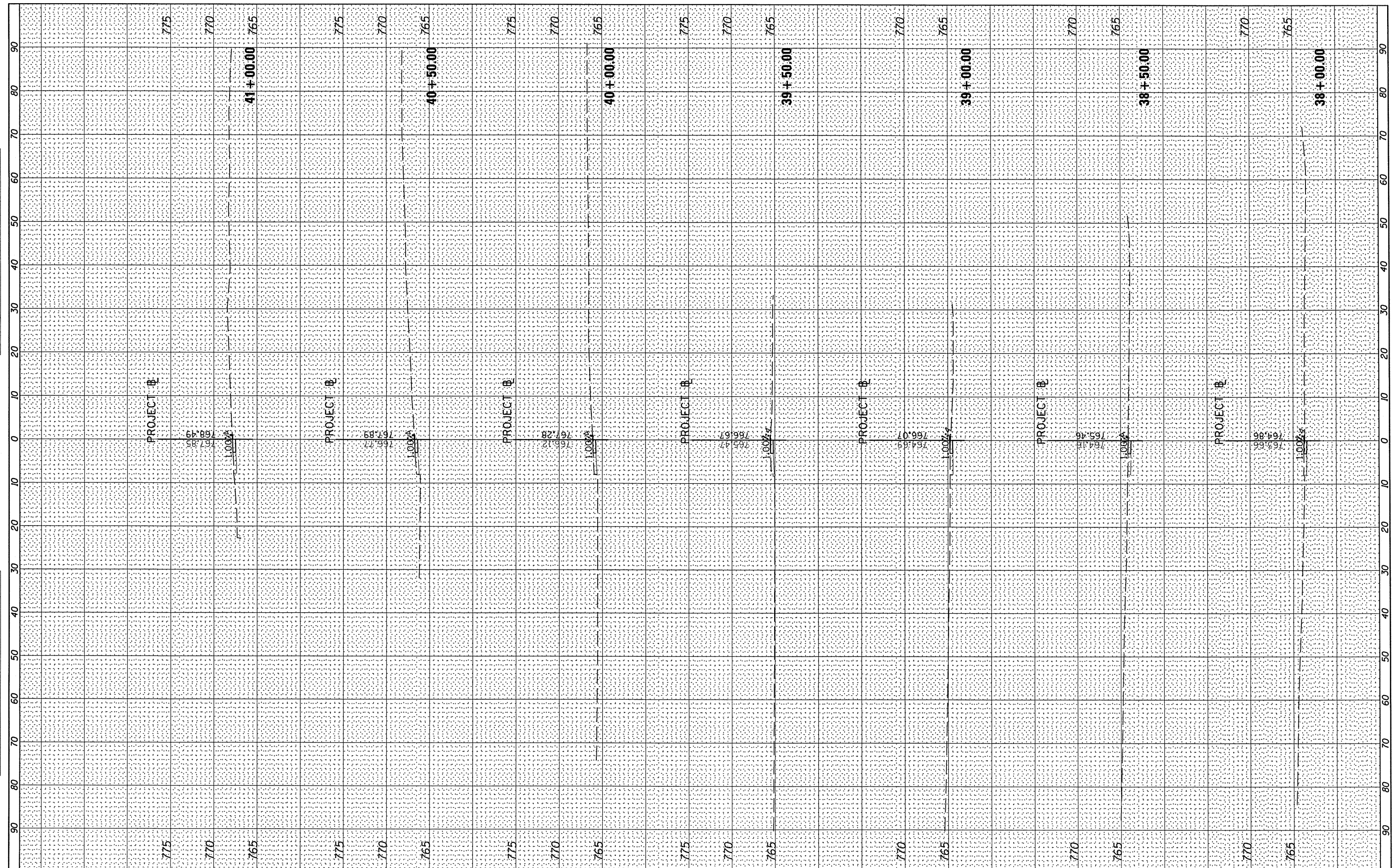
CITY OF FARMINGTON SRTS CROSS SECTIONS

SCALE: SHEET NO. OF SHEETS STA. 34+50.00 TO STA. 37+50.00

F.A. RTE.	SECTION	COUNTY	TOTAL SHEETS	SHEET NO.
	08-00032-00-SW	FULTON	16	14
CONTRACT NO. 89569			ILLINOIS FED. AID PROJECT	

FINAL SURVEY	SURVEYED	BY	DATE
NOTE BOOK	PLOTTED		
NO.	TEMPLATE		
	AREAS		
	CHECKED		

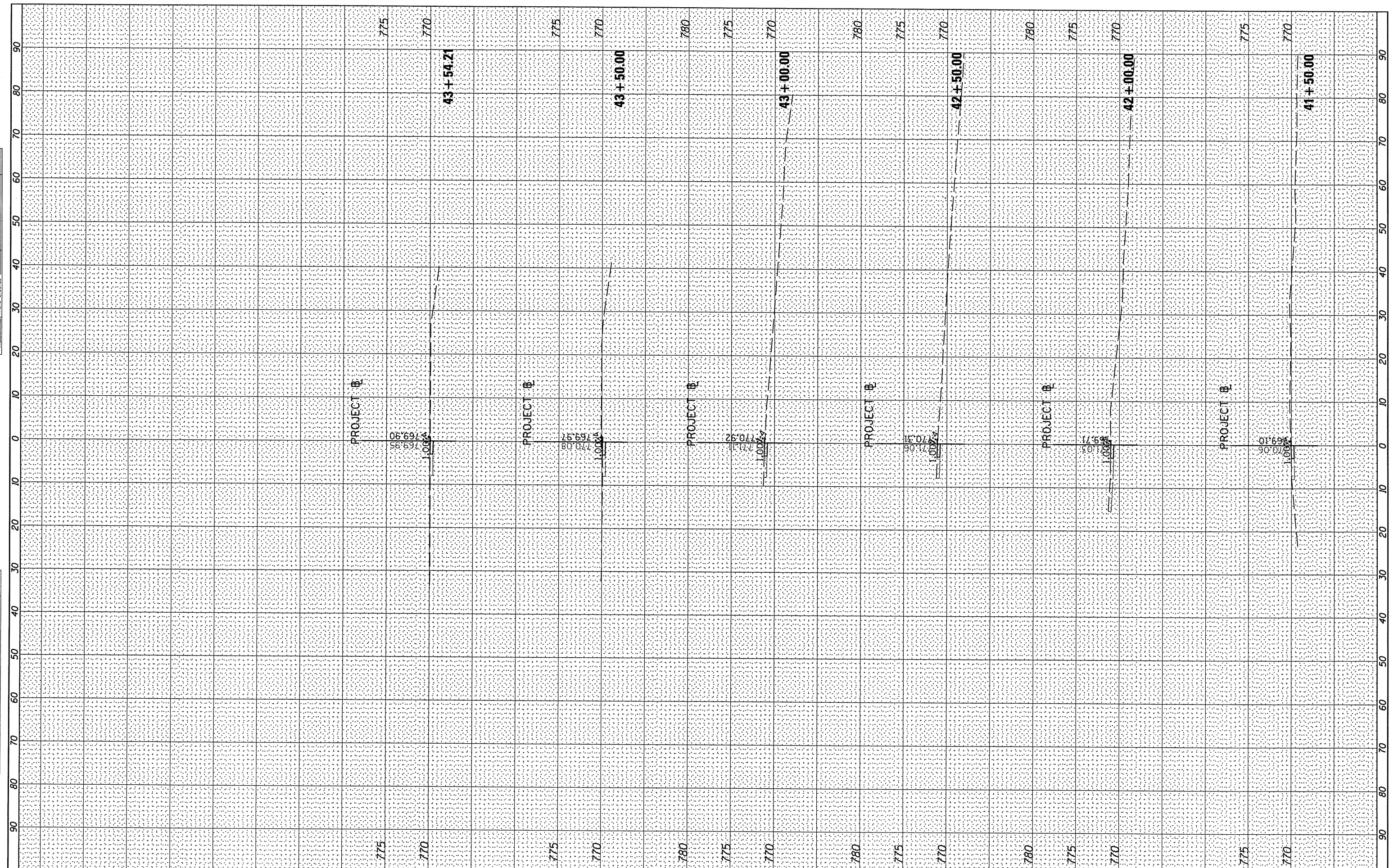
ORIGINAL SURVEY	SURVEYED	BY	DATE
NOTE BOOK	PLOTTED		
NO.	TEMPLATE		
	AREAS		
	CHECKED		



FILE NAME *	USER NAME * \$USER*	DESIGNED - JDS	REVISED -	STATE OF ILLINOIS DEPARTMENT OF TRANSPORTATION	CITY OF FARMINGTON SRTS CROSS SECTIONS	F.A. RTE.	SECTION	COUNTY	TOTAL SHEETS	SHEET NO.	
FILEL		DRAWN - JDS	REVISED -				08-00032-00-SW	FULTON	16	15	
	PLOT SCALE * \$SCALE*	CHECKED - GBM	REVISED -			SCALE:	SHEET NO. OF SHEETS	STA. 38+00.00 TO STA. 41+00.00	CONTRACT NO. 89569		
	PLOT DATE * \$DATE*	DATE -	REVISED -			ILLINOIS FED. AID PROJECT					

FINAL SURVEY	DESIGNED	BY	DATE
NOTE BOOK NO.	PLOTTED		
	TEMPLATE		
	AREAS		
	CHECKED		

ORIGINAL SURVEY	SURVEYED	BY	DATE
NOTE BOOK NO.	PLOTTED		
	TEMPLATE		
	AREAS		
	CHECKED		



FILE NAME *	USER NAME * #USER*	DESIGNED - JDS	REVISED -	STATE OF ILLINOIS DEPARTMENT OF TRANSPORTATION	CITY OF FARMINGTON SRTS CROSS SECTIONS			F.A. RTE.	SECTION	COUNTY	TOTAL SHEETS	SHEET NO.
#FILE#		DRAWN - JDS	REVISED -		SCALE:	SHEET NO.	OF	SHEETS	08-00032-00-SW	FULTON	16	16
		CHECKED - GBM	REVISED -		STA. 41+50.00	TO STA. 43+54.21	CONTRACT NO. 89569					
		DATE -	REVISED -		<small>ILLINOIS FED. AID PROJECT</small>							