

STATE OF ILLINOIS
DEPARTMENT OF TRANSPORTATION

WEST EDGE OF SHOULDER

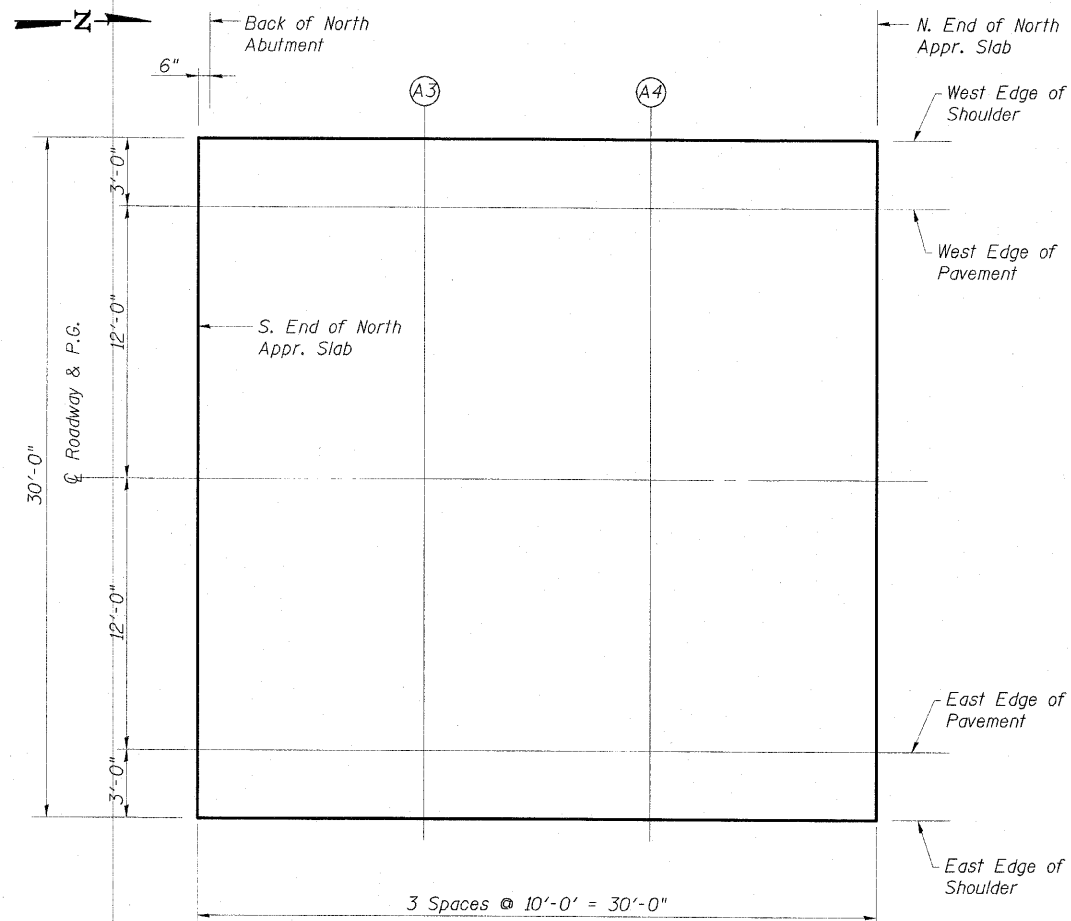
Location	Station	Offset (ft.)	Theoretical Grade Elevations
S. End North Appr. Slab	43+72.75	-15.00	658.54
A3	43+82.75	-15.00	658.54
A4	43+92.75	-15.00	658.54
N. End North Appr. Slab	44+02.75	-15.00	658.54

WEST EDGE OF PAVEMENT

Location	Station	Offset (ft.)	Theoretical Grade Elevations
S. End North Appr. Slab	43+72.75	-12.00	658.60
A3	43+82.75	-12.00	658.60
A4	43+92.75	-12.00	658.60
N. End North Appr. Slab.	44+02.75	-12.00	658.60

℄ ROADWAY & P.G.

Location	Station	Offset (ft.)	Theoretical Grade Elevations
S. End North Appr. Slab	43+72.75	0.00	658.85
A3	43+82.75	0.00	658.85
A4	43+92.75	0.00	658.85
N. End North Appr. Slab	44+02.75	0.00	658.85



PLAN

EAST EDGE OF PAVEMENT

Location	Station	Offset (ft.)	Theoretical Grade Elevations
S. End North Appr. Slab	43+72.75	12.00	658.60
A3	43+82.75	12.00	658.60
A4	43+92.75	12.00	658.60
N. End North Appr. Slab	44+02.75	12.00	658.60

EAST EDGE OF SHOULDER

Location	Station	Offset (ft.)	Theoretical Grade Elevations
S. End North Appr. Slab	43+72.75	15.00	658.54
A3	43+82.75	15.00	658.54
A4	43+92.75	15.00	658.54
N. End North Appr. Slab	44+02.75	15.00	658.54

TOP OF NORTH
APPROACH SLAB ELEVATIONS
STRUCTURE NO. 074-0085

ESCA
CONSULTANTS, INC.

DESIGNED BY:	FMA/MTD	10/09
DRAWN BY:	DWH/HAS	11/09
CHECKED BY:	MTD	11/09
APPROVED BY:	RDP	05/10

E-AS 11-1-09

SHEET NO. 7 25 SHEETS	F.A.S. RTE.	SECTION	COUNTY	TOTAL SHEETS	SHEET NO.
	535	08-00255-00-BR	PIATT	62	31
CONTRACT NO. 91436					
FED. ROAD DIST. NO.		ILLINOIS	FED. AID PROJECT		