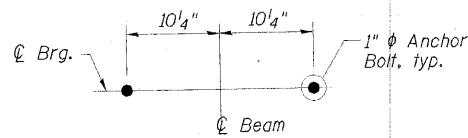
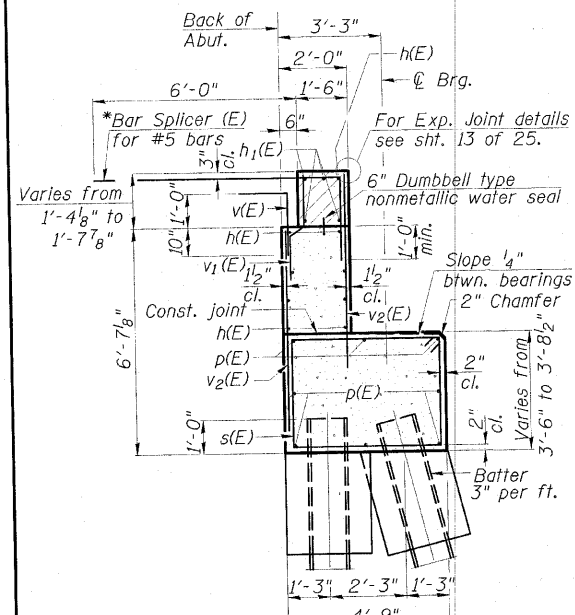


STATE OF ILLINOIS  
DEPARTMENT OF TRANSPORTATION

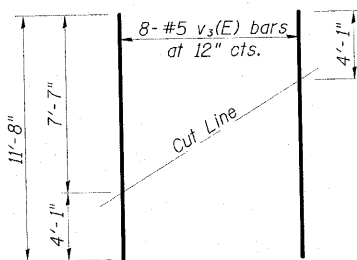
Notes:  
Hatched area to be poured after superstructure false work has been removed. Quantity of concrete included with Concrete Superstructure. Space reinforcement in cap to miss anchor bolts. Pour steps monolithically with cap. For details of piles and Concrete Encasement, see sheet 21 of 25. For details of Bar Splicers, see sheet 22 of 25. Concrete Sealer shall be applied to all exposed surfaces of the backwall, bridge seats, and pile cap. For drainage treatment details, see sheet 2 of 25.



ANCHOR BOLT LAYOUT



SEC. THRU ABUT.



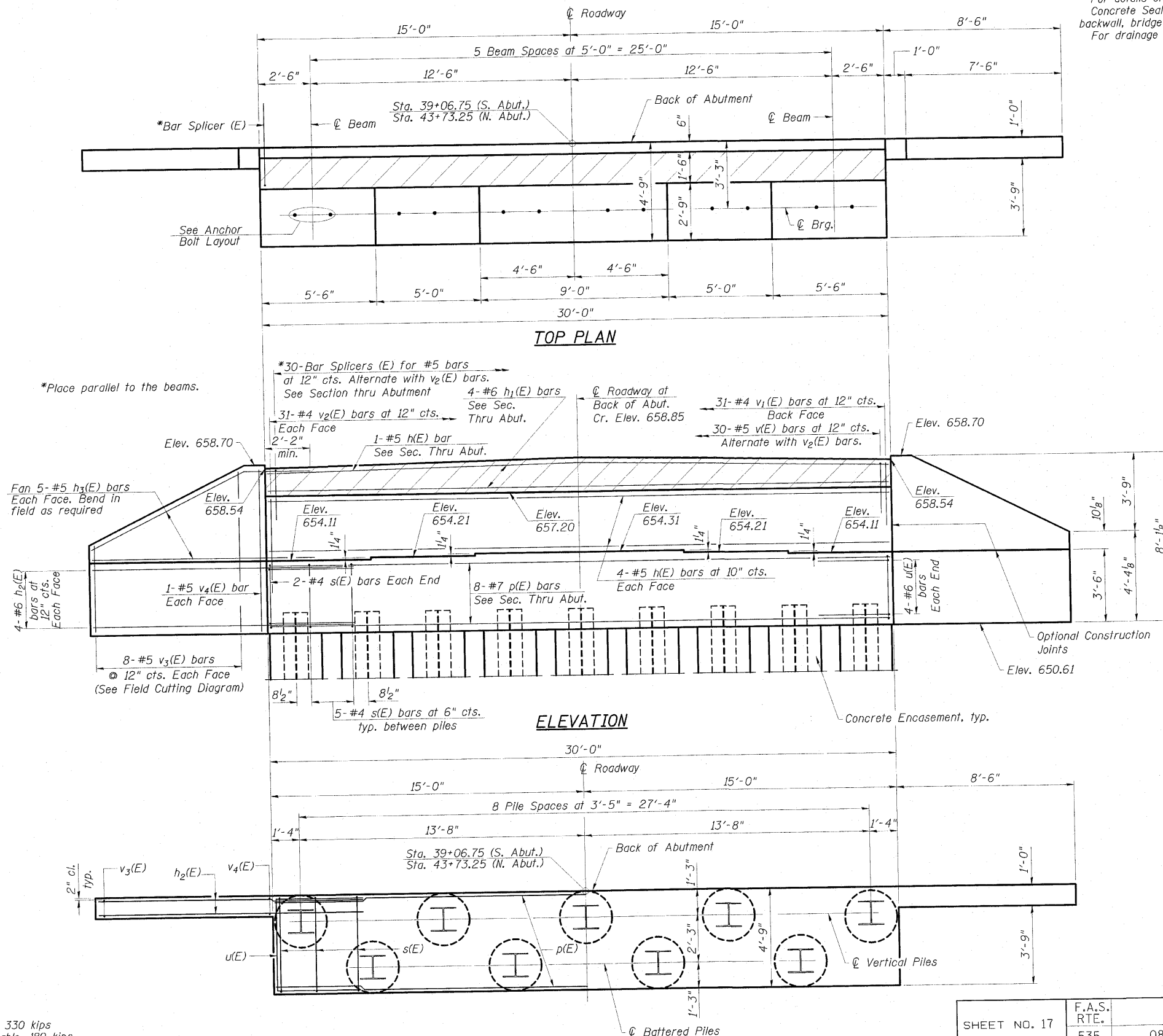
FIELD CUTTING DIAGRAM

Order v3(E) full length. Cut as shown and use remainder of bars in opposite face.

PILE DATA

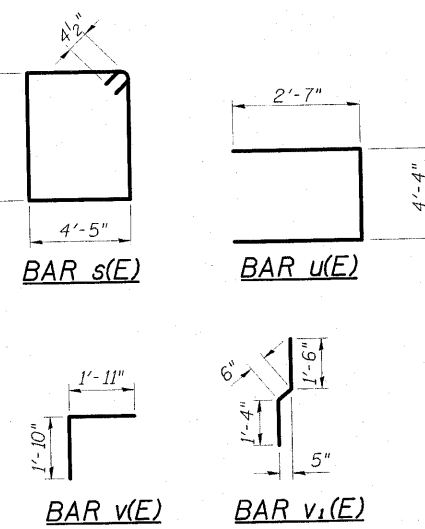
Type: HP14x73  
Nominal Required Bearing: 330 kips  
Factored Resistance Available: 180 kips  
Est. Length: 45' (S. Abut.), 80' (N. Abut.)  
No. Production Piles: 16 (8 each abutment)  
No. Test Piles: 2 (1 each abutment)

**ESCA**  
CONSULTANTS, INC.  
DESIGNED BY: MTD 11/09  
DRAWN BY: DWH/HAS 11/09  
CHECKED BY: MTD 11/09  
APPROVED BY: RDP 05/10



TWO ABUTMENTS  
BILL OF MATERIAL

Bar	No.	Size	Length	Shape
h(E)	18	#5	29'-8"	—
h1(E)	8	#6	29'-8"	—
h2(E)	16	#6	10'-11"	—
h3(E)	20	#5	11'-5"	—
p(E)	16	#7	29'-8"	—
s(E)	88	#4	15'-11"	□
u(E)	16	#6	9'-6"	□
v(E)	60	#5	3'-9"	┌
v1(E)	62	#4	3'-4"	┌
v2(E)	124	#4	5'-10"	—
v3(E)	32	#5	11'-8"	—
v4(E)	8	#5	7'-9"	—
Structure Excavation			Cu. Yd.	210
Concrete Structures			Cu. Yd.	59.4
Concrete Encasement			Cu. Yd.	9.8
Reinforcement Bars, Epoxy Coated			Pound	4,860
Furnishing Steel Piles HP14x73			Foot	1,000
Driving Piles			Foot	1,000
Test Pile Steel HP14x73			Each	2
Concrete Sealer			Sq. Ft.	440



ABUTMENTS  
STRUCTURE NO. 074-0085

SHEET NO. 17 25 SHEETS	F.A.S. RTE.	SECTION	COUNTY	TOTAL SHEETS	SHEET NO.
	535	08-00255-00-BR	PIATT	62	41
FED. ROAD DIST. NO.			ILLINOIS FED. AID PROJECT		
CONTRACT NO. 91436					

PLAN - PILE CAP