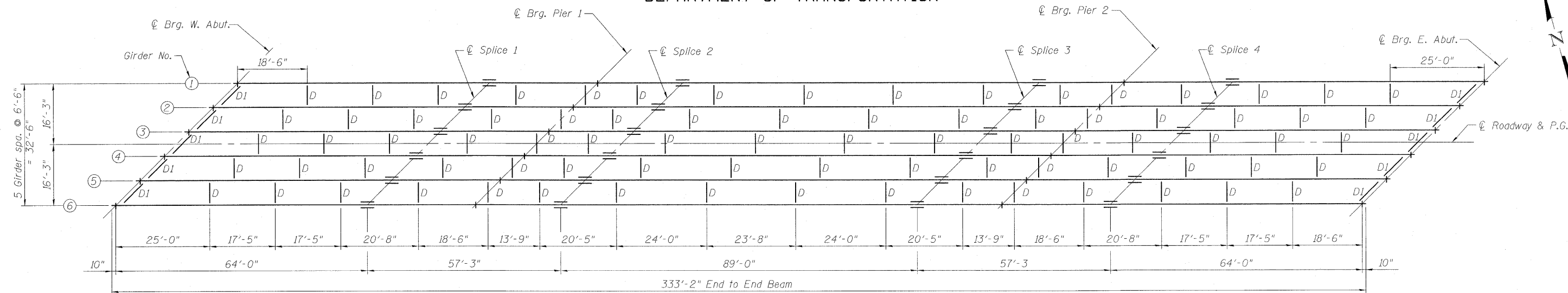
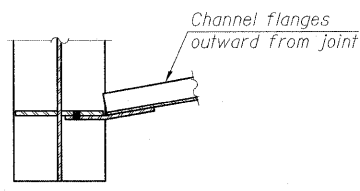
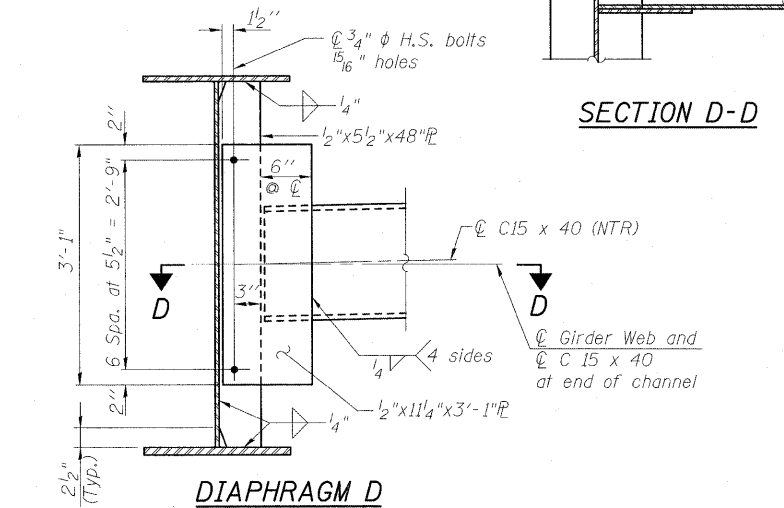
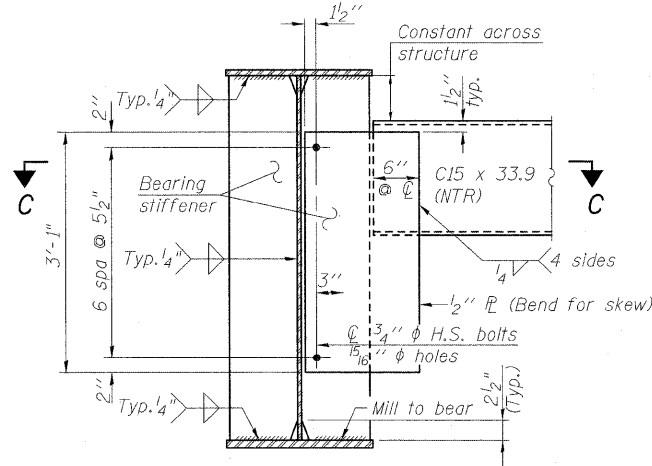
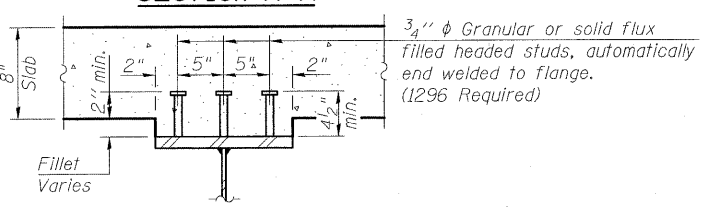
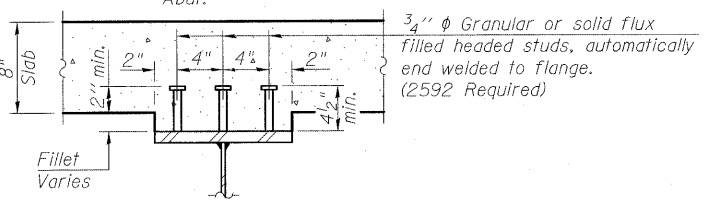
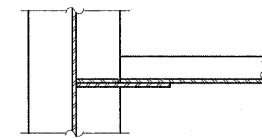
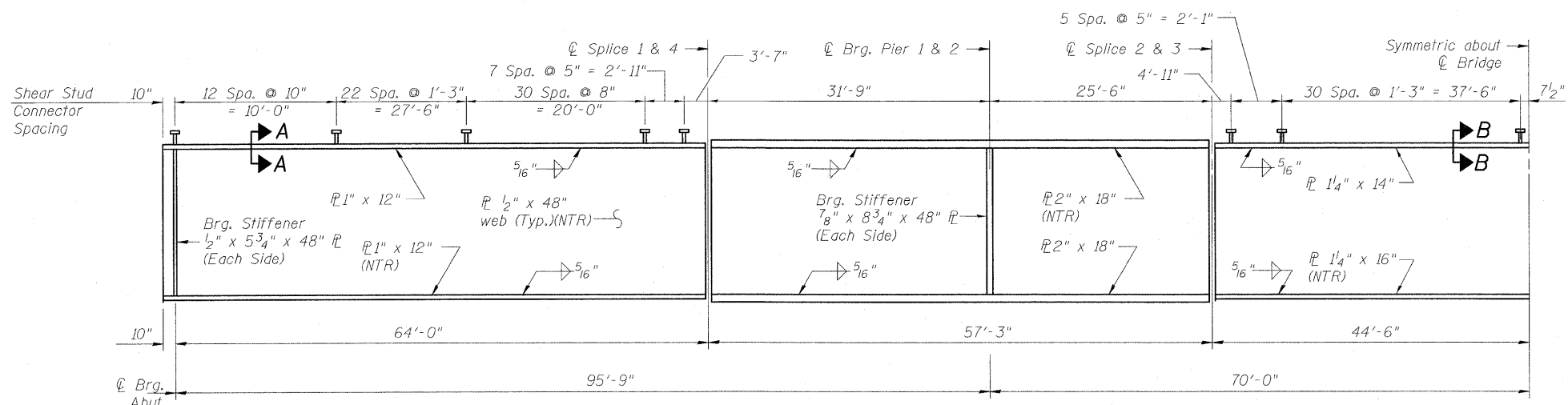


STATE OF ILLINOIS
DEPARTMENT OF TRANSPORTATION



Notes:
Two hardened washers required for each set of oversized holes.
All diaphragms between beams or girders shall be installed with erection pins and bolts in accordance with the erection plan approved by the Engineer. Individual cross frames or diaphragms at supports may be temporarily disconnected to install bearing anchor rods.
See Sheet 13 of 27 for Bearing bolt hole placement.
Load carrying components designated "NTR" shall conform to the Supplemental Requirements for Notch Toughness, Zone 2.
See sheet 12 of 27 for bearing Stiffeners.



* TOP OF WEB ELEVATIONS

Location	℄ Brg. W. Abut.	℄ Splice 1	℄ Pier 1	℄ Splice 2	℄ Splice 3	℄ Pier 2	℄ Splice 4	℄ Brg. E. Abut.
Girder 1	458.05	457.98	457.81	457.82	457.13	456.80	456.41	455.50
Girder 2	458.14	458.11	457.96	457.97	457.32	456.99	456.63	455.74
Girder 3	458.23	458.21	458.06	458.10	457.19	457.18	456.82	455.96
Girder 4	458.17	458.21	458.06	458.12	457.55	457.25	456.91	456.07
Girder 5	458.06	458.11	457.99	458.04	457.51	457.19	456.89	456.07
Girder 6	457.91	457.98	457.86	457.94	457.44	457.12	456.84	456.01

* "For Fabrication Only"

DESIGNED	B.B.
CHECKED	C.J.F.
DRAWN	J.G.
CHECKED	C.J.F. & B.B.

Note: Two hardened washers required for each set of oversized holes.

BERNARDIN LOCHMUELLER & ASSOCIATES, INC.
3 Oak Drive
Maryville, IL 62062-5635
Local (618) 282-4665
Fax 618-282-4666

STRUCTURAL STEEL
ILLINOIS ROUTE 1
OVER NORFOLK SOUTHERN RR
STA. 757+97.66

Rev. Sheet 9-7-10

SHEET NO. 11	F.A.P. RTE. 332	SECTION 103B-1	COUNTY WABASH	TOTAL SHEETS 90	SHEET NO. 45
27 SHEETS	SN 093-0023		CONTRACT NO. 94754		
FED. ROAD DIST. NO. 7 ILLINOIS FED. AID PROJECT 332					

11/5/10 AM 7/15/2010 11:54:40 AM