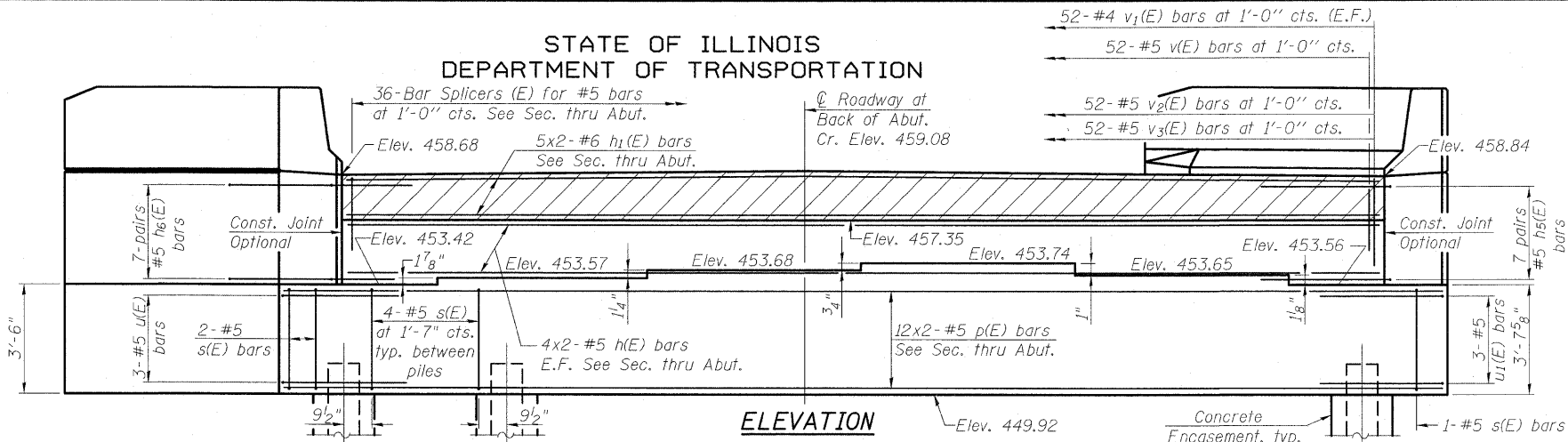
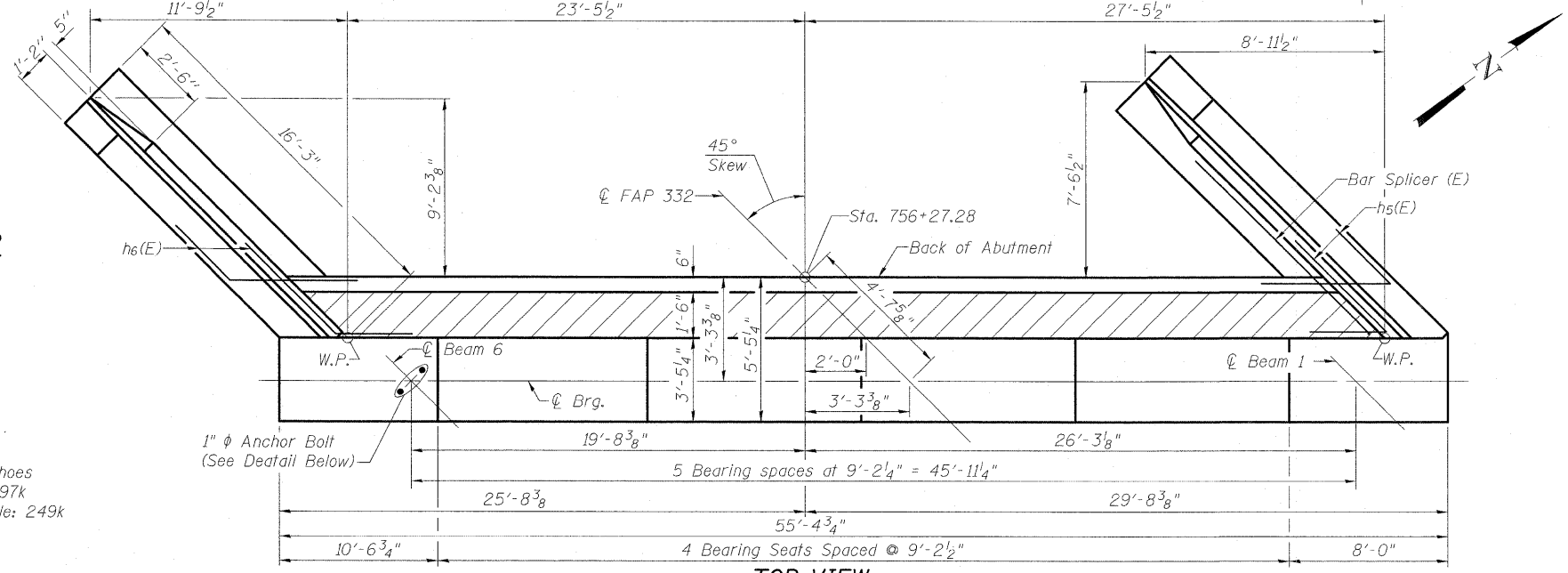


STATE OF ILLINOIS
DEPARTMENT OF TRANSPORTATION

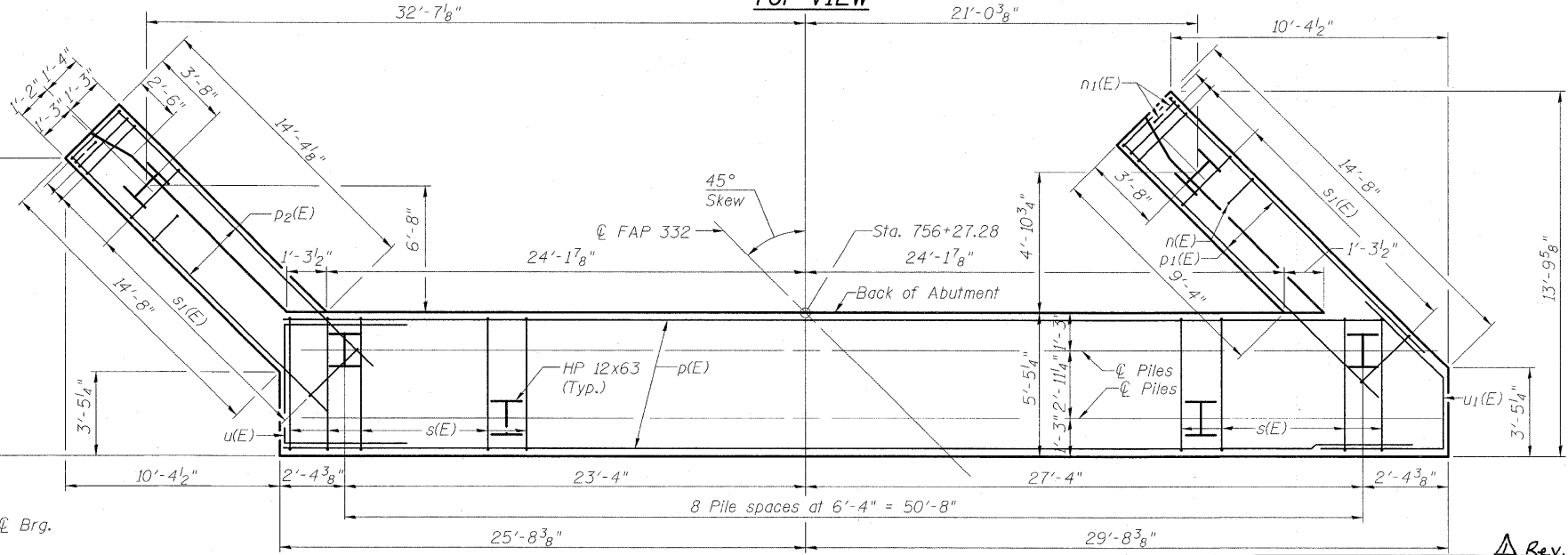


Notes:
Top of Pile Elev. = 451.92
For details of Bar Splicers, see sheet 21 of 27.
For details of piles and Concrete Encasement, see sheet 24 of 27.
For concrete sealer application see sheet 17 of 27.
E.F. indicates Each Face
For Section Thru Abutment and Wingwalls see sheet 16 of 27.

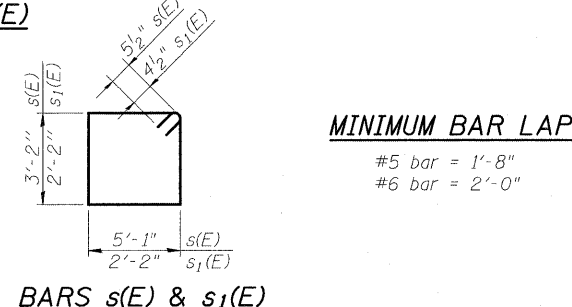
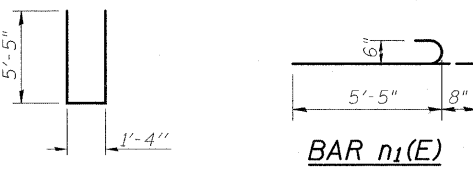
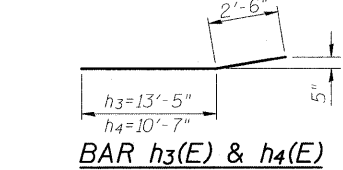
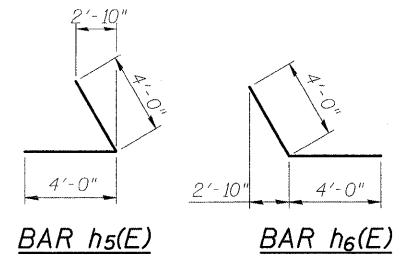


WEST ABUTMENT
BILL OF MATERIAL

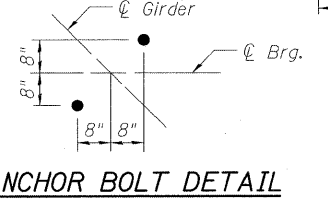
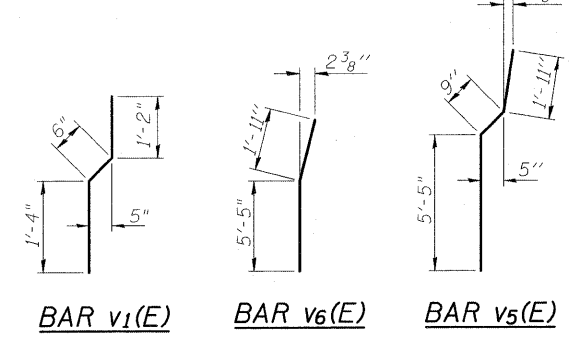
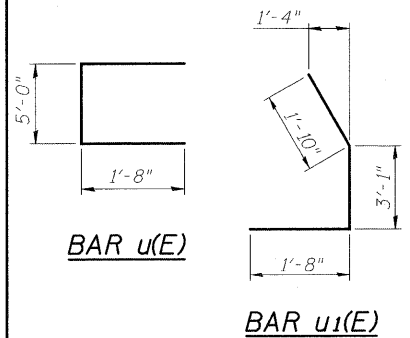
Bar	No.	Size	Length	Shape
h(E)	16	#5	26'-2"	—
h1(E)	10	#6	26'-4"	—
h2(E)	24	#4	14'-4"	—
h3(E)	8	#4	15'-11"	—
h4(E)	8	#4	13'-1"	—
h5(E)	14	#5	8'-0"	—
h6(E)	14	#5	8'-0"	—
n(E)	26	#6	12'-2"	—
n1(E)	12	#6	6'-1"	—
p(E)	24	#5	28'-7"	—
p1(E)	6	#7	14'-4"	—
p2(E)	6	#7	15'-11"	—
s(E)	35	#5	17'-5"	—
s1(E)	30	#4	9'-5"	—
u(E)	3	#5	8'-4"	—
u1(E)	3	#5	6'-7"	—
v(E)	52	#5	5'-7"	—
v1(E)	52	#4	3'-0"	—
v2(E)	52	#5	7'-2"	—
v3(E)	52	#5	2'-9"	—
v4(E)	32	#6	7'-9"	—
v5(E)	26	#6	8'-0"	—
v6(E)	6	#6	7'-4"	—
Structure Excavation			Cu. Yd.	124.9
Concrete Structures			Cu. Yd.	72.3
Reinforcement Bars, Epoxy Coated			Pound	5690
Furnishing Steel Piles HP 12x63			Foot	418
Driving Piles			Foot	418
Concrete Encasement			Cu. Yd.	3.8
Pile Shoes			Each	11
Concrete Sealer			Sq. Ft.	542.0
Bar Splicers			Each	36



WEST ABUTMENT
ILLINOIS ROUTE 1
OVER NORFOLK SOUTHERN RR
STA. 757+97.66



PILE DATA
Type: HP 12x63 with Pile Shoes
Nominal Required Bearing: 497k
Factored Resistance Available: 249k
Est. Length: 38'-0"
No. Production Piles: 11
No. Test Piles: None



DESIGNED	B.B.
CHECKED	C.J.F.
DRAWN	J.G.
CHECKED	C.J.F. & B.B.

PLAN-PILE CAP
BERNARDIN
LOCHMUELLER &
ASSOCIATES, INC.

3 Oak Drive
Maryville, IL 62062-5636
Local (618) 288-4666
Fax 618-288-4666

SHEET NO. 14	F.A.P. RTE. 332	SECTION 103B-1	COUNTY WABASH	TOTAL SHEETS 90	SHEET NO. 48
27 SHEETS		SN 093-0023	CONTRACT NO. 94754		
		FED. ROAD DIST. NO. 7	ILLINOIS FED. AID PROJECT 332		

1654633 AM 7/15/2010 \D:\projects\030023-94754.dgn