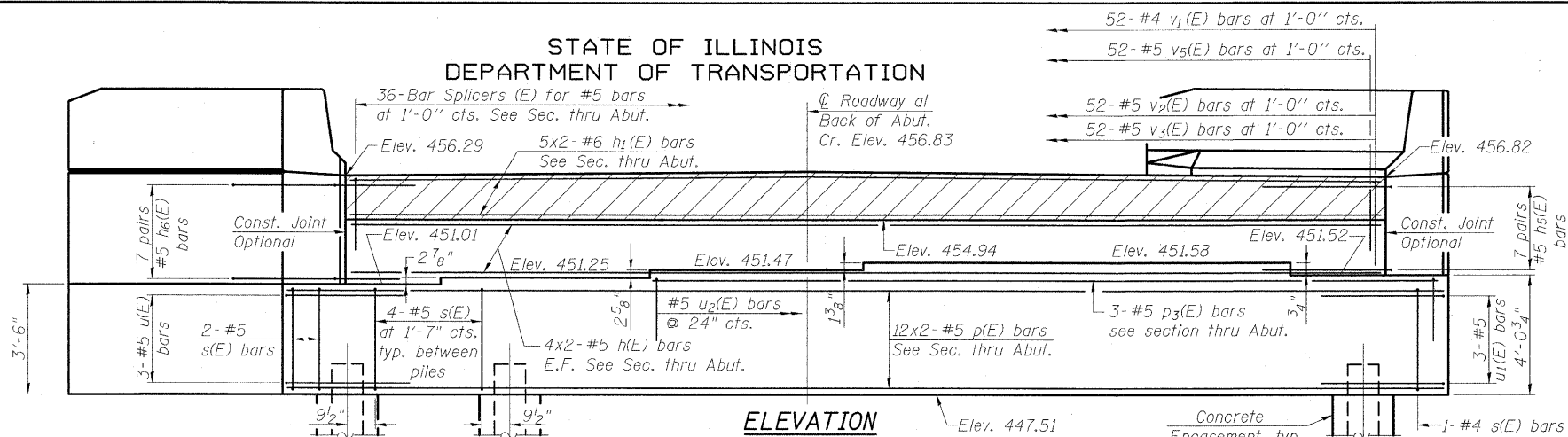
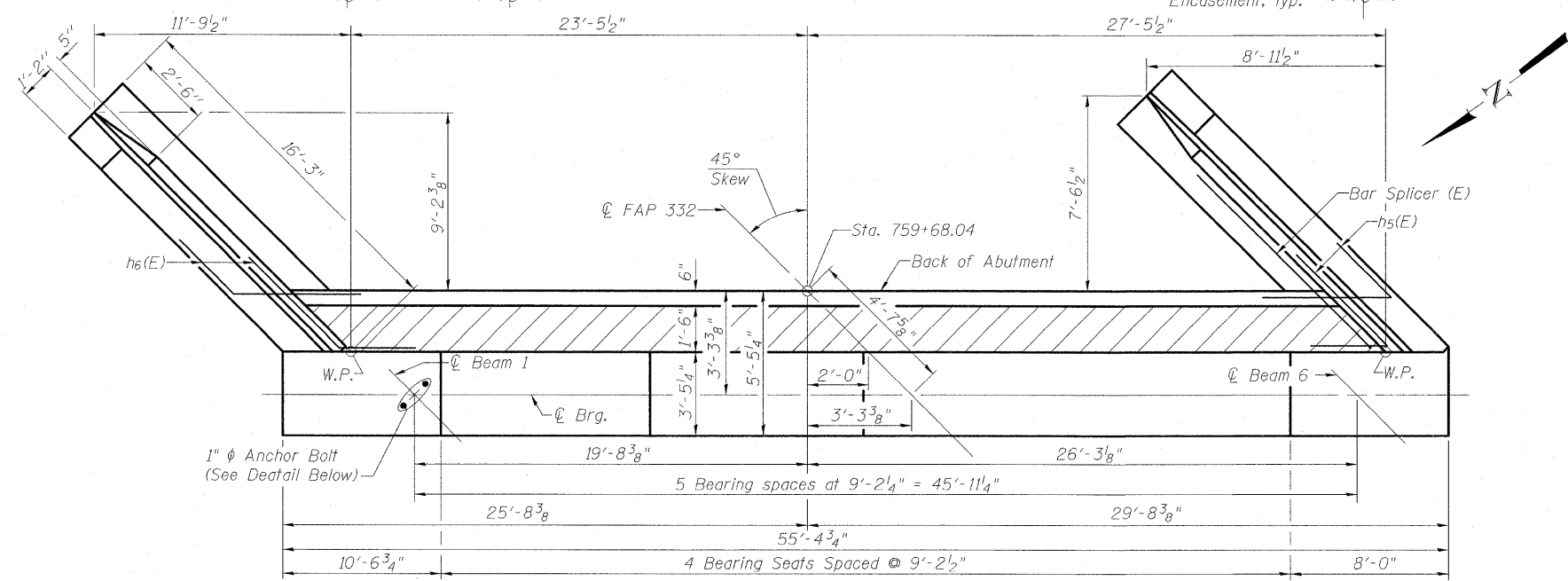


STATE OF ILLINOIS
DEPARTMENT OF TRANSPORTATION



Notes:
Top of Pile Elev. = 449.51
For details of Bar Splicers, see sheet 21 of 27.
For details of piles and Concrete Encasement, see sheet 24 of 27.
For additional details of reinforcement, see sheet 14 of 27.
For concrete sealer application see sheet 17 of 27.
For Section Thru Abutment and Wingwalls see sheet 17 of 27.
E.F. indicates Each Face



EAST ABUTMENT
BILL OF MATERIAL

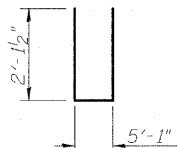
Bar	No.	Size	Length	Shape
h(E)	16	#5	26'-2"	—
h1(E)	10	#6	26'-4"	—
h2(E)	24	#4	14'-4"	—
h3(E)	8	#4	15'-11"	—
h4(E)	8	#4	13'-1"	—
h5(E)	14	#5	8'-0"	—
h6(E)	14	#5	8'-0"	—
n(E)	26	#6	12'-2"	—
n1(E)	12	#6	6'-1"	—
p(E)	24	#5	28'-7"	—
p1(E)	6	#7	14'-4"	—
p2(E)	6	#7	15'-11"	—
p3(E)	3	#5	35'-3"	—
s(E)	35	#5	17'-5"	—
s1(E)	30	#4	9'-5"	—
u(E)	3	#5	8'-4"	—
u1(E)	3	#5	6'-7"	—
u2(E)	19	#5	9'-4"	—
v(E)	52	#5	5'-7"	—
v1(E)	52	#4	3'-0"	—
v2(E)	52	#5	7'-2"	—
v3(E)	52	#5	2'-9"	—
v4(E)	32	#6	7'-9"	—
v5(E)	26	#6	8'-0"	—
v6(E)	6	#6	7'-4"	—
Structure Excavation		Cu. Yd.	155.1	
Concrete Structures		Cu. Yd.	73.1	
Reinforcement Bars, Epoxy Coated		Pound	5990	
Furnishing Steel Piles HP 12x63		Foot	506	
Driving Piles		Foot	506	
Concrete Encasement		Cu. Yd.	3.8	
Pile Shoes		Each	11	
Concrete Sealer		Sq. Ft.	542.0	
Bar Splicers		Each	36	

MINIMUM BAR LAP

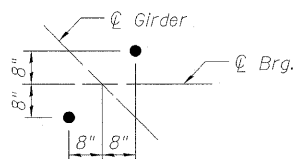
#5 bar = 1'-8"
#6 bar = 2'-0"

PILE DATA

Type: HP 12x63
Nominal Required Bearing: 497k
Factored Resistance Available: 249k
Est. Length: 46'-0"
No. Production Piles: 11
No. Test Piles: None



BAR u2(E)



ANCHOR BOLT DETAIL

DESIGNED	B.B.
CHECKED	C.J.F.
DRAWN	J.G.
CHECKED	C.J.F. & B.B.

PLAN-PILE CAP



BERNARDIN
LOCHMUELLER &
ASSOCIATES, INC.

3 Oak Drive
Marville, IL 62459-5635
Local: (618) 288-4665
Fax: 618-288-4666

SHEET NO. 15 27 SHEETS	F.A.P. RTE. 332	SECTION 103B-1	COUNTY WABASH	TOTAL SHEETS 90	SHEET NO. 49
	SN 093-0023		CONTRACT NO. 94754		
FED. ROAD DIST. NO. 7 ILLINOIS FED. AID PROJECT 332					

EAST ABUTMENT
ILLINOIS ROUTE 1
OVER NORFOLK SOUTHERN RR
STA. 757+97.66

Rev. Sheet 9-7-10

12/9/26 PM 1/11/2000 \sbl\lgs\0930023\94754.dgn