

STATE OF ILLINOIS
DEPARTMENT OF TRANSPORTATION

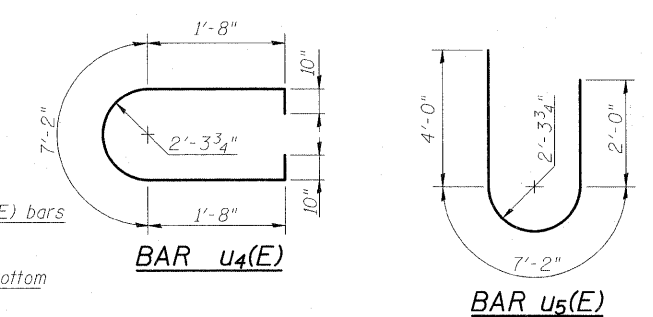
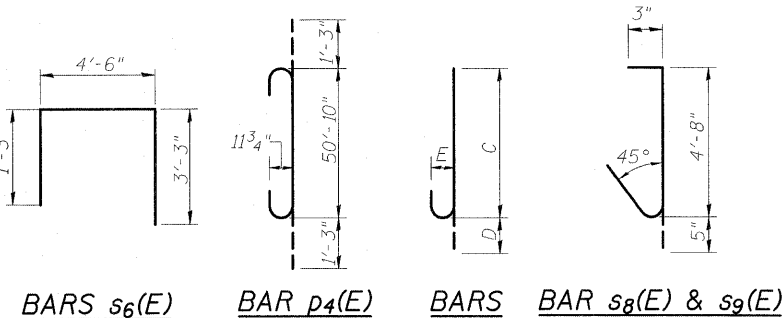
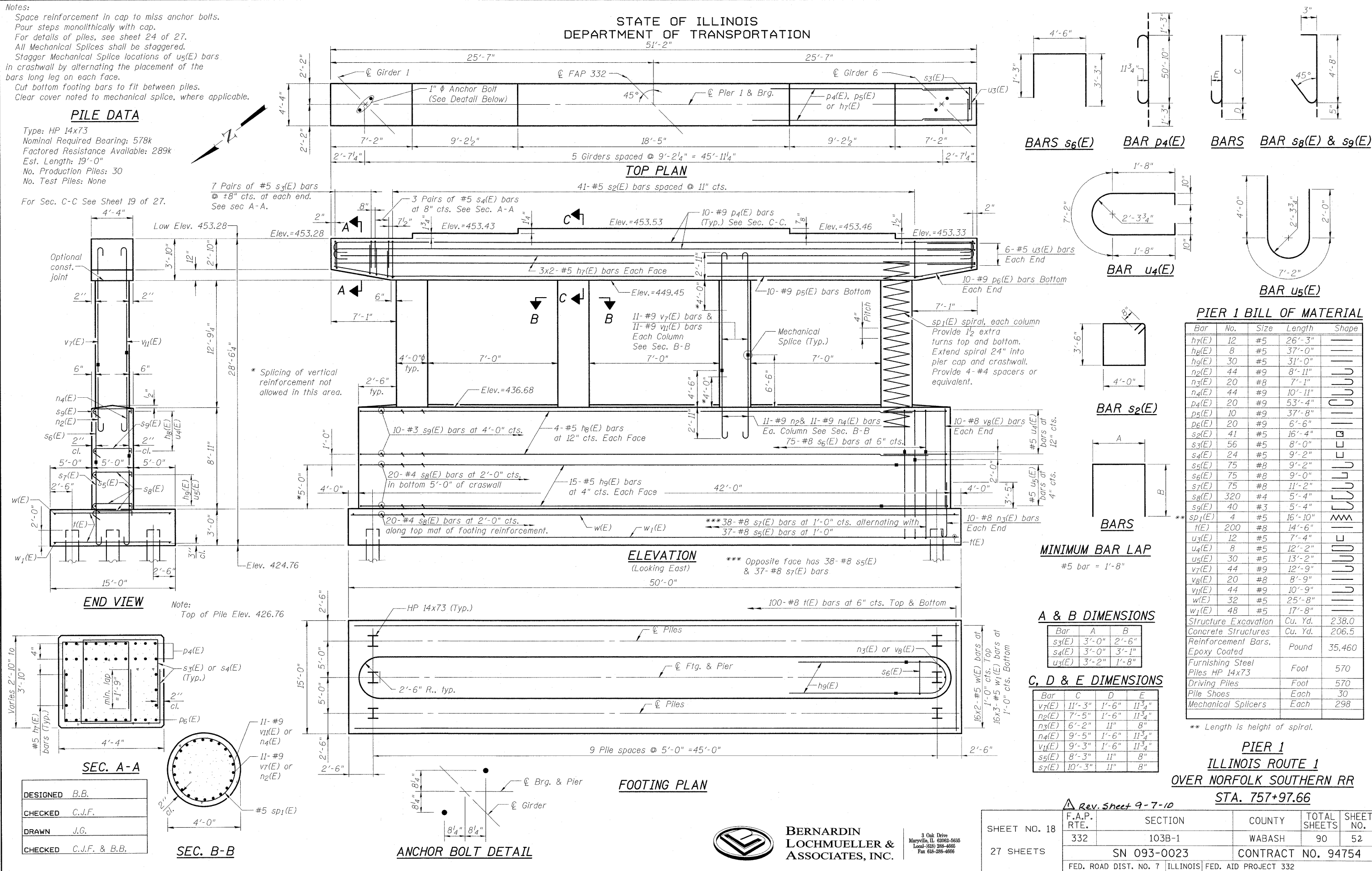
Notes:
Space reinforcement in cap to miss anchor bolts.
Pour steps monolithically with cap.
For details of piles, see sheet 24 of 27.
All Mechanical Splices shall be staggered.
Stagger Mechanical Splice locations of u₅(E) bars in crashwall by alternating the placement of the bars long leg on each face.
Cut bottom footing bars to fit between piles.
Clear cover noted to mechanical splice, where applicable.

PILE DATA

Type: HP 14x73
Nominal Required Bearing: 578k
Factored Resistance Available: 289k
Est. Length: 19'-0"
No. Production Piles: 30
No. Test Piles: None

For Sec. C-C See Sheet 19 of 27.

7 Pairs of #5 s₃(E) bars
@ 8" cts. at each end.
See sec A-A.



PIER 1 BILL OF MATERIAL

Bar	No.	Size	Length	Shape
h7(E)	12	#5	26'-3"	—
h8(E)	8	#5	37'-0"	—
h9(E)	30	#5	31'-0"	—
n2(E)	44	#9	8'-11"	—
n3(E)	20	#8	7'-1"	—
n4(E)	44	#9	10'-11"	—
p4(E)	20	#9	53'-4"	—
p5(E)	10	#9	37'-8"	—
p6(E)	20	#9	6'-6"	—
s2(E)	41	#5	16'-4"	—
s3(E)	56	#5	8'-0"	—
s4(E)	24	#5	9'-2"	—
s5(E)	75	#8	9'-2"	—
s6(E)	75	#8	9'-0"	—
s7(E)	75	#8	11'-2"	—
s8(E)	320	#4	5'-4"	—
s9(E)	40	#3	5'-4"	—
sp1(E)	4	#5	16'-10"	—
t(E)	200	#8	14'-6"	—
u3(E)	12	#5	7'-4"	—
u4(E)	8	#5	12'-2"	—
u5(E)	30	#5	13'-2"	—
v7(E)	44	#9	12'-9"	—
v8(E)	20	#8	8'-9"	—
v11(E)	44	#9	10'-9"	—
w(E)	32	#5	25'-8"	—
w1(E)	48	#5	17'-8"	—
Structure Excavation	Cu. Yd.		238.0	
Concrete Structures	Cu. Yd.		206.5	
Reinforcement Bars, Epoxy Coated	Pound		35,460	
Furnishing Steel Piles HP 14x73	Foot		570	
Driving Piles	Foot		570	
Pile Shoes	Each		30	
Mechanical Splicers	Each		298	

** Length is height of spiral.

**PIER 1
ILLINOIS ROUTE 1
OVER NORFOLK SOUTHERN RR
STA. 757+97.66**

MINIMUM BAR LAP

#5 bar = 1'-8"

A & B DIMENSIONS

Bar	A	B
s3(E)	3'-0"	2'-6"
s4(E)	3'-0"	3'-1"
u3(E)	3'-2"	1'-8"

C, D & E DIMENSIONS

Bar	C	D	E
v7(E)	11'-3"	1'-6"	11'-3"
n2(E)	7'-5"	1'-6"	11'-3"
n3(E)	6'-2"	11"	8"
n4(E)	9'-5"	1'-6"	11'-3"
v11(E)	9'-3"	1'-6"	11'-3"
s5(E)	8'-3"	11"	8"
s7(E)	10'-3"	11"	8"

DESIGNED	B.B.
CHECKED	C.J.F.
DRAWN	J.G.
CHECKED	C.J.F. & B.B.

SHEET NO. 18 27 SHEETS	F.A.P. RTE. 332	SECTION 103B-1	COUNTY WABASH	TOTAL SHEETS 90	SHEET NO. 52
	SN 093-0023		CONTRACT NO. 94754		
FED. ROAD DIST. NO. 7 ILLINOIS FED. AID PROJECT 332					

**BERNARDIN
LOCHMUELLER &
ASSOCIATES, INC.**
3 Oak Drive
Maryville, IL 62062-5635
Local: (618) 288-4666
Fax: (618) 288-4666

11/5/44-3 AM 7/15/2010 10:10:06 0930023-94754.dgn