

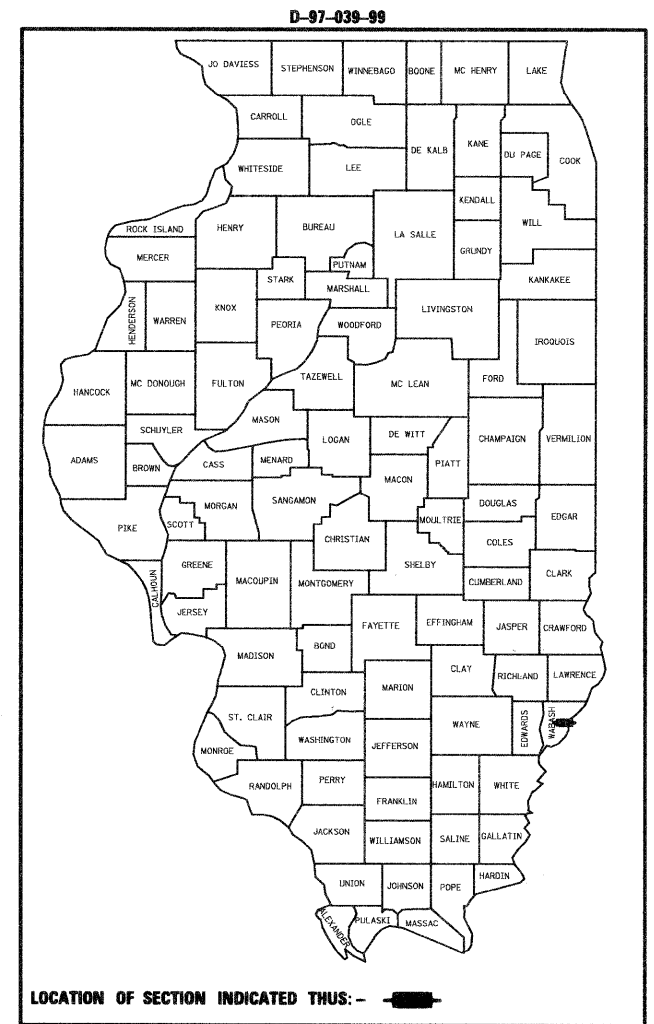
F.A.P. RTE.	SECTION	COUNTY	TOTAL SHEETS	SHEET NO.
332	103B-1	WABASH	90*	1
FED. ROAD DIST. NO.	ILLINOIS	CONTRACT NO. 94754		
*90+4=94				

**STATE OF ILLINOIS**  
**DEPARTMENT OF TRANSPORTATION**  
**DIVISION OF HIGHWAYS**

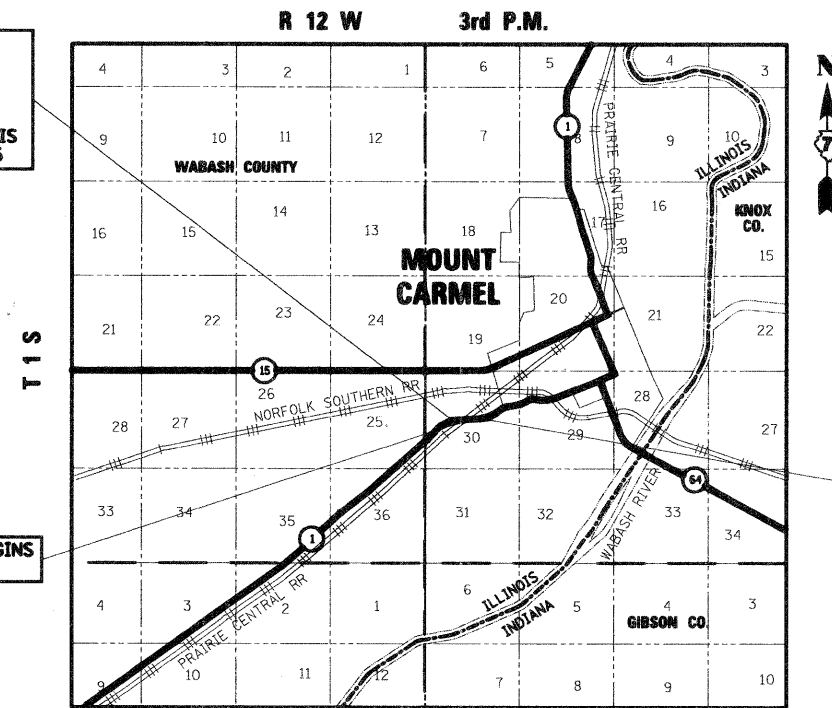
**PROPOSED**  
**HIGHWAY PLANS**

**FAP ROUTE 332 (ILLINOIS ROUTE 1)**  
**SECTION 103B-1**  
**PROJECT: BRF-0332 (095)**  
**WABASH COUNTY**  
**BRIDGE REPLACEMENT**  
**C-97-113-99**

FOR INDEX OF SHEETS, SEE SHEET NO. 2

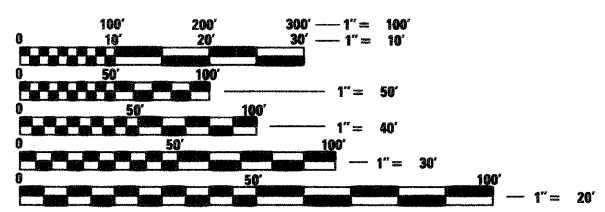


SN 093-0023  
SECTION 103B-1 INCLUDES THE COMPLETE REMOVAL OF THE EXISTING 4 SPAN STRUCTURE AND REPLACEMENT WITH A NEW 3 SPAN CONTINUOUS COMPOSITE STRUCTURE ON REINFORCED CONCRETE ABUTMENTS AND PIERS, BACK TO BACK ABUTMENT OF 340'-9 1/4", CARRYING FAP 332 (ILLINOIS ROUTE 1) OVER NORFOLK SOUTHERN RAILROAD STA 757+97.66



SECTION 103B-1 BEGINS STA 748+00.00

SECTION 103B-1 ENDS STA 770+00.00



FULL SIZE PLANS HAVE BEEN PREPARED USING STANDARD ENGINEERING SCALES. REDUCED SIZED PLANS WILL NOT CONFORM TO STANDARD SCALES. IN MAKING MEASUREMENTS ON REDUCED PLANS, THE ABOVE SCALES MAY BE USED.

J.U.L.I.E.  
JOINT UTILITY LOCATION INFORMATION FOR EXCAVATION  
1-800-892-0123  
OR 811

**DESIGN DESIGNATION**

FAP ROUTE 332 OTHER PRINCIPAL ARTERIAL  
ADT 3150 (2008) 11% TRUCKS

**PROJECT ENGINEER**  
**PROJECT MANAGER MARK DAUGHERTY**

**CONTRACT NO. 94754**

**MOUNT CARMEL TOWNSHIP**



**LOCATION MAP**

GROSS SECTION LENGTH = 2200 FEET = 0.417 MILES  
NET SECTION LENGTH = 2200 FEET = 0.417 MILES



**STATE OF ILLINOIS**  
**DEPARTMENT OF TRANSPORTATION**  
**DIVISION OF HIGHWAYS**

SUBMITTED October 6 20 09  
Rose Z Dankel  
DEPUTY DIRECTOR OF HIGHWAYS, REGION ENGINEER

May 7 20 10  
Scott E. Stitt, P.E.  
Acting ENGINEER OF DESIGN AND ENVIRONMENT

May 7 20 10  
Christine M. Rodley  
DIRECTOR OF HIGHWAYS, CHIEF ENGINEER



**BERNARDIN \* LOCHMUELLER & ASSOCIATES, INC.**  
3 OAK DRIVE  
MARYVILLE, ILLINOIS 62062  
PHONE (618) 288-4665  
FAX (618) 288-4666

**PRINTED BY THE AUTHORITY**  
**OF THE STATE OF ILLINOIS**