

GROUND COORDINATES FOR FAP ROUTE 332 (ILLINOIS ROUTE 1)

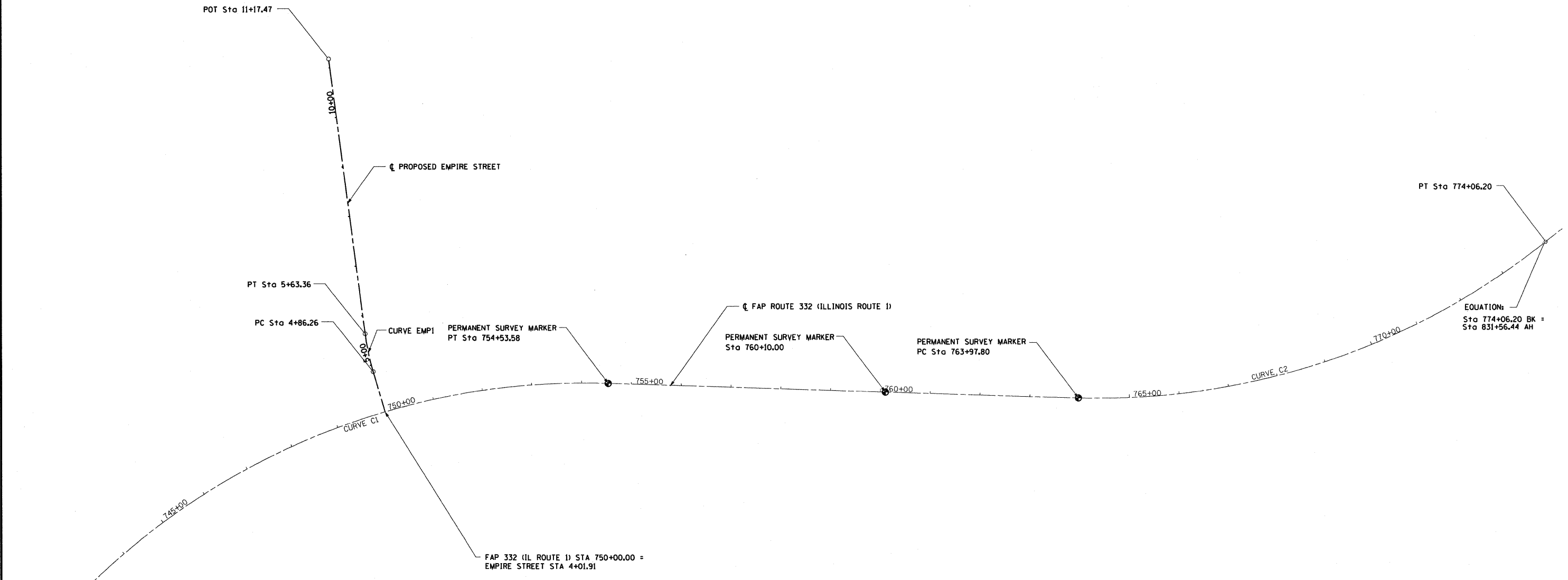
DESCRIPTION	COORDINATE	
	NORTHING	EASTING
PC STA 741+33.18	631543.04	1138296.98
PT STA 754+53.58	631903.95	1139518.93
PC STA 763+97.80	631740.67	1140448.93
PT STA 774+06.20	631915.36	1141421.12

GROUND COORDINATES FOR FAP ROUTE 332 (ILLINOIS ROUTE 1)
PERMANENT SURVEY MARKERS

DESCRIPTION	COORDINATE	
	NORTHING	EASTING
PT STA 754+53.58	631903.95	1139518.93
STA 760+10.00	631807.33	1140066.97
PT STA 763+97.80	631740.67	1140448.93

GROUND COORDINATES FOR PROPOSED EMPIRE STREET

DESCRIPTION	COORDINATE	
	NORTHING	EASTING
POT STA 4+01.91	631910.92	1139067.30
PC STA 4+86.26	631994.41	1139055.28
PI STA 5+24.88	632032.64	1139049.78
PT STA 5+63.36	632071.26	1139050.22
POT STA 11+17.47	632625.34	1139056.47



<p>EXIST. CURVE C1 PI STA. = 748+44.49 $\Delta = 52^{\circ} 49' 26''$ (RT) $D = 4^{\circ} 00' 02''$ $R = 1,432.18'$ $T = 711.31'$ $L = 1,320.40'$ $E = 166.92'$ $e = 6.00\%$ $T.R. = 40.00'$ $S.E. RUN = 160.00'$ P.C. STA. = 741+33.18 P.T. STA. = 754+53.58</p>	<p>EXIST. CURVE C2 PI STA. = 769+23.86 $\Delta = 40^{\circ} 17' 15''$ (LT) $D = 3^{\circ} 59' 43''$ $R = 1,434.12'$ $T = 526.06'$ $L = 1,008.40'$ $E = 93.44'$ $e = 6.00\%$ $T.R. = 40.00'$ $S.E. RUN = 160.00'$ P.C. STA. = 763+97.80 P.T. STA. = 774+06.20</p>	<p>PROP. CURVE EMP1 PI STA. = 5+24.88 $\Delta = 8^{\circ} 50' 03''$ (RT) $D = 11^{\circ} 27' 33''$ $R = 500.00'$ $T = 38.62'$ $L = 77.09'$ $E = 1.49'$ P.C. STA = 4+86.26 P.T. STA = 5+63.36</p>
--	---	---

