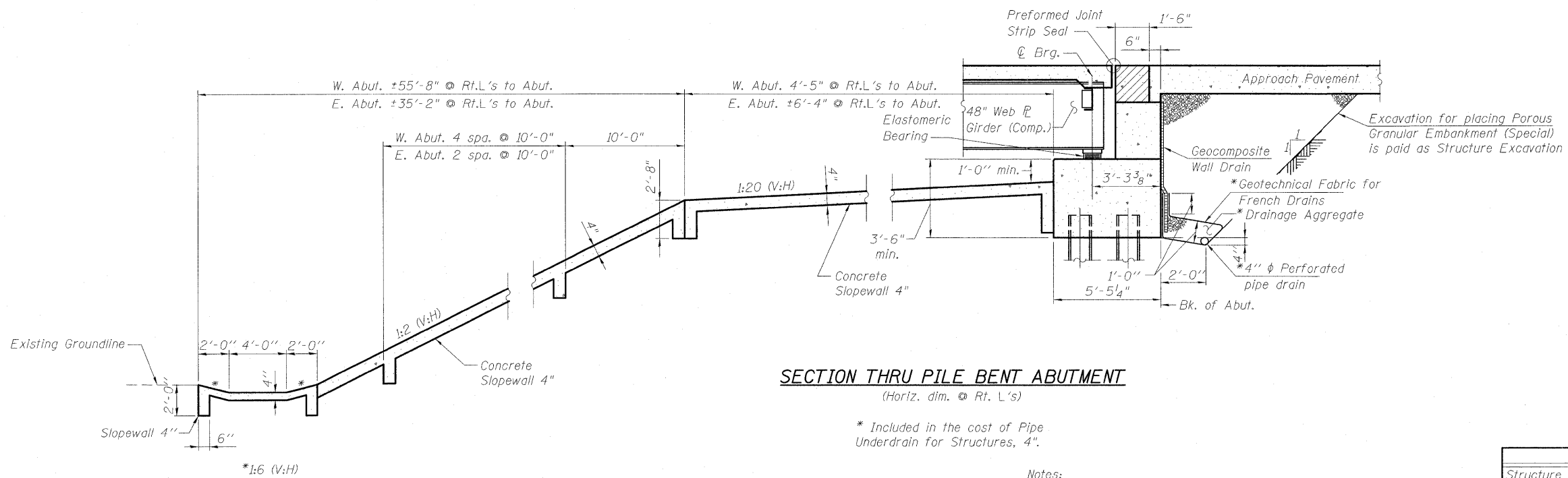


STATE OF ILLINOIS
DEPARTMENT OF TRANSPORTATION



SECTION THRU PILE BENT ABUTMENT

(Horiz. dim. @ Rt. L's)

* Included in the cost of Pipe Underdrain for Structures, 4".

Notes:

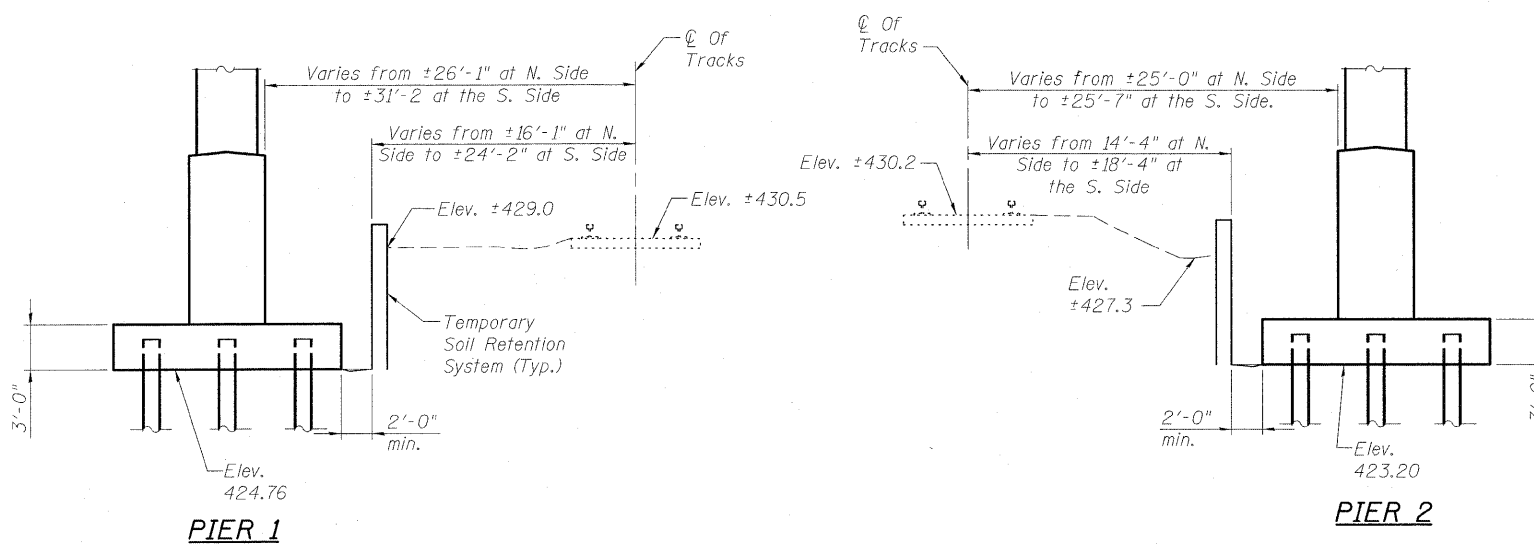
All drainage system components shall extend to 2'-0" from the end of each wingwall except an outlet pipe shall extend until intersecting with the bottom of slope. The pipes shall drain into concrete headwalls. (See Article 601.05 of the Standard Specifications and Highway Standard 601101).

For preformed joint strip seal dimensions see Sheet 20 of 27.

Slope wall shall be reinforced with welded wire fabric, 6 in. x 6 in. - W4.0 x W4.0, weighing 58 lbs. per 100 sq. ft.

TOTAL BILL OF MATERIAL

ITEM	UNIT	SUPER	SUB	TOTAL
Structure Excavation	Cu. Yd.		756.0	756.0
Concrete Superstructure	Cu. Yd.	449.1		449.1
Concrete Structures	Cu. Yd.		567.4	567.4
Removal of Existing Structures	Each	1		1
Reinforcement Bars, Epoxy Coated	Pound	109,080	83,420	192,500
Protective Coat	Sq. Yd.	1672		1672
Name Plates	Each	1		1
Porous Granular Embankment (Special)	Cu. Yd.		196.2	196.2
Stud Shear Connectors	Each	3888		3888
Bar Splicers	Each	72		72
Furnishing and Erecting Structural Steel	L. Sum	1		1
Furnishing Steel Piles HP 14x73	Foot		1110	1110
Furnishing Steel Piles HP 12x63	Foot		924	924
Driving Piles	Foot		2034	2034
Pile Shoes	Each		82	82
Bridge Deck Grooving	Sq. Yd.	1263		1263
Geocomposite Wall Drain	Sq. Yd.		77	77
Pipe Underdrains for Structures, 4"	Foot		90	90
Protective Shield	Sq. Yd.	621.1		621.1
Drainage Scupper, DS-11	Each		4	4
Slope Wall, 4"	Sq. Yd.		647	647
Anchor Bolts, 1"	Each	48		48
Concrete Encasement	Cu. Yd.		7.7	7.7
Elastomeric Bearing Assembly Type 1	Each	12		12
Concrete Sealer	Sq. Ft.		1084	1084
Preformed Joint Strip Seal	Foot	106		106
Temporary Soil Retention System	Sq. Ft.		840	840
Mechanical Splicers	Each		596	596



LIMITS OF TEMPORARY SOIL RETENTION SYSTEM

Notes:

A cantilevered sheet piling design does not appear feasible and additional members or other retention systems may be necessary. The Contractor shall submit a Temporary Soil Retention System design including plan details and calculations for review and acceptance by the Engineer.

The Temporary Soil Retention System must be designed for the effects of the train loading.

The length of the Temporary Soil Retention System, shall extend a minimum of 10'-0" past the pier ends.

See Utility Plans for location of existing water line near Pier 1.

DESIGNED	B.B.
CHECKED	C.J.F.
DRAWN	J.G.
CHECKED	C.J.F. & B.B.

GENERAL DETAILS
ILLINOIS ROUTE 1
OVER NORFOLK SOUTHERN RR
STA. 757+97.66



**BERNARDIN
LOCHMUELLER &
ASSOCIATES, INC.**

3 Oak Drive
Maryville, IL 62449-5635
Local (618) 288-4665
Fax 618-288-4666

SHEET NO. 2 27 SHEETS	F.A.P. RTE. 332	SECTION 103B-1	COUNTY WABASH	TOTAL SHEETS 90	SHEET NO. 36
	SN 093-0023		CONTRACT NO. 94754		
FED. ROAD DIST. NO. 7 ILLINOIS FED. AID PROJECT 332					