

STATE OF ILLINOIS
DEPARTMENT OF TRANSPORTATION
51'-2"

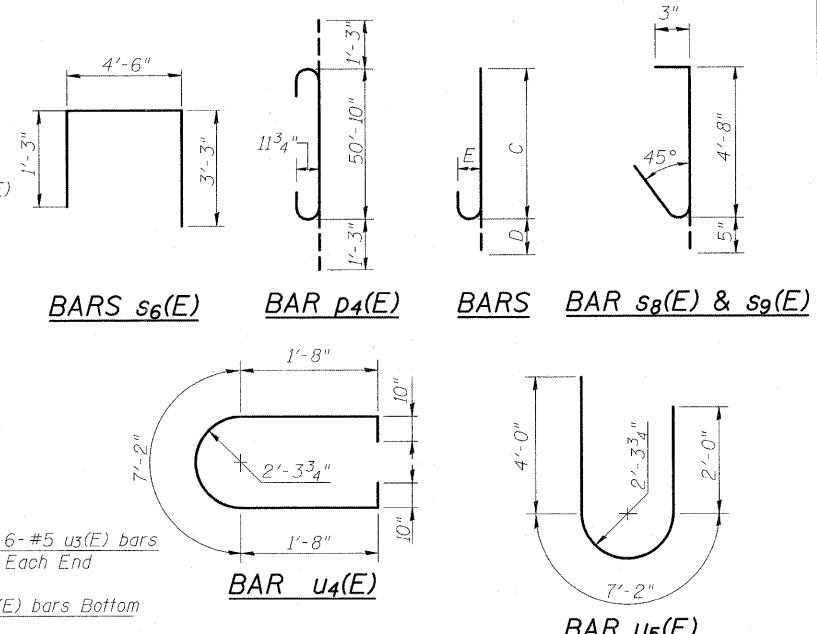
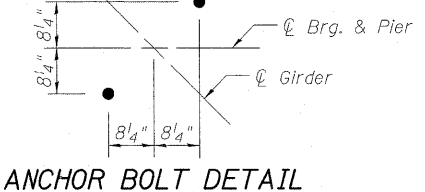
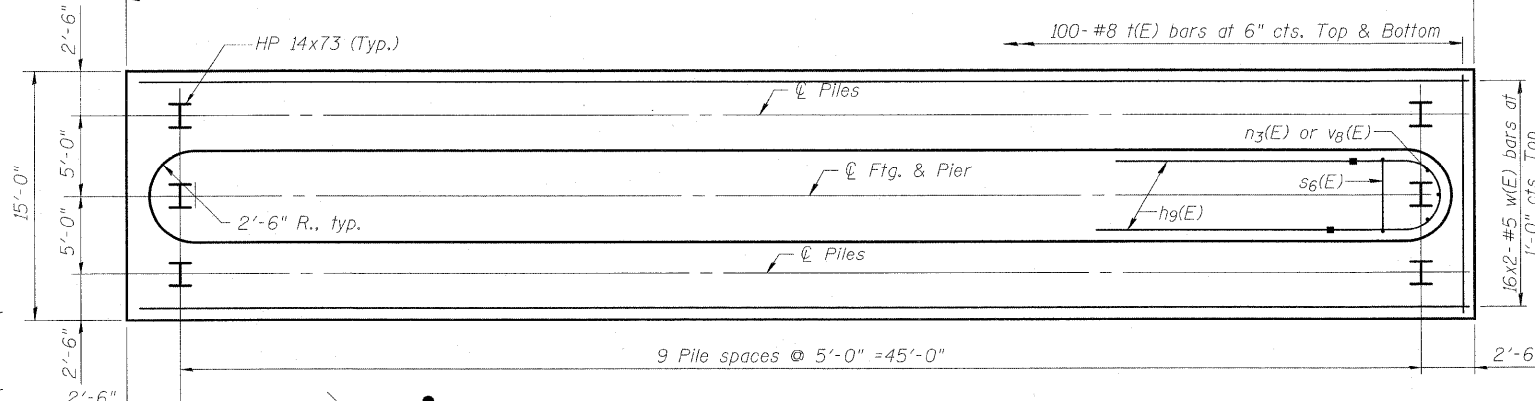
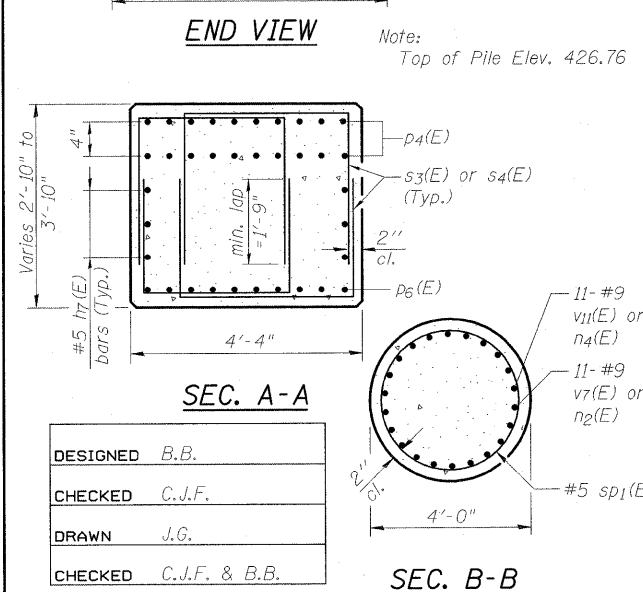
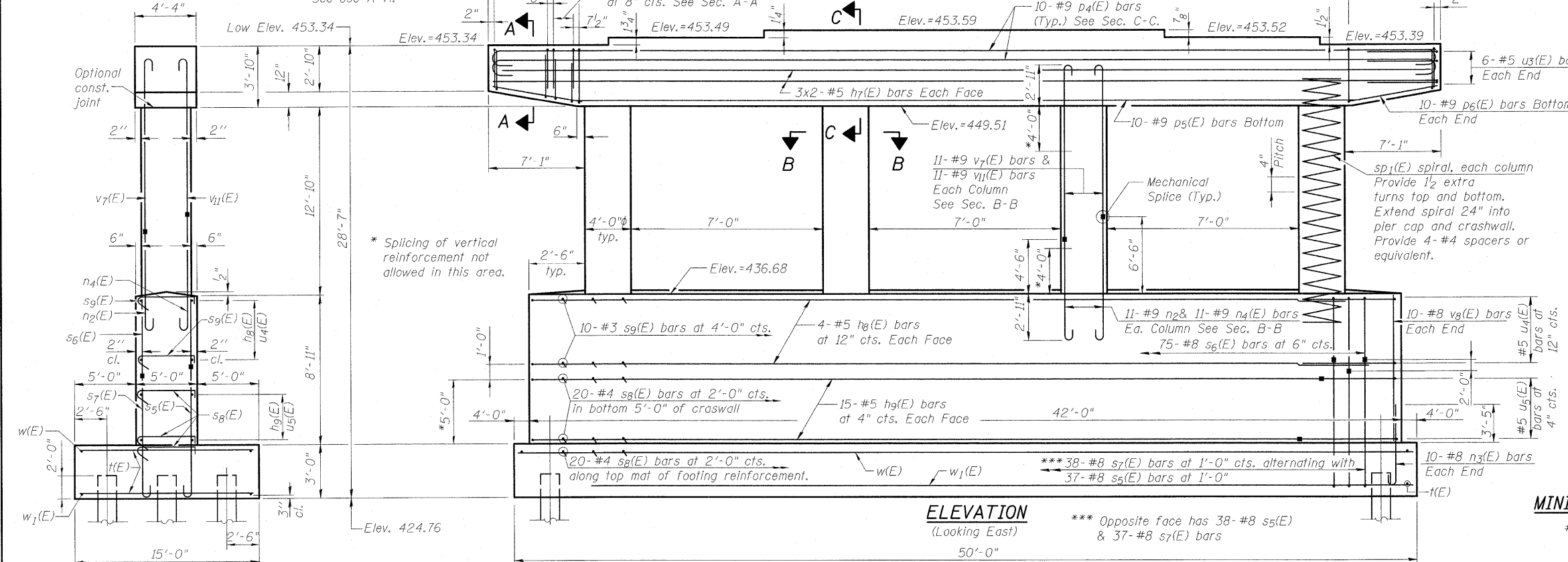
Notes:
Space reinforcement in cap to miss anchor bolts.
Pour steps monolithically with cap.
For details of piles, see sheet 24 of 27.
All Mechanical Splices shall be staggered.
Stagger Mechanical Splice locations of u₅(E) bars in crashwall by alternating the placement of the bars long leg on each face.
Cut bottom footing bars to fit between piles.
Clear cover noted to mechanical splice, where applicable.

PILE DATA

Type: HP 14x73
Nominal Required Bearing: 578k
Factored Resistance Available: 289k
Est. Length: 19'-0"
No. Production Piles: 30
No. Test Piles: None

For Sec. C-C See Sheet 19 of 27.

7 Pairs of #5 s₃(E) bars
@ 8" cts. at each end.
See sec A-A.



PIER 1 BILL OF MATERIAL

Bar	No.	Size	Length	Shape
h ₇ (E)	12	#5	26'-3"	—
h ₈ (E)	8	#5	37'-0"	—
h ₉ (E)	30	#5	31'-0"	—
n ₂ (E)	44	#9	8'-11"	—
n ₃ (E)	20	#8	7'-1"	—
n ₄ (E)	44	#9	10'-11"	—
p ₄ (E)	20	#9	53'-4"	—
p ₅ (E)	10	#9	37'-8"	—
p ₆ (E)	20	#9	6'-6"	—
s ₂ (E)	41	#5	16'-4"	—
s ₃ (E)	56	#5	8'-0"	—
s ₄ (E)	24	#5	9'-2"	—
s ₅ (E)	75	#8	9'-2"	—
s ₆ (E)	75	#8	9'-0"	—
s ₇ (E)	75	#8	11'-2"	—
s ₈ (E)	320	#4	5'-4"	—
s ₉ (E)	40	#3	5'-4"	—
sp ₁ (E)	4	#5	16'-10"	—
t(E)	200	#8	14'-6"	—
u ₃ (E)	12	#5	7'-4"	—
u ₄ (E)	8	#5	12'-2"	—
u ₅ (E)	30	#5	13'-2"	—
v ₇ (E)	44	#9	12'-9"	—
v ₈ (E)	20	#8	8'-9"	—
v ₁₁ (E)	44	#9	10'-9"	—
w(E)	32	#5	25'-8"	—
w ₁ (E)	48	#5	17'-8"	—
Structure Excavation		Cu. Yd.	238.0	
Concrete Structures		Cu. Yd.	206.5	
Reinforcement Bars, Epoxy Coated		Pound	35,460	
Furnishing Steel Piles HP 14x73		Foot	570	
Driving Piles		Foot	570	
Pile Shoes		Each	30	
Mechanical Splicers		Each	298	

**PIER 1
ILLINOIS ROUTE 1
OVER NORFOLK SOUTHERN RR
STA. 757+97.66**

MINIMUM BAR LAP
#5 bar = 1'-8"

A & B DIMENSIONS

Bar	A	B
s ₃ (E)	3'-0"	2'-6"
s ₄ (E)	3'-0"	3'-1"
u ₃ (E)	3'-2"	1'-8"

C, D & E DIMENSIONS

Bar	C	D	E
v ₇ (E)	11'-3"	1'-6"	11 ³ / ₄ "
n ₂ (E)	7'-5"	1'-6"	11 ³ / ₄ "
n ₃ (E)	6'-2"	11"	8"
n ₄ (E)	9'-5"	1'-6"	11 ³ / ₄ "
v ₁₁ (E)	9'-3"	1'-6"	11 ³ / ₄ "
s ₅ (E)	8'-3"	11"	8"
s ₇ (E)	10'-3"	11"	8"

SHEET NO. 18	F.A.P. RTE. 332	SECTION 103B-1	COUNTY WABASH	TOTAL SHEETS	SHEET NO.
				90	52
27 SHEETS	SN 093-0023		CONTRACT NO. 94754		
FED. ROAD DIST. NO. 7		ILLINOIS	FED. AID PROJECT 332		

BERNARDIN LOCHMUELLER & ASSOCIATES, INC.
3 Oak Drive
Mareville, IL 62962-5653
Local (618) 288-4665
Fax 618-288-4666

12/25/00 11/1/2000 12/25/00 09:00:23 94754.dgn