

STATE OF ILLINOIS
DEPARTMENT OF TRANSPORTATION
PLANS FOR
PROPOSED LOCAL AGENCY IMPROVEMENT
FEDERAL AID URBAN PROJECT

| ROUTE NO. | SECTION | CITY | TOTAL SHEETS | SHEET NO. |
|---------------------|----------------|----------|------------------------|-----------|
| | 05-00001-00-RP | OREANA | 46 | 1 |
| FED. ROAD DIST. NO. | | ILLINOIS | PROJECT HPP-0913 (001) | |

CONTRACT NUMBER 95537

PLAN 1" = 20'
SCALE: PROFILE HOR. 1" = 20'
PROFILE VERT. 1" = 2'
CROSS SECTIONS HOR. 1" = 5'
VERT. 1" = 2'

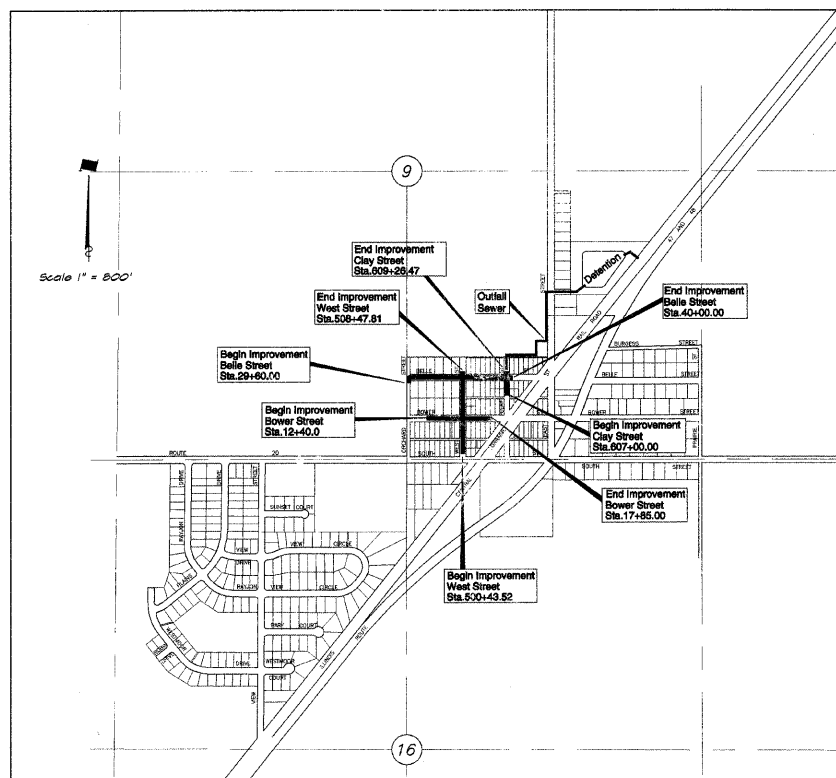
VILLAGE OF OREANA, ILLINOIS

SAFETEA-LU PROJECT

SECTION 05-00001-00-RP
PROJECT HPP-0913 (001)
C -97-033-08
MACON COUNTY, ILLINOIS

UTILITIES

| | | |
|----------------------------------------------------------|--------------------------------------|--------------|
| AMEREN IP 500 S. 27TH STREET DECATUR, IL 62521 | GAS AND ELECTRIC | 800-892-7715 |
| SBC 990 SOUTHSIDE DRIVE DECATUR, IL 62521 | TELEPHONE POLES, BOXES AND CABLES | 217-429-8596 |
| COMCAST 1275 N. WATER STREET DECATUR, IL 62521 | POLES, BOXES AND CABLES | 217-424-8474 |
| VILLAGE OF OREANA 600 N. EAST ST. OREANA, IL 62554 | STREET AND WATER DEPT. | 217-468-2112 |



LOCATION MAP
TOTAL LENGTH OF PROJECT = 2534.78 FEET = 0.480 MILES
NET LENGTH OF PROJECT = 2534.78 FEET = 0.480 MILES

DESIGN DESIGNATION

0045 (2018) LOCAL 0.077 (PC-C-20)
DESIGN SPEED = 25 MPH
ADT (2018) = 400 PC=348 S U=50 MV=2

IDOT STANDARDS

- 280001-05 Temporary Erosion Control Systems
- 420001-07 Pavement Joints
- 420101-04 24' Jointed PCC Pavement
- 424001-05 Curb Flaps for Sidewalks
- 542301-02 Precast Reinforced Concrete Flared End Section
- 602301-02 Inlet, Type A
- 602401-02 Manhole, Type A
- 602406-03 Manhole, Type A - 6' Diameter
- 602411-01 Manhole, Type A - 7' Diameter
- 602416-01 Manhole, Type A - 8' Diameter
- 602421-01 Manhole, Type A - 9' Diameter
- 602601-02 Precast Reinforced Concrete Flat Slab Top
- 604001-03 Frames and lids, Type 1
- 606001-04 Concrete Curb and Combination Concrete Curb and Gutter
- 664001-02 Chain Link Fence
- 701901-01 Traffic Control Devices
- 780001-02 Typical Pavement Markings
- BLR22-6 Typical Application of Traffic Control Devices for Construction on Rural Local Highways

BAINBRIDGE - GEE - MILANSKI & ASSOC., INC.

1670 S. TAYLORVILLE RD.
DECATUR, ILLINOIS 62521
TELE: (217) 423-8600

INDEX TO SHEETS

SEE SHEET NO. 2

NOTE

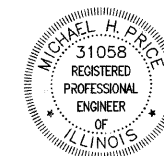
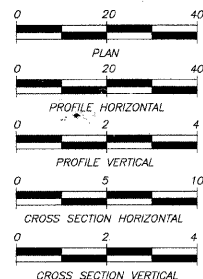
Underground facilities, structures and utilities have been plotted from available surveys and records and their locations must be considered approximate only. There may be others, the existence of which is presently not known. The depth of utilities is assumed to be normal and customary. Contractor shall verify location and depth of all utilities prior to construction.

IT'S THE LAW IN ILLINOIS

PRIOR TO COMMENCING ANY CONSTRUCTION OR EXCAVATION, THE CONTRACTOR SHALL VERIFY THE LOCATION OF ALL UTILITIES BY CALLING:

J.U.L.I.E. * 1 - 8 0 0 - 8 9 2 - 0 1 2 3

* Joint Utilities Locating Information for Excavators.



by *Michael H. Frick*
date 6/15/2009
expires NOV.30, 2009

| | |
|---------------------------------------------------|------------------------------------------------------------------------------------|
| STATE OF ILLINOIS DEPARTMENT OF TRANSPORTATION | |
| Approved | 4/21/2010 <i>Daniel M. Johnson</i> Village of Oreana, President |
| Passed | 6/7/10 <i>Maureen E. Keval</i> District 7 Engineer of Local Roads & Streets |
| Releasing for Bid Based on Limited Review | 6/7/10 <i>Rose L. Anselmi</i> Deputy Director of Highways, Region 4 Engineer |